

84 WALTON ST

ESTABLISHED 1908

84 WALTON ST
ATLANTA, GA 30303

SUITE 200
9,987 SF

Constructed in 1908, 84 Walton was the original headquarters of the Georgia Railway and Power Company, the predecessor to Georgia Power. With its rich history, the building offers tenants a unique working experience in the heart of Downtown Atlanta. Located within the Fairlie-Poplar District, it is within walking distance of Centennial Olympic Park, Mercedes-Benz Stadium, State Farm Arena, and the Georgia World Congress Center. This property is easily accessible via Five Points MARTA station and offers rare access to ample parking in adjacent decks and street-level parking.

**EXCLUSIVELY
MARKETED BY:**

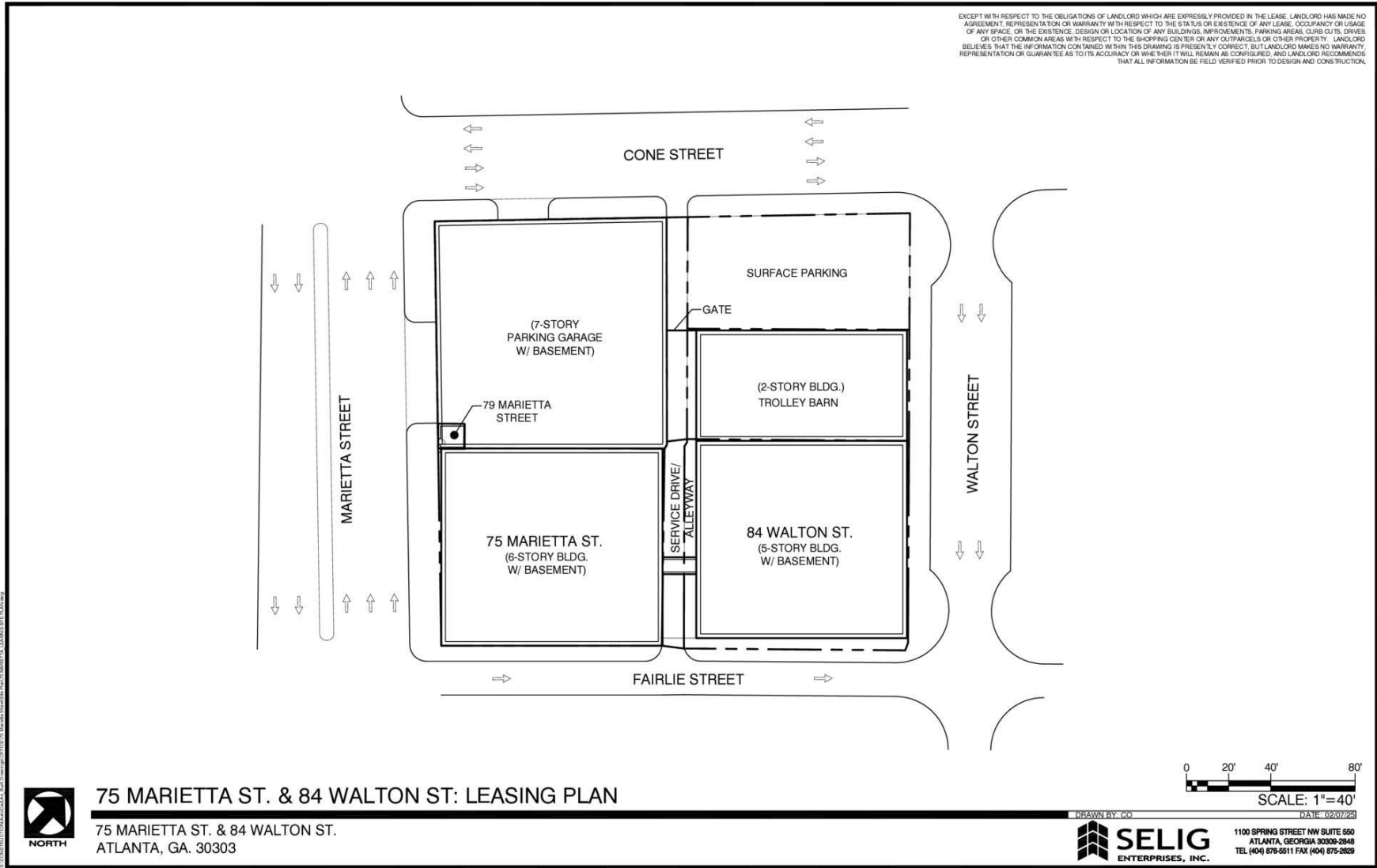


JIM SAINE

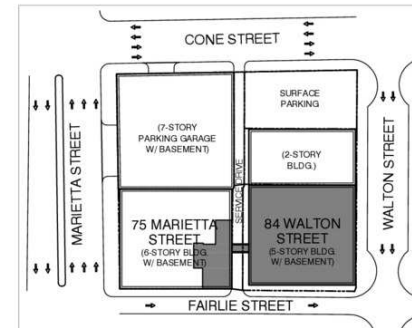
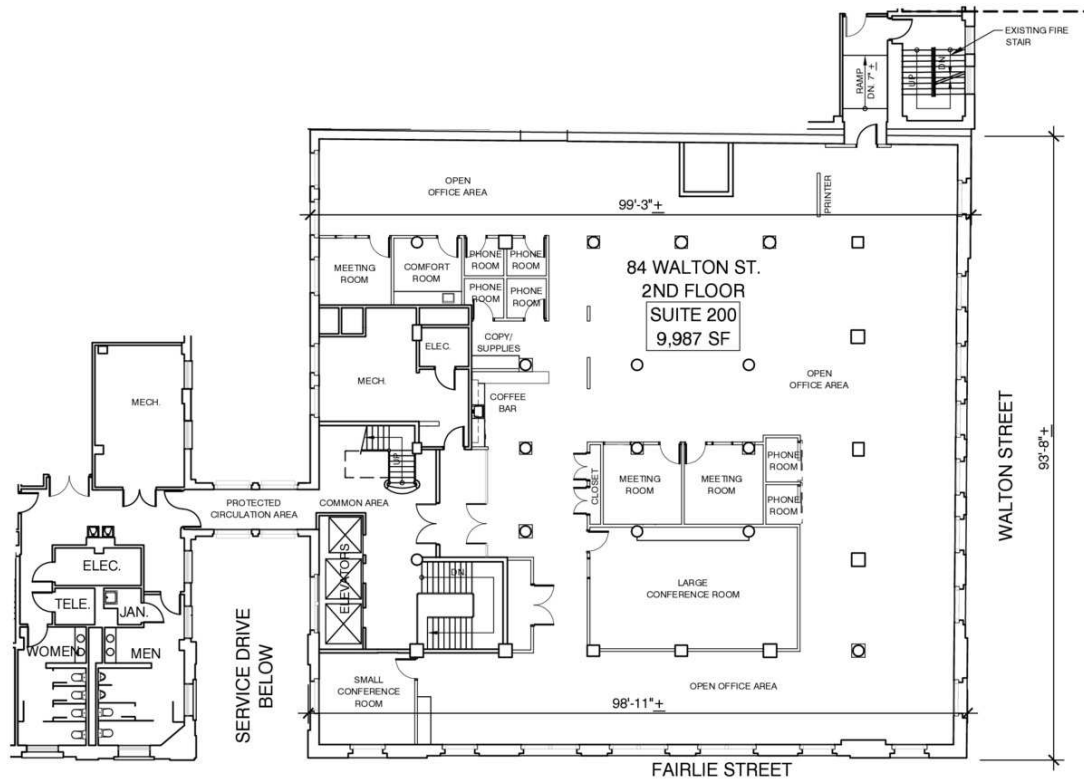
404.898.9010

jsaine@seligenterprises.com





EXCEPT WITH RESPECT TO THE OBLIGATIONS OF LANDLORD WHICH ARE EXPRESSLY PROVIDED IN THE LEASE, LANDLORD HAS MADE NO AGREEMENT, REPRESENTATION OR WARRANTY WITH RESPECT TO THE STATUS OR EXISTENCE OF ANY LEASE, OCCUPANCY OR USAGE OF ANY SPACE, OR THE EXISTENCE, DESIGN OR LOCATION OF ANY BUILDINGS, IMPROVEMENTS, PARKING AREAS, CURB CUTS, DRIVE OR DRIVE CURB CUTS ARE ALL WITH RESPECT TO THE SPECIFIC LOT OR ANY LOT ADJACENT TO THE LOT. LANDLORD BELIEVES THAT THE INFORMATION CONTAINED WITHIN THIS DRAWING IS PRESENTLY CORRECT, BUT LANDLORD MAKES NO WARRANTY, REPRESENTATION OR GUARANTEE AS TO ITS ACCURACY OR WHETHER IT WILL REMAIN AS SHOWN, AND LANDLORD RECOMMENDS THAT ALL INFORMATION BE FIELD VERIFIED PRIOR TO DESIGN AND CONSTRUCTION.



KEY PLAN SCALE: 1"=100'

NORTH



84 WALTON STREET - SECOND FLOOR PLAN - SUITE 200

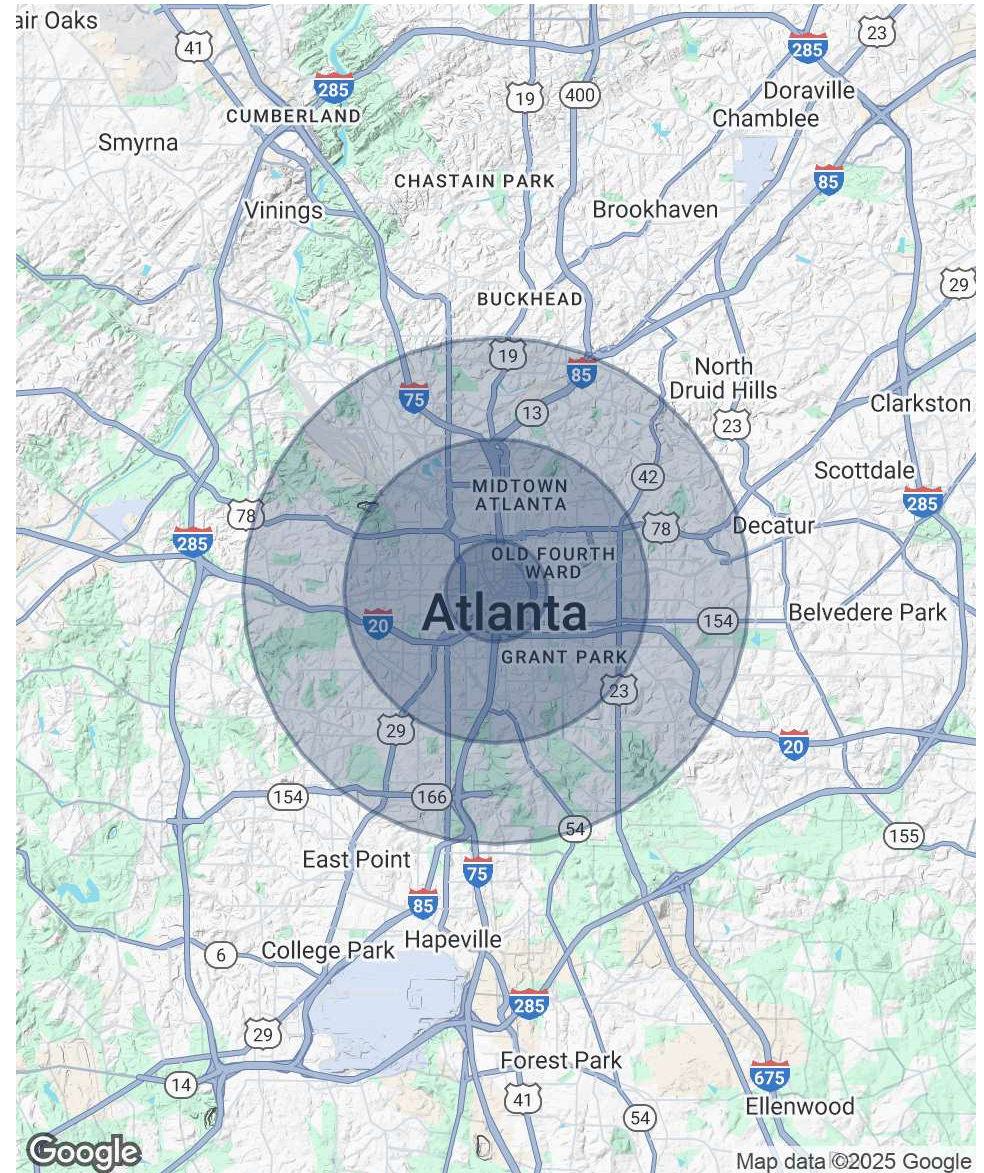
84 WALTON STREET, SUITE 200
ATLANTA, GA. 30303

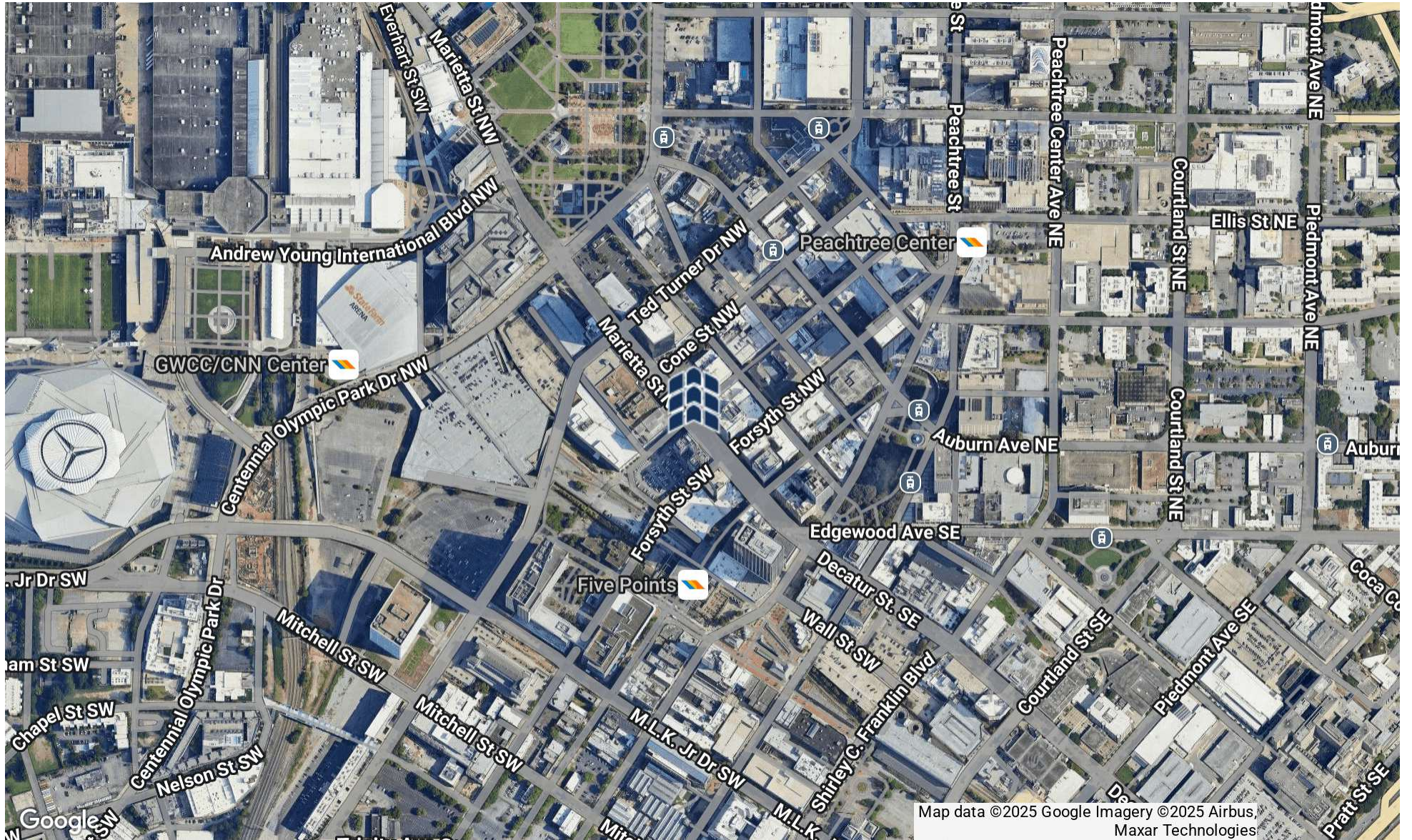
DRAWN BY: CO
SELIG ENTERPRISES, INC.
1100 SPRING STREET NW SUITE 550
ATLANTA, GEORGIA 30309-2848
TEL (404) 878-5511 FAX (404) 875-2829





POPULATION	1 MILE	3 MILES	5 MILES
Total Population	25,714	196,271	389,570
Average Age	34	36	37
Average Age (Male)	34	36	37
Average Age (Female)	34	36	37
HOUSEHOLDS & INCOME	1 MILE	3 MILES	5 MILES
Total Households	10,360	94,700	181,882
# of Persons per HH	2.5	2.1	2.1
Average HH Income	\$75,516	\$118,369	\$123,677
Average House Value	\$417,417	\$574,637	\$587,311
RACE	1 MILE	3 MILES	5 MILES
% White	27.6%	44.0%	43.1%
% Black	58.2%	40.7%	42.4%
% Asian	5.5%	6.0%	4.9%
% Hawaiian	0.1%	0.0%	0.0%
% American Indian	0.3%	0.2%	0.3%
% Other	2.7%	2.1%	2.5%





Map data ©2025 Google Imagery ©2025 Airbus, Maxar Technologies