

LAND FOR SALE



S 90th E Ave

E 62nd St

S 90th E Ave

E 62nd Cir S

S 8

2

1



4

3



3



3

2

1

5

6

7

8

11

12

2

1

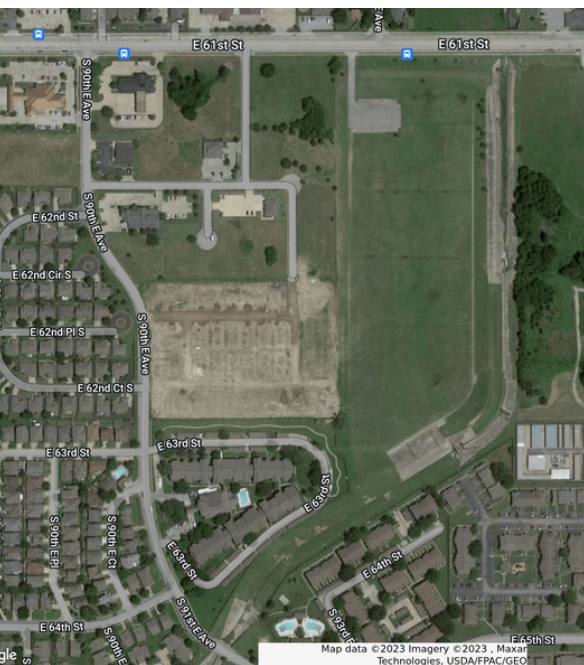
Woodland Valley Office Park



Packaged sale: \$1,622,057



13 Lots



SITE DESCRIPTION

1 of 13 lots available either individually or as a package of Woodland Valley Office Park on 61st Street between Memorial and Mingo just behind ONB Bank and Tinker Federal Credit Union. Anchored by Children's Dental Health Center, Oklahoma Arthritis Center, HealthWise Chiropractic, and Wagner Cosmetic Dentistry, this office park is an ideal location to build for any light office use.

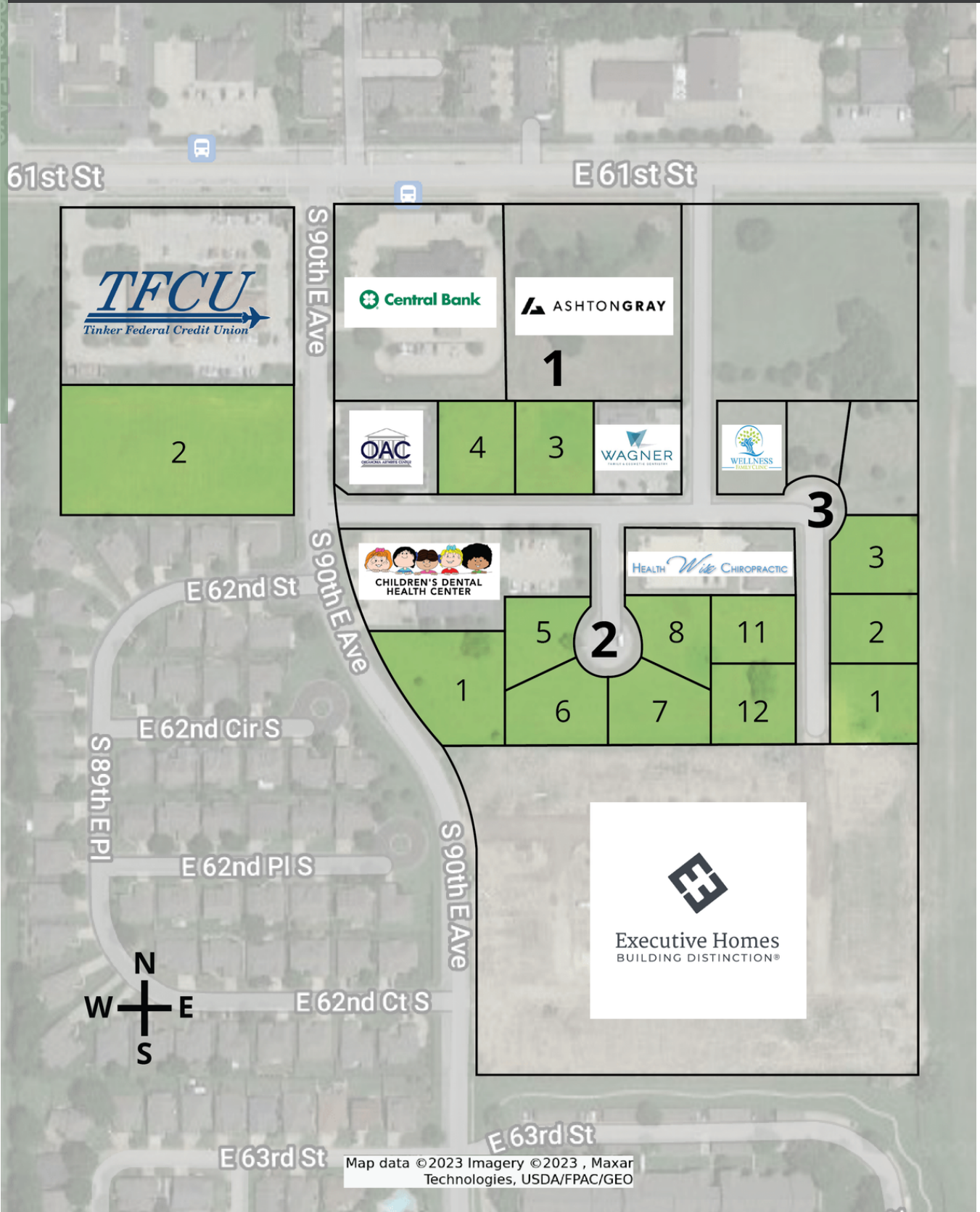
FOR MORE INFORMATION CONTACT:

DREW DOSSEY
SALES ASSOCIATE
918.740.7707
DDOSSEY@MCGRAWOK.COM

ANDREW LEACH
SALES ASSOCIATE
918.388.6148 | 918.388.6148
ALEACH@MCGRAWCP.COM



WOODLAND VALLEY OFFICE PARK



FOR MORE
INFORMATION
CONTACT:

DREW DOSSEY
SALES ASSOCIATE
918.740.7707
DDOSSEY@MCGRAWOK.COM

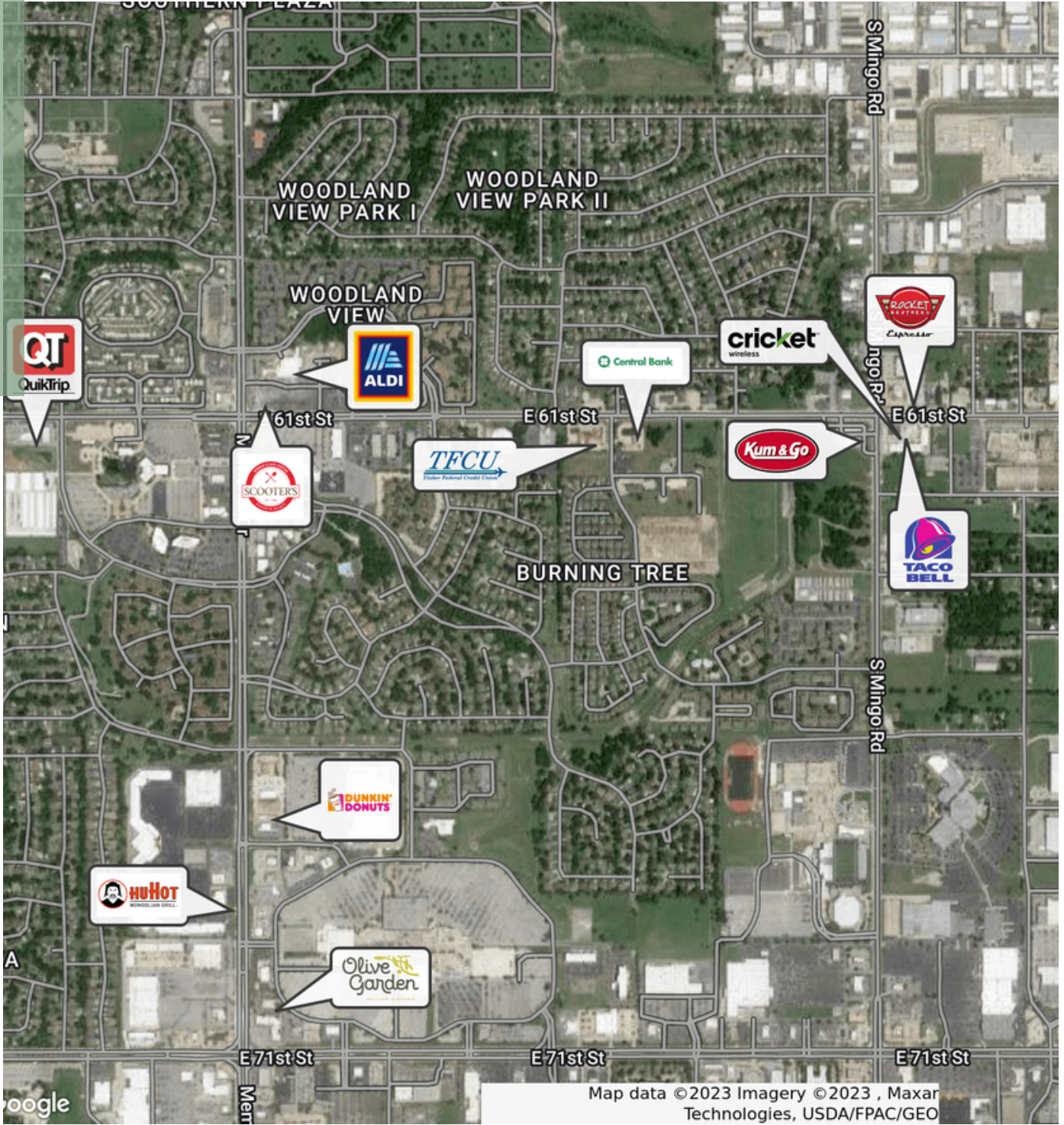
ANDREW LEACH
SALES ASSOCIATE
918.388.6148 | 918.388.6148
ALEACH@MCGRAWCP.COM

WOODLAND VALLEY OFFICE PARK

BLOCK	LOT	SIZE	PRICE
1	3	15,525 Sq. Ft. 0.3564 Acres	\$97,031
	4	15,525 Sq. Ft. 0.3564 Acres	\$97,031
2	1	26,242 Sq. Ft. 0.6024 Acres	\$164,013
	5	12,509 Sq. Ft. 0.2872 Acres	\$78,181
	6	15,834 Sq. Ft. 0.3635 Acres	\$98,963
	7	15,804 Sq. Ft. 0.3628 Acres	\$98,775
	8	12,509 Sq. Ft. 0.2872 Acres	\$78,181
	11	12,500 Sq. Ft. 0.2870 Acres	\$78,125
	12	14,833 Sq. Ft. 0.3405 Acres	\$92,706
3	1	15,369 Sq. Ft. 0.3528 Acres	\$96,056
	2	12,987 Sq. Ft. 0.2981 Acres	\$81,169
	3	14,404 Sq. Ft. 0.3307 Acres	\$90,025
C-1	OL	65,076 Sq. Ft 1.49 ACres	\$471,801

PACKAGED SALE: \$1,622,057

WOODLAND VALLEY OFFICE PARK

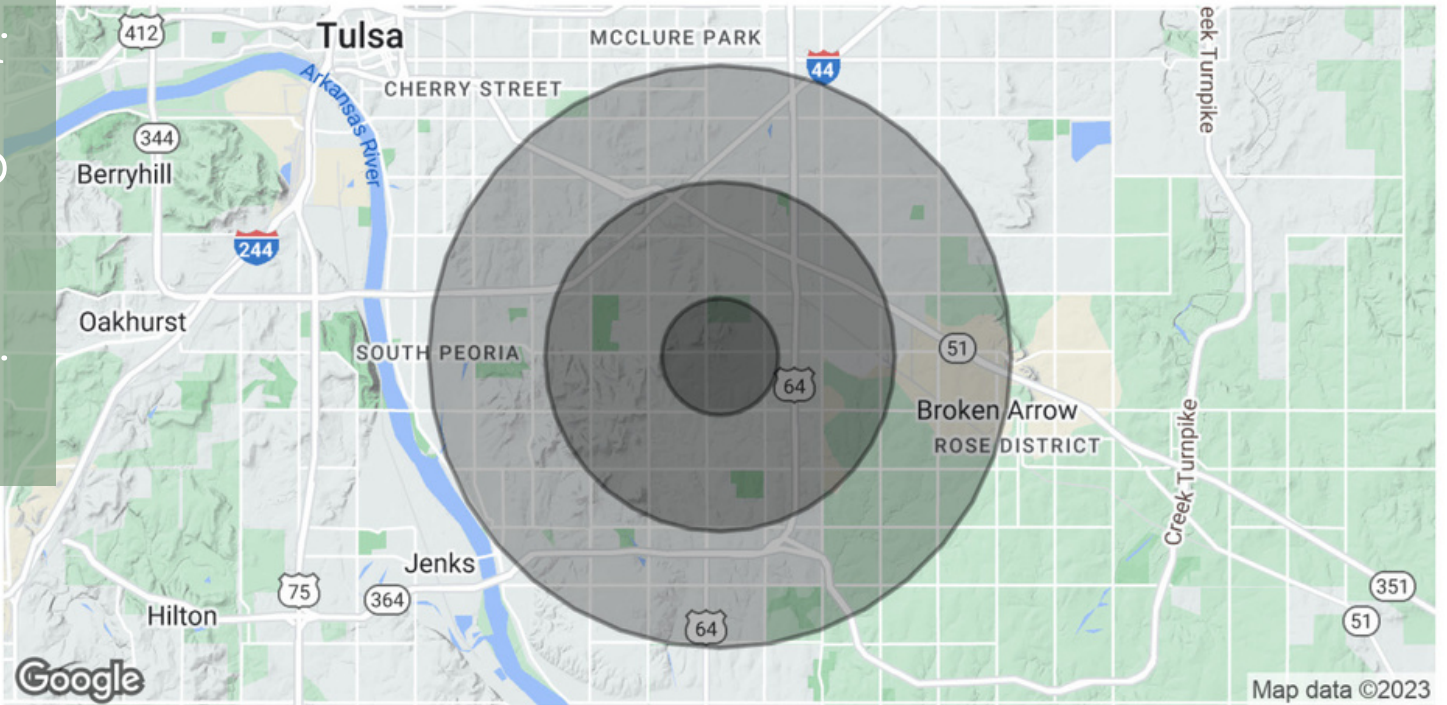


FOR MORE
INFORMATION
CONTACT:

DREW DOSSEY
SALES ASSOCIATE
918.740.7707
DDOSSEY@MCGRAWOK.COM

ANDREW LEACH
SALES ASSOCIATE
918.388.6148 | 918.388.6148
ALEACH@MCGRAWCP.COM

WOODLAND VALLEY OFFICE PARK



POPULATION	1 MILE	3 MILES	5 MILES
Total Population	12,138	86,407	247,472
Average Age	39.7	38.9	37.9
Average Age (Male)	33.5	36.4	36.4
Average Age (Female)	43.6	41.1	39.3
HOUSEHOLDS & INCOME	1 MILE	3 MILES	5 MILES
Total Households	6,333	40,824	110,500
# of Persons per HH	1.9	2.1	2.2
Average HH Income	\$61,180	\$75,166	\$80,873
Average House Value	\$158,923	\$157,620	\$175,594

* Demographic data derived from 2020 ACS - US Census

**FOR MORE
INFORMATION
CONTACT:**

DREW DOSSEY
SALES ASSOCIATE
918.740.7707
DDOSSEY@MCGRAWOK.COM

ANDREW LEACH
SALES ASSOCIATE
918.388.6148 | 918.388.6148
ALEACH@MCGRAWCP.COM