

Fullerton Lofts Retail Space

1511 W Fullerton Pkwy
Chicago, IL 60614



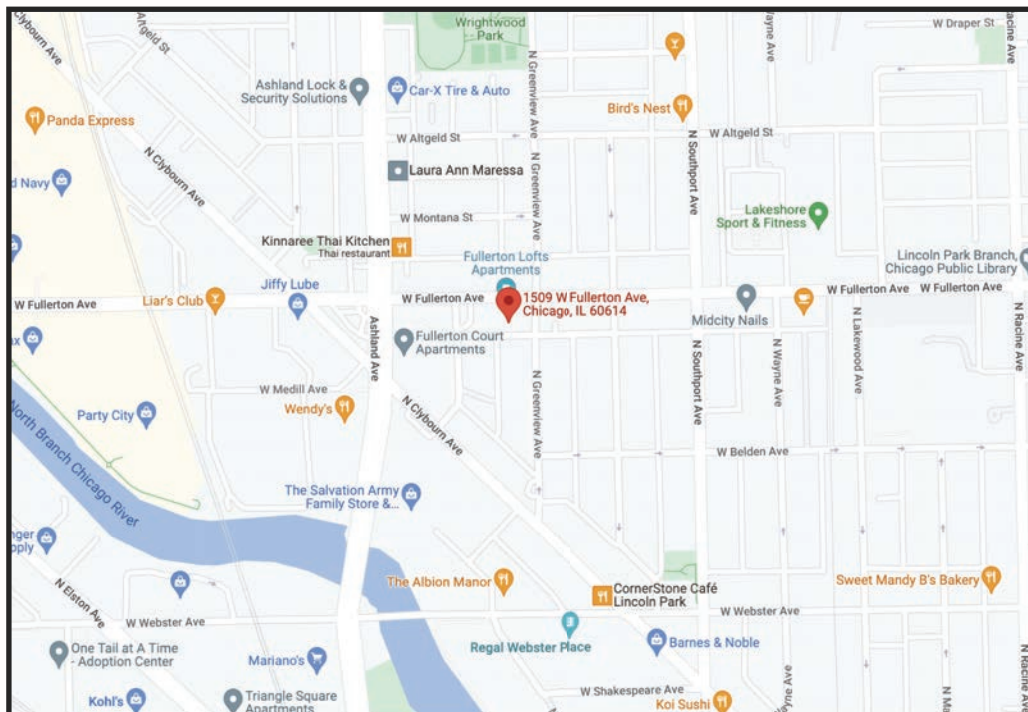
retail@groupfox.com | (312) 465-6400

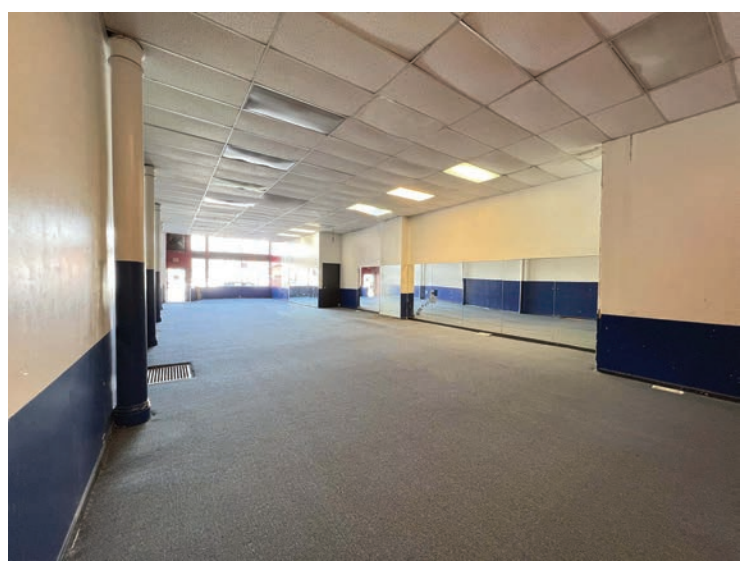
About the Location

- Bright, West Lincoln Park retail space with an open floorplan
- Located on busy Fullerton Avenue between Southport Avenue and Ashland Avenue in the historic Fullerton Lofts building
- Ideal space for a fitness user or destination retailer

Submarket

This section of Fullerton Avenue receives 24,400 passing vehicles daily on average. It is located 0.4 miles from DePaul University, 0.8 miles from I-90, one mile from Clybourne Corridor.





Building Features

- 1,895 sq ft
- \$25 per sq ft
- NNN service type
- Tenant controlled HVAC

Floor Plan



retail@groupfox.com

(312) 465-6400

**Floor plan is approximate.*