

NOW PRE-LEASING



FOR LEASE

GATEWAY SOUTH INDUSTRIAL

6810 Greenland Ridge Lane N. | Jacksonville, FL 32256

GATEWAY SOUTH INDUSTRIAL is a forthcoming Class A industrial development located in south Duval County at the convergence of Interstate 95, Interstate 295 and U.S. Highway 1. Designed to meet modern logistics and light industrial demands, the project will deliver approximately 112,010 square feet across three highly efficient buildings with flexible demising, modern clear heights and best-in-class loading configurations. Gateway South Industrial offers tenants a rare opportunity to secure new construction space in one of Jacksonville's most supply-constrained industrial corridors.

Eric Bumgarner, CCIM
Executive Vice President
+1 904 861 1152
eric.bumgarner@colliers.com

Michael Cassidy
Associate Vice President
+1 904 861 1120
michael.cassidy@colliers.com

Gordon Olson
Senior Associate
+1 904 861 1124
gordon.olson@colliers.com

76 S Laura Street
Suite 1500
Jacksonville, FL 32202
P: +1 904 358 1206
colliers.com/jacksonville

GATEWAY SOUTH INDUSTRIAL

is a planned **three-building Class A industrial park** designed to serve a wide range of industrial, distribution and service users. The development will feature concrete tilt-wall construction, efficient shallow-bay layouts and a mix of grade-level and dock-high loading to support flexible tenant operations.

The site is planned with centralized loading, generous truck court depth and ample on-site parking, addressing the functional limitations commonly found in older industrial inventory throughout the Butler Corridor. Buildings will offer 20' to 28' clear heights, modern column spacing and demising flexibility to accommodate tenants ranging from local operators to regional distribution users.

Upon delivery, Gateway South Industrial will represent one of the few opportunities to lease new construction industrial space in a highly infill location where land constraints and entitlement barriers continue to limit new supply.



BREAKING GROUND
Q2 2026

EST. DELIVERING Q1 2027

BUILDING 3

56,810± SF

Dock High Doors: 8 (9' X 10')

Drive-in Doors: 2 (12' x 14')

BUILDING 1

27,600± SF

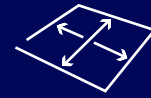
Drive-in Doors: 4 (9' X 10')

BUILDING 2

27,600± SF

Drive-in Doors: 4 (9' X 10')

PROPERTY Overview



9.3± Total AC



112,010 Total ± SF



Light Industrial (IL)



Building 1 & 2 Conceptual Design

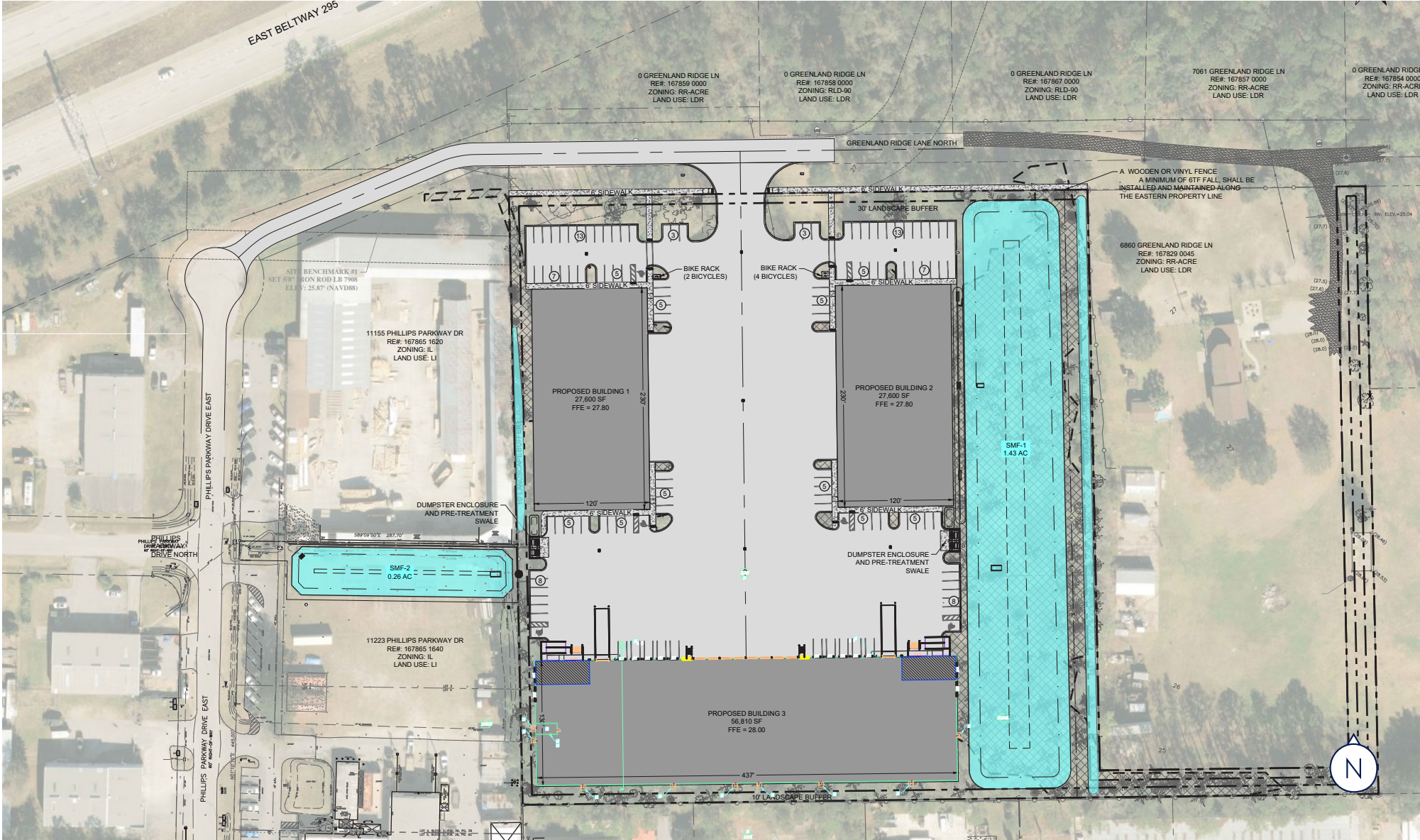


Building 3 Conceptual Design

Total Building SF
Minimum Divisible Office
Building Dimensions
Column Spacing
Clear Height
Configuration
Dock High Doors
Drive In Doors
Dock Package
Sprinkler
Electric Service
Lighting
Roof Material
Insulation
Windows
Warehouse Air Exchange Slab

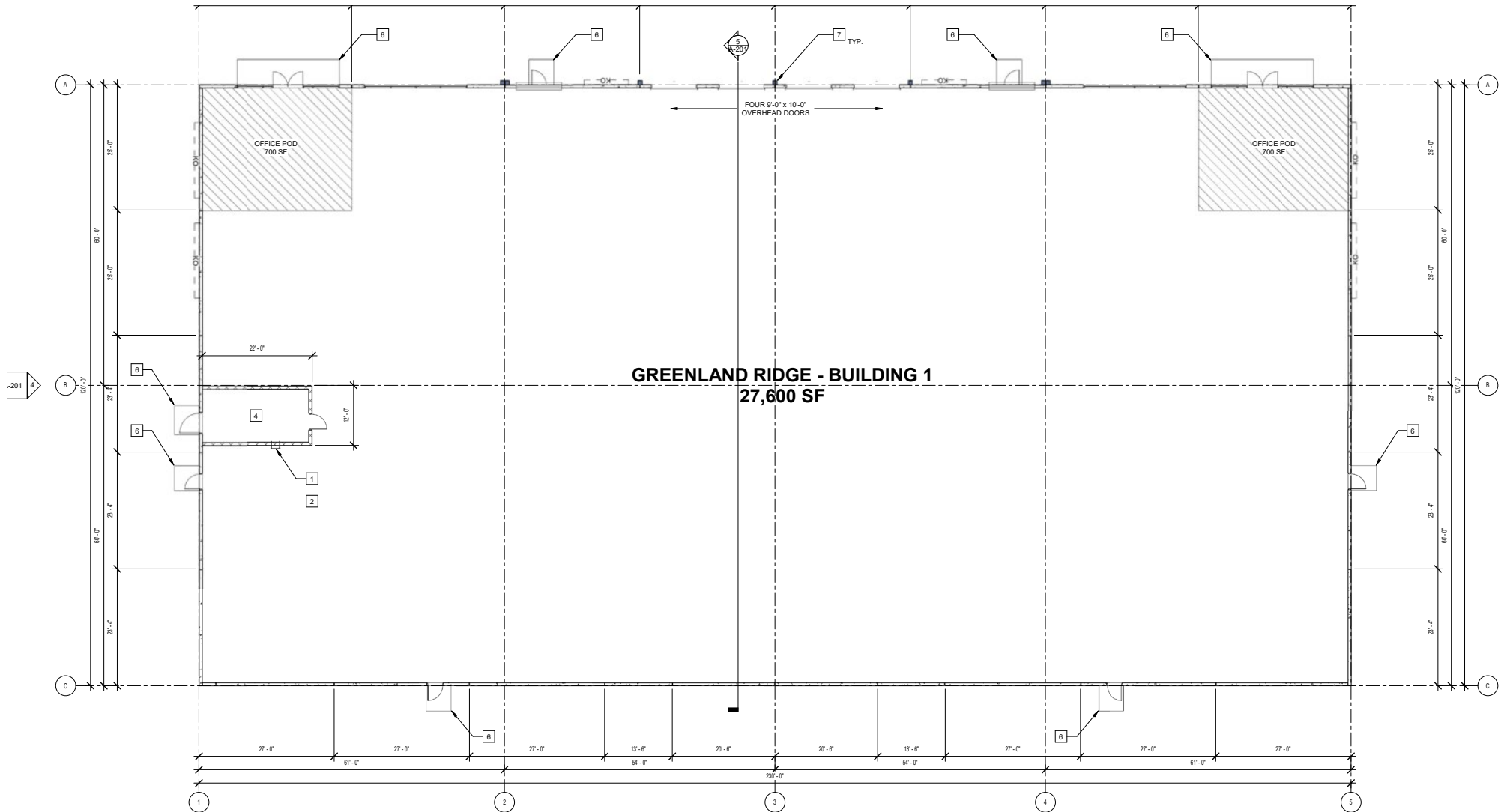
Building 1	Building 2	Building 3
27,600± SF	27,600± SF	56,810± SF
13,800± SF	13,800± SF	28,405± SF
700± SF per 13,800± SF	700± SF per 13,800± SF	1,300± SF per 28,405± SF
120' x 230'	120' x 230'	130' x 437'
54' x 60'	54' x 60'	54' x 65'
20' clear	20' clear	28' clear
Front load	Front load	Front load
N/A	N/A	(8) 9' x 10' (w/ 10 additional knockouts)
4 (9' x 10')	4 (9' x 10')	2 (12' x 14') drive-in ramps
N/A	N/A	Hydraulic levelers, 6' x 8', 40,000 lb; dock seals
Wet	Wet	ESFR
400A, 277/480v, 3p, 4wire	400A, 277/480v, 3p, 4wire	800A, 277/480v, 3p, 4wire
LED	LED	LED
60 mil TPO	60 mil TPO	60 mil TPO
R-20	R-20	R-20
Clerestory - 8 (8' x 2')	Clerestory - 8 (8' x 2')	Clerestory - 10 (8' x 2')
Exhaust fans & louvers, & electric heaters	Exhaust fans & louvers, & electric heaters	Exhaust fans & louvers, & electric heaters
6", 4000 PSI, reinforced	6", 4000 PSI, reinforced	6", 4000 PSI, reinforced

PROPERTY Site Plan



PROPERTY Floor Plan

Building 1

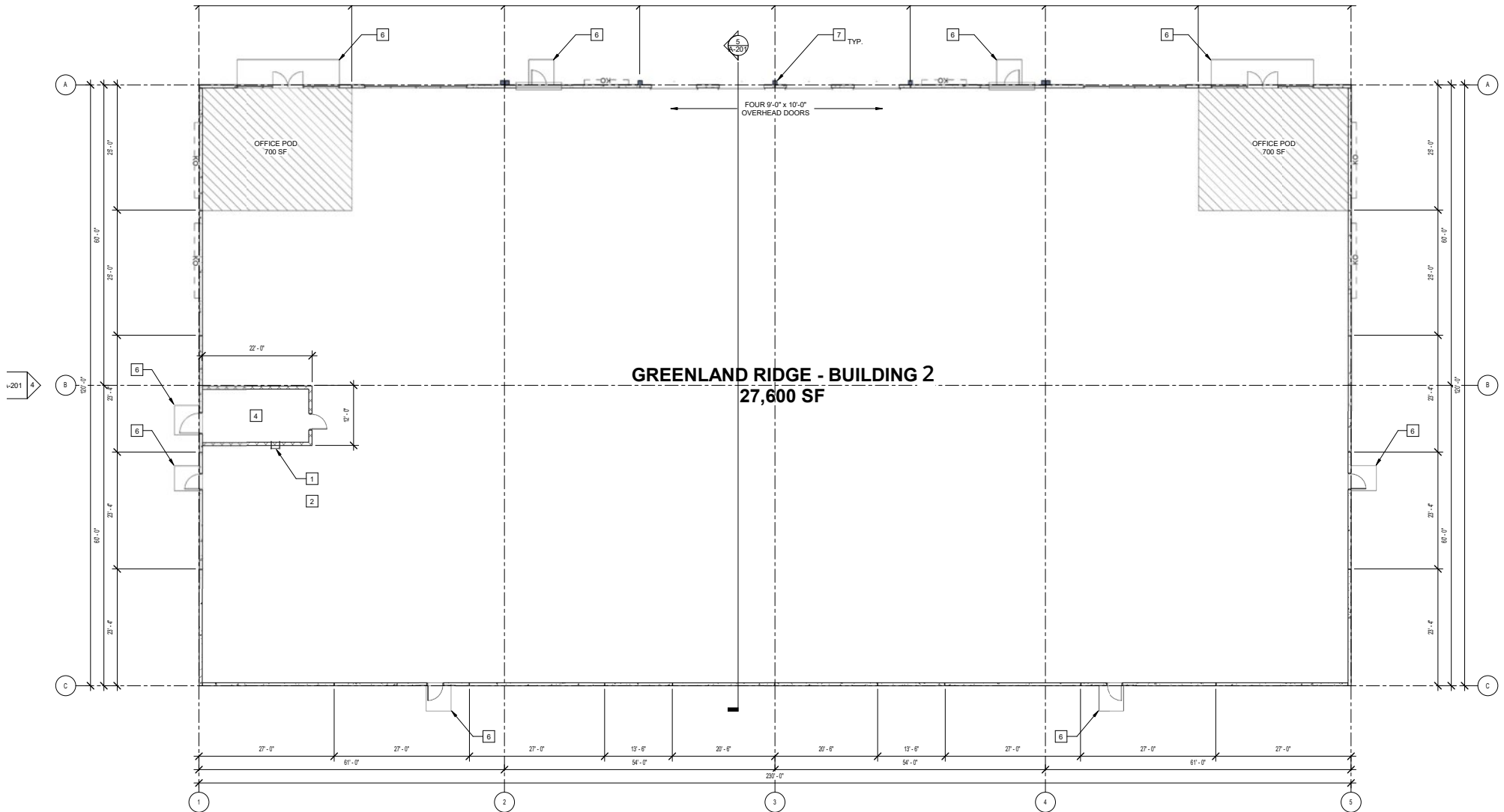


1 OVERALL FLOOR PLAN
SCALE: 3/32" = 1'-0"

1
A-201

PROPERTY Floor Plan

Building 2

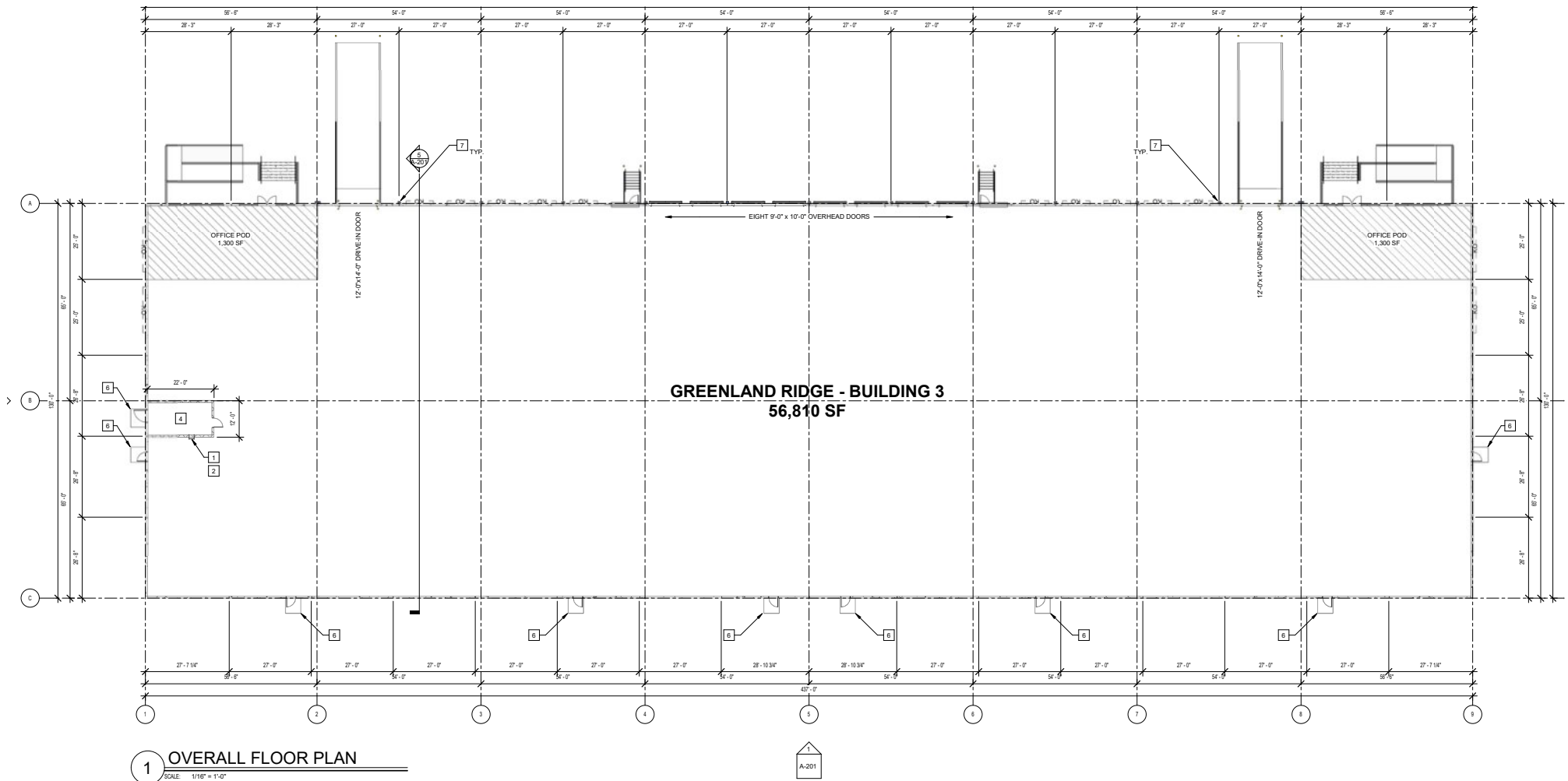


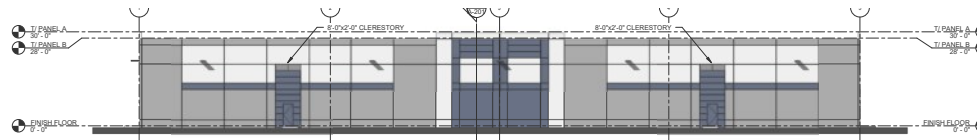
1 OVERALL FLOOR PLAN
SCALE: 3/32" = 1'-0"

1
A-201

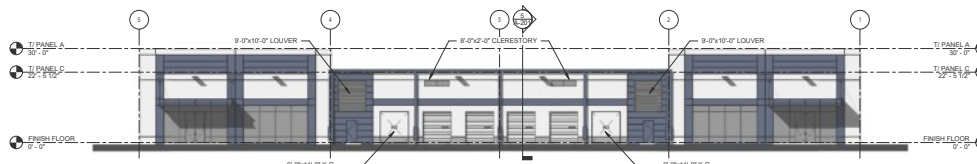
PROPERTY Floor Plan

Building 3

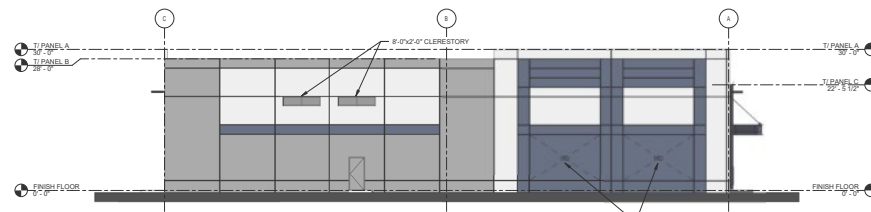




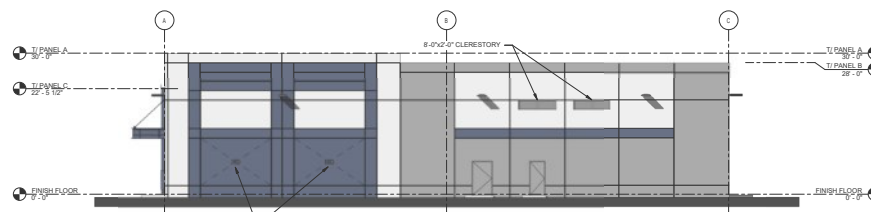
1 OVERALL SOUTH ELEVATION
SCALE: 1/8" = 1'-0"



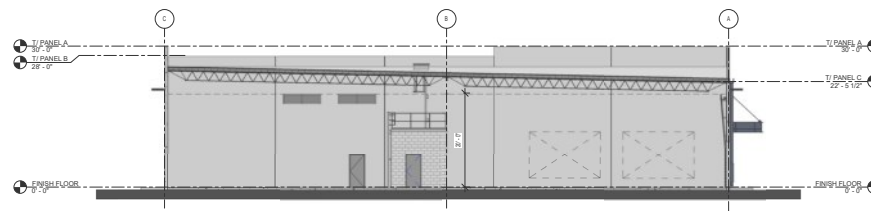
2 OVERALL NORTH ELEVATION
SCALE: 1/8" = 1'-0"



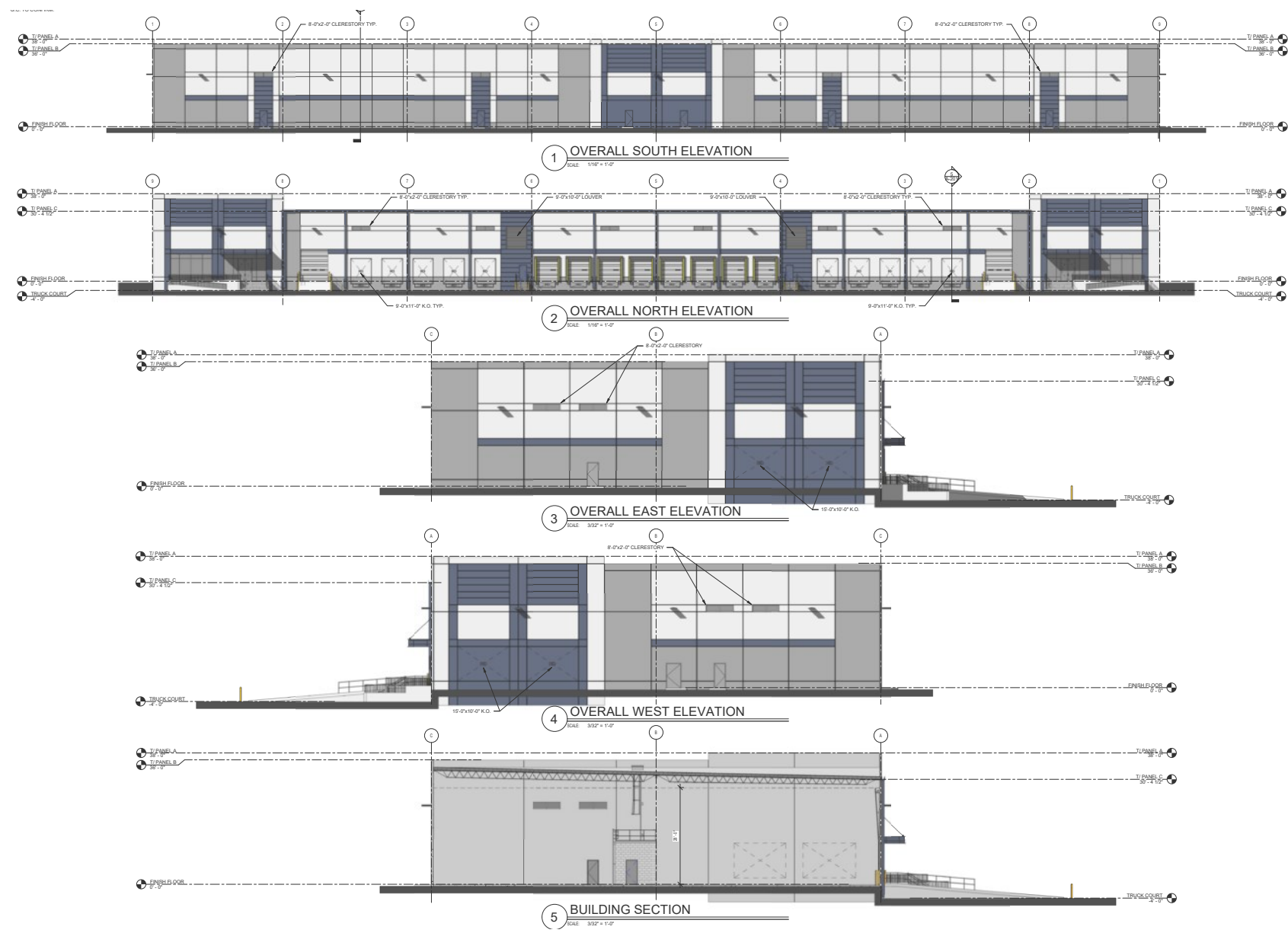
3 OVERALL EAST ELEVATION
SCALE: 3/32" = 1'-0"



4 OVERALL WEST ELEVATION
SCALE: 3/32" = 1'-0"



5 BUILDING SECTION
SCALE: 3/32" = 1'-0"



PROPERTY Location

Gateway South Industrial is strategically located in south Duval County, immediately adjacent to the region's most heavily trafficked industrial transportation network. The project sits near the intersection of Interstate 95, Interstate 295 and U.S. Highway 1, providing direct connectivity to Jacksonville's core industrial districts, the ports of Jacksonville and major population centers across Northeast Florida.

This location allows for efficient north-south and east-west distribution, quick access to regional labor pools and streamlined last-mile delivery throughout Duval, Clay and St. Johns counties. Positioned within an established industrial corridor with limited remaining developable land, Gateway South Industrial offers tenants' long-term locational advantages that are increasingly difficult to replicate in today's market



PROPERTY Distances

US-1 | 0.9 miles

I-95 | 1.5 miles

I-295 | 2.3 miles

I-10 | 17.2 miles

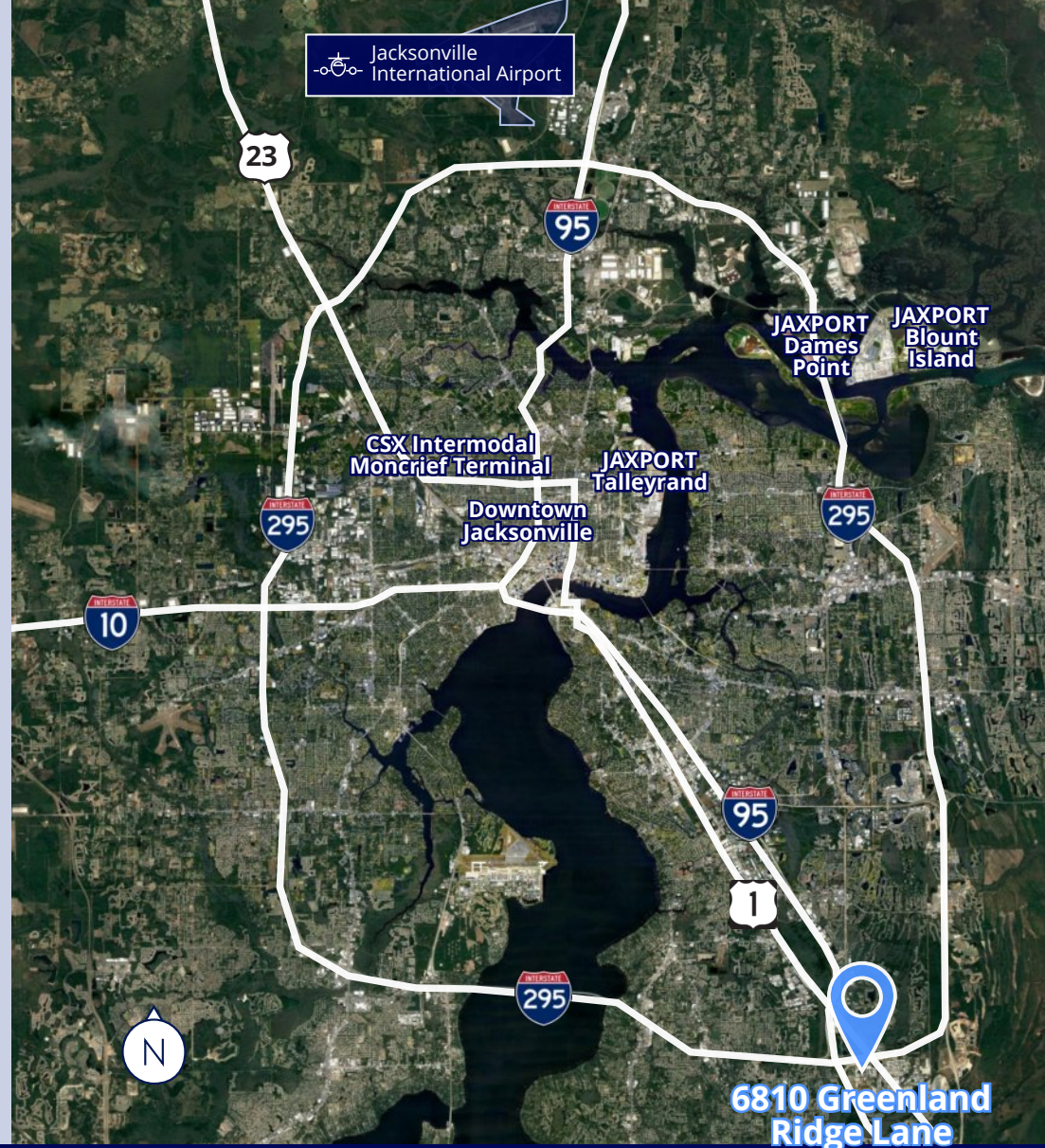
JAXPORT Talleyrand Terminal | 17.7 miles

CSX Moncrief Terminal | 19.8 miles

JAXPORT Dames Point Terminal | 22.1 miles

JAXPORT Blount Island Terminal | 21.6 miles

Jacksonville Int'l Airport | 31 miles



Eric Bumgarner, CCIM
Executive Vice President
+1 904 861 1152
eric.bumgarner@colliers.com

Michael Cassidy
Associate Vice President
+1 904 861 1120
michael.cassidy@colliers.com

Gordon Olson
Senior Associate
+1 904 861 1124
gordon.olson@colliers.com



This document/email has been prepared by Colliers for advertising and general information only. Colliers makes no guarantees, representations or warranties of any kind, expressed or implied, regarding the information including, but not limited to, warranties of content, accuracy and reliability. Any interested party should undertake their own inquiries as to the accuracy of the information. Colliers excludes unequivocally all inferred or implied terms, conditions and warranties arising out of this document and excludes all liability for loss and damages arising there from. This publication is the copyrighted property of Colliers and /or its licensor(s). © 2025. All rights reserved. This communication is not intended to cause or induce breach of an existing listing agreement. Colliers International Florida, LLC

Colliers
76 S. Laura Street, Suite 1500
Jacksonville, FL 32202
www.colliers.com/jacksonville