



PARK TECHNOLOGY CENTER

960 W 124TH AVENUE
WESTMINSTER, CO 80234
SUITE 950 – BUILDING D



±3,612 SF AVAILABLE FOR LEASE

BUILDING SPECIFICATIONS



Available SF **±3,612 SF**



Office **±1,362 SF**



Clear Height **18'**



Loading **1 drive-in**



Electrical **400A; 480V**
(to be confirmed by an electrician)



Sprinkler System **Yes**



Year Built **2001**



Zoning **MU-PUD**



NNN Expenses **\$6.76/SF**



Lease Rate **\$13.80/SF NNN**

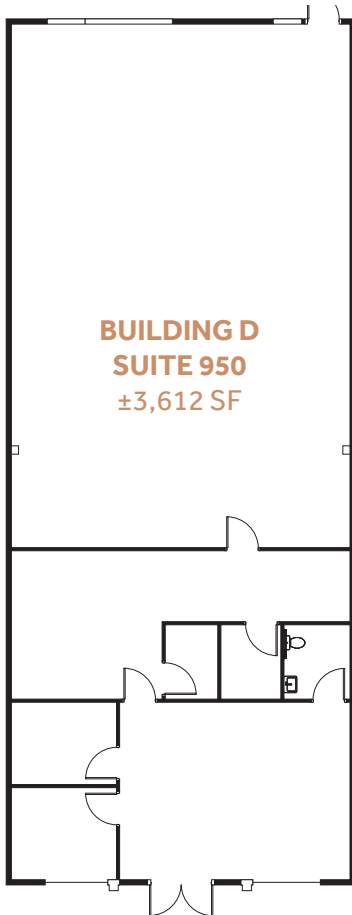
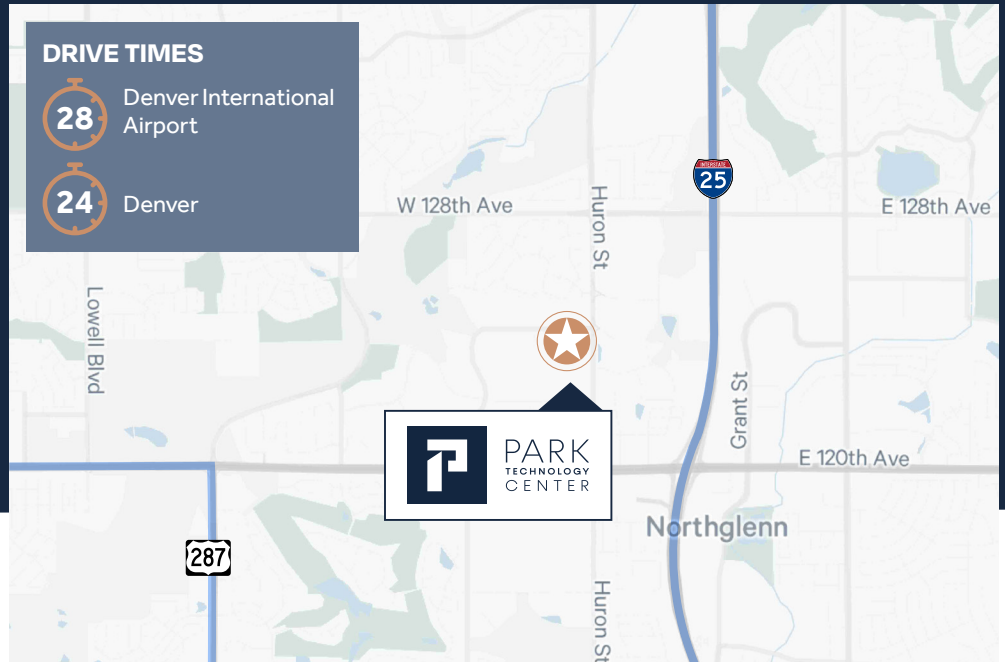


CBRE
bendetti

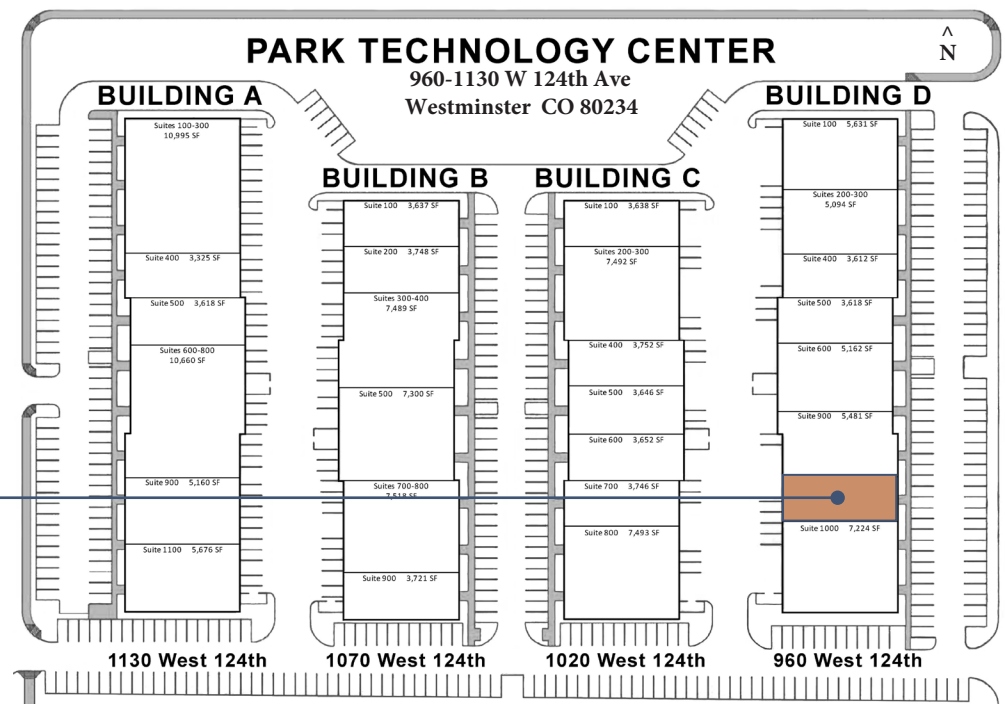


PARK
TECHNOLOGY
CENTER

**±3,612 SF AVAILABLE
FOR LEASE**



**BUILDING D
SUITE 950
±3,612 SF**



DANIEL CLOSE, SIOR
+1 303 946 3285
daniel.close@cbre.com

MATTHEW KAWULOK
+1 303 819 0497
matt.kawulok@cbre.com



© 2024 CBRE, Inc. All rights reserved. This information has been obtained from sources believed reliable, but has not been verified for accuracy or completeness. You should conduct a careful, independent investigation of the property and verify all information. Any reliance on this information is solely at your own risk. CBRE and the CBRE logo are service marks of CBRE, Inc. All other marks displayed on this document are the property of their respective owners, and the use of such logos does not imply any affiliation with or endorsement of CBRE. Photos herein are the property of their respective owners. Use of these images without the express written consent of the owner is prohibited.