

**FOR LEASE**  
INDUSTRIAL PROPERTY



## 20 GATE ST

CARVER, MA 02330

*For More Information*

**KERRICK PIERCE**

781.919.0800 X710

[kpierce@ellisrealtyadvisors.com](mailto:kpierce@ellisrealtyadvisors.com)

**DAVE ELLIS, SIOR**

781.919.0800 X701

[dave@ellisrealtyadvisors.com](mailto:dave@ellisrealtyadvisors.com)



# 20 GATE ST



## PROPERTY DESCRIPTION

Situated minutes from Route 44 & close to Routes 495/3, this industrial property caters to wide variety of industrial needs. Complete with High bay warehouse space, floor drains, additional outdoor storage, and ample parking.

## PROPERTY HIGHLIGHTS

- Close to Routes 44, 495 & 3
- High Bay Warehouse
- Ample Parking
- Additional Outdoor Storage Available
- Floor Drains & Bathroom in Unit
- Flexible Terms

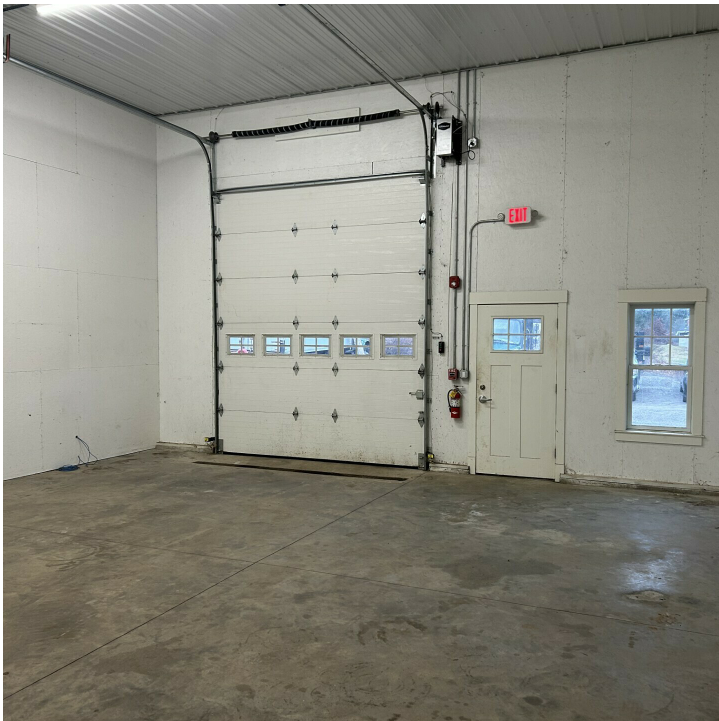
## OFFERING SUMMARY

|                |                                     |
|----------------|-------------------------------------|
| Lease Rate:    | \$1,600.00 per month (Full Service) |
| Available SF:  | 1,013 SF                            |
| Lot Size:      | 301,653 SF                          |
| Building Size: | 7,400 SF                            |

| DEMOGRAPHICS      | 0.3 MILES | 0.5 MILES | 1 MILE    |
|-------------------|-----------|-----------|-----------|
| Total Households  | 70        | 178       | 433       |
| Total Population  | 183       | 474       | 1,201     |
| Average HH Income | \$115,600 | \$115,743 | \$115,188 |

ADDITIONAL PHOTOS

# 20 GATE ST



**KERRICK PIERCE**  
781.919.0800 x710  
kperce@ellisrealtyadvisors.com

**DAVE ELLIS, SIOR**  
781.919.0800 x701  
dave@ellisrealtyadvisors.com

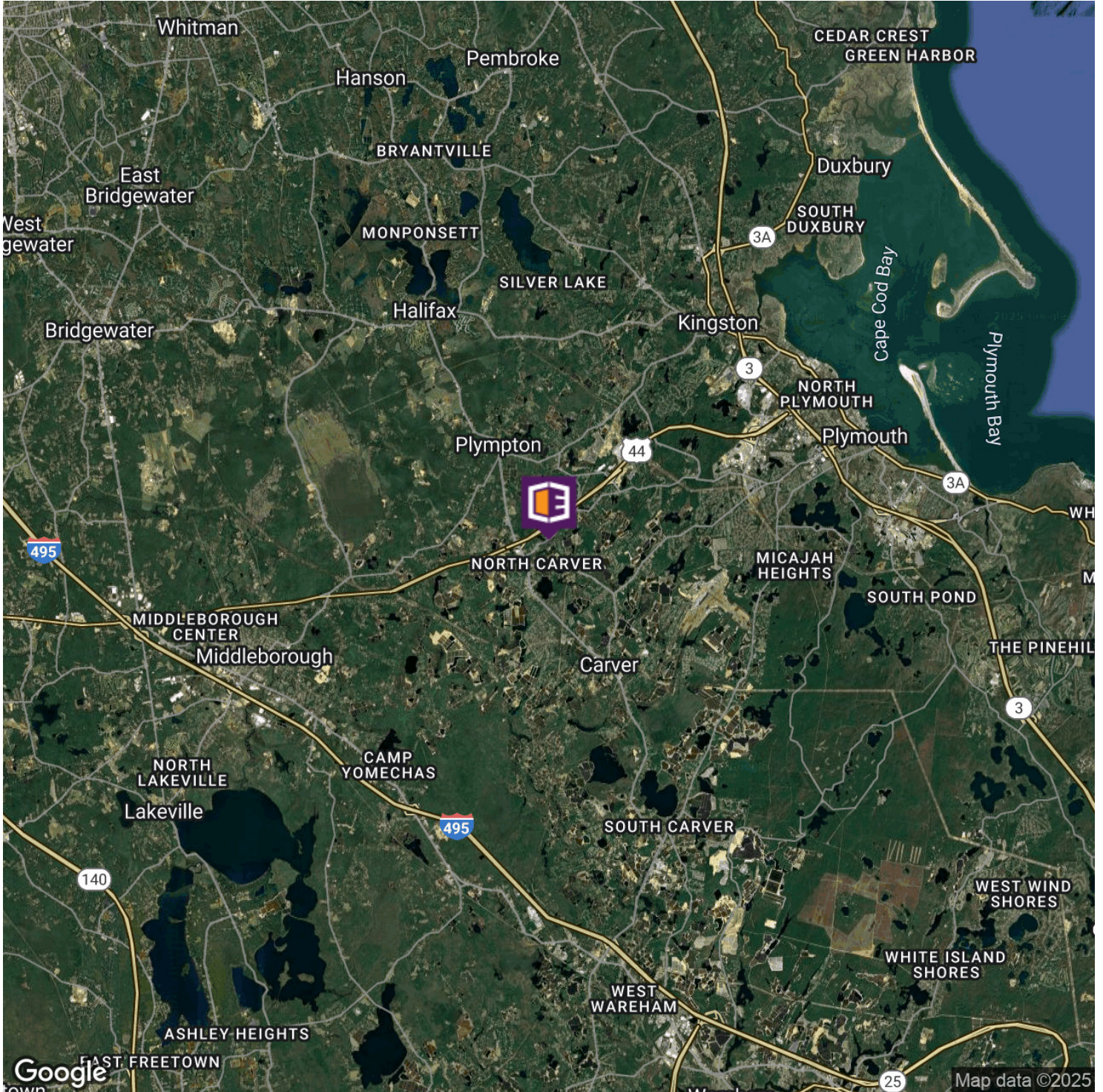
# 20 GATE ST



20 Gate Street  
Carver, MA 02330

## Addendum C

# 20 GATE ST



**KERRICK PIERCE**  
781.919.0800 x710  
kpierce@ellisrealtyadvisors.com

**DAVE ELLIS, SIOR**  
781.919.0800 x701  
dave@ellisrealtyadvisors.com