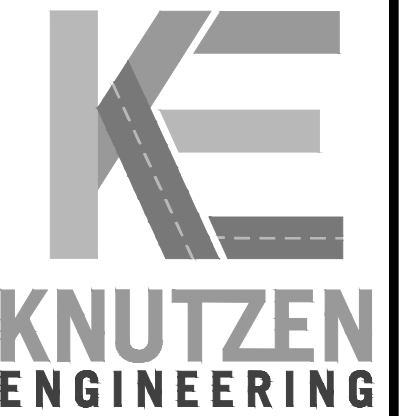


KEY NOTES

- 1 STANDARD ASPHALT SECTION - 2-1/2" THICK ASPHALT OVER 6" TOP COURSE PER WSDOT 9-03.9(3)
- 2 STANDARD CONCRETE SECTION - 4" THICK CONCRETE SIDEWALK OVER 4" TOP COURSE PER WSDOT 9-03.9(3). TROWEL CONTROL JOINTS AT 5' O.C. AND INSTALL EXPANSION JOINTS AT 30' O.C.
- 3 HEAVY CONCRETE SECTION - SLABS TO BE PLACED PER ACI 330R - 6" THICK CONCRETE OVER 6" TOP COURSE PER WSDOT 9-03.9(3). SAWCUT OR TROWEL CONTRACTION JOINTS AT 12' O.C. E.W. CONSTRUCTION JOINTS SHALL BE REINFORCED WITH #6 SMOOTH DOWELS x 14" WITH 6" MIN. EMBEDMENT AT 24' O.C. WITH LIGHT BROOM FINISH
- 4 PAINT WHITE 4" WIDE PARKING STRIPING, LETTERING, AND ACCESSIBLE PARKING SYMBOLS PER ADA REQUIREMENTS AS SHOWN ON PLAN.
- 5 ACCESSIBLE PARKING SIGN
- 6 ACCESSIBLE ASLE
- 7 WHEEL STOP
- 8 TRASH ENCLOSURE
- 9 PAINT 4" WHITE PARKING STRIPE, TYP
- 10 DRIVEWAY, PER CITY STD
- 11 SIDEWALK, PER CITY STD
- 12 EV STALL INFRASTRUCTURE
- 13 WATER SERVICE TAP, PER CITY STD
- 14 8"x6" TEE WITH 6" GATE VALVE AND THRUST BLOCK, PER CITY STD
- 15 FIRE HYDRANT, PER CITY STD
- 16 FIRE LINE, PER CITY STD
- 17 POST INDICATOR VALVE (PIV), PER CITY STD
- 18 FIRE DEPARTMENT CONNECTION (FDC), PER CITY STD
- 19 2" REDUCE PRESSURE BACKFLOW ASSEMBLY, IN HOT BOX, PROVIDE ELECTRICAL CONDUIT FROM BUILDING, PER CITY STD
- 20 2" WATER METER, PER CITY STD
- 21 CLEANOUT TO GRADE
- 22 GREASE INTERCEPTOR
- 23 CORE DRILL (E)SEWER MANHOLE, PER CITY STD
- 24 RETAINING WALL. DESIGN BUILD BY OTHERS. RETAINING WALLS INCLUDING FOOTINGS MUST BE OUT OF THE EXISTING UTILITY EASEMENT AND WILL REQUIRE SEPARATE BUILDING PERMIT.



5401 RIDGELINE DR.  
SUITE 160  
KENNEWICK, WA 99338  
1-509-222-0959  
www.knutzenengineering.com

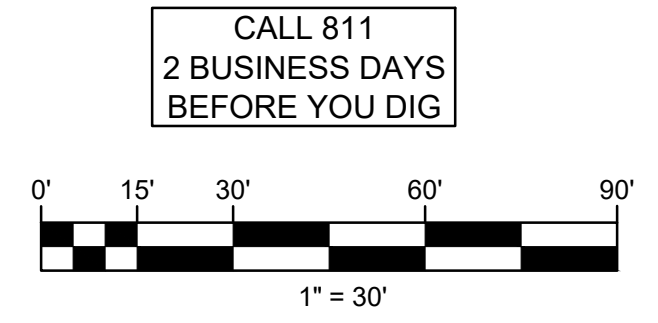
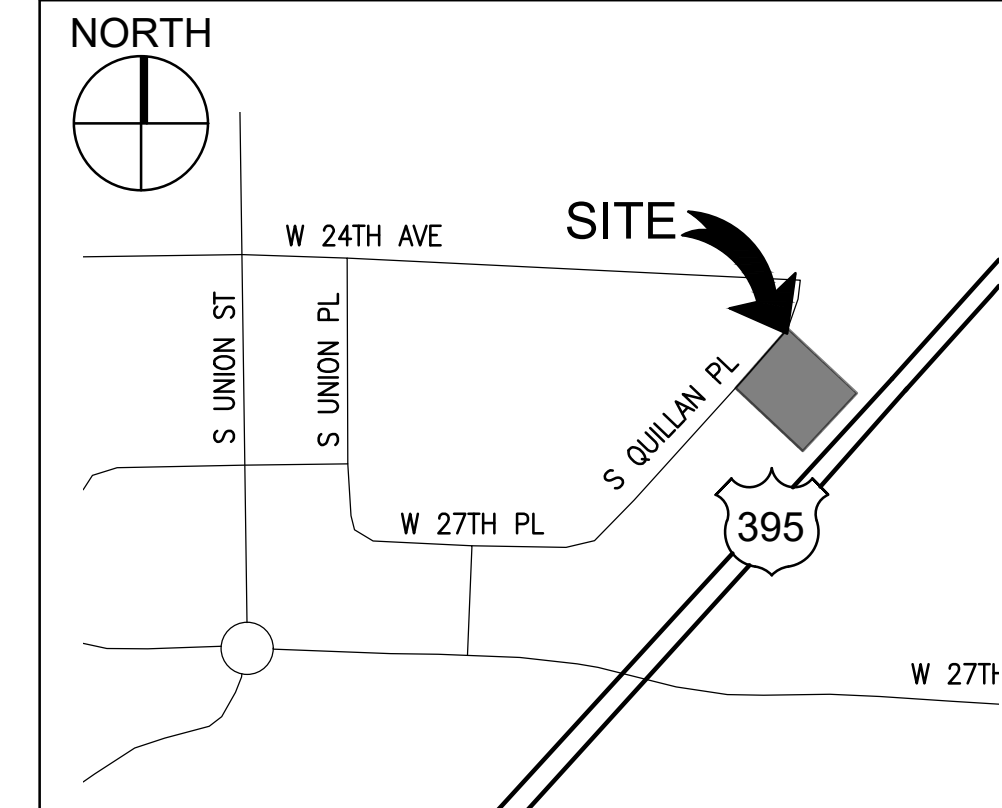
NO.	DATE	DESIGN	CHKD	APPD
1	04/01/24	JAW	RAM	PTK



LEGEND

- ADA COMPLIANT PATH TO SIDEWALK

VICINITY MAP



PARKING ANALYSIS

TYPE	DESCRIPTION	UNITS	REQ. QUANT.	PROV. QUANT.
OFFICE	1/250SF	11,970	48	49
TOTAL STANDARD STALLS			48	49
ADA VAN			1	1
ADA STANDARD			1	1
EV STALLS			5	5

NOT FOR CONSTRUCTION  
TIER II SITE PLAN  
SEAN SIMPER  
DRAFTCO SOUTHRIDGE PLAZA  
2403 S. QUILLAN PLACE, KENNEWICK WA. 99338

APPROVAL		
DESIGN	JAW	02/14/24
CHECKED	RAM	02/14/24
APPROVED	PTK	02/14/24

SCALE: AS NOTED
CADFILE: 23216SP01
JOB No. 23216
REV.

DWG. No. **SP01**