

CHURCH PROPERTY FOR SALE

41,713± SF on 7.89± acres



CNL Specialty Real Estate Services Corp.



Asking Price \$995,000

Reduced to \$850,000

15004 US Hwy 441 - Summerfield, FL 34491

- 7.89± acres
- **Sanctuary Building**
 - 13,853± sq. ft.
 - Built in 1999
 - Sanctuary seats 500±
 - Offices
- **Educational/gymnasium Building**
 - 27,860± sq. ft.
 - Built in 2003
 - Multiple Classrooms
 - Several Offices
 - Fellowship hall
 - Kitchen
- Septic and well
- Paved and grass parking spaces
- Zoned A1, Marion County
- Frontage along US Hwy 441



*Seller will consider offers for separate sale of improvements, such subdivision subject to government and final owner approval. Owner does not guarantee any such parcel subdivision will be approved by government agencies having oversight. Buyer to pay all closing and subdivision costs in the event of a separate sale.

**For additional
information
please contact:**

JOEY BLAKLEY

Associate Broker

407.540.7737

joey.blakley@cnl.com

Licensed Real Estate Broker®

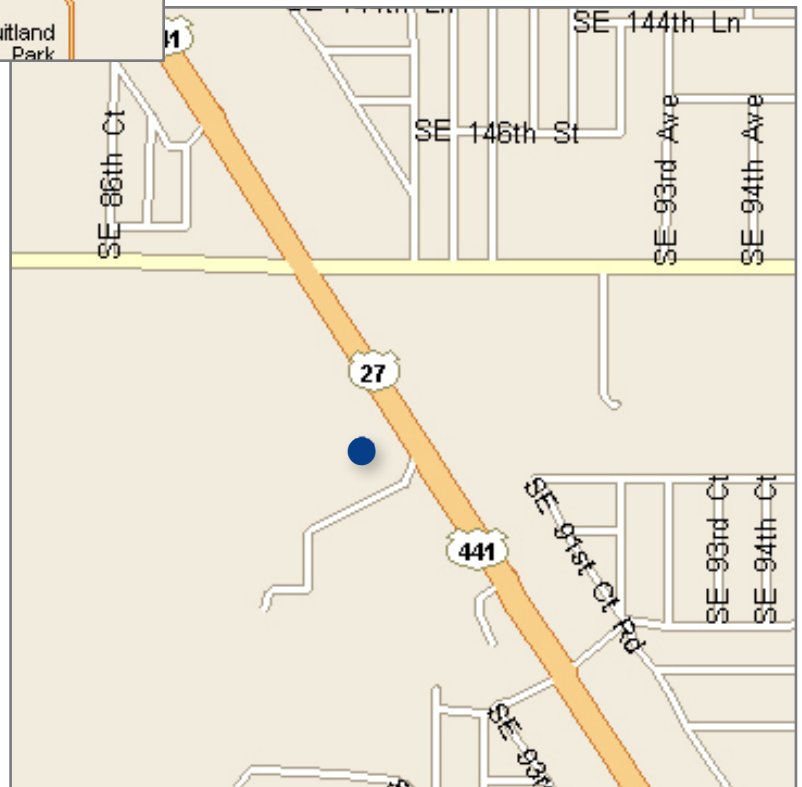
420 South Orange Avenue
Suite 950
Orlando, FL 32801
800.400.5505
fax 407.540.7750

Although all information is furnished regarding for sale, rental or financing is from sources we deem reliable, such information has not been verified and no express representation is made nor is any to be implied as to the accuracy thereof, and it is submitted subject to errors, omissions, changes of price, rental or other conditions, prior sale, lease or financing, or withdrawal without notice.

*To browse our entire portfolio
of available properties visit:
www.cnlcre.com*

CHURCH PROPERTY FOR SALE

41,713± SF on 7.89± acres



Location

Although all information is furnished regarding for sale, rental or financing is from sources we deem reliable, such information has not been verified and no express representation is made nor is any to be implied as to the accuracy thereof, and it is submitted subject to errors, omissions, changes of price, rental or other conditions, prior sale, lease or financing, or withdrawal without notice.

CHURCH PROPERTY FOR SALE

41,713± SF on 7.89± acres



Plat



Aerial

CHURCH PROPERTY FOR SALE

41,713± SF on 7.89± acres



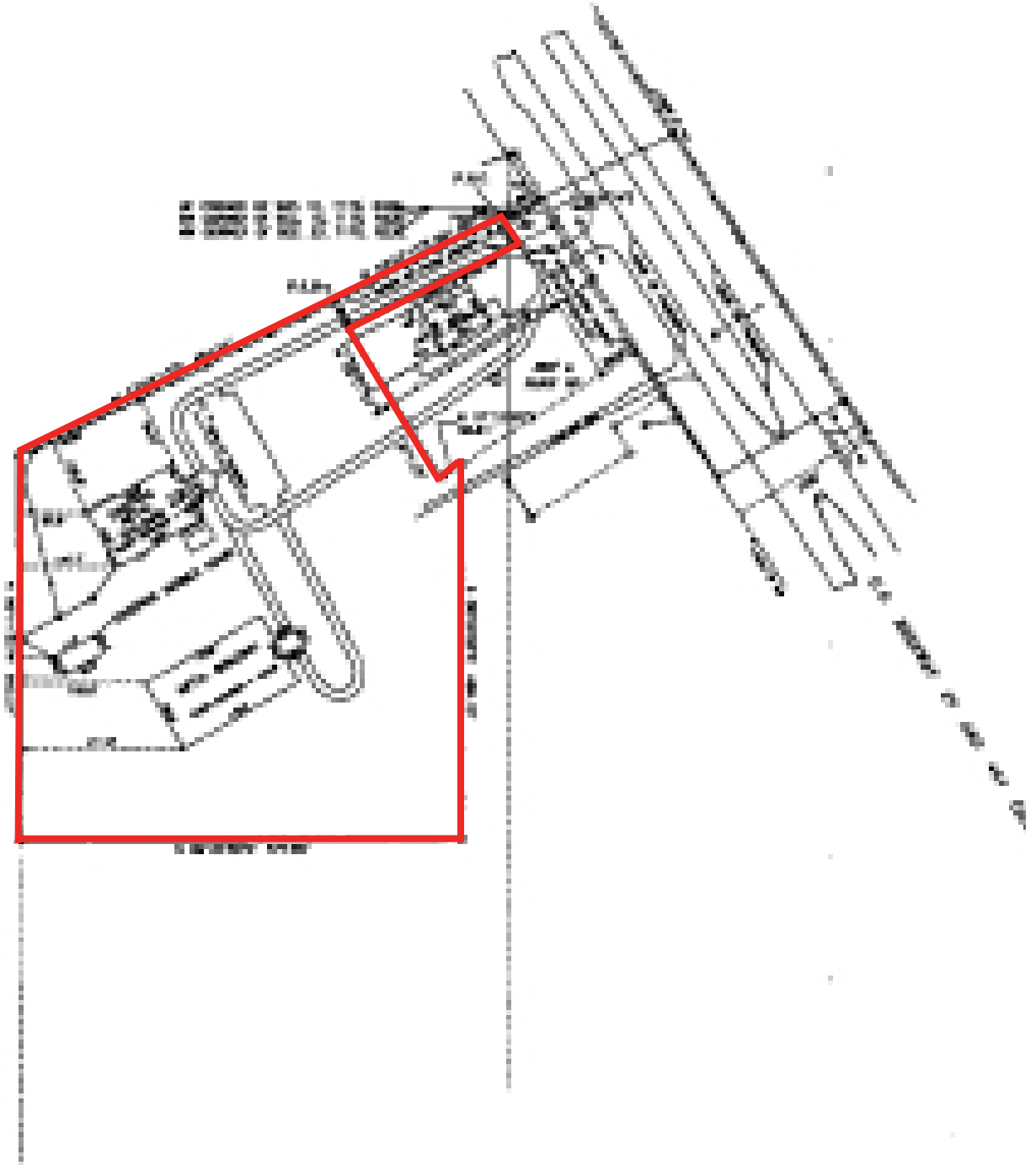
Sanctuary Building Photos



Educational/gymnasium Building Photos

CHURCH PROPERTY FOR SALE

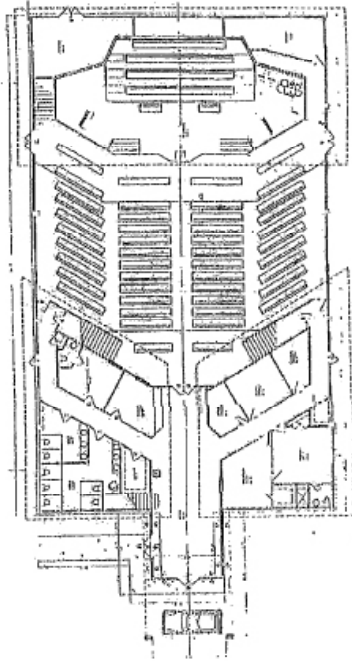
41,713± SF on 7.89± acres



Survey

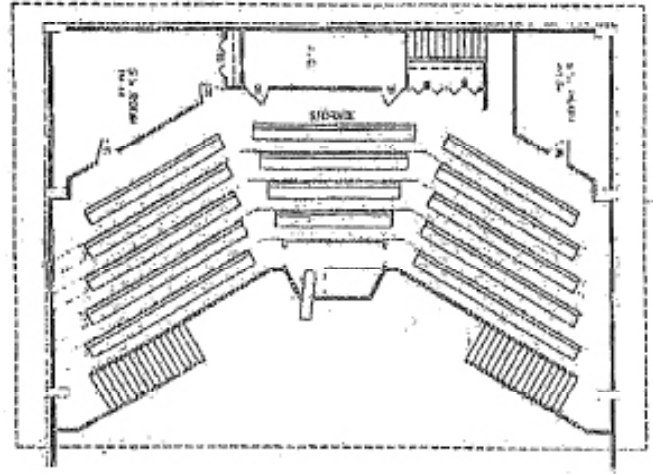
Although all information is furnished regarding for sale, rental or financing is from sources we deem reliable, such information has not been verified and no express representation is made nor is any to be implied as to the accuracy thereof, and it is submitted subject to errors, omissions, changes of price, rental or other conditions, prior sale, lease or financing, or withdrawal without notice.

1st Floor



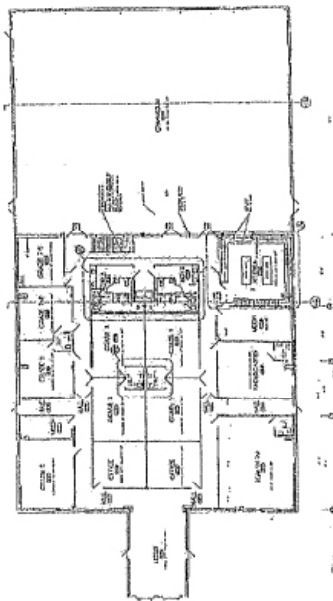
18

2nd Floor



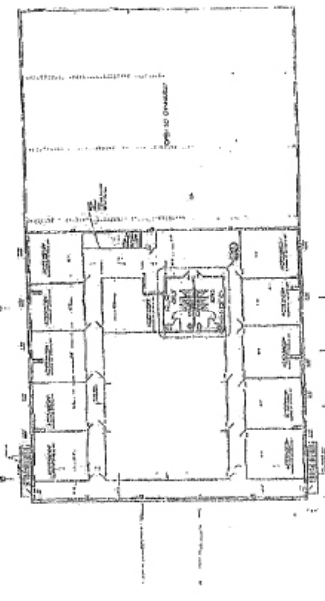
Sanctuary Bldg - Floor Plan

1st Floor



20

2nd Floor



21

Educational/gymnasium Bldg - Floor Plan