

FOR LEASE

1145 Eugenia Place
Carpinteria, CA



Downtown Carpinteria Office Building

Description

Multi-tenant office building located in the heart of downtown Carpinteria, just one block off Linden Avenue. Ground floor floor space available with mountain views. Building tenants include 2 federal government lease areas, an offshore oil decommissioning government contracted business, and real estate investment company. Building recently upgraded with numerous accessibility improvements and security enhancements.

- ▶ Asking Rate: \$2.05 / Sq. Ft. NNN (\$.90)
- ▶ Zoning: CPD
- ▶ Parking: 4 Per 1000 Sq. Ft.
- ▶ Lot Size: 1.59 acres
- ▶ Size: 2,500 - 5,865 Sq. Ft.
- ▶ Floor: Ground Floor
- ▶ Elevator: Yes
- ▶ Building Size: 24,772 Sq. Ft.

Information is deemed reliable, although we have no reason to doubt its accuracy, it is not guaranteed

SANTA BARBARA PROPERTY GROUP
www.sbpropertygroup.com

1933 Cliff Drive, Suite 2
Santa Barbara, CA 93019
805.963.1971

FOR LEASE

1145 Eugenia Place
Carpinteria, CA

1145 EUGENIA OVERHEAD VIEW OF SITE



SANTA BARBARA PROPERTY GROUP
www.sbpropertygroup.com

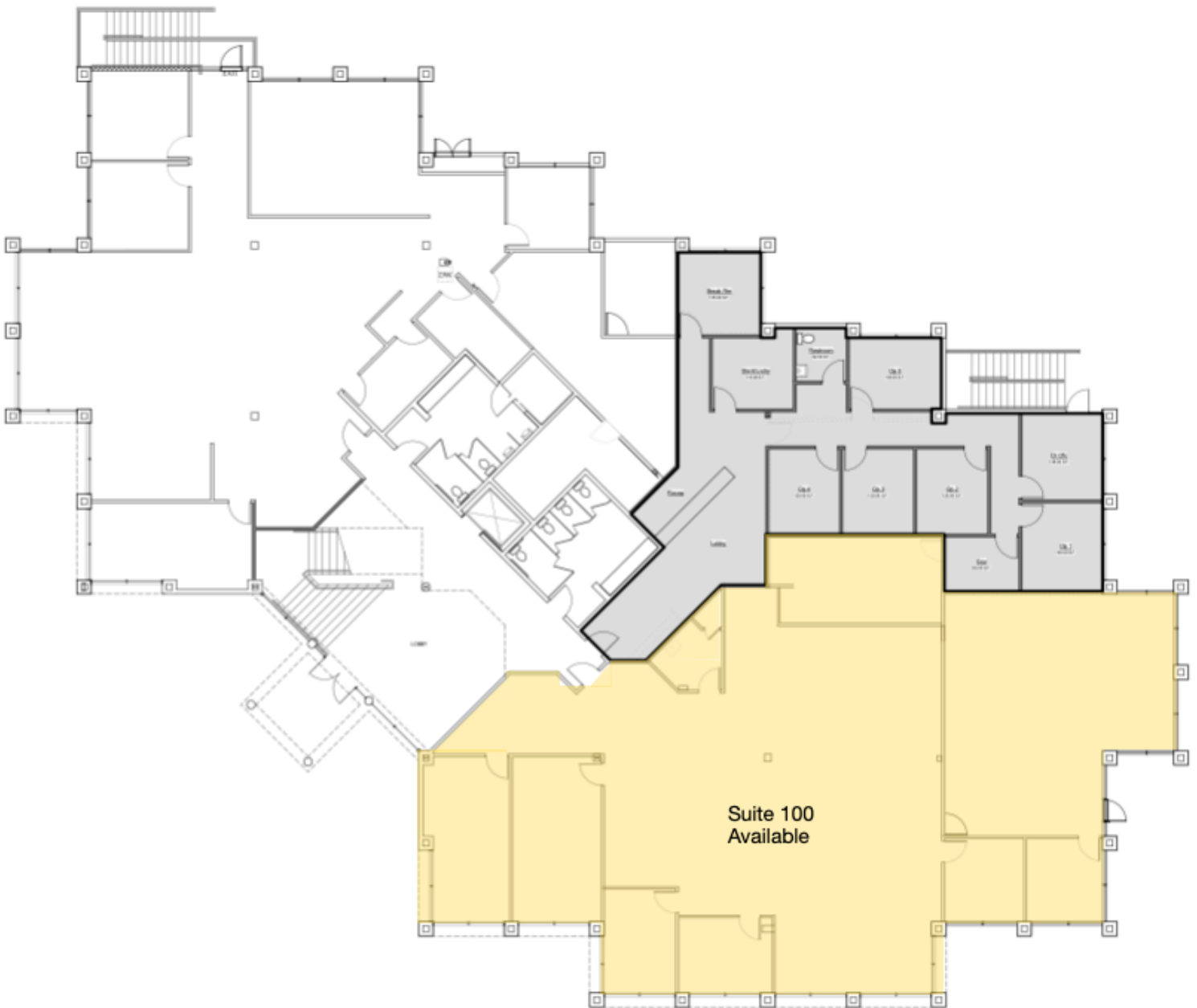
1933 Cliff Drive, Suite 2
Santa Barbara, CA 93019
805.963.1971

FOR LEASE

1145 Eugenia Place
Carpinteria, CA

FLOOR PLAN
GROUND FLOOR

AVAILABLE
2500- 5,865 SQ. FT.



SANTA BARBARA PROPERTY GROUP
www.sbpropertygroup.com

1933 Cliff Drive, Suite 2
Santa Barbara, CA 93019
805.963.1971