

LEASE

13.71 ACRES INDUSTRIAL LAND WITH OFFICE

20065 SE Hawthorne Rd Hawthorne, FL 32640



OFFERING SUMMARY

Lease Rate:	\$5,000 per month (NNN)
Available SF:	2,560 SF
Lot Size:	13.4 Acres
Zoning:	IL

PROPERTY OVERVIEW

13.71-acre industrial site with newly constructed office and warehouse, three-phase power, city utilities, and IL zoning. Cleared and ready for industrial operations, contractor yard, equipment storage, fleet parking, or future development. Excellent visibility on State Road 20 across from Hawthorne Industrial Park and just 14 miles from Gainesville. Opportunity Zone location.

PROPERTY HIGHLIGHTS

- Opportunity Zone
- 13.71 Acres
- Industrial Zoning

Perry Pursell
(352) 665-9731

Shasta Schoellhorn
(352) 922-0048



**COLDWELL BANKER
COMMERCIAL**
M.M. PARRISH REALTORS

LEASE

13.71 ACRES INDUSTRIAL LAND WITH OFFICE

20065 SE Hawthorne Rd Hawthorne, FL 32640



Perry Pursell
(352) 665-9731

Shasta Schoellhorn
(352) 922-0048



**COLDWELL BANKER
COMMERCIAL**
M.M. PARRISH REALTORS

LEASE

13.71 ACRES INDUSTRIAL LAND WITH OFFICE

20065 SE Hawthorne Rd Hawthorne, FL 32640



Perry Pursell
(352) 665-9731

Shasta Schoellhorn
(352) 922-0048

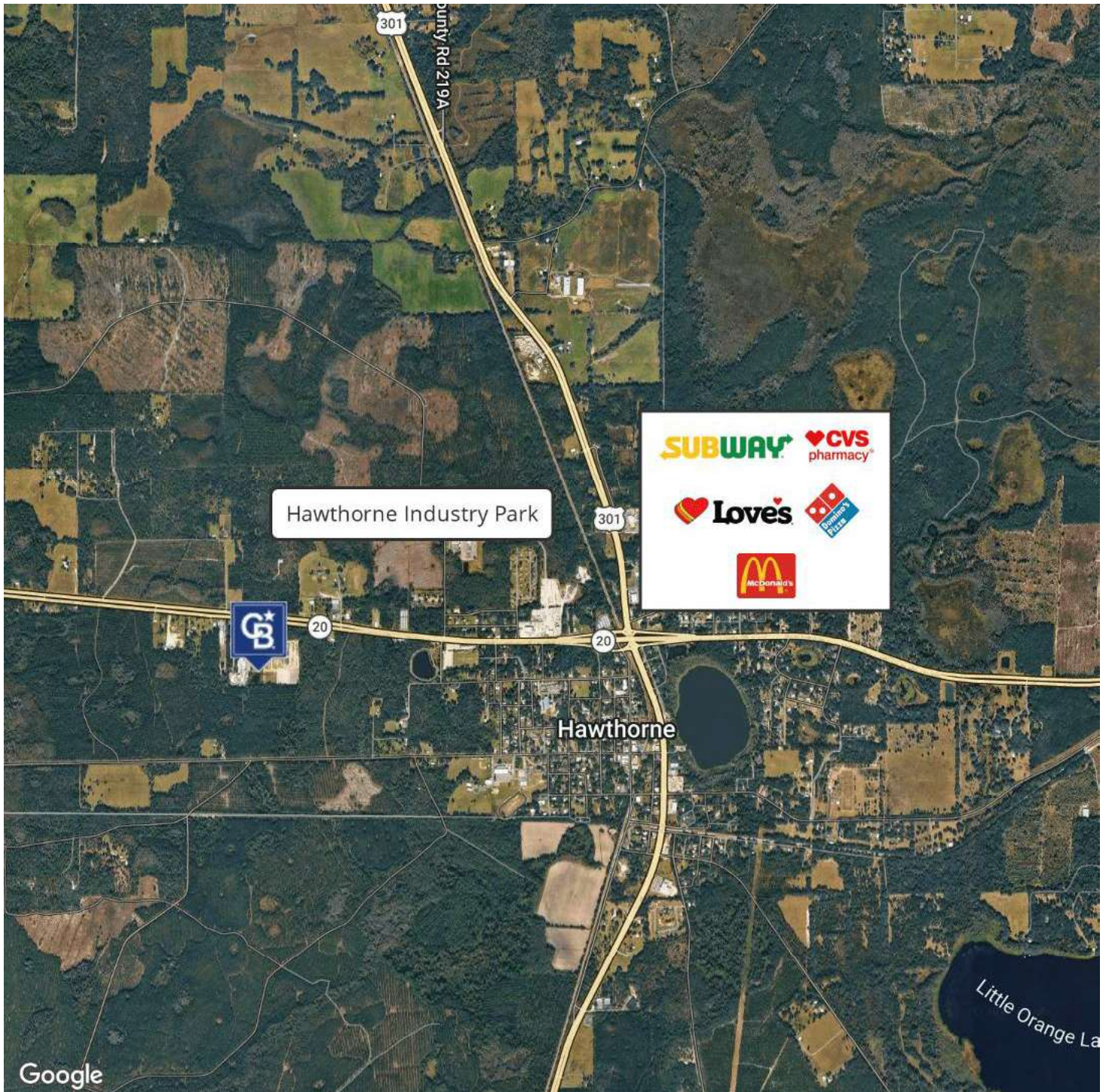


**COLDWELL BANKER
COMMERCIAL**
M.M. PARRISH REALTORS

LEASE

13.71 ACRES INDUSTRIAL LAND WITH OFFICE

20065 SE Hawthorne Rd Hawthorne, FL 32640



Perry Pursell
(352) 665-9731

Shasta Schoellhorn
(352) 922-0048



**COLDWELL BANKER
COMMERCIAL**
M.M. PARRISH REALTORS

LEASE

13.71 ACRES INDUSTRIAL LAND WITH OFFICE

20065 SE Hawthorne Rd Hawthorne, FL 32640



PERRY PURSELL

Commercial Sales Associate

Cell: (352) 665-9731
p2venture@aol.com



SHASTA SCHOELLHORN

Commercial Sales Associate

Cell: (352) 922-0048
shasta@mmparrish.com

FL #259506759

Perry Pursell
(352) 665-9731

Shasta Schoellhorn
(352) 922-0048



COLDWELL BANKER
COMMERCIAL
M.M. PARRISH REALTORS