

Mira Vista

2705 BEE CAVES ROAD | AUSTIN, TX | 78746

2,134 SF AVAILABLE

SOUTHWEST SUBMARKET



Mira Vista

2705 BEE CAVES ROAD | AUSTIN, TX | 78746

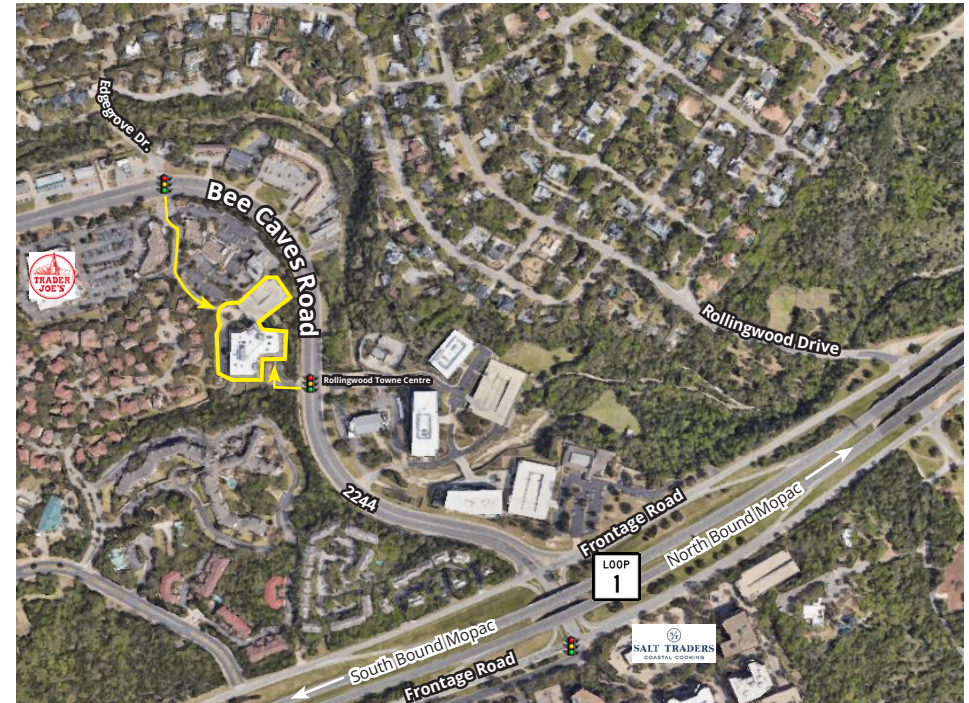
2,134 SF AVAILABLE

ABOUT MIRA VISTA

Located in the scenic Southwest submarket of Austin, The Mira Vista office building offers excellent access from Mopac Expressway and Bee Caves Road and is less than five minutes from downtown.

The site offers extensive Austin skyline views and is within walking distance to restaurants and retail.

The property holds a prestigious Energy Star rating and offers Class A finishes.



PROPERTY FEATURES

- Multitenant office
- 4.5/1,000 Structured and Surface Parking
- Extensive surrounding panoramic city views
- Class A finishes
- Shower facilities
- Close proximity to Zilker Park & Lady Bird Lake Hike and Bike Trail



Doug Thomas
512.695.3985
doug@liveoak.com

Scott Flack
512.695.4803
scott@liveoak.com

Ben Williamson
256.996.5729
ben@liveoak.com

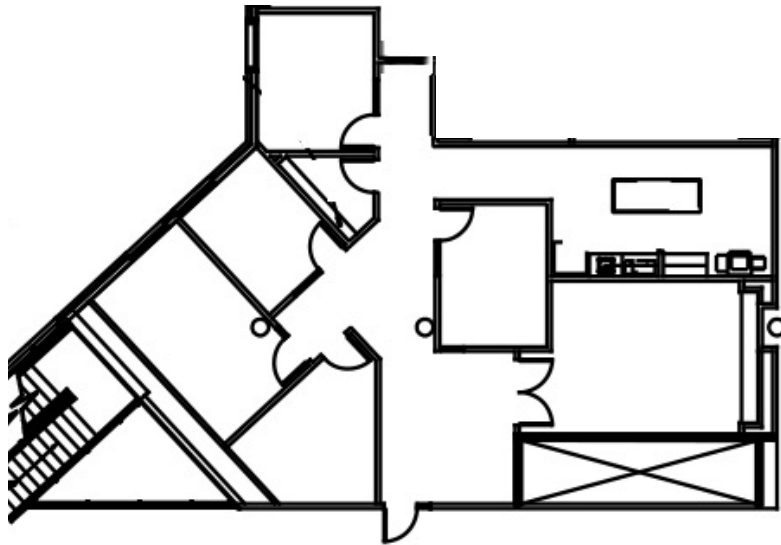
Mira Vista

2705 BEE CAVES ROAD | AUSTIN, TX | 78746

SECOND FLOOR

SUITE 200

Square Feet	2,134 SF
Availability	Immediately



Doug Thomas
512.695.3985
doug@liveoak.com

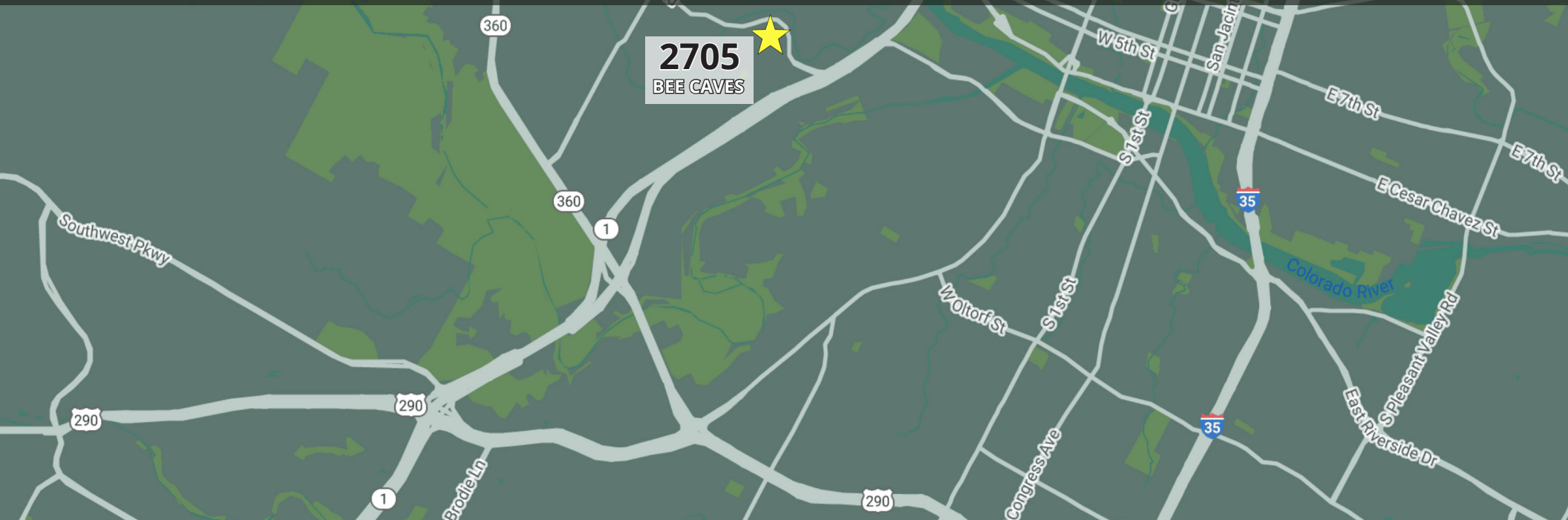
Scott Flack
512.695.4803
scott@liveoak.com

Ben Williamson
256.996.5729
ben@liveoak.com

Mira Vista

2705 BEE CAVES ROAD | AUSTIN, TX | 78746

LOCATION & DRIVE DISTANCES



DRIVE DISTANCES

Downtown Austin	4.5 miles
The Domain	12 miles
Austin-Bergstrom International Airport	12 miles
Round Rock	21 miles

Dripping Springs	20 miles
Bastrop	35 miles
San Antonio	82 miles



Doug Thomas
512.695.3985
doug@liveoak.com

Scott Flack
512.695.4803
scott@liveoak.com

Ben Williamson
256.996.5729
ben@liveoak.com