

SITES FROM 139,360 SF TO 605,879 SF
AVAILABLE (DIVISIBLE TO 5,000 SF)

MOODY WAREHOUSE BUILDINGS

Industrial Warehouse Space for Lease

GALVESTON | TEXAS



CBRE

BUILDING 1

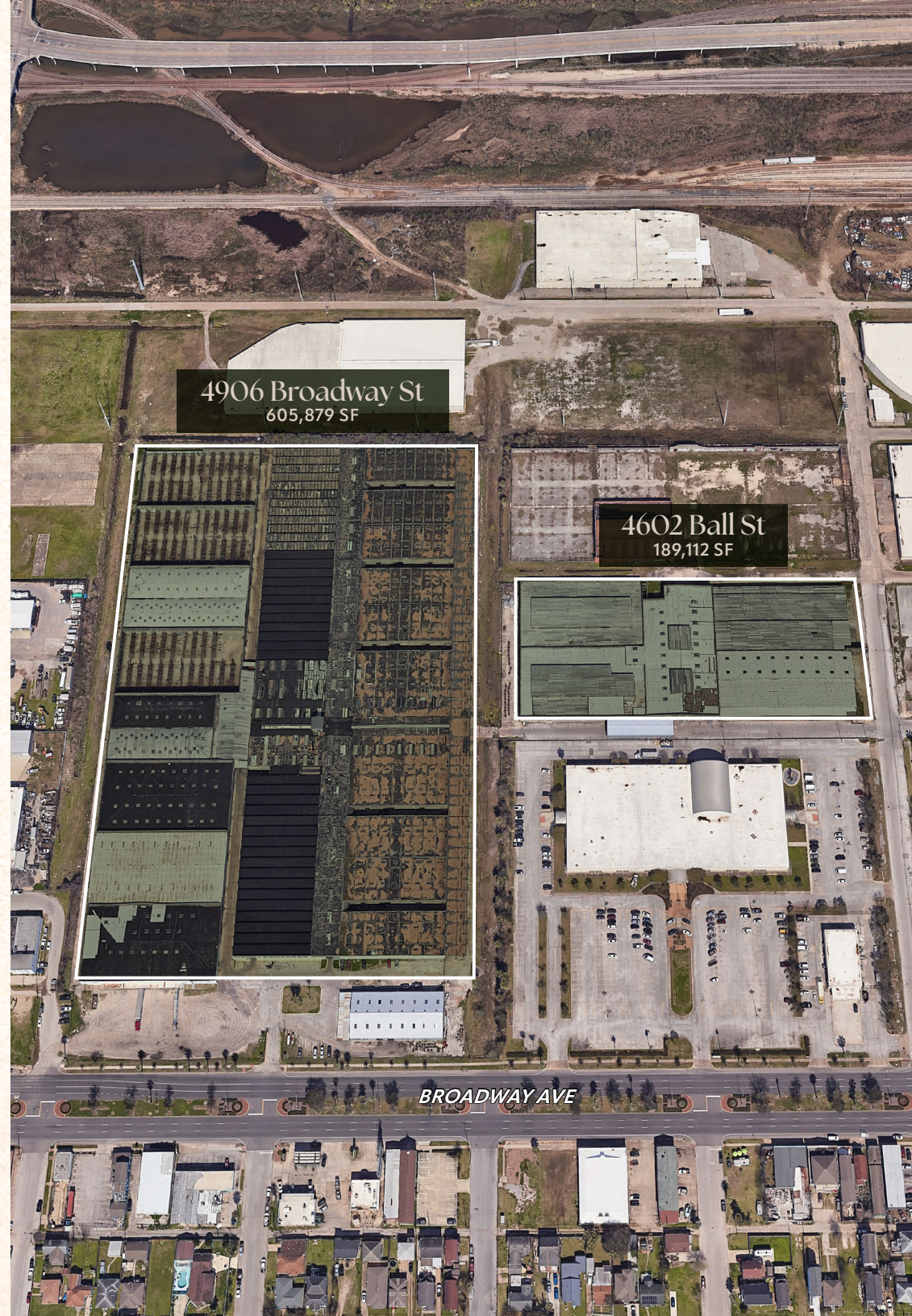
(4906 Broadway St)

- 605,879 SF TOTAL (DIVISIBLE TO 5,000 SF)
- MINIMAL OFFICE
- 19.26 ACRES
- 7 DOCK HIGH DOORS
- 3 DRIVE-IN RAMPS
- 15'-20' CLEAR HEIGHT
- SPRINKLERED
- CITY UTILITIES

BUILDING 2

(4602 Ball St)

- 189,112 SF TOTAL
- MINIMAL OFFICE
- 6.75 ACRES
- 1 DOCK HIGH DOOR
- 2 DRIVE-IN RAMPS
- 15' CLEAR HEIGHT
- SPRINKLERED
- CITY UTILITIES





BUILDING 3 (4200 Ball St)

- 167,871 SF TOTAL
- MINIMAL OFFICE
- 4.06 ACRES
- 5 DOCK HIGH DOOR
- 2 DRIVE-IN RAMPS
- 15' CLEAR HEIGHT
- SPRINKLERED
- CITY UTILITIES

BUILDING 4 (620 37th St)

- 139,360 SF TOTAL
- MINIMAL OFFICE
- 4.25 ACRES
- 1 DOCK HIGH DOORS
- 2 DRIVE-IN RAMPS
- 15' CLEAR HEIGHT
- SPRINKLERED
- CITY UTILITIES

MOODY WAREHOUSE BUILDINGS

Industrial Warehouse Space for Lease

GALVESTON | TEXAS



CITY OF HOUSTON: 49 MILES
PORT OF HOUSTON: 48 MILES
(Barbours Cut & Bayport Terminals)

FOR ADDITIONAL INFORMATION, PLEASE CONTACT:

NICK BERGMANN
Vice President
+1 713 577 1772
nick.bergmann@cbre.com

ANDREW JEWETT
Senior Vice President
+1 713 577 1735
andrew.jewett@cbre.com

BARRETT VON BLON
First Vice President
+1 713 577 1777
barrett.vonblon@cbre.com

CBRE

© 2024 CBRE, Inc. All rights reserved. This information has been obtained from sources believed reliable, but has not been verified for accuracy or completeness. You should conduct a careful, independent investigation of the property and verify all information. Any reliance on this information is solely at your own risk. CBRE and the CBRE logo are service marks of CBRE, Inc. All other marks displayed on this document are the property of their respective owners. Photos herein are the property of their respective owners. Use of these images without the express written consent of the owner is prohibited.