

VIEW VIDEO 

VIEW ONLINE 

[colliers.com/chicago](https://colliers.com/chicago)



1,608sf Outlot Available  
175th St & Kedzie Ave.

**FOR LEASE** 3175 W 175th St #B, Hazel Crest // Illinois

1,608sf available for Lease. Located at signalized intersection with full access off both 175th St and Kedzie Ave. This grocery anchored outlot is located along the major retail corridor in the heart of Hazel Crest. Across the street from Advocate South Suburban Hospital and surrounded by national and local tenants, Excellent visibility with pylon on hard corner with a combined VPD over 32,500.

# Negotiable

Contact us:

**Chris Irwin**

Senior Vice President

847.698.8193

[Chris.Irwin@Colliers.com](mailto:Chris.Irwin@Colliers.com)

**Brad Belden**

Senior Vice President

847.698.8232

[Brad.Belden@colliers.com](mailto:Brad.Belden@colliers.com)



Colliers - Chris Irwin (Chicago)  
71 South Wacker Drive | Suite 3700  
Chicago, IL 60606  
P: 847.698.8193

This document has been prepared by Colliers International for advertising and general information only. Colliers International makes no guarantees, representations or warranties of any kind, expressed or implied, regarding the information including, but not limited to, warranties of content, accuracy and reliability. Any interested party should undertake their own inquiries as to the accuracy of the information. Colliers International excludes unequivocally all inferred or implied terms, conditions and warranties arising out of this document and excludes all liability for loss and damages arising there from. This publication is the copyrighted property of Colliers International and/or its licensor(s). ©2021. All rights reserved.

EXECUTIVE SUMMARY



**OFFERING SUMMARY**

Lease Rate:	Negotiable
Building Size:	3,741 SF
Available SF:	1,608 SF
Traffic Count:	13,500

**PROPERTY OVERVIEW**

1,608sf available for Lease. Located at signalized intersection with full access off both 175th St and Kedzie Ave. This grocery anchored outlet is located along the major retail corridor in the heart of Hazel Crest. Across the street from Advocate South Suburban Hospital and surrounded by national and local tenants, Excellent visibility with pylon on hard corner with a combined VPD over 32,500.

**PROPERTY HIGHLIGHTS**

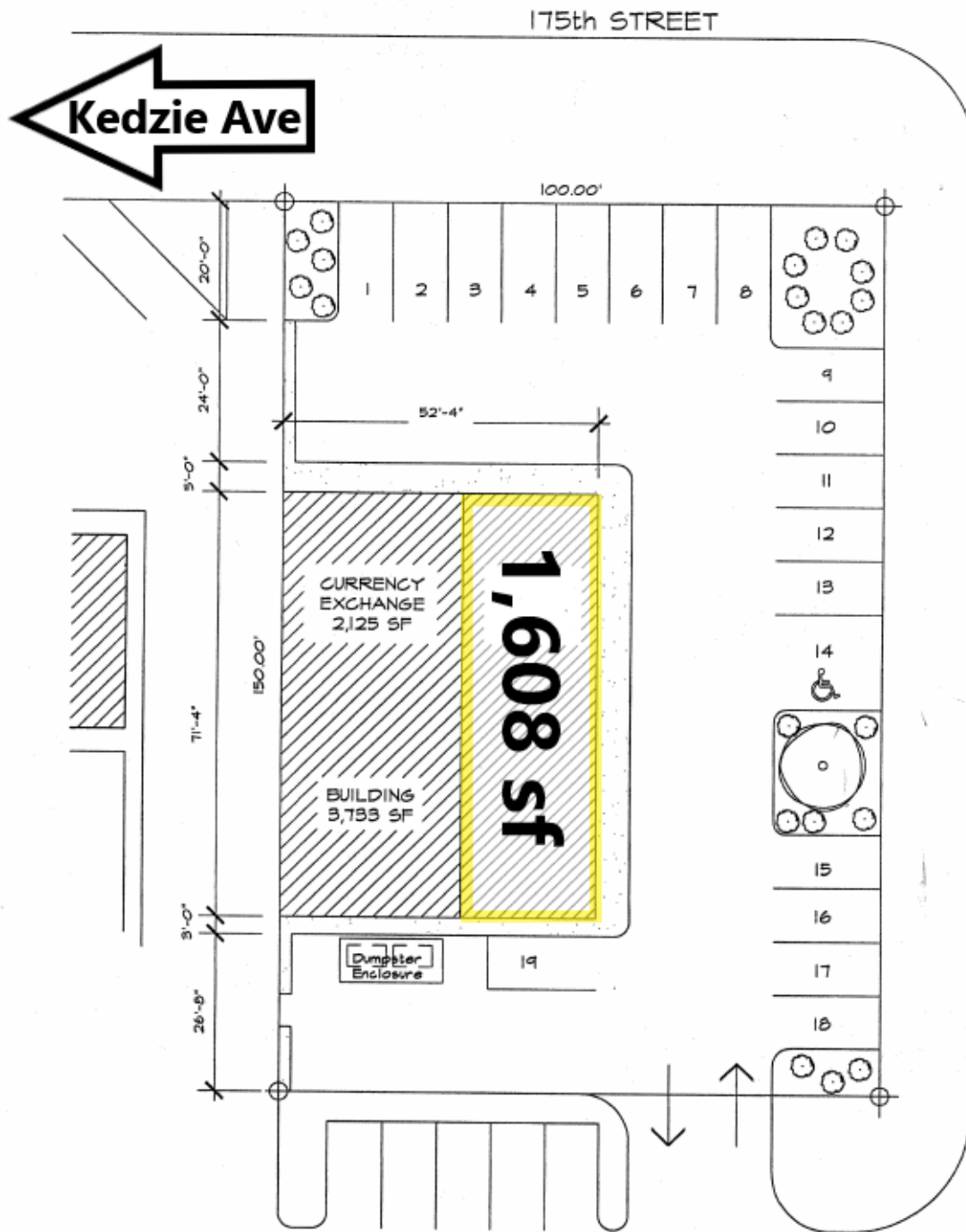
- Excellent visibility along 175th St. and Kedzie Ave with frontage and pylon sign
- Located in the heart of Hazel Crest along main retail corridor
- Combined VPD over 32,500
- Full access points from 175th St and Kedzie Ave
- Close proximity to Advocate South Suburban Hospital with 291 beds
- 3 miles southwest from I294 and I80
- Surrounded by national and local tenants

**Chris Irwin**  
 Senior Vice President  
 847.698.8193  
 Chris.Irwin@Colliers.com

**Brad Belden**  
 Senior Vice President  
 847.698.8232  
 Brad.Belden@colliers.com



SITE PLAN

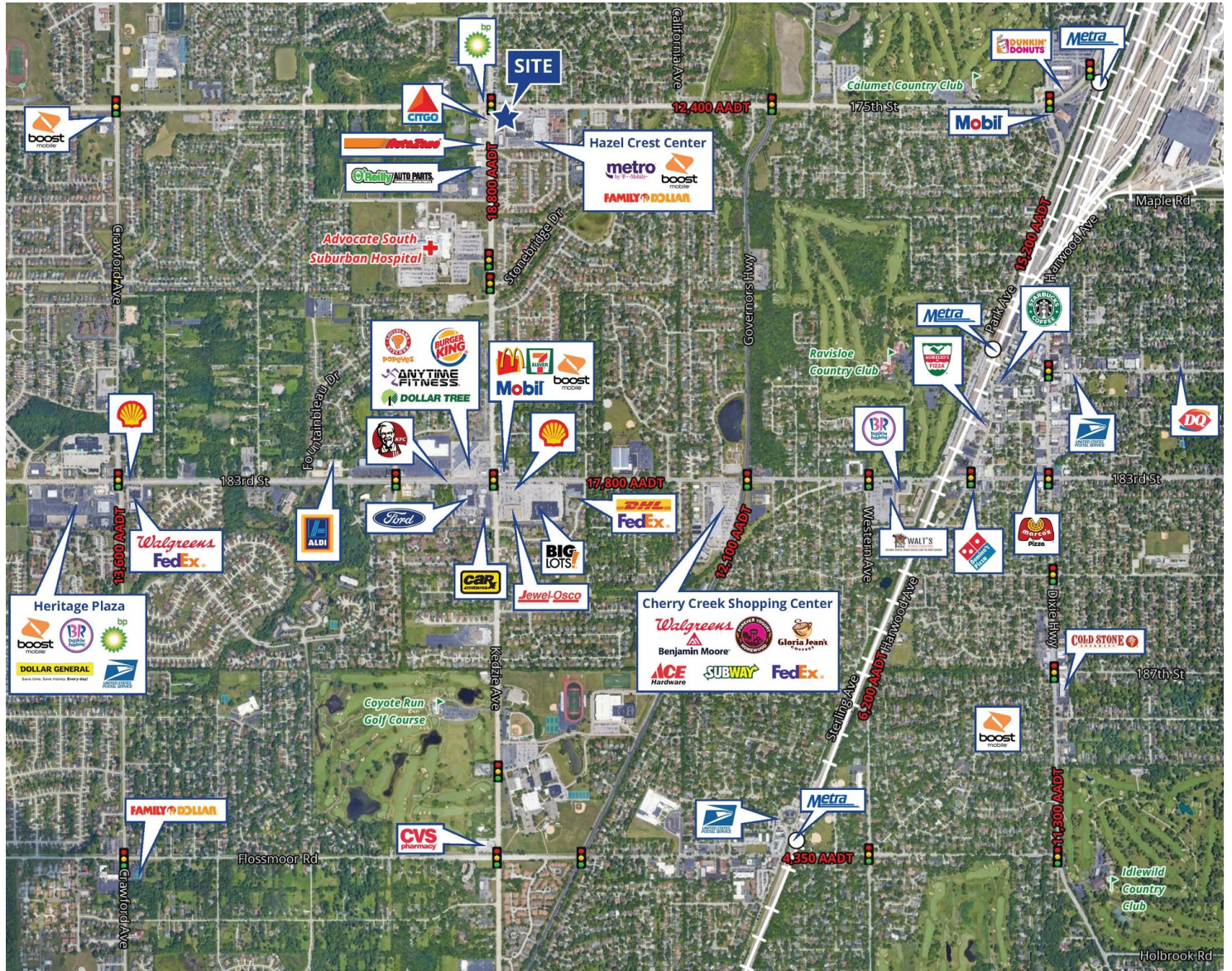


**Chris Irwin**  
Senior Vice President  
847.698.8193  
Chris.Irwin@Colliers.com

**Brad Belden**  
Senior Vice President  
847.698.8232  
Brad.Belden@colliers.com



RETAIL MAP

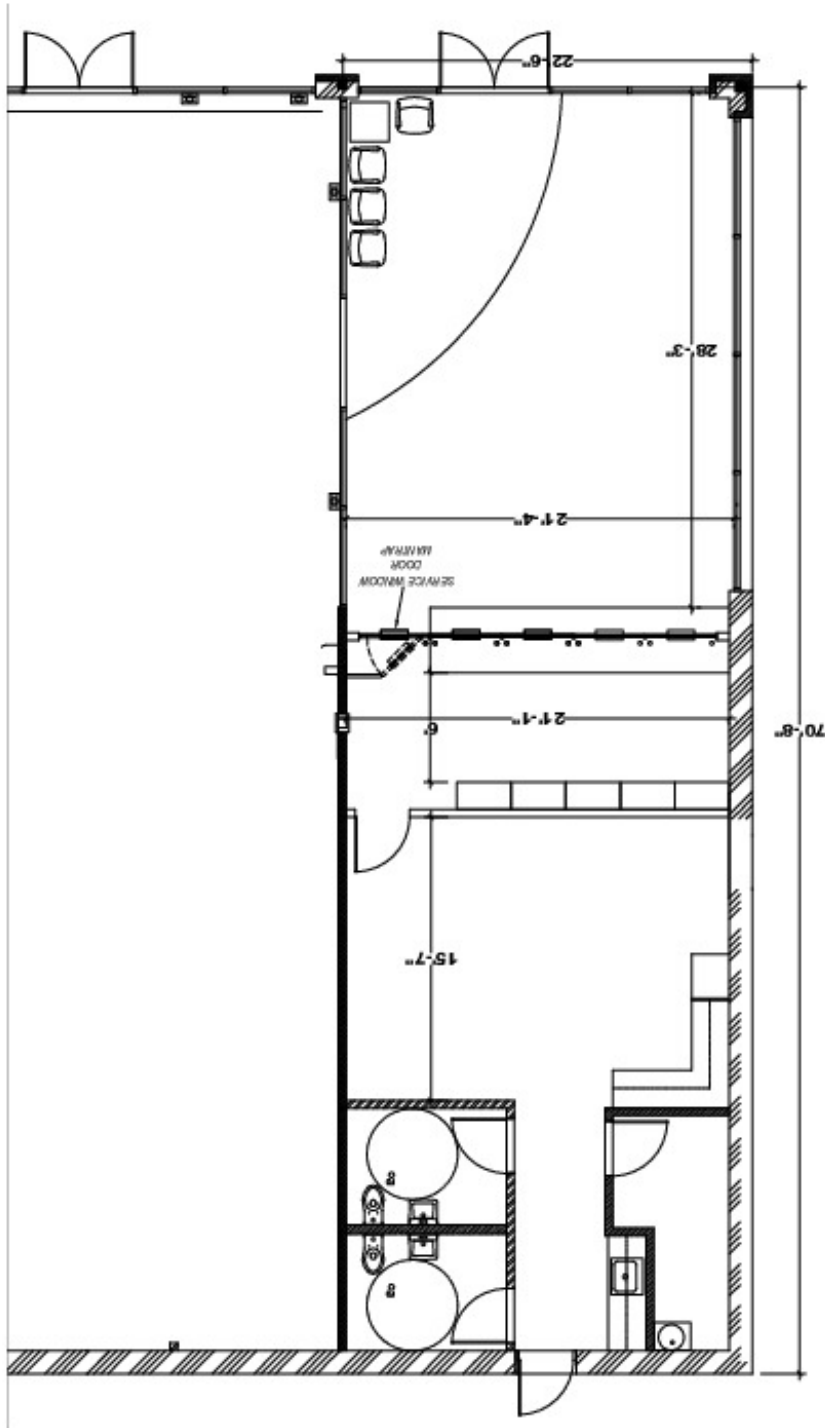


**Chris Irwin**  
 Senior Vice President  
 847.698.8193  
 Chris.Irwin@Colliers.com

**Brad Belden**  
 Senior Vice President  
 847.698.8232  
 Brad.Belden@colliers.com



FLOOR PLAN



**Chris Irwin**  
Senior Vice President  
847.698.8193  
Chris.Irwin@Colliers.com

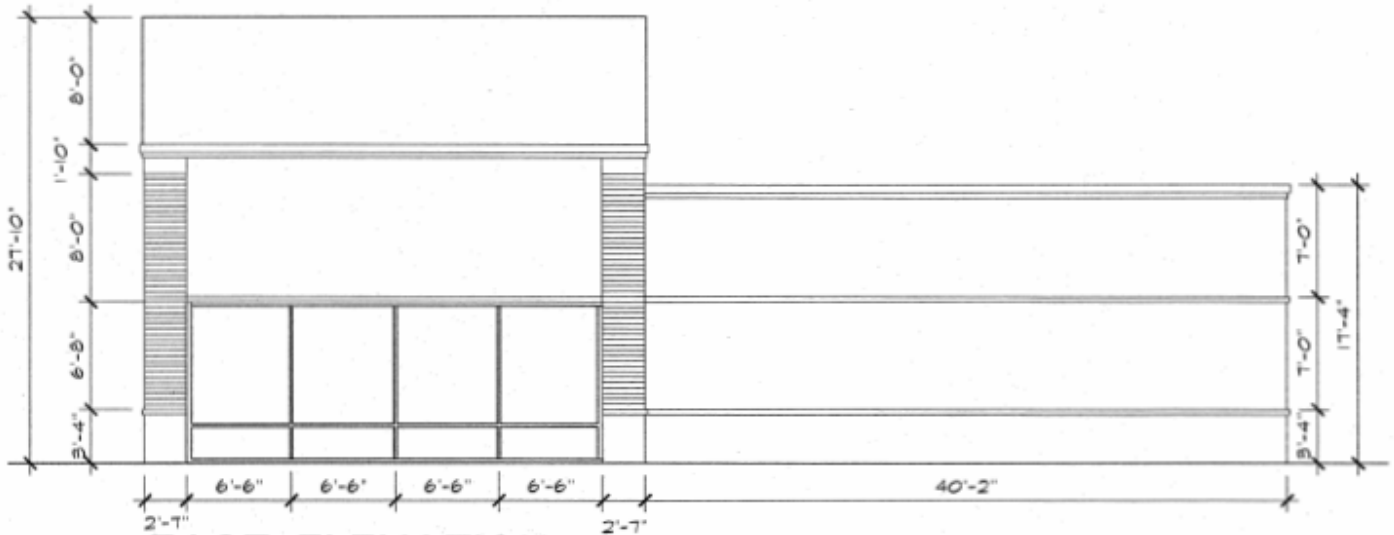
**Brad Belden**  
Senior Vice President  
847.698.8232  
Brad.Belden@colliers.com



ELEVATIONS



**1 SOUTH ELEVATION**  
1/8"=1'-0"



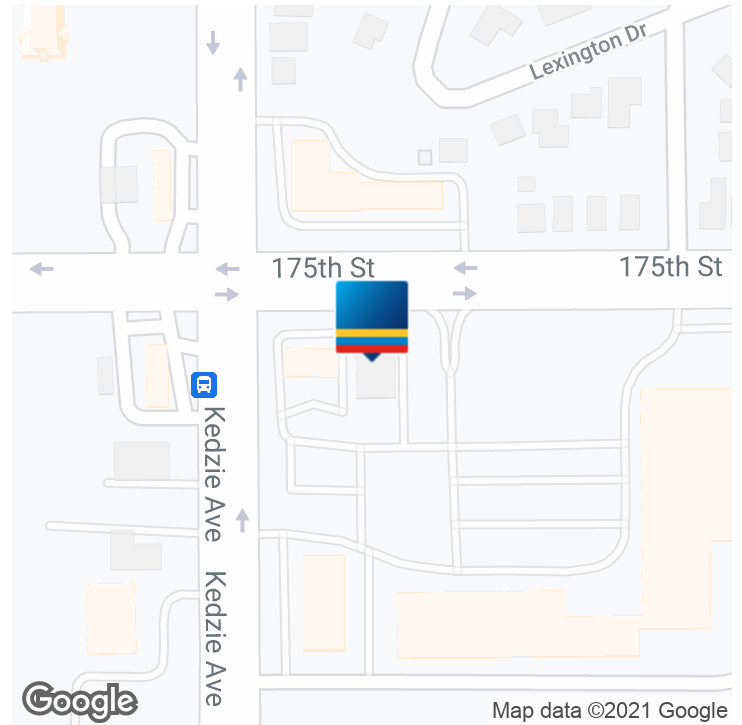
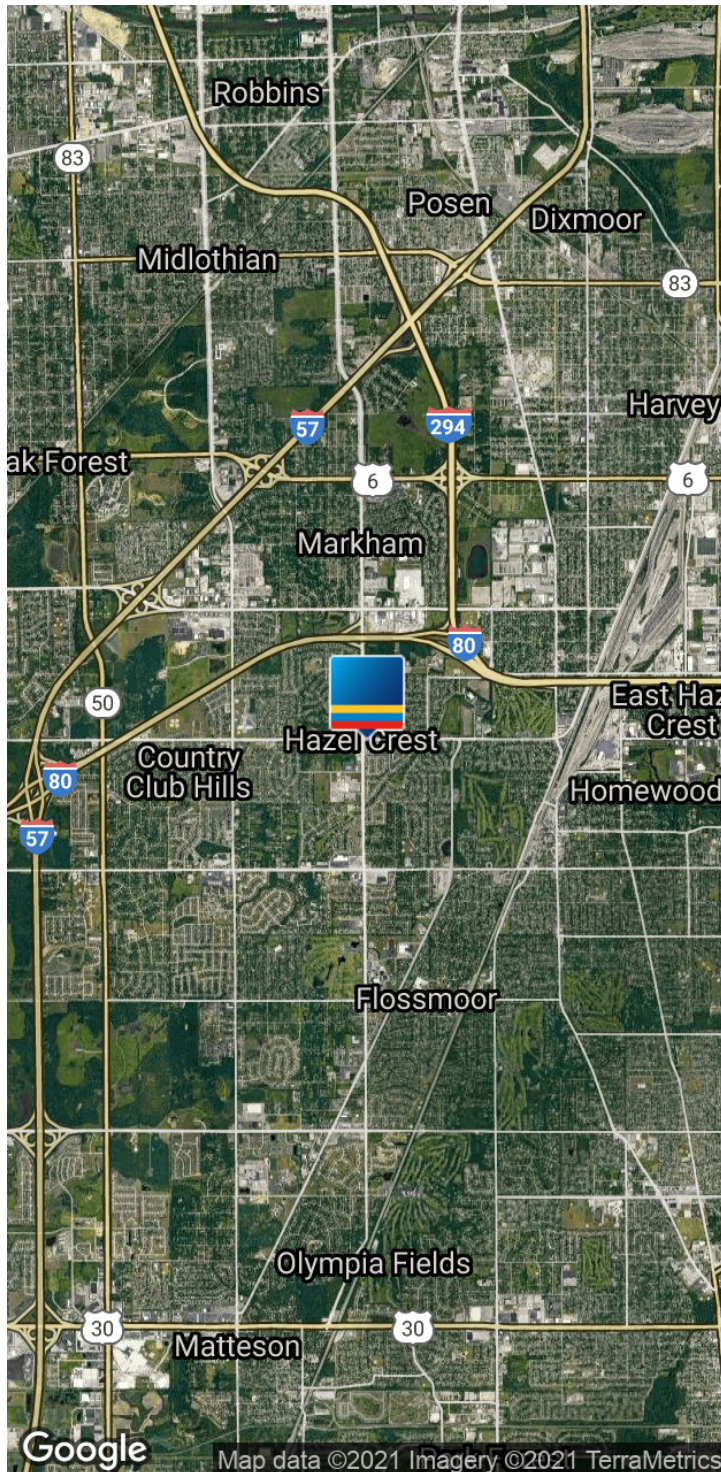
**2 EAST ELEVATION**  
1/8"=1'-0"

**Chris Irwin**  
Senior Vice President  
847.698.8193  
Chris.Irwin@Colliers.com

**Brad Belden**  
Senior Vice President  
847.698.8232  
Brad.Belden@colliers.com



LOCATION MAP



DEMOGRAPHICS

	1 MILE	3 MILES	5 MILES
Total population	8,471	101,527	266,351
Median age	34.4	35.8	35.9
Median age (Male)	30.6	34.7	35.1
Median age (Female)	37.1	36.9	36.6
Total households	3,091	35,326	92,429
Total persons per HH	2.7	2.9	2.9
Average HH income	\$84,564	\$88,309	\$88,764
Average house value	\$181,687	\$275,041	\$316,670

LOCATION OVERVIEW

Hazel Crest is a suburb of Chicago with a population of 13,549. Hazel Crest is in Cook County. Living in Hazel Crest offers residents a dense suburban feel and most residents own their homes. In Hazel Crest there are a lot of coffee shops and parks. Many families and young professionals live in Hazel Crest and residents tend to be liberal.

**Chris Irwin**  
Senior Vice President  
847.698.8193  
Chris.Irwin@Colliers.com  
f t i in

**Brad Belden**  
Senior Vice President  
847.698.8232  
Brad.Belden@colliers.com

