



# TEMPE

CITY CENTER



1400 — 1470 EAST SOUTHERN AVENUE

**CBRE**

# PROPERTY FEATURES



Move-in ready suites available



Exterior building and monument signage available



Beautiful park setting with a stream, grass, path and benches



Secured covered parking structure attached to building



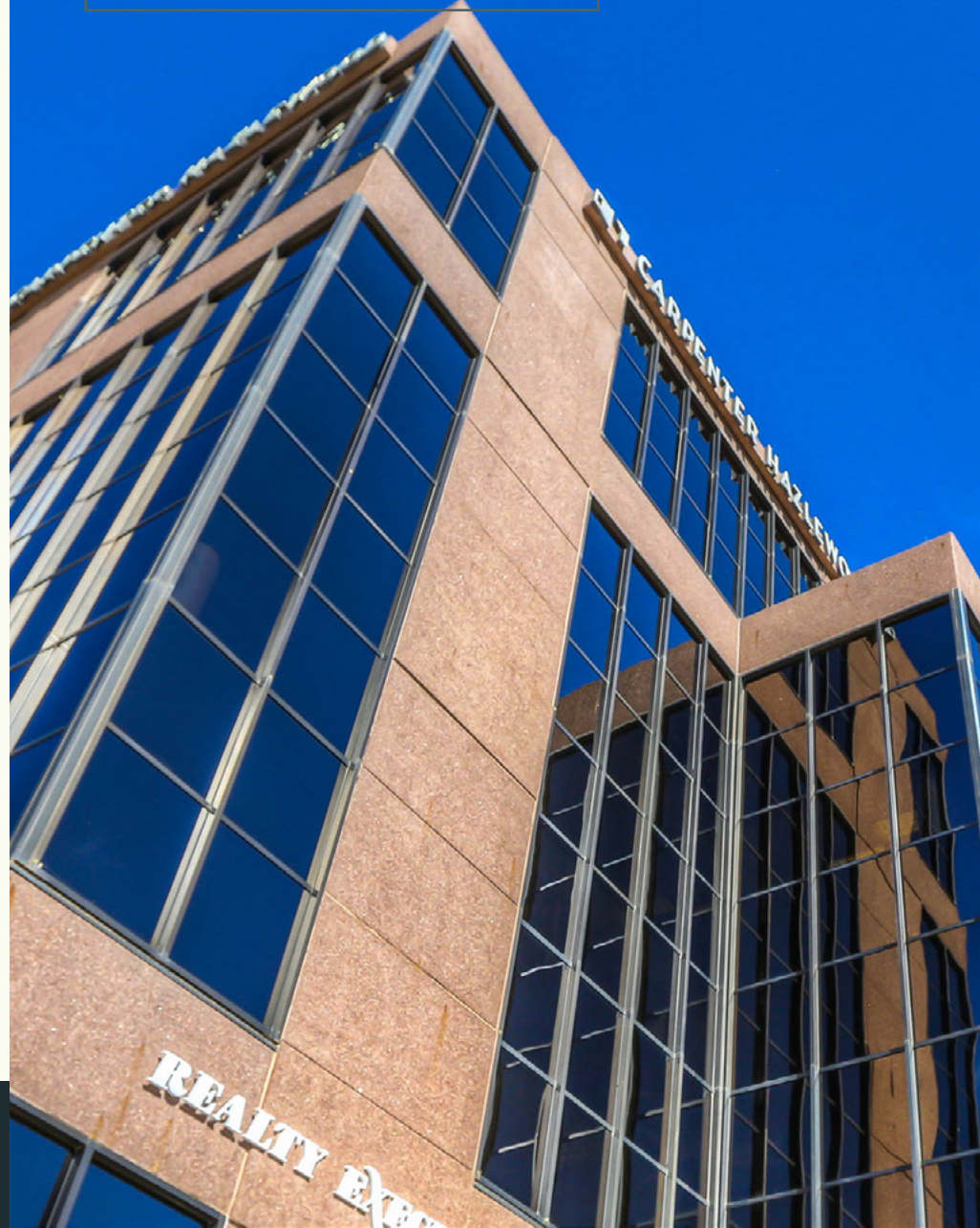
Parking ratio of 4.0/1,000 SF



Underground parking available



# ON-SITE AMENITIES



SPOKES RESTAURANT



NATIONAL BANK OF ARIZONA



SPIRIT OF YOGA



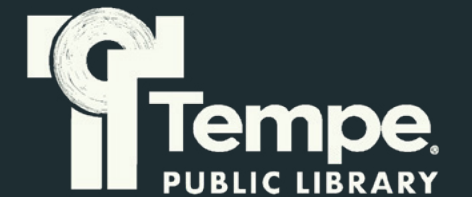
COMPLIMENTARY CONFERENCE ROOMS



MOBILE SECURITY



# NEARBY AMENITIES





# TEMPE

## CITY CENTER

1400 — 1470 EAST SOUTHERN AVENUE



© 2026 CBRE, Inc. All rights reserved. This information has been obtained from reliable sources but has not been verified for accuracy or completeness. CBRE, Inc. makes no guarantee, representation, or warranty and accepts no responsibility or liability for the accuracy, completeness, or reliability of the information contained herein. You should conduct a careful, independent investigation of the property and verify all information. Any reliance on this information is solely at your own risk. CBRE and the CBRE logo are service marks of CBRE, Inc. All other marks displayed on this document are the property of their respective owners, and the use of such marks does not imply any affiliation with or endorsement of CBRE. Photos herein are the property of their respective owners. Use of these images without the express written consent of the owner is prohibited.

### CONTACT US:

**JAMIE SWIRTZ**

+1 602 735 5630  
[jamie.swirtz@cbre.com](mailto:jamie.swirtz@cbre.com)

**JOE PEQUENO**

+1 602 510 0003  
[joe.pequeno@cbre.com](mailto:joe.pequeno@cbre.com)