

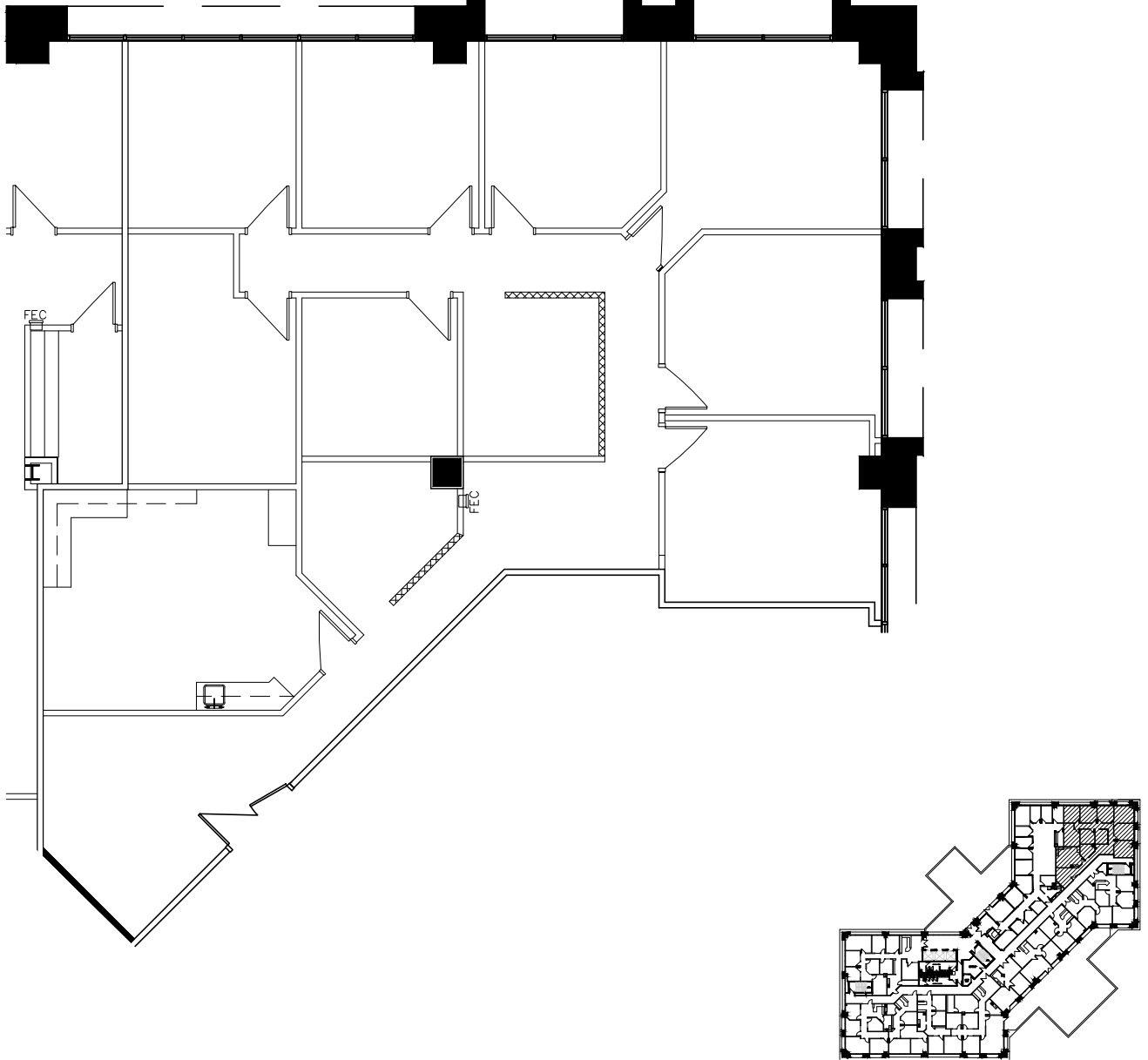


CONCORD
PLACE

Floor Plans

2999 NORTH 44TH STREET, PHOENIX, ARIZONA

SUITE 303: ±3,131 RSF



UPDATED AS OF 01/08/2026

TIM WHITTEMORE

tim.whittemore@cushwake.com
+1 602 229 5931

PATRICK SCHRIMSHER

patrick.schrimsher@cushwake.com
+1 602 468 8529



2555 E Camelback Rd, Ste 400, Phoenix, AZ 85016
Main: +1 602 954 9000 | Fax: +1 602 253 0528
cushmanwakefield.com

©2026 Cushman & Wakefield. All rights reserved. The information contained in this communication is strictly confidential. This information has been obtained from sources believed to be reliable but has not been verified. NO WARRANTY OR REPRESENTATION, EXPRESS OR IMPLIED, IS MADE AS TO THE CONDITION OF THE PROPERTY (OR PROPERTIES) REFERENCED HEREIN OR AS TO THE ACCURACY OR COMPLETENESS OF THE INFORMATION CONTAINED HEREIN, AND SAME IS SUBMITTED SUBJECT TO ERRORS, OMISSIONS, CHANGE OF PRICE, RENTAL OR OTHER CONDITIONS, WITHDRAWAL WITHOUT NOTICE, AND TO ANY SPECIAL LISTING CONDITIONS IMPOSED BY THE PROPERTY OWNER(S). ANY PROJECTIONS, OPINIONS OR ESTIMATES ARE SUBJECT TO UNCERTAINTY AND DO NOT SIGNIFY CURRENT OR FUTURE PROPERTY PERFORMANCE.