

# LANDMARK MMA BUILDING DOWNTOWN-OFFICE SPACE

LOCATED AT THE CORNER OF CAPITOL AVE. AND ST. JOSEPH ST.



## FOR SUBLEASE

620 S. Capitol Avenue,  
Lansing, MI

## AVAILABLE

Up to 1,450 SF

### ERIC F. ROSEKRANS, CCIM, CPM

Executive Vice President

Direct: 517 319-9209

[eric.rosekrans@martincommercial.com](mailto:eric.rosekrans@martincommercial.com)

### THOMAS JAMIESON, SIOR

Senior Vice President, Office Advisor

Direct: 517 319-9235

[thomas.jamieson@martincommercial.com](mailto:thomas.jamieson@martincommercial.com)



1111 Michigan Ave., Ste 300  
East Lansing, MI 48823  
[martincommercial.com](http://martincommercial.com)

# PROPERTY BROCHURE

MMA BUILDING, 620 S. Capitol Avenue, Lansing, MI



## Downtown Office Suite Conveniently Located Next to I-496

Located in the modern MMA Building, this 32,416 SF barrier-free property features a striking large atrium and a convenient shared conference room on the first floor. Suite 325 is nicely finished and includes expansive windows, a welcoming reception area, four private offices, a dedicated work room, and a spacious conference room.

Professionally managed, the building offers a rare amenity in downtown Lansing—a large, private, lighted parking lot with dual access from Hillsdale Street and Capitol Avenue. Its central location provides immediate access to I-496, less than a mile from the State Capitol and downtown amenities.

LEASE RATE:  
**\$22.00**

PSF/YR, Full Service

## PROPERTY INFORMATION



**AVAILABLE:**  
Suite 325: Up to  
1,450 SF (Lease  
expires 12/31/2026)



**SPACE:** Reception,  
4 Offices, Conference  
& Work Rooms



**AMENITIES:**  
Large Shared  
Meeting Room on  
Ground Floor



**PARKING:**  
Large Lighted  
Corner Lot



### CONVENIENT LOCATION:

Less than a Half Mile to State Capitol with Immediate Access to I-496

© 2025 MARTIN COMMERCIAL PROPERTIES, INC. ALL RIGHTS RESERVED. THIS INFORMATION HAS BEEN OBTAINED FROM SOURCES BELIEVED RELIABLE BUT HAS NOT BEEN VERIFIED FOR ACCURACY OR COMPLETENESS. YOU SHOULD CONDUCT A CAREFUL, INDEPENDENT INVESTIGATION OF THE PROPERTY AND VERIFY ALL INFORMATION. ANY RELIANCE ON THIS INFORMATION IS SOLELY AT YOUR OWN RISK. MARTIN COMMERCIAL PROPERTIES AND THE MARTIN LOGO ARE SERVICE MARKS OF MARTIN COMMERCIAL PROPERTIES, INC. ALL OTHER MARKS DISPLAYED ON THIS DOCUMENT ARE THE PROPERTY OF THEIR RESPECTIVE OWNERS. PHOTOS HEREIN ARE THE PROPERTY OF THEIR RESPECTIVE OWNERS. USE OF THESE IMAGES WITHOUT THE EXPRESS WRITTEN CONSENT OF THE OWNER IS PROHIBITED.

## AREA MAP

### AREA INFORMATION

Adjacent

to I-496

0.5 Miles

to State Capitol, Washington Square

2.5 Miles

to US-127

2.2 Miles

to U.S. 127

3.7 Miles

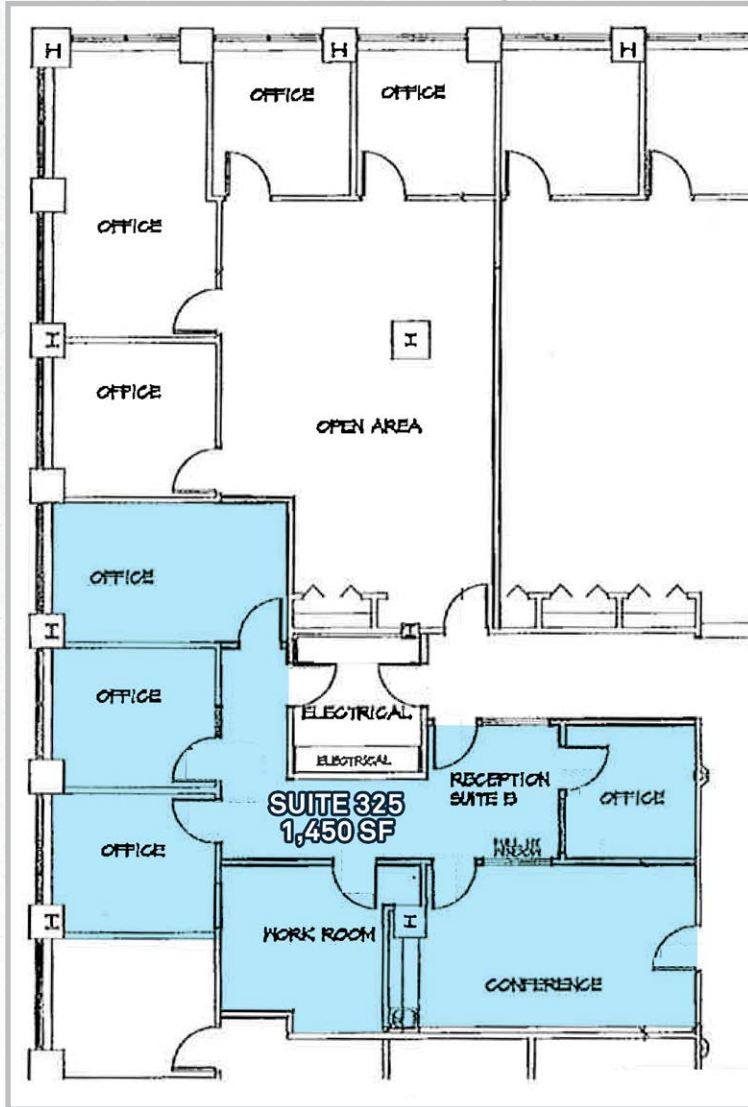
to Michigan State University

Convenient

to Metro Place, Porter and City View Apartments and Downtown Amenities



FLOOR PLAN



SUITE 325

LOCAL AERIAL VIEW

