



Available for Lease
Office/Warehouse Space on I-35

8242 Marshall Drive

Lenexa, Kansas

Property Features

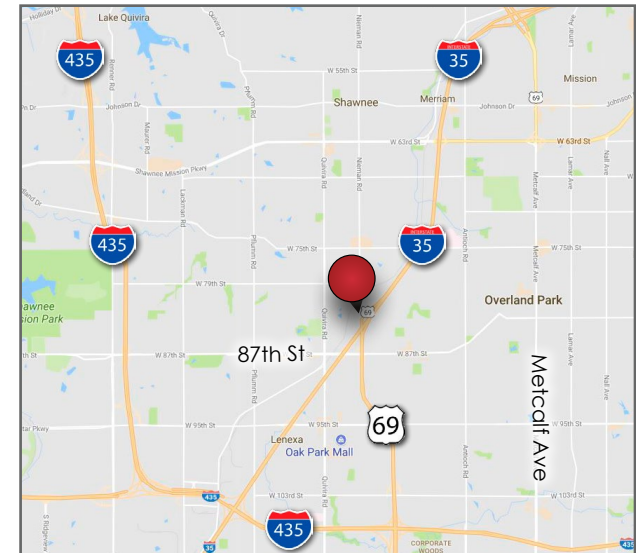
- ±2,104 SF available
- One (1) drive-in loading door
- Brookhollow Business Park
- Immediate access to I-35 and 87th Street
- Excellent visibility from Marshall Drive
- Lease Rate: \$2,280.00 per month Gross plus CAM

For more information:

Nathan Anderson, SIOR, CCIM

+1 913 890 2001

nathan@nai-heartland.com



NO WARRANTY OR REPRESENTATION, EXPRESS OR IMPLIED, IS MADE AS TO THE ACCURACY OF THE INFORMATION CONTAINED HEREIN, AND THE SAME IS SUBMITTED SUBJECT TO ERRORS, OMISSIONS, CHANGE OF PRICE, RENTAL OR OTHER CONDITIONS, PRIOR SALE, LEASE OR FINANCING, OR WITHDRAWAL WITHOUT NOTICE, AND OF ANY SPECIAL LISTING CONDITIONS IMPOSED BY OUR PRINCIPALS NO WARRANTIES OR REPRESENTATIONS ARE MADE AS TO THE CONDITION OF THE PROPERTY OR ANY HAZARDS CONTAINED THEREIN ARE ANY TO BE IMPLIED.

4400 College Boulevard Suite 170
Overland Park, Kansas 66211
913 362 1000

nai-heartland.com

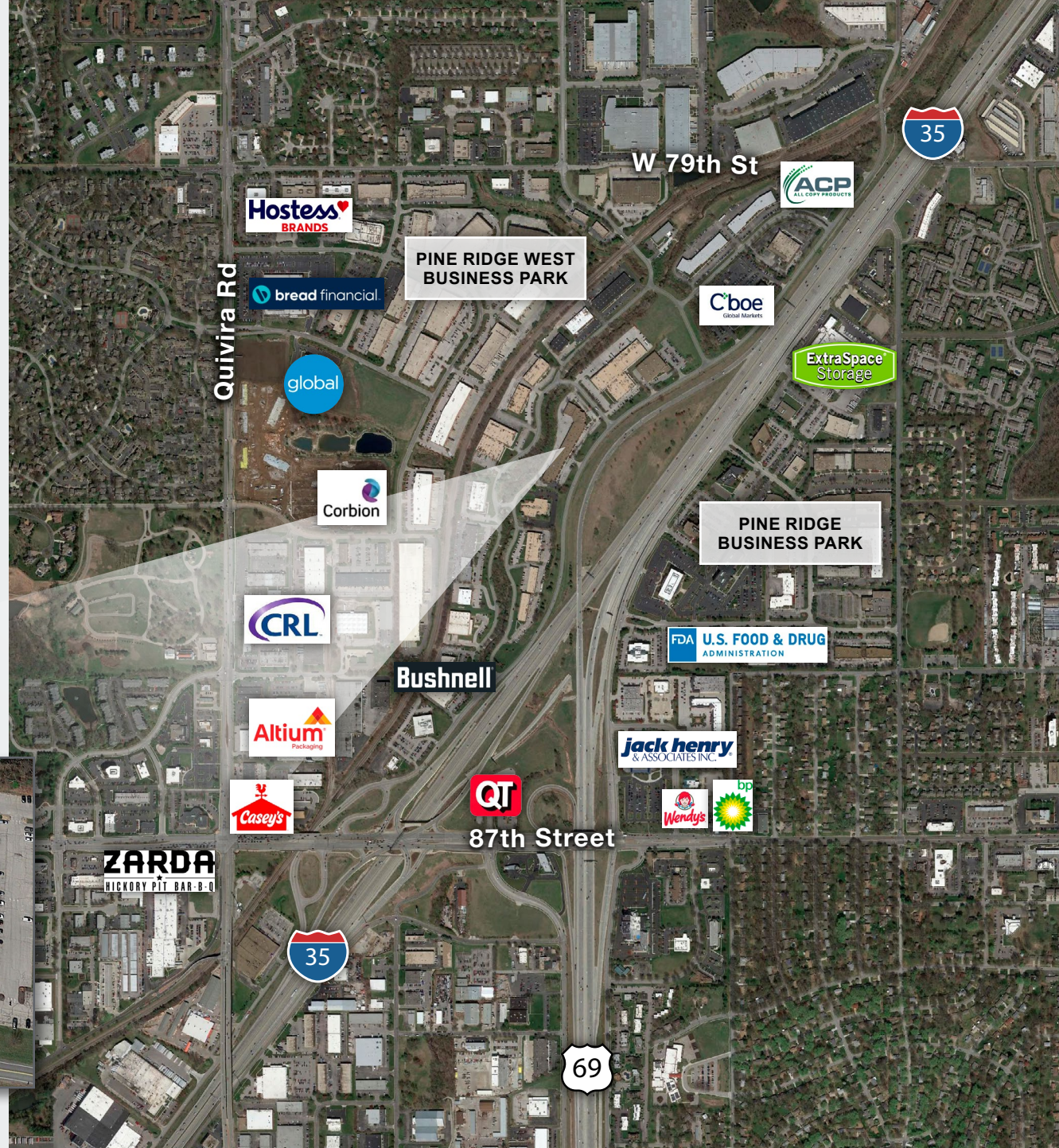
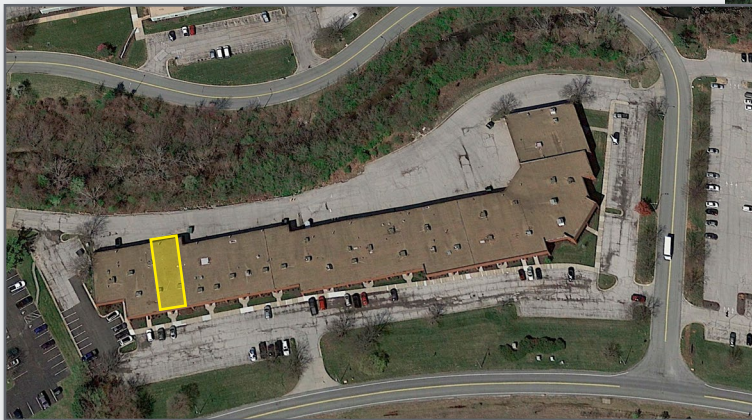
Available for Lease

Office/Warehouse Space

8242 Marshall Dr, Lenexa, KS

Location Advantages

- Excellent access and location in the highly-desirable Johnson County submarket
- 7 minutes from 119th and I-35 in Olathe
- 14 minutes from Southwest Blvd and I-35 in downtown Kansas City
- 12 minutes from I-435 and State Line in Leawood



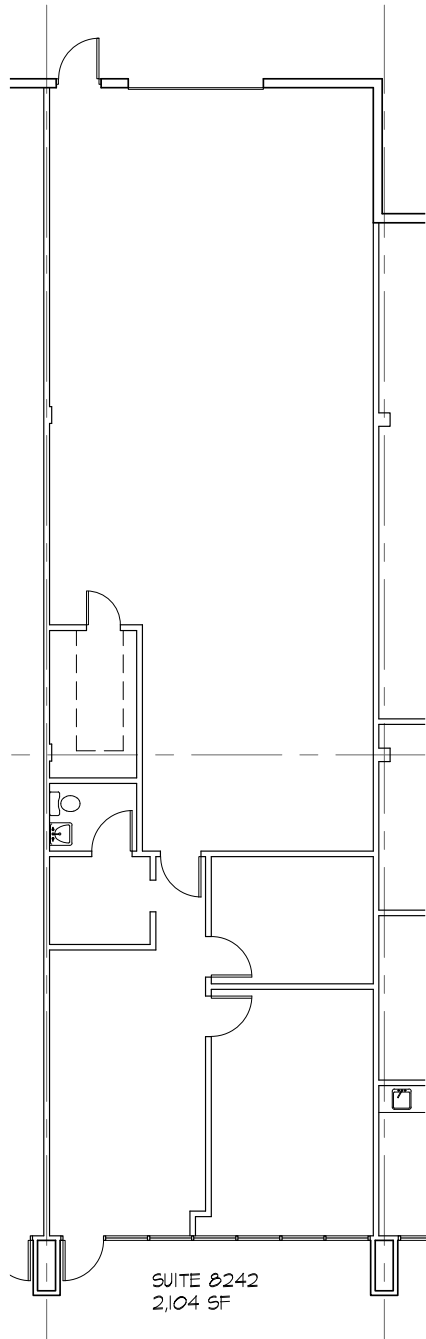
4400 College Boulevard Suite 170
Overland Park, Kansas 66211
913 362 1000
nai-heartland.com

Nathan Anderson, SIOR, CCIM
+1 913 890 2001
nathan@nai-heartland.com

Available for Lease

Office/Warehouse Space

8242 Marshall Dr, Lenexa, KS



4400 College Boulevard Suite 170
Overland Park, Kansas 66211
913 362 1000
nai-heartland.com

Nathan Anderson, SIOR, CCIM
+1 913 890 2001
nathan@nai-heartland.com