



WASHINGTON ST. PARTNERS

NOW AVAILABLE: **MERCHANTS COMMONS**

220 S. WARREN ST., SYRACUSE, NY

5,000+- SF OFFICE AVAILABLE

PENTHOUSE LEVEL OFFICE SETTING WITH ROOFTOP DECK,
PRIVATE ELEVATOR LOBBY



Property Features:

- 1. Unique office space with PRIME LOCATION
- 2. Multiple Amenities Available
- 3. Part of Merchants Commons Complex
- 4. Access to an improved fitness/spa experience
- 5. Rooftop Deck and Outdoor Experience
- 6. Glass Front Offices

Location Description:

Merchants Commons mixed use complex consisting of commercial office space and residential apartments, located in the heart of Downtown Syracuse.

Current Complex Tenants:



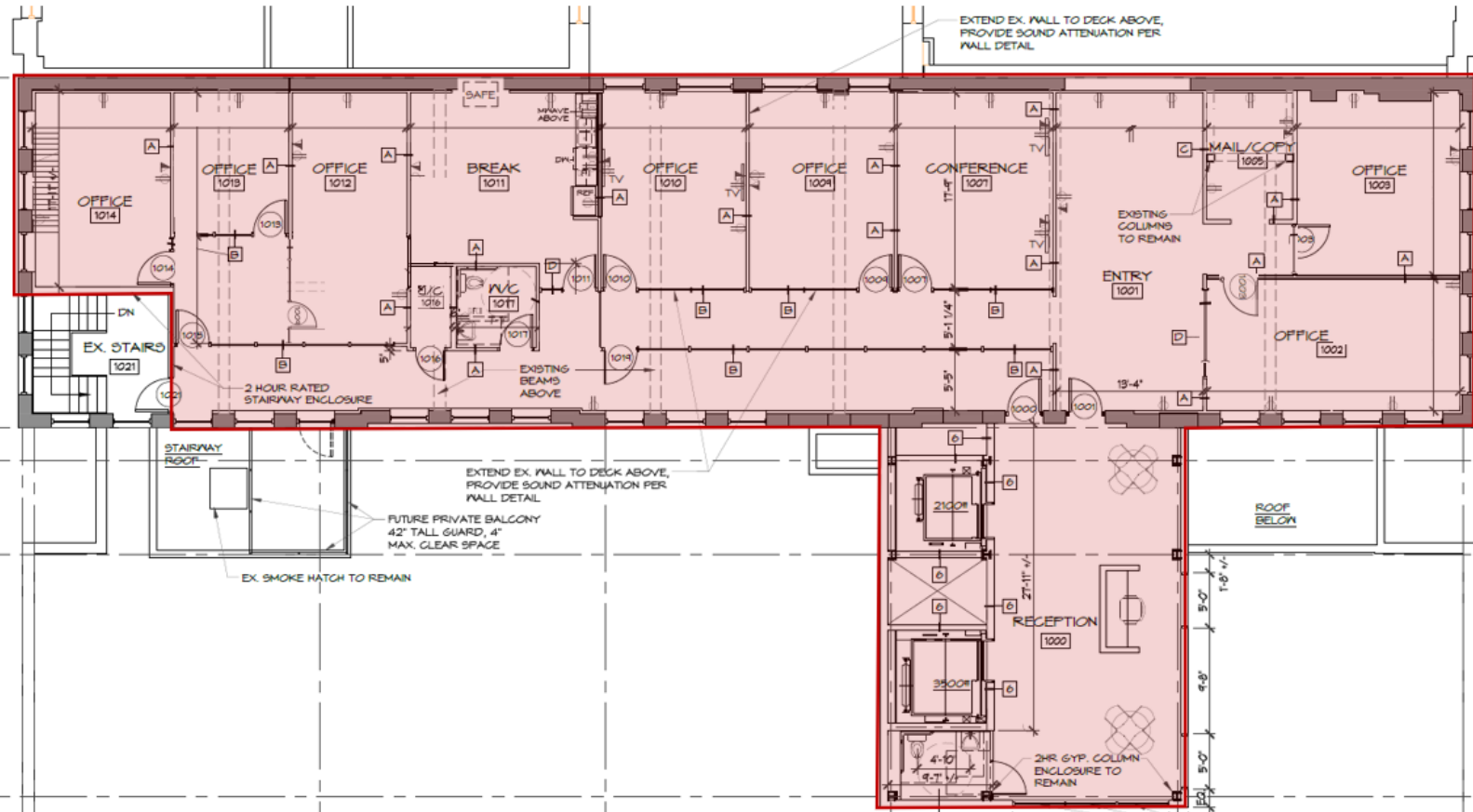
FOR OTHER LEASING OPPORTUNITIES
WashingtonStPartners.com



WASHINGTON ST. PARTNERS CORPORATE OFFICES
120 E. Washington Street, Syracuse, NY 13202
PH 315-426-2624 info@washingtonstpartners.com

NOW AVAILABLE: 5,000+- SF OFFICE

MERCHANTS COMMONS



FOR OTHER LEASING OPPORTUNITIES
WashingtonStPartners.com



WASHINGTON ST. PARTNERS CORPORATE OFFICES
120 E. Washington Street, Syracuse, NY 13202
PH 315-426-2624 info@washingtonstpartners.com

NOW AVAILABLE: 5,000+- SF OFFICE

MERCHANTS COMMONS



FOR OTHER LEASING OPPORTUNITIES
WashingtonStPartners.com



WASHINGTON ST. PARTNERS CORPORATE OFFICES
120 E. Washington Street, Syracuse, NY 13202
PH 315-426-2624 info@washingtonstpartners.com