

MARINER'S MILE

NEWPORT BEACH



NOW LEASING

W Coast Hwy Offices

LEASED BY:

RW REDWOOD WEST

WELCOME TO

MARINER'S MILE

Located in the heart of Mariner's Mile, this very rare waterfront address features newly renovated creative office spaces with exceptional views of Newport Bay. This high identity location offers prominent eyebrow signage on Pacific Coast Highway, and is close to all the area amenities that Newport Beach has to offer. The property has free surface and covered parking, with reserved spaces also available.





BILLY'S AT THE BEACH



The Features & Amenities



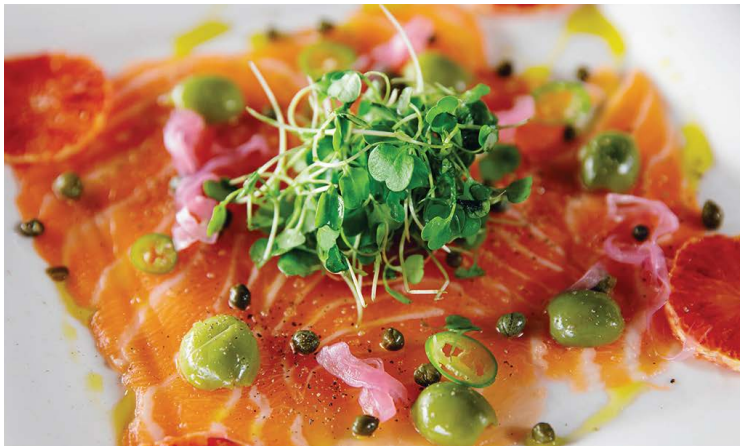
FEATURED LOCATION

Billy's at the Beach has been serving the freshest Hawaiian - inspired cuisine on the picturesque Newport Bay for over two decades. Enjoy fresh seafood, classic steaks, island-inspired favorites, world famous Mai Tais and endless waterfront views.

- High Identity location in the heart of Newport Beach's Mariner's Mile
- Newly renovated bay front creative office space with exceptional views
- Outdoor patios and eating areas overlooking Newport Bay
- Free surface and covered parking, reserved spaces available
- Close to numerous restaurants and other local amenities



BILLY'S AT THE BEACH



TAVERN HOUSE KITCHEN + BAR

NEIGHBORHOOD HOT SPOTS



C'EST SI BON BAKERY



LIDO MARINA VILLAGE



LOUIE'S BY THE BAY

AREA OVERVIEW

MARINER'S MILE

W COAST HWY 101 LICHES

FASHION ISLAND

BACK BAY

BALBOA ISLAND

LIDO ISLAND

MARINER'S MILE

BILLY'S AT THE BEACH

LIDO MARINA VILLAGE

LIDO VILLAS

LIDO HOUSE HOTEL

W COAST HWY 101 LICHES

W COAST HWY 101 LICHES





2429 WCH

2431 WCH

2505 WCH

2507 WCH

SUITE 208
1,379 SF

SUITE 210
1,351 SF

SUITE 205
1,913 SF

SUITE 101
1,127 SF

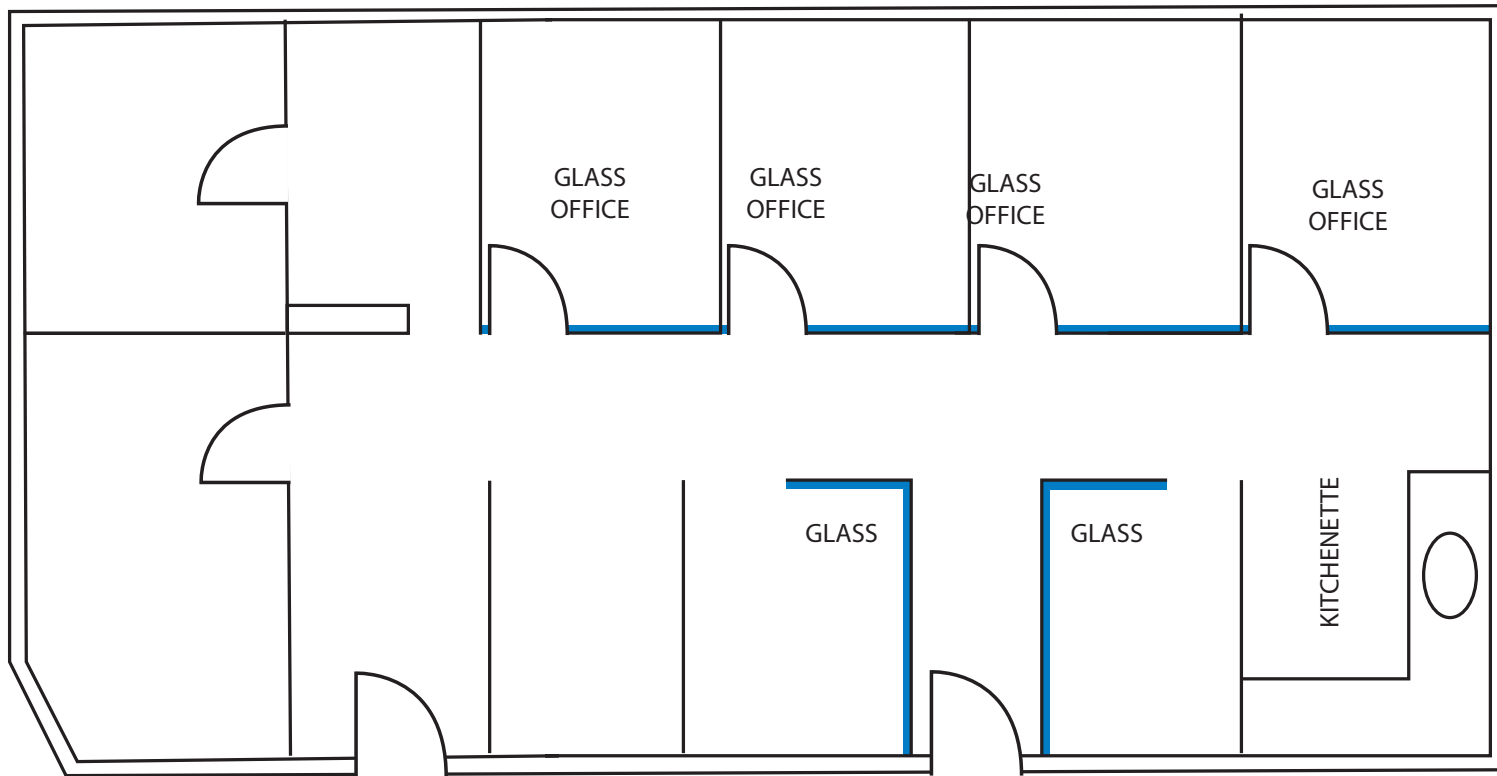
SUITE 200
1,500 SF

SUITE 202
1,626 SF

SUITE 101
735 SF

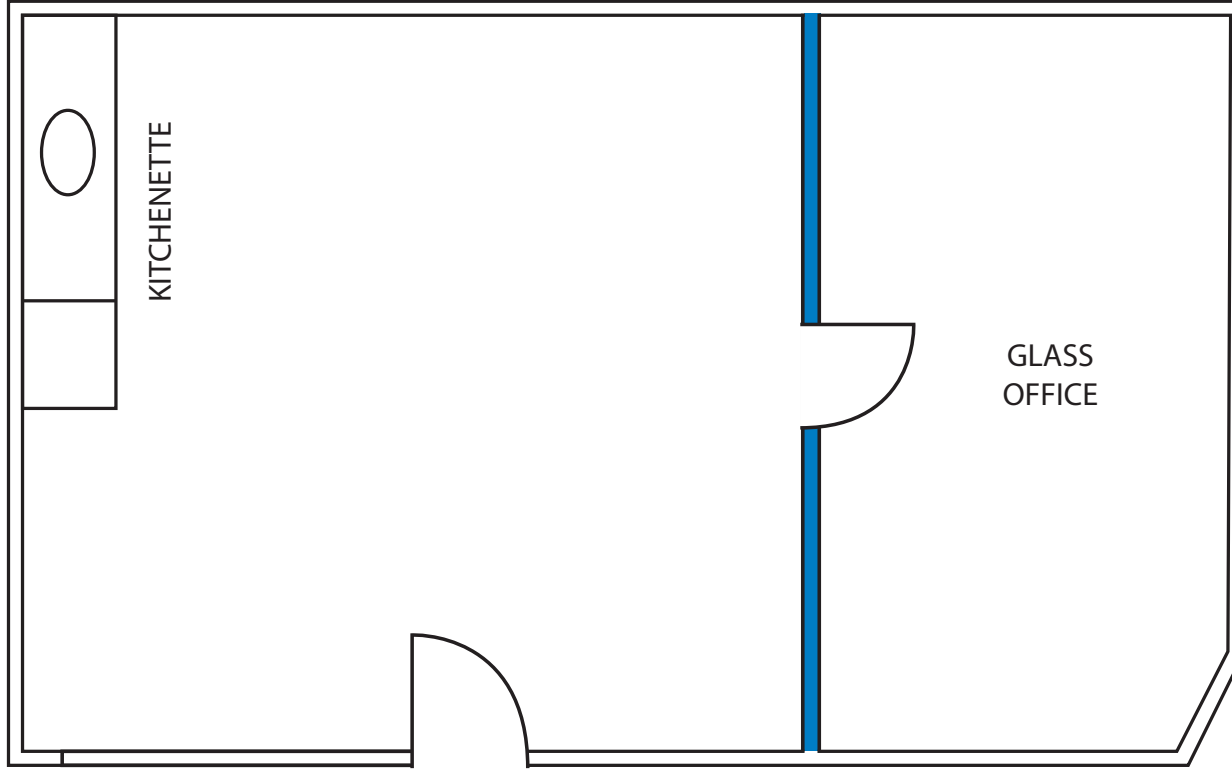
2429 WCH, Suite 205

+/- 1,913 SF



2429 WCH, Suite 208

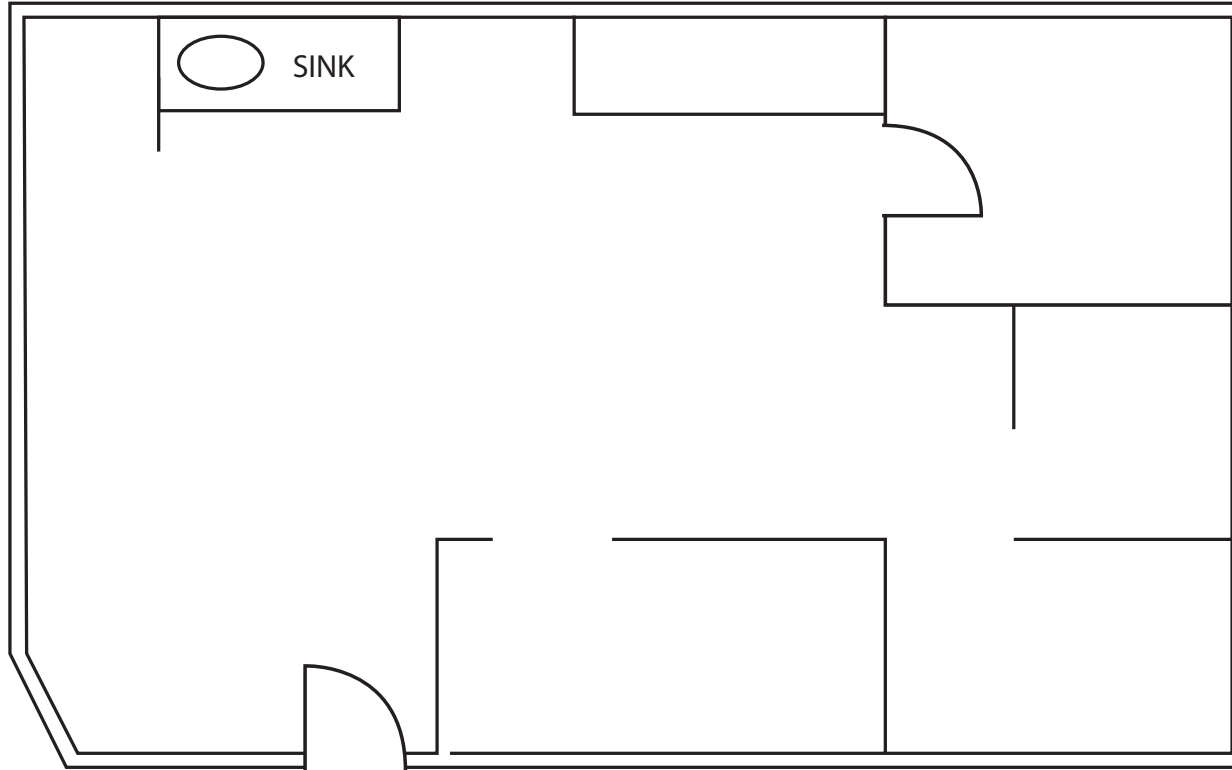
+/- 1,379 SF



NEWPORT HARBOR VIEWS

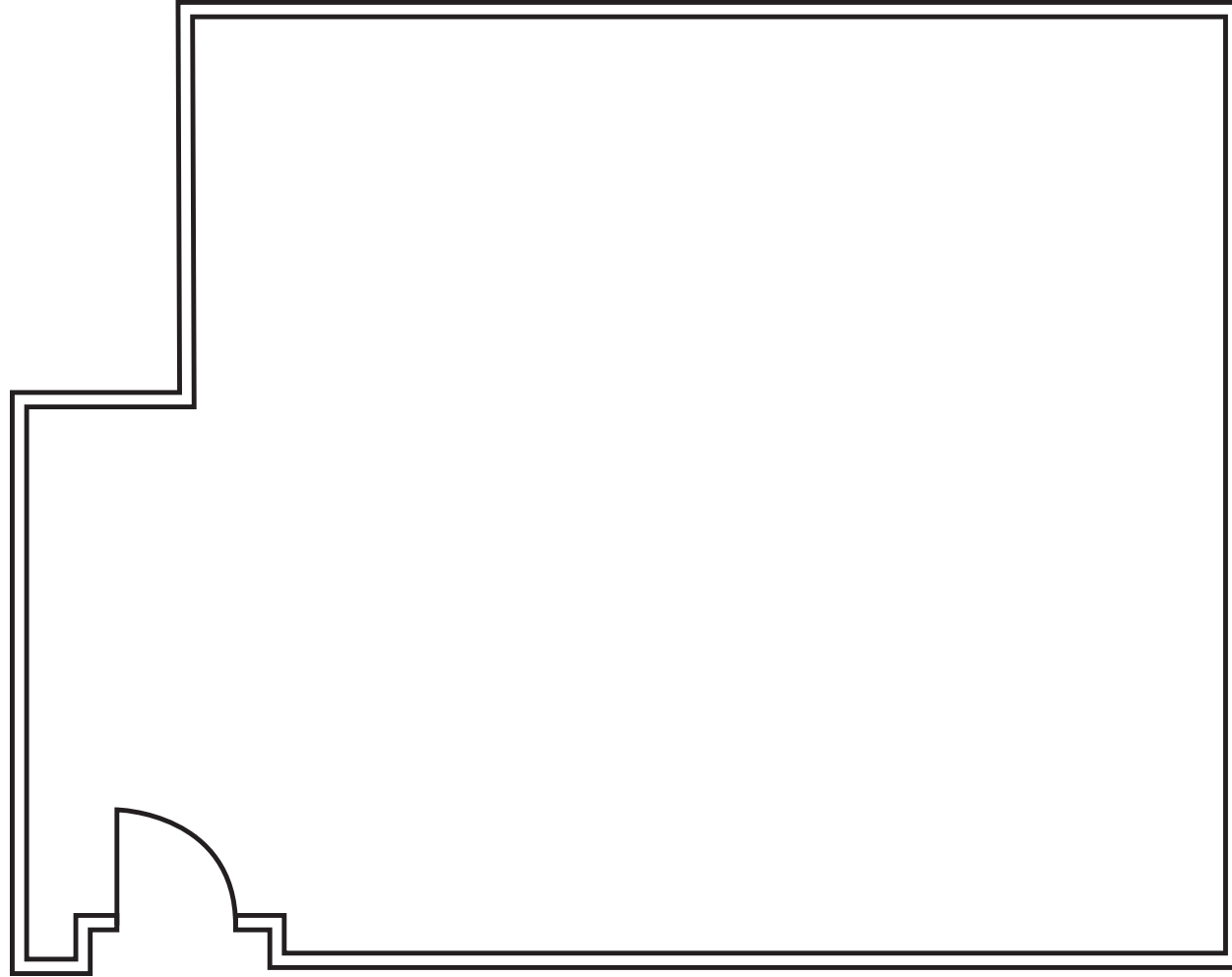
2429 WCH, Suite 210

+/- 1,351 SF



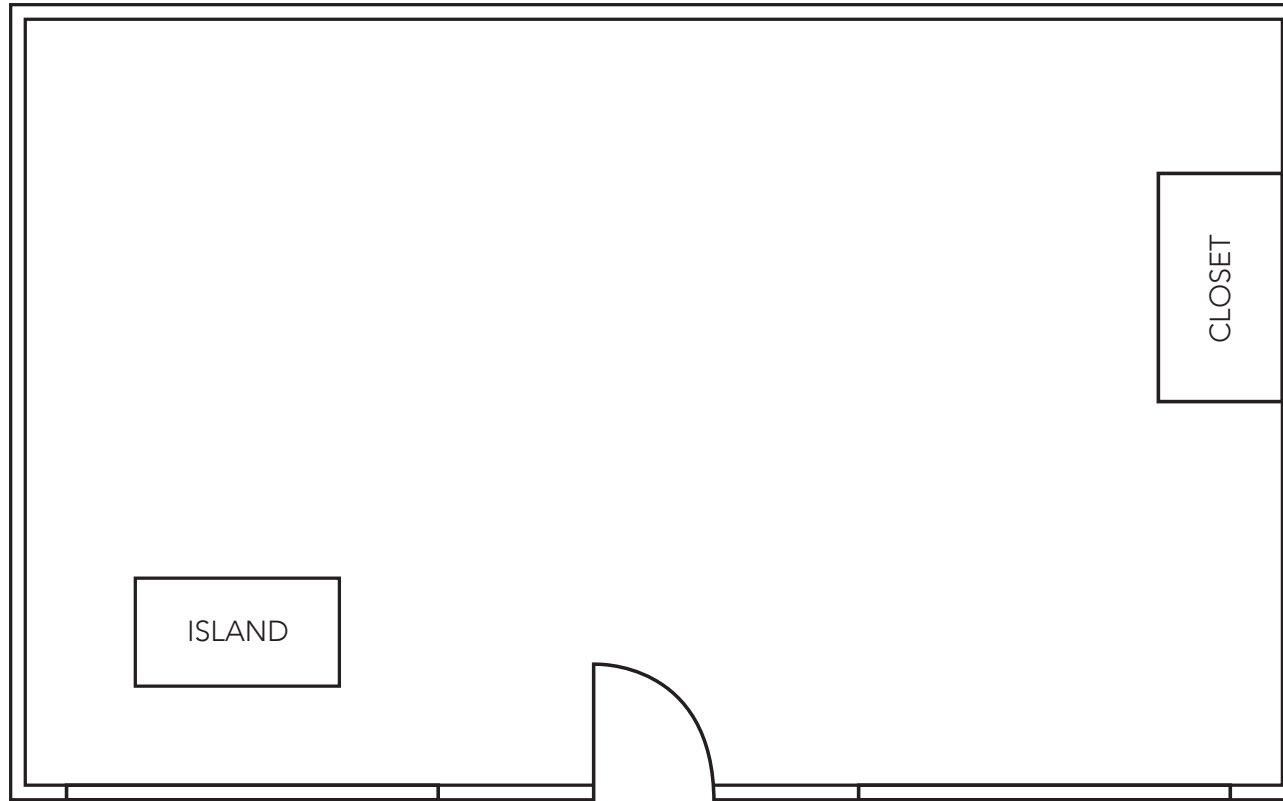
2431 WCH, Suite 101

+/- 1,127 SF



2505 WCH, Suite 200

+/- 1,500 SF




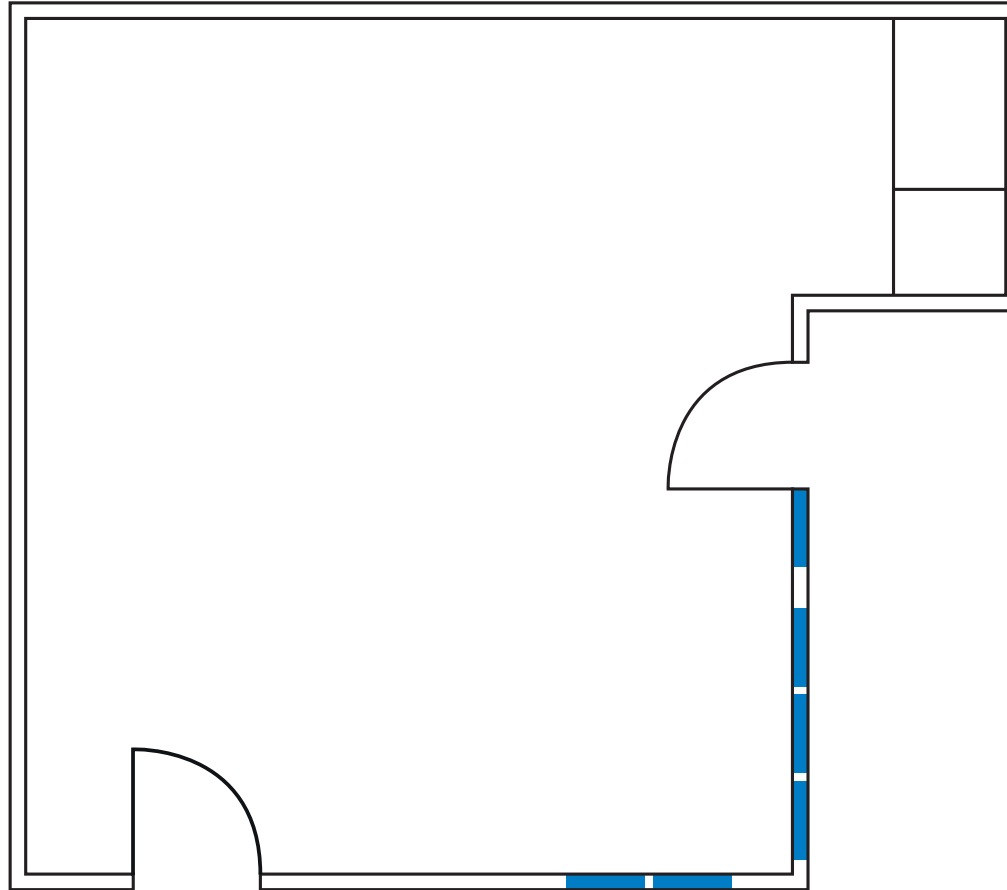
NEWPORT HARBOR

2507 WCH, Suite 101

+/- 735 SF

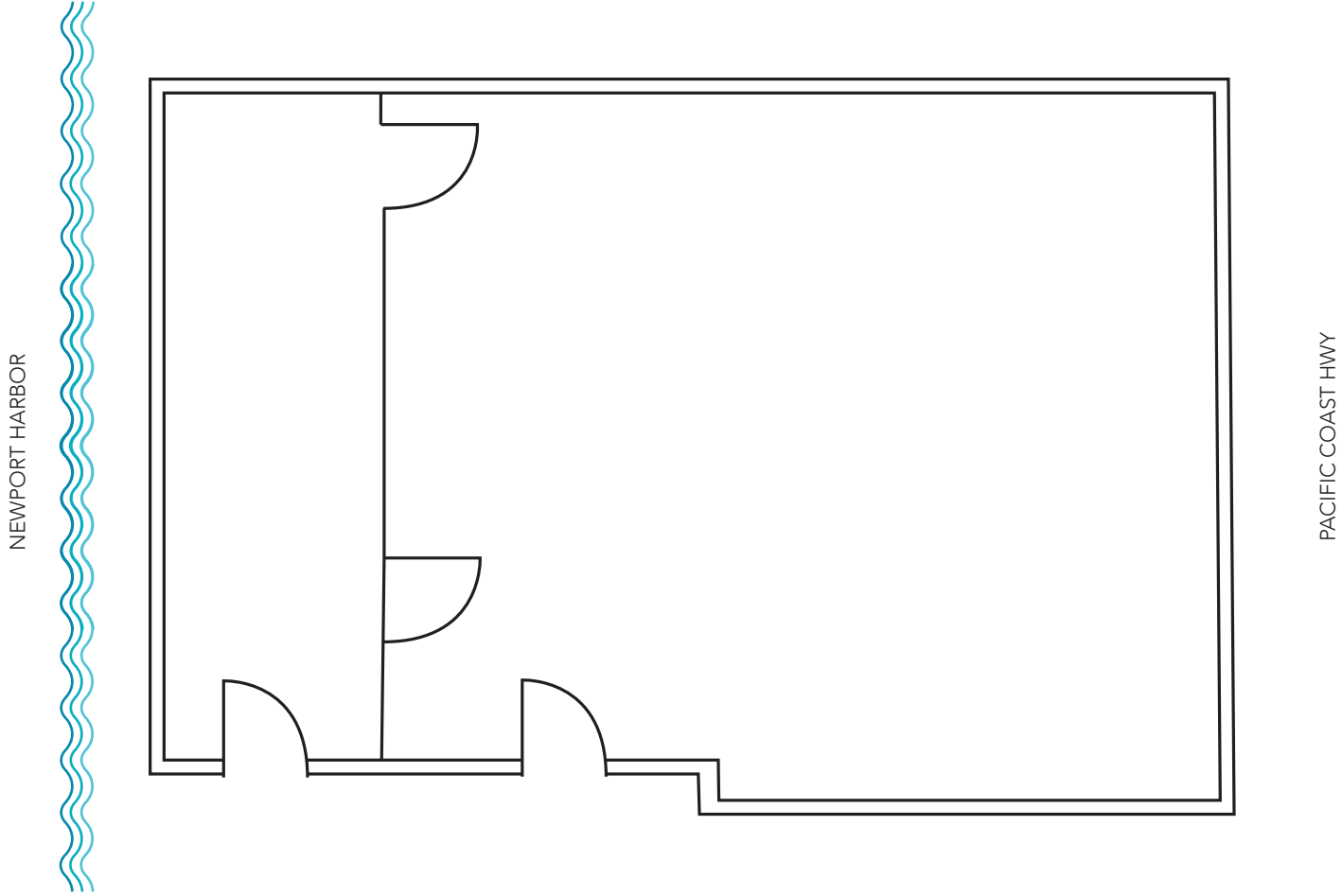
AVAILABLE NOW

 = WINDOWS



2507 WCH, Suite 202

+/- 1,626 SF





MARINER'S MILE

NEWPORT BEACH

For more information, please contact:

John Pomer

949.945.2649

john@redwoodwest.com

Lic. #01440689

Ben Gott

949.945.2648

ben@redwoodwest.com

Lic. #01724507

Christian Heffelman

949.945.2645

christian@redwoodwest.com

Lic. #02101426

Julie Johnson

949.945.2644

julie@redwoodwest.com

Lic. #02156626



LEASED BY:

RW | REDWOOD
WEST

The information contained in this document has been obtained from sources believed reliable. While Redwood West does not doubt its accuracy, Redwood West has not verified it and makes no guarantee, warranty or representation about it. It is your responsibility to independently confirm its accuracy and completeness. You and your advisors should conduct a careful, independent investigation of the property to determine your satisfaction to the suitability of the property for your needs.