

FREEMAN PROFESSIONAL BUILDING

301 N. PRAIRIE AVENUE - INGLEWOOD, CA 90301

84,957 RSF



**MEDICAL ASSET
MANAGEMENT**
MEDICAL PROPERTY SPECIALISTS



Aaron Boss

(310) 517-4864

AaronB@Medicalasset.com

DRE #01381686

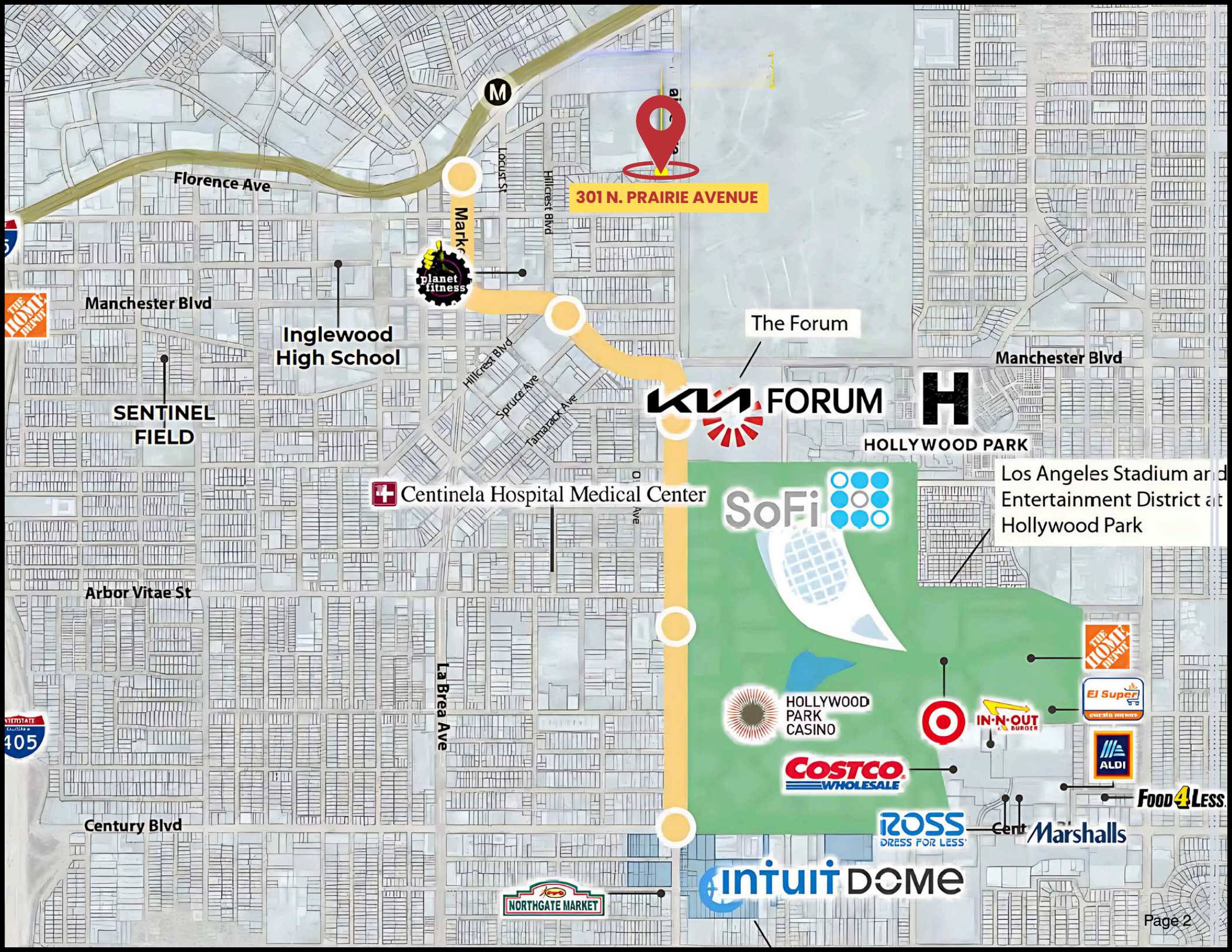


Mitch Yankowitz

(310) 517-4861

MitchY@Medicalasset.com

DRE #01360137



301 N. PRAIRIE AVENUE



The Forum



HOLLYWOOD PARK

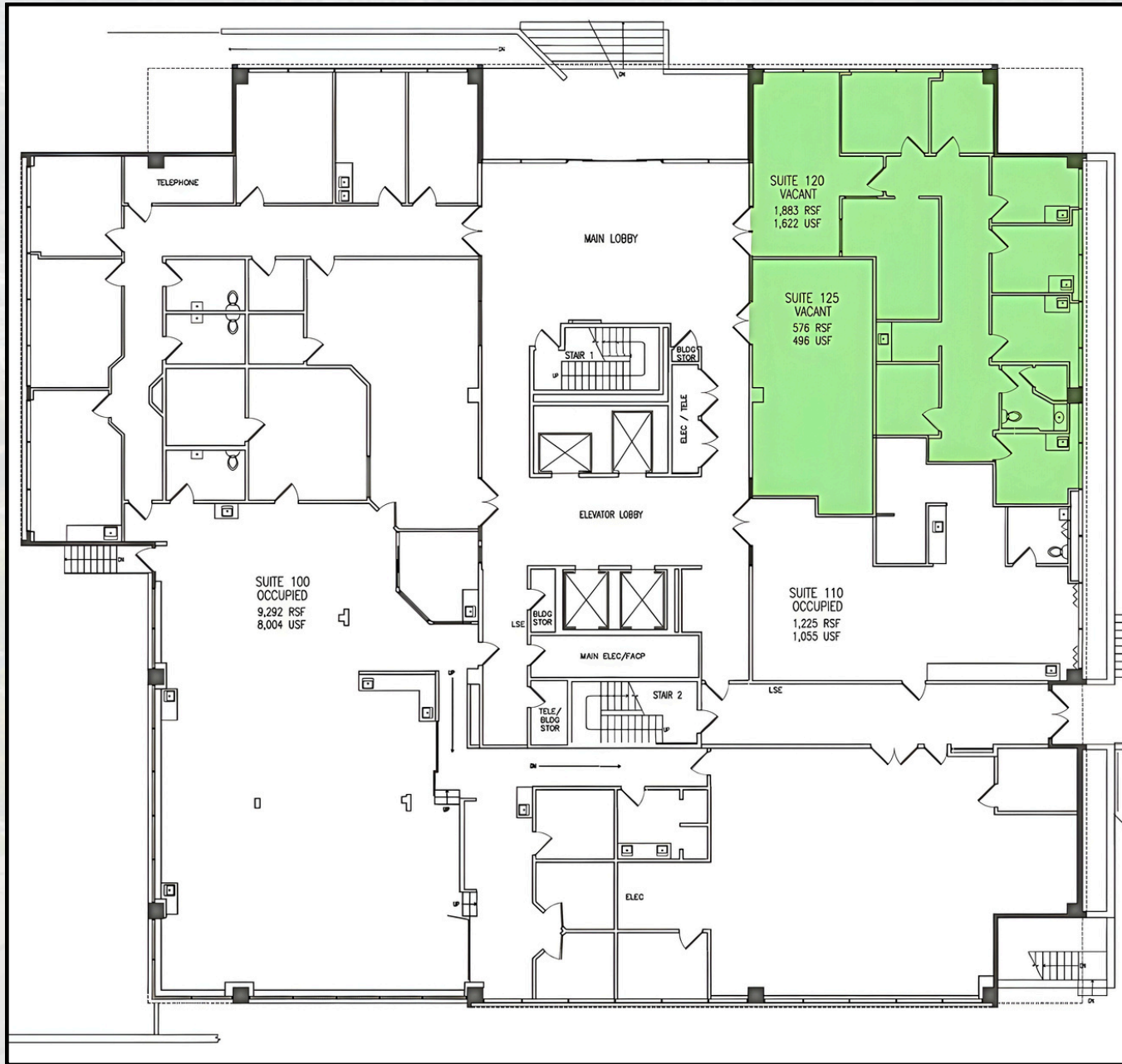
Centinela Hospital Medical Center



Los Angeles Stadium and Entertainment District at Hollywood Park



301 N. Prairie 1st Floor Plan



Suite 120

Rental SF: 1,883 RSF
Rental Rates: \$2.75/SF FSG

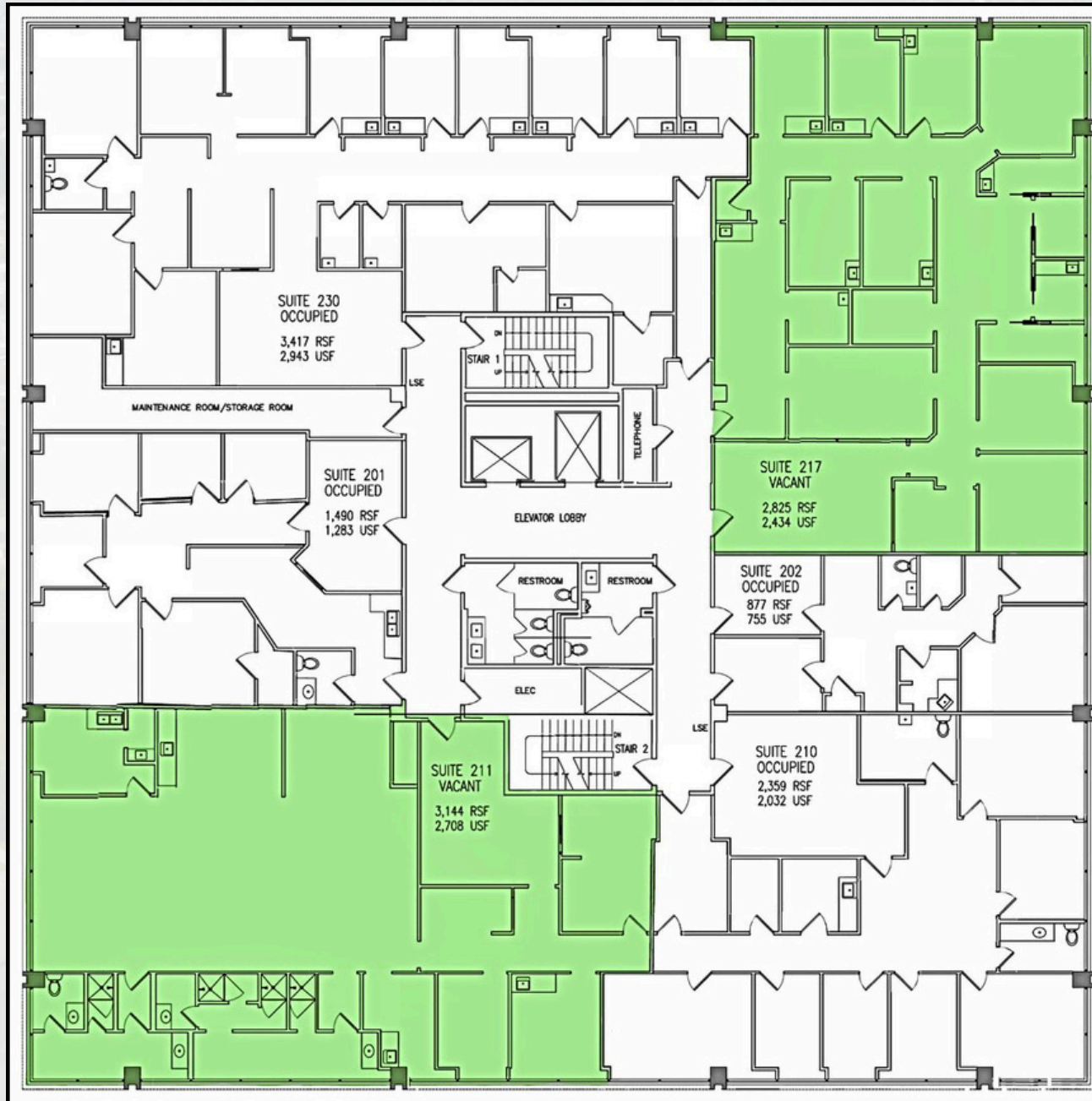
Suite 125

Rental SF: 576 RSF
Rental Rates: \$2.75/SF FSG

Contiguous Space

Rental SF: 2,459 RSF
Rental Rates: \$2.75/SF FSG

301 N. Prairie 2nd Floor Plan



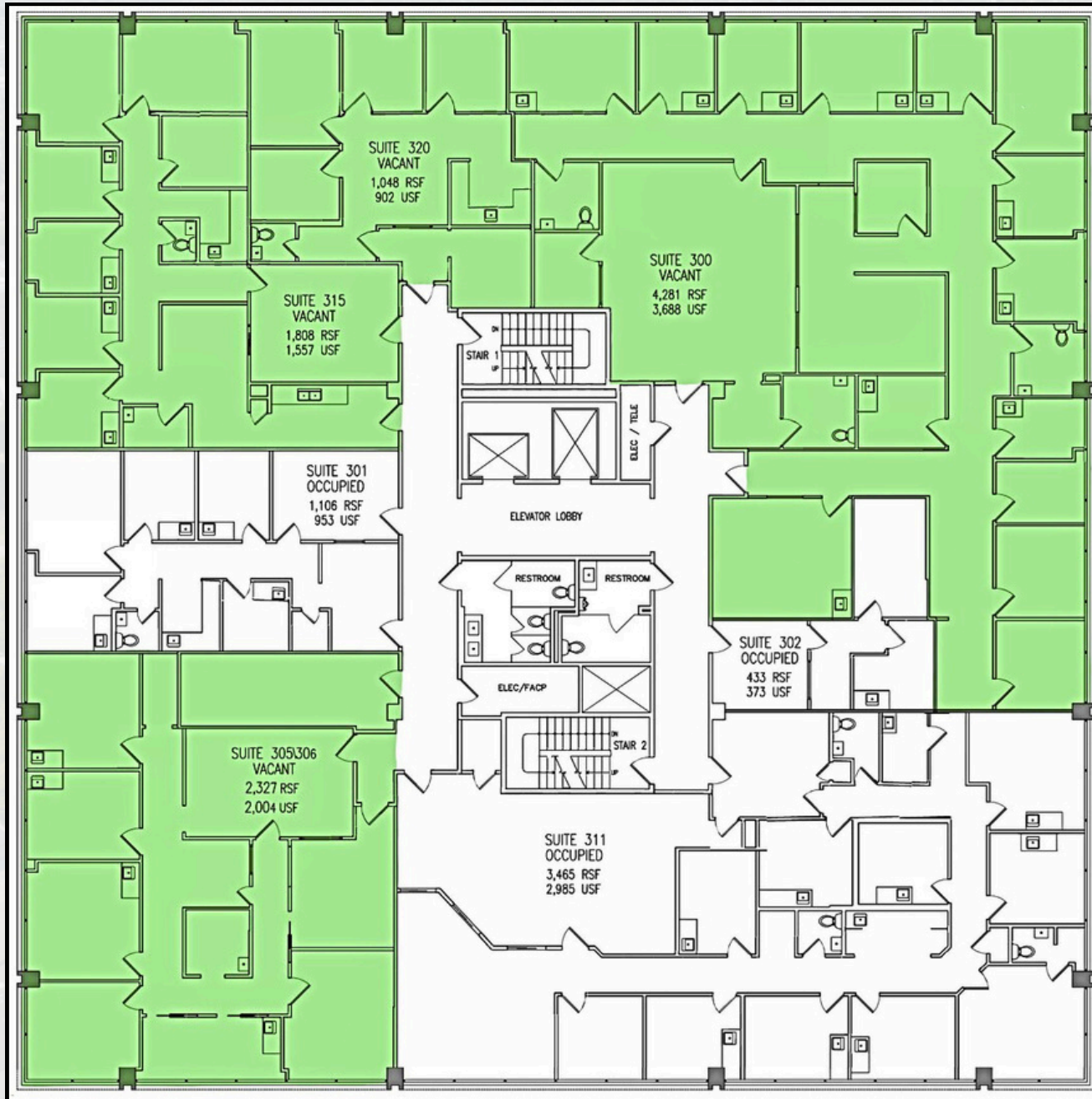
Suite 211

Rental SF: 3,144 RSF
Rental Rates: \$2.75/SF FSG

Suite 217

Rental SF: 2,825 RSF
Rental Rates: \$2.75/SF FSG

301 N. Prairie 3rd Floor Plan



* Suite 300

Rental SF: 4,281 RSF
Rental Rates: \$2.75/SF FSG

Suite 305\306

Rental SF: 2,327 RSF
Rental Rates: \$2.75/SF FSG

* Suite 315

Rental SF: 1,808 RSF
Rental Rates: \$2.75/SF FSG

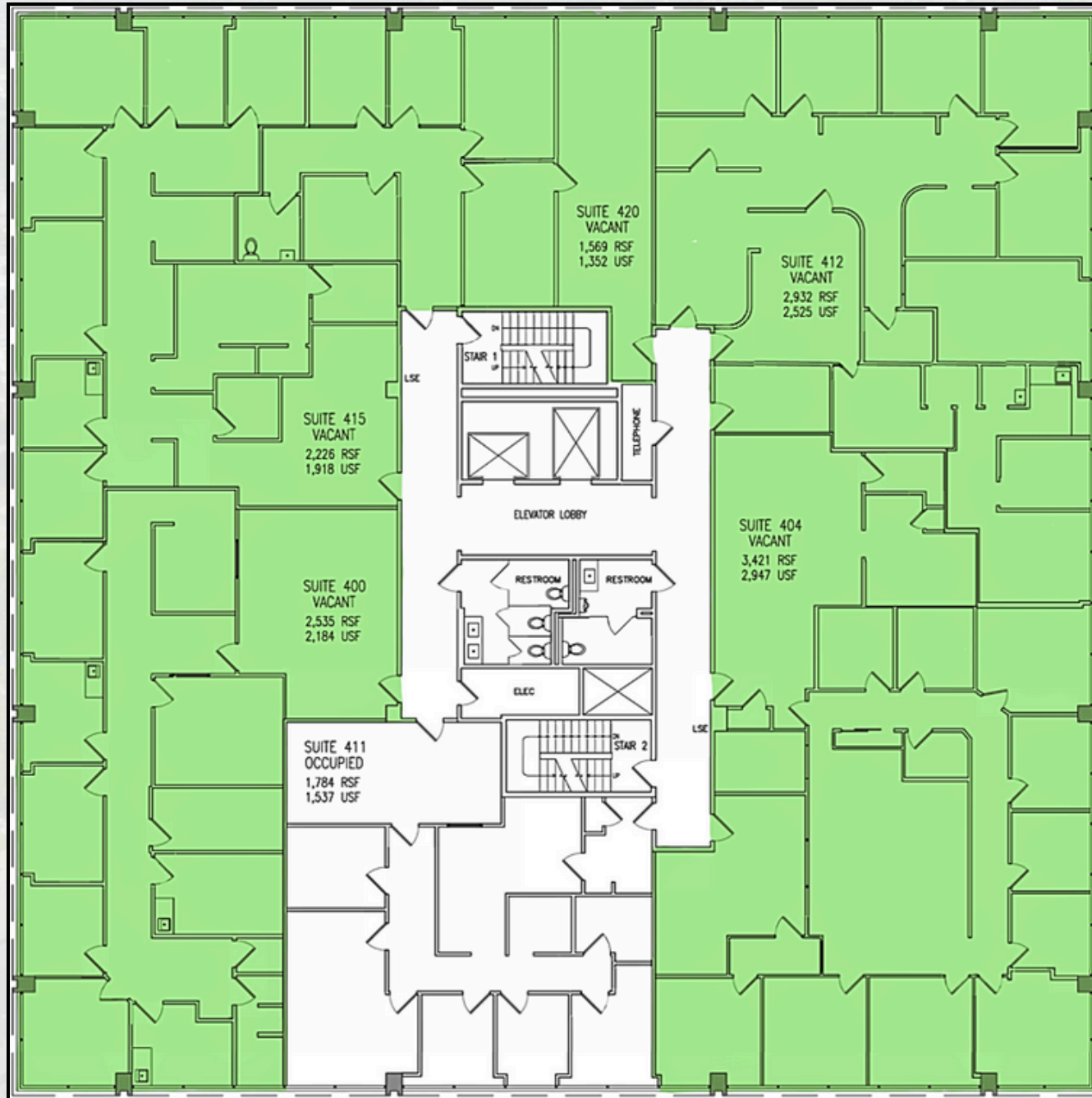
* Suite 320

Rental SF: 1,048 RSF
Rental Rates: \$2.75/SF FSG

* Contiguous Space

Rental SF: 7,137 RSF
Rental Rates: \$2.75/SF FSG

301 N. Prairie 4th Floor Plan



Suite 404

Rental SF: 3,421 RSF
Rental Rates: \$2.75/SF FSG

Suite 412

Rental SF: 2,932 RSF
Rental Rates: \$2.75/SF FSG

Suite 415

Rental SF: 2,226 RSF
Rental Rates: \$2.75/SF FSG

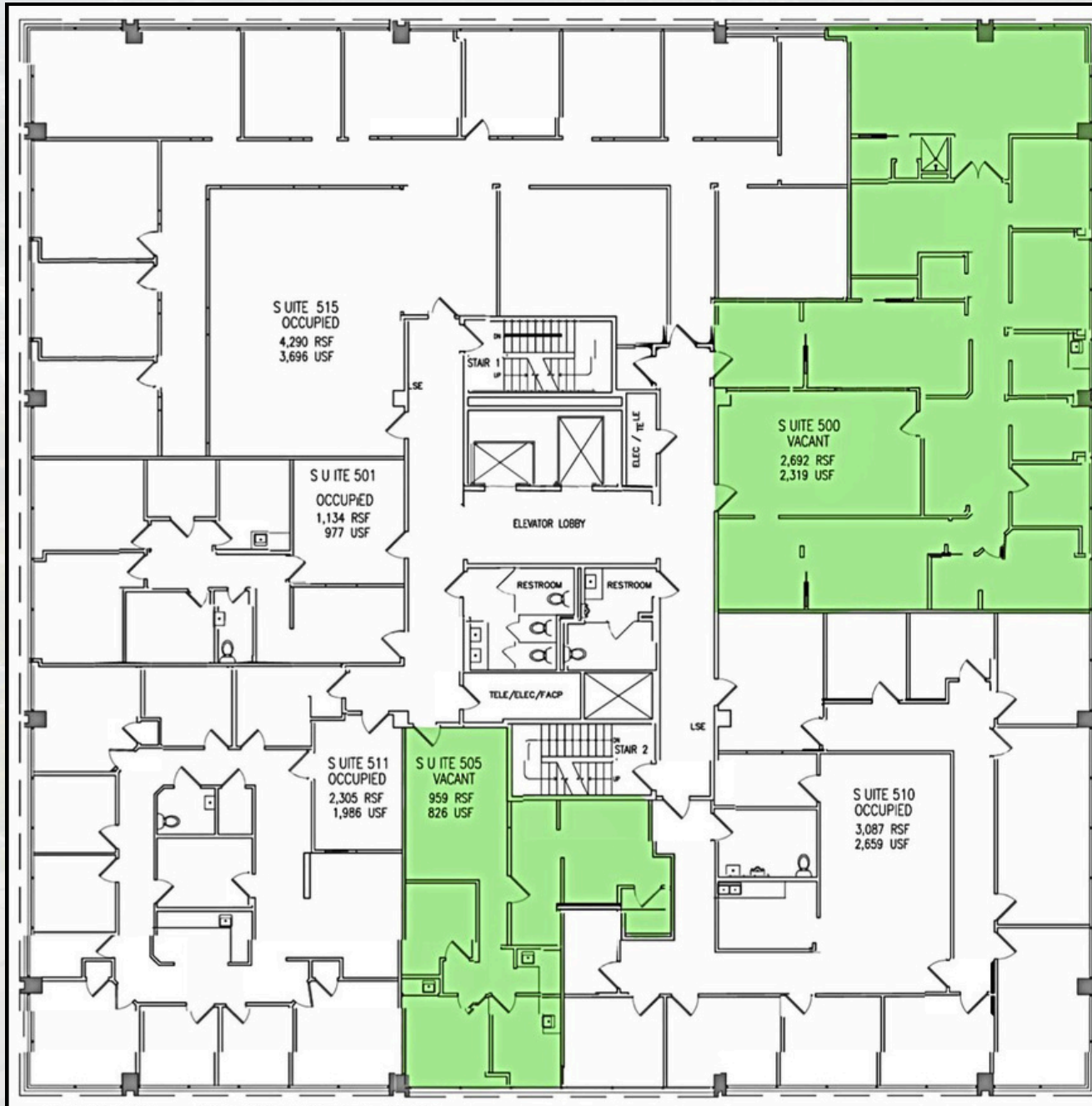
Suite 420

Rental SF: 1,569 RSF
Rental Rates: \$2.75/SF FSG

Contiguous Space

Rental SF: 10,148 RSF
Rental Rates: \$2.75/SF FSG

301 N. Prairie 5th Floor Plan



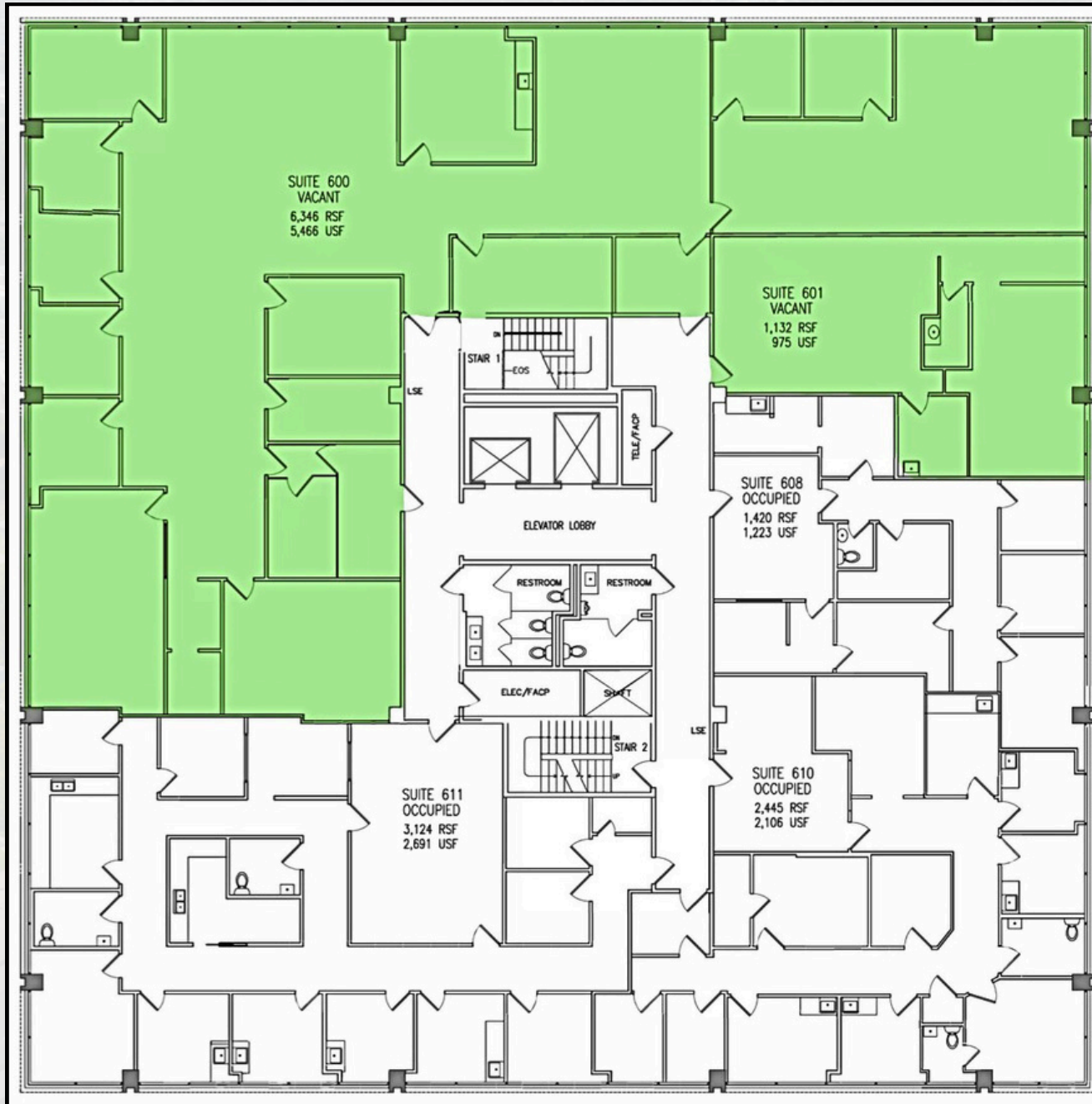
Suite 500

Rental SF: 2,692 RSF
Rental Rates: \$2.75/SF FSG

Suite 505

Rental SF: 959 RSF
Rental Rates: \$2.75/SF FSG

301 N. Prairie 6th Floor Plan



Suite 600

Rental SF: 6,346 RSF
Rental Rates: \$2.75/SF FSG

Suite 601

Rental SF: 1,132 RSF
Rental Rates: \$2.75/SF FSG

Contiguous Space

Rental SF: 7,478 RSF
Rental Rates: \$2.75/SF FSG

FREEMAN PROFESSIONAL BUILDING

301 N. PRAIRIE AVENUE INGLEWOOD, CA 90301



**MEDICAL ASSET
MANAGEMENT**
MEDICAL PROPERTY SPECIALISTS



AARON BOSS

Director of Leasing & Management

(310) 517-4864

AaronB@Medicalasset.com

DRE #01381686



MITCH YANKOWITZ

Managing Partner

(310) 517-4861

MitchY@Medicalasset.com

DRE #01360137

*The information contained herein is deemed reliable, but cannot be guaranteed by Medical Asset Management and is subject to change.