

37519-37561 SCHOOLCRAFT
LIVONIA, MICHIGAN

HI-TECH FOR LEASE
2,500 Square Feet Available



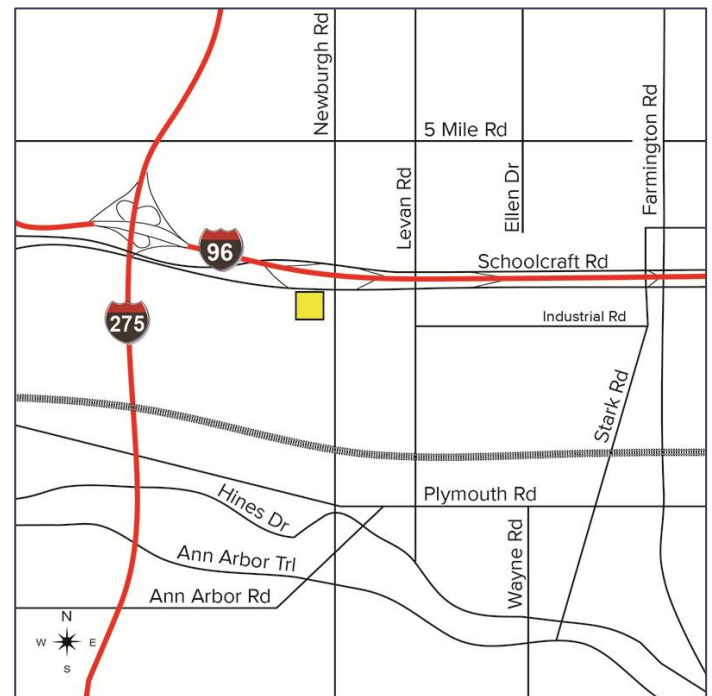
**SIGNATURE
ASSOCIATES**
KNOW SIGNATURE | KNOW RESULTS

LIVONIA RESEARCH CENTER



PROPERTY FEATURES

- 2,500 square feet available
- Complex professionally managed by Signature Associates
- Located just west of Newburgh and with easy access to I-96 & I-275
- Multiple office/shop configurations available and units have been recently renovated or can be finished to suit
- Aggressive lease rates



For more information, please contact:

CHRISTOPHER M. D'ANGELO
(248) 948 0109
cdangelo@signatureassociates.com

JASON STOUGH
(248) 948 4180
jstough@signatureassociates.com

SIGNATURE ASSOCIATES
One Towne Square, Suite 1200
Southfield, MI 48076
www.signatureassociates.com

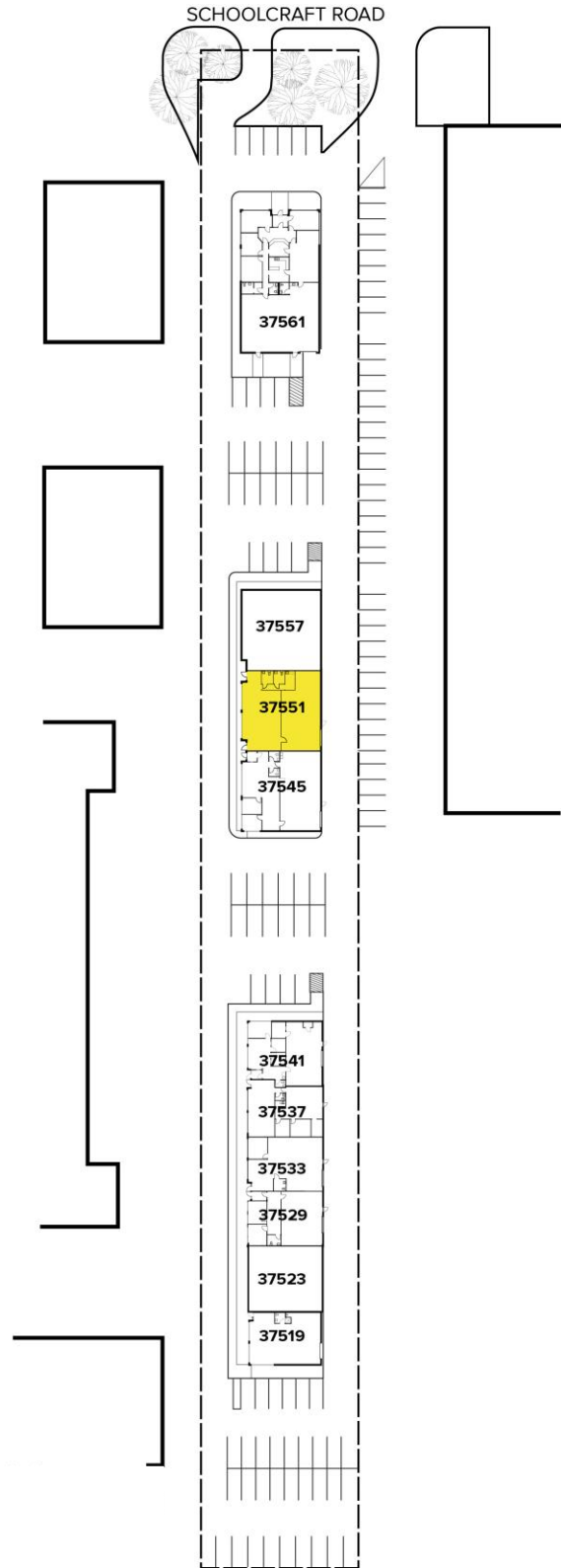
37519 - 37561 Schoolcraft Road - Livonia, Michigan

Hi-Tech For Lease

2,500
Square Feet
AVAILABLE

Site Plan

AVAILABILITY			
UNIT	TOTAL SF	OFFICE SF	RATE
37551	2,500	1,250	\$13.71 G + U



For more information, please contact:

CHRISTOPHER M. D'ANGELO
(248) 948 0109
cdangelo@signatureassociates.com

JASON STOUGH
(248) 948 4180
jstough@signatureassociates.com

SIGNATURE ASSOCIATES
One Towne Square, Suite 1200
Southfield, MI 48076
www.signatureassociates.com

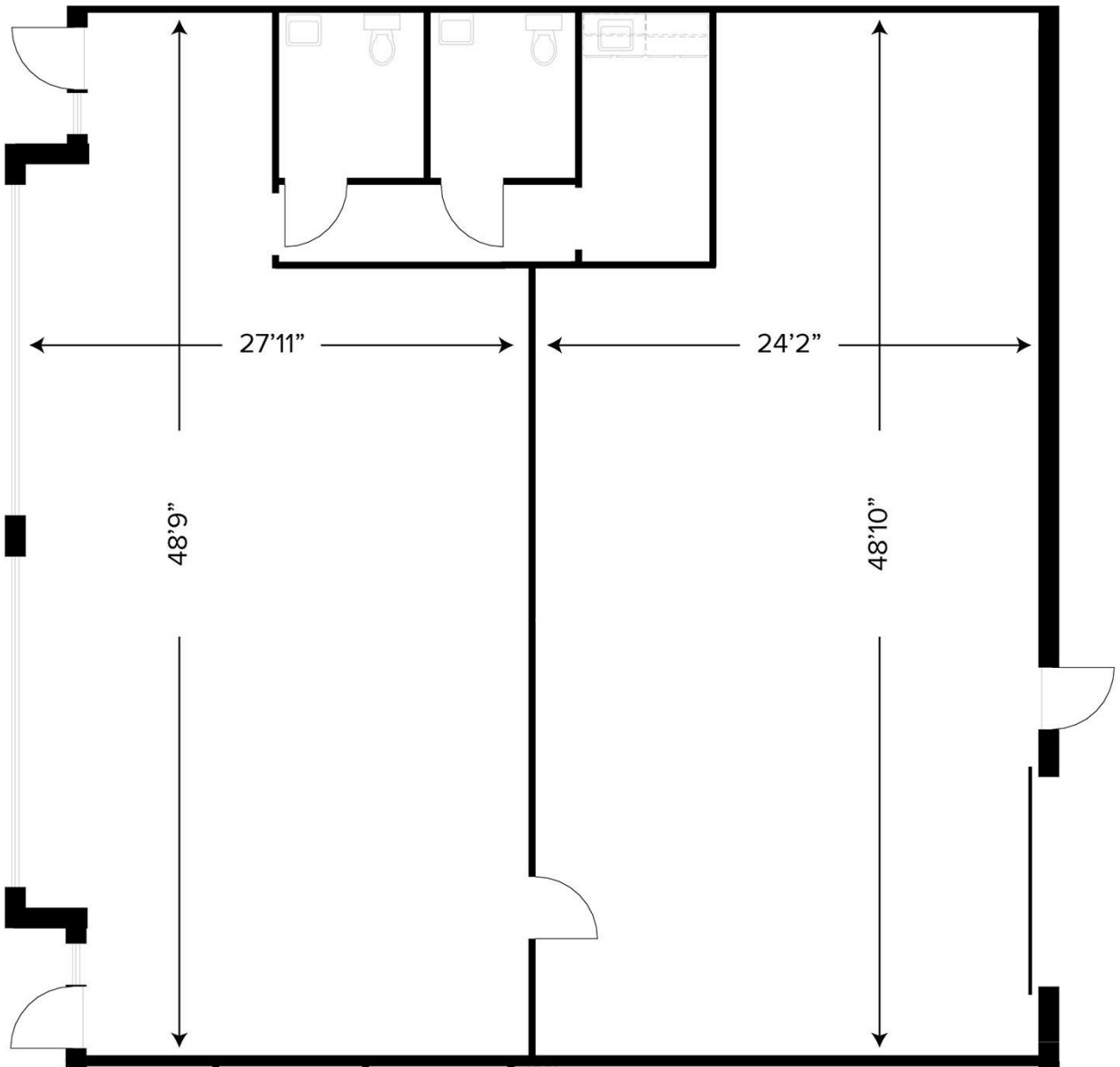
37519 - 37561 Schoolcraft Road - Livonia, Michigan

Hi-Tech For Lease

2,500
Square Feet
AVAILABLE

Floor Plan

AVAILABILITY			
UNIT	TOTAL SF	OFFICE SF	RATE
37551	2,500	1,250	\$13.71 G + U



For more information, please contact:

CHRISTOPHER M. D'ANGELO
(248) 948 0109
cdangelo@signatureassociates.com

JASON STOUGH
(248) 948 4180
jstough@signatureassociates.com

SIGNATURE ASSOCIATES
One Towne Square, Suite 1200
Southfield, MI 48076
www.signatureassociates.com