



# Saint Mary's Professional Building

**205 NW RD MIZE ROAD  
BLUE SPRINGS, MISSOURI**

## Property Highlights

- 620 sf to 10,006 sf available
- Located within Saint Mary's Medical Center campus
- Just off 7 Highway and minutes from I-70
- Minutes from retail amenities and restaurants
- Ample onsite parking
- Lease rate negotiable

## Available Suites

- Suite 100: 620 sf
- Suite 101: 1,310 sf
- Suite 104: 1,930 sf
- Suite 105: 2,270 sf
- Suite 200: 10,006 sf
- Suite 300: 10,006 sf

*For information, please contact:*

**Nick Suarez, SIOR, CCIM**

*Executive Managing Director, Principal*

t 816-512-1012

nsuarez@nzimmer.com

1220 Washington Street, Suite 300  
Kansas City, MO 64105

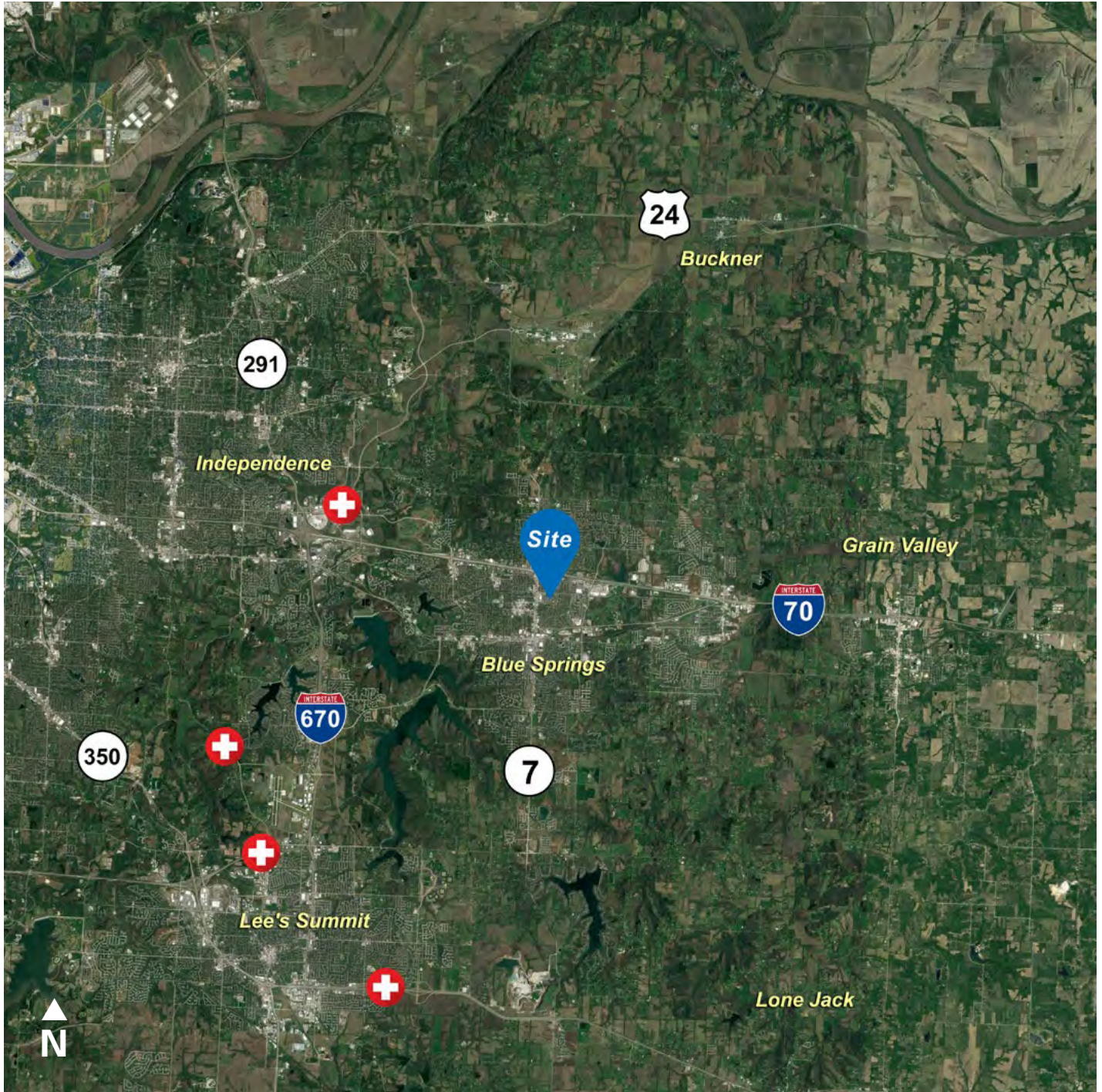
[nrmkzimmer.com](http://nrmkzimmer.com)



**NEWMARK  
ZIMMER**

The information contained herein has been obtained from sources deemed reliable but has not been verified and no guarantee, warranty or representation, either express or implied, is made with respect to such information. Terms of sale or lease and availability are subject to change or withdrawal without notice.

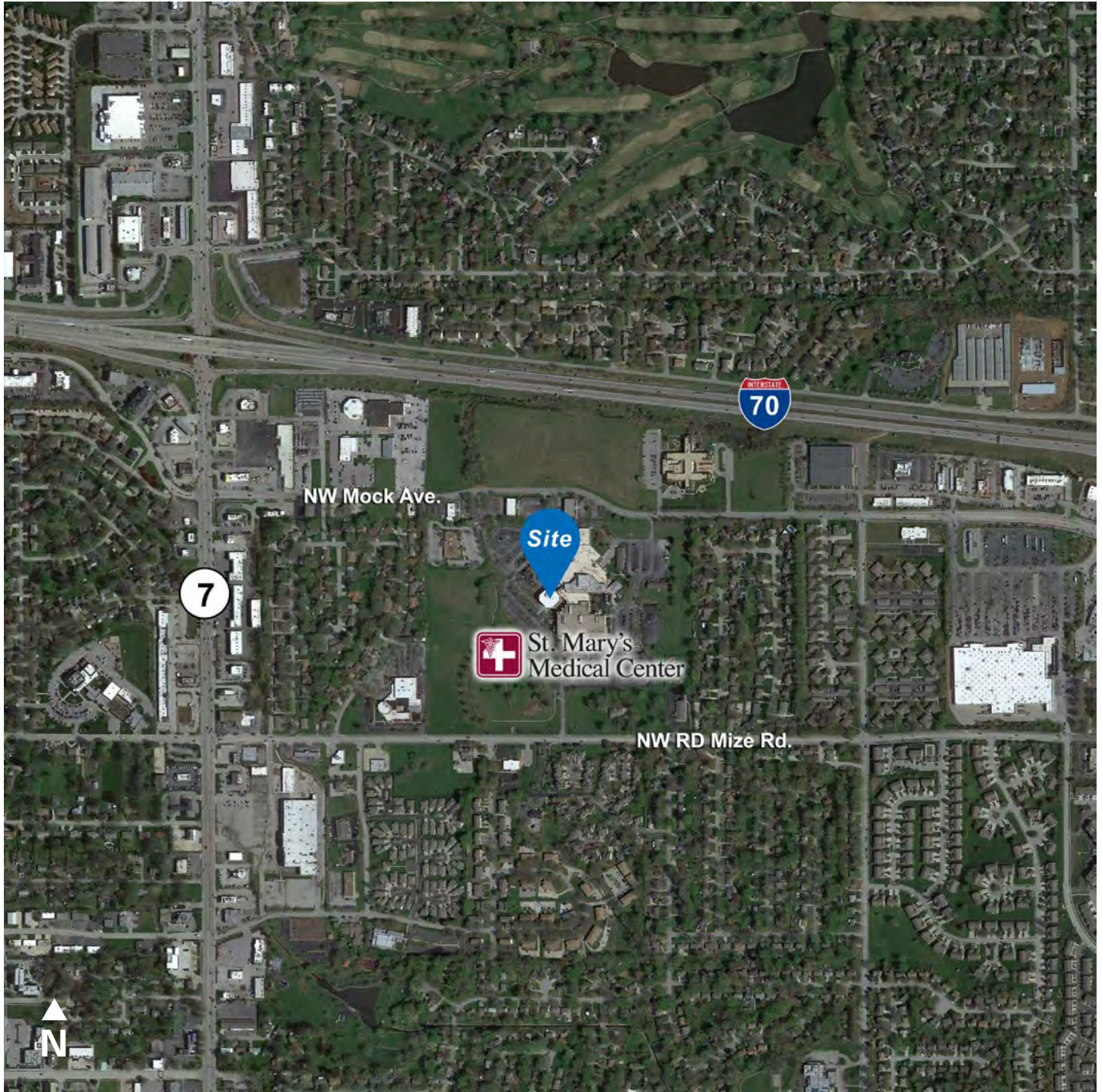
205 NW RD MIZE ROAD, BLUE SPRINGS, MISSOURI



CONTACT

**Nick Suarez, SIOR, CCIM**  
*Executive Managing Director, Principal*  
t 816-512-1012  
nsuarez@nzimmer.com  
[nmrkzimmer.com](http://nmrkzimmer.com)

205 NW RD MIZE ROAD, BLUE SPRINGS, MISSOURI



CONTACT

**Nick Suarez, SIOR, CCIM**

*Executive Managing Director, Principal*

t 816-512-1012

nsuarez@nzimmer.com

[nrmrkzimmer.com](http://nrmrkzimmer.com)

**NEWMARK**  
ZIMMER

205 NW RD MIZE ROAD, BLUE SPRINGS, MISSOURI

## Floor Plan



### CONTACT

**Nick Suarez, SIOR, CCIM**

*Executive Managing Director, Principal*

t 816-512-1012

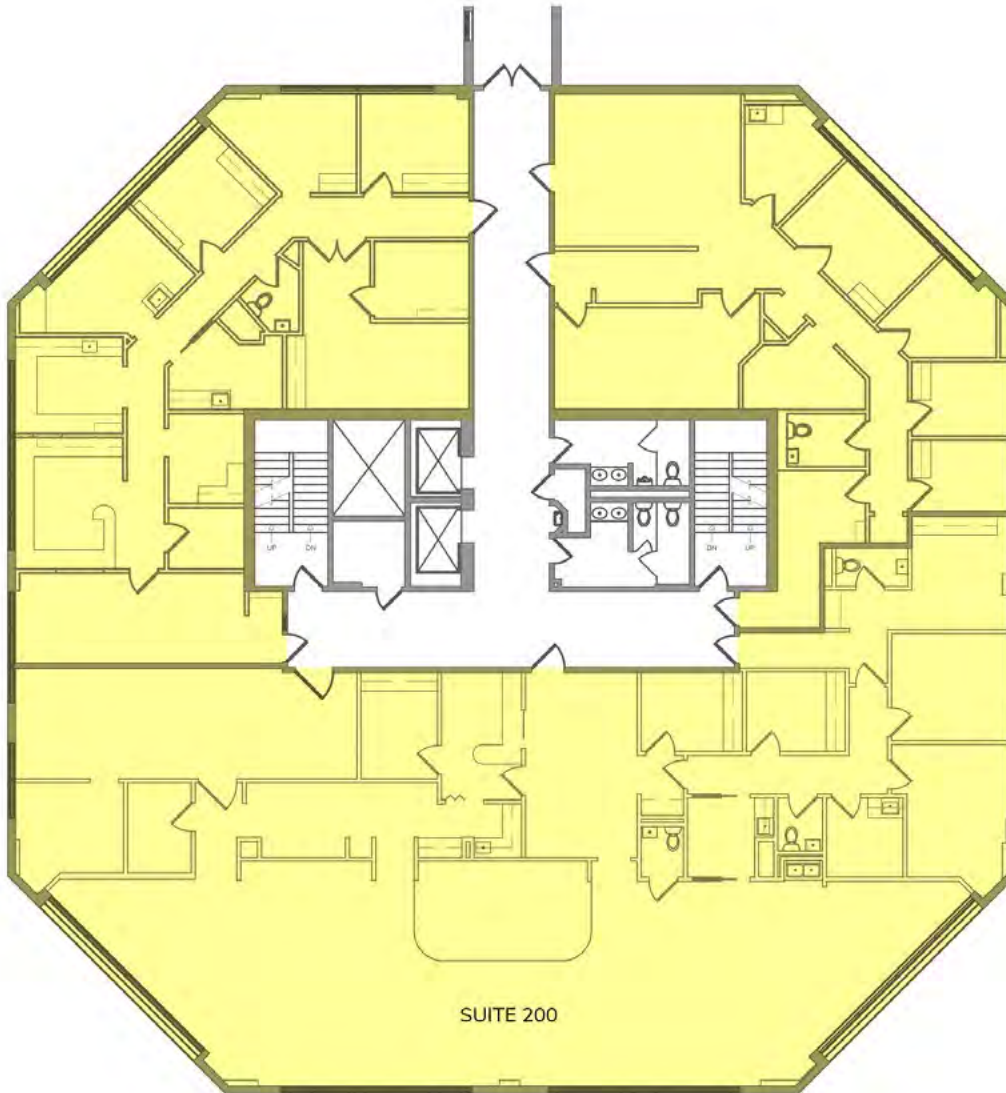
nsuarez@nzimmer.com

[nrmkzimmer.com](http://nrmkzimmer.com)

**NEWMARK**  
ZIMMER

205 NW RD MIZE ROAD, BLUE SPRINGS, MISSOURI

## Floor Plan



### CONTACT

---

**Nick Suarez, SIOR, CCIM**

*Executive Managing Director, Principal*

t 816-512-1012

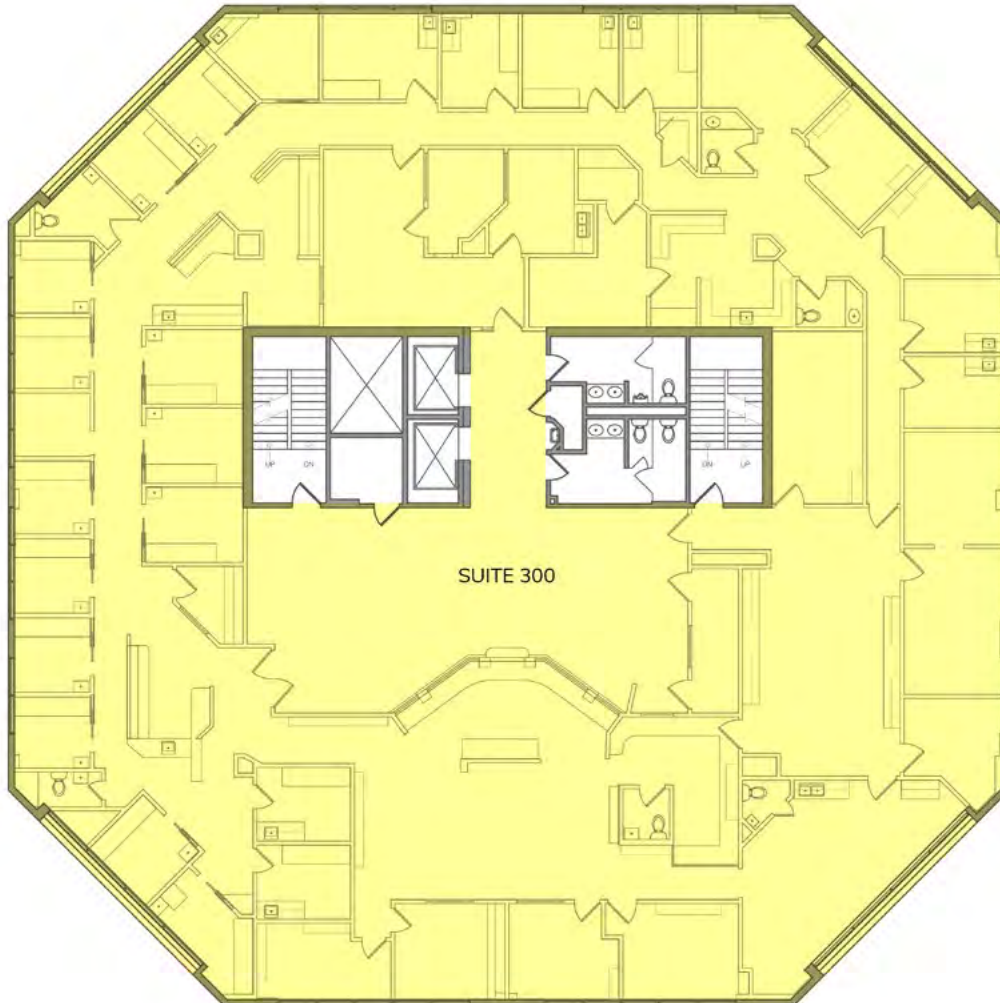
nsuarez@nzimmer.com

[nmrkzimmer.com](http://nmrkzimmer.com)

**NEWMARK**  
ZIMMER

205 NW RD MIZE ROAD, BLUE SPRINGS, MISSOURI

## Floor Plan



### CONTACT

---

**Nick Suarez, SIOR, CCIM**

*Executive Managing Director, Principal*

t 816-512-1012

nsuarez@nzimmer.com

[nmrkzimmer.com](http://nmrkzimmer.com)

**NEWMARK**  
ZIMMER