

**5E/256C New Line Road Dural NSW**



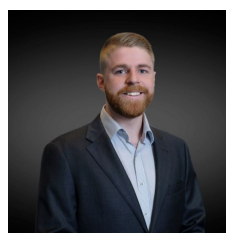
Opportunity to acquire a first class warehouse/ office suite within this highly sought-after pocket in Dural's industrial precinct. Only 8km to Castle Hill and within proximity to major infrastructure such as, Cherrybrook Metro and North Connex, plus within close proximity to Round Corner Dural.

**Features Include:**

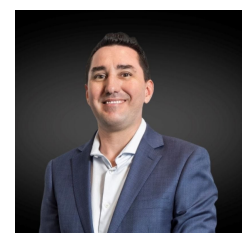
- Generous 4.5m Clearance, providing ample space for storage and easy access for loading and unloading.
- Concrete roof, provides insulation from outside weather, perfect for client controlled products.
- Excellent Natural Light with full height window façade in the upstairs offices.
- Ducted air conditioning in the offices.

[For full version visit the website](https://www.hillscentral.com.au)

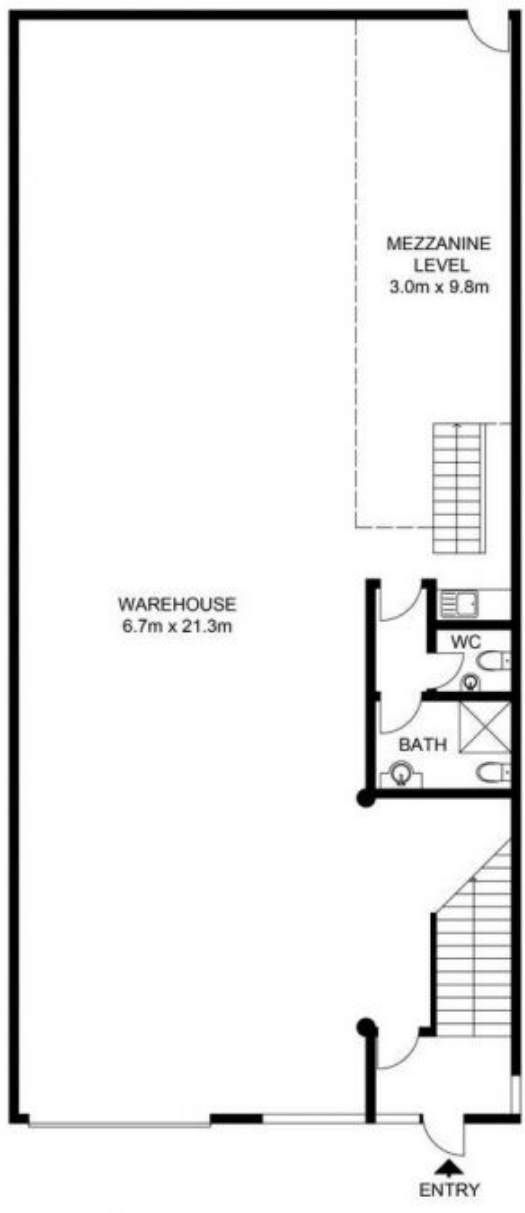
**Type** : Industrial  
**Price** : Contact Agent  
**Building Size** : 336 sqm  
**View** : <https://www.hillscentral.com.au/sale/nsw/hills/dural/commercial/industrial/8593570>



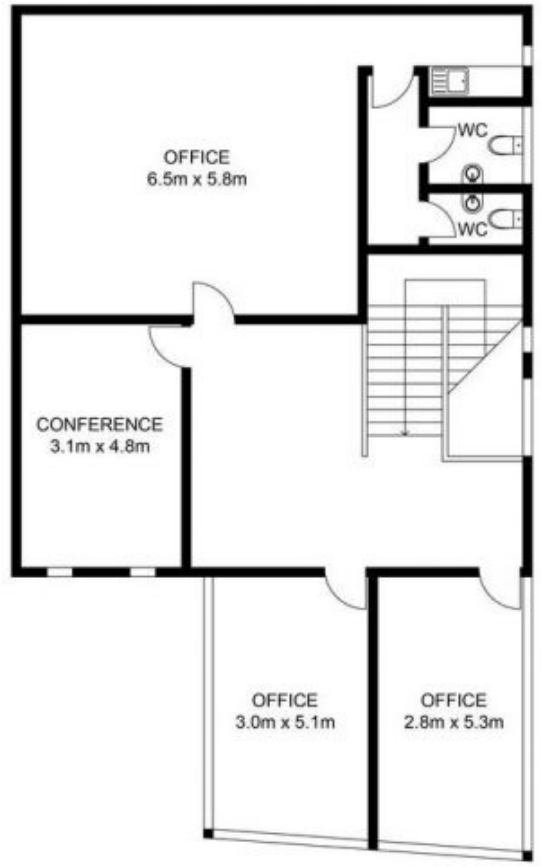
**Bailey Foxall**  
02 9634 2299



**Simon Russo**  
02 9634 2299



GROUND FLOOR



FIRST FLOOR

5E/256 New Line Road, Dural

Not to scale • All measurements are approximate • Drawn for marketing purposes only • Floorplan by © Industrie Media

