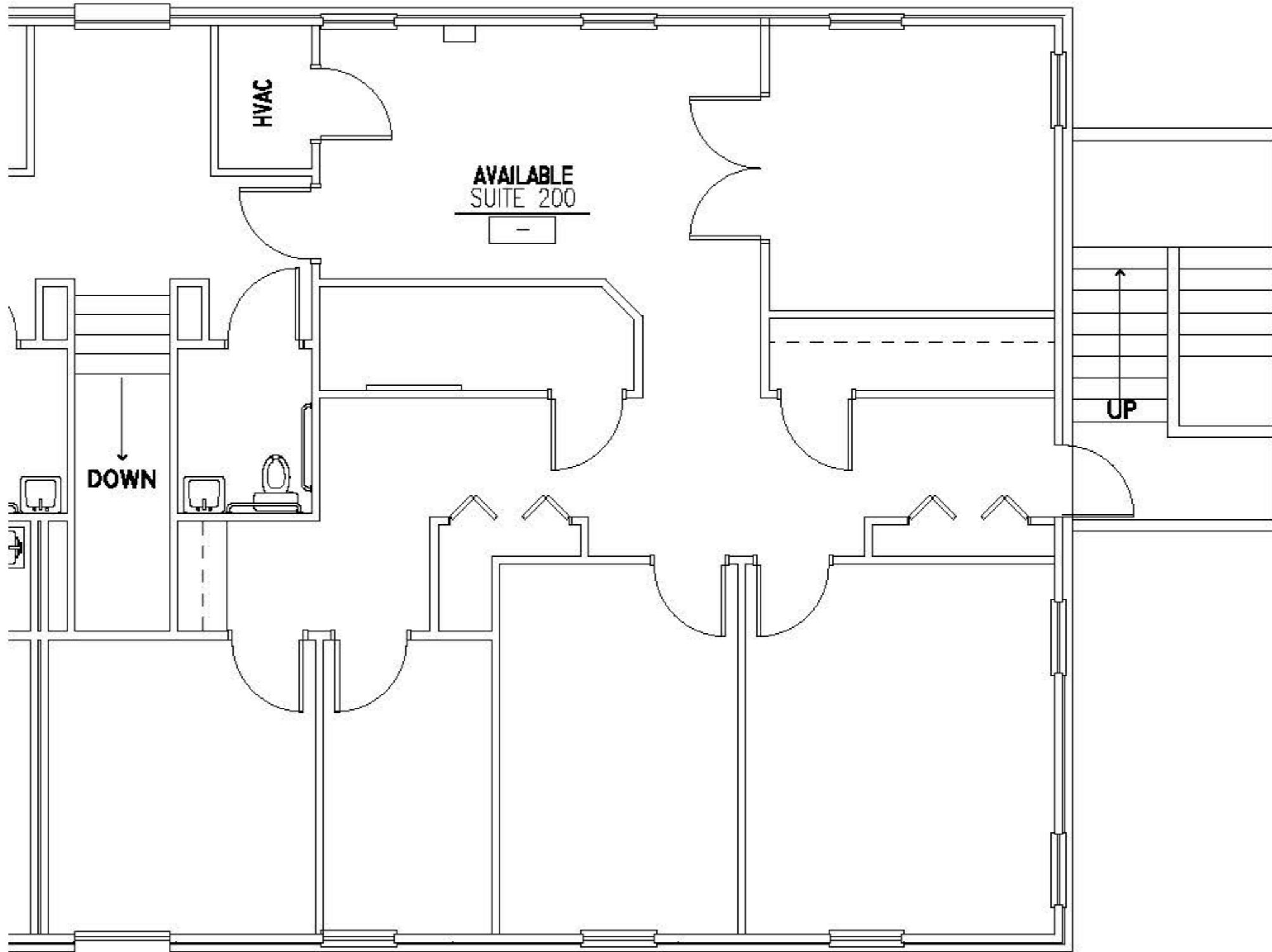
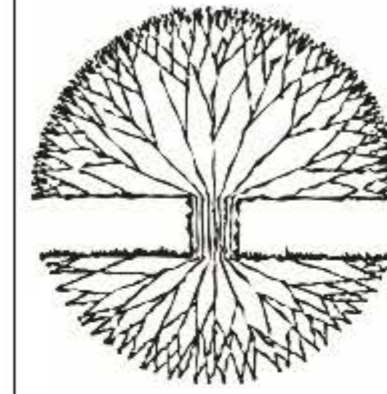


**Dominion Court Office Park
11097 Houze Road
Roswell, GA 30075**



**Washington Building 11097
Suite 200**

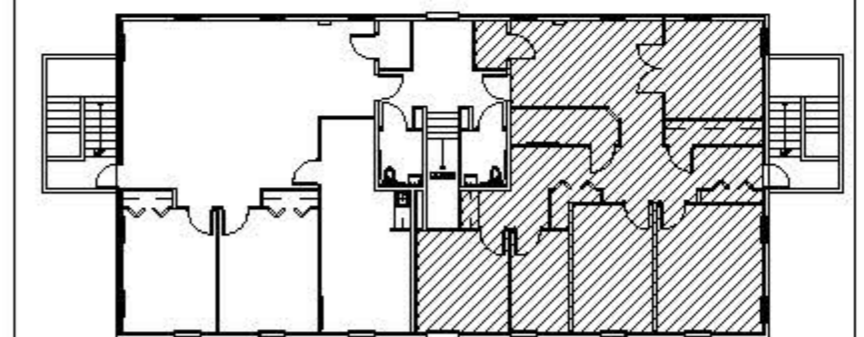
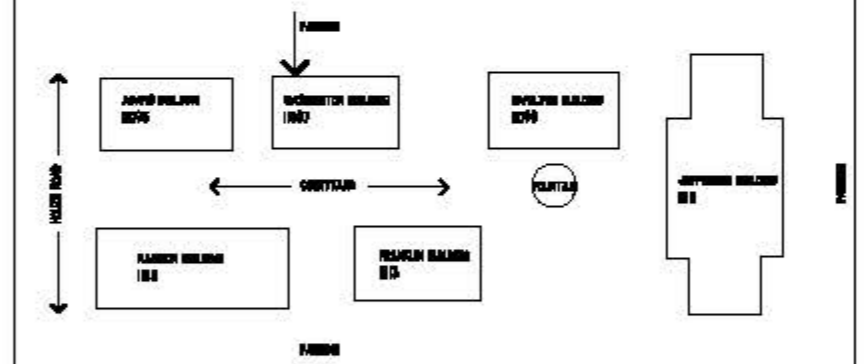
1,650 RSF



SugarOak
REALTY, LLC

John Simpson
Managing Broker | SugarOak Realty, LLC
8302 Dunwoody Place, Suite 135
Sandy Springs, GA 30350
770-409-9700 (O) | 404-788-2438 (m)
JohnS@SugarOak.com

SITE PLAN



KEYPLAN

PLANNING
INTERIORS
INC

PLANNING INTERIORS INC
6000 LAKE FORREST DRIVE
SUITE 210 ATLANTA GA 30328

NAOMI CLARK
TEL 470-545-4907
WWW.PLANNING-INTERIORS.COM