

INTERSTATE WAREHOUSE PARK

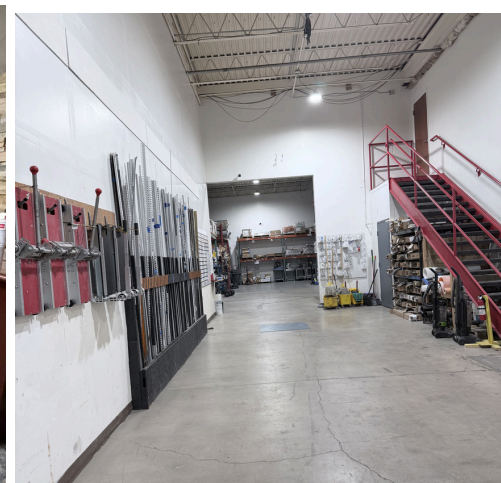
FLEX SPACE FOR *Lease*



Highly visible from 6th Avenue, Interstate Warehouse Park provides an exceptional and rare mix of small-bay office/warehouse units in an ideal West Side Location with near immediate access to 6th Avenue, C470 and I70. Local ownership and management, video surveillance and upgraded signage along 6th Avenue.

PROPERTY HIGHLIGHTS

- Building Size:** 84,622 (2 bldgs)
- Zoning:** I-3
- Power:** 120 | 3 Phase
- Parking:** 2:1,000 sf
- HVAC:** Office area (+ Warehouse Heat)
- County:** Jefferson
- Signage:** Backlit Monument Sign
- Yard:** Fenced



WC JOHNSON

INVESTMENT | DEVELOPMENT | MANAGEMENT

747 SHERIDAN BLVD., 7D
LAKEWOOD, CO 80214

FOR MORE INFORMATION CONTACT:

Becky DeLorenzo
Email: becky@wcjre.com
Office: 720.350.4680
Cell: 720.320.7688

UNIT 15850

- Size: 7,964 sf
 - Lease Rate: \$14/sf/yr NNN
 - NNN Expenses: \$5.39/sf
 - Availability: May 1, 2026
 - 2 Drive-ins, 1 Loading Dock
- Additional second-floor office with kitchenette, 2 restrooms, conference room, and storage not included in the listed square footage

