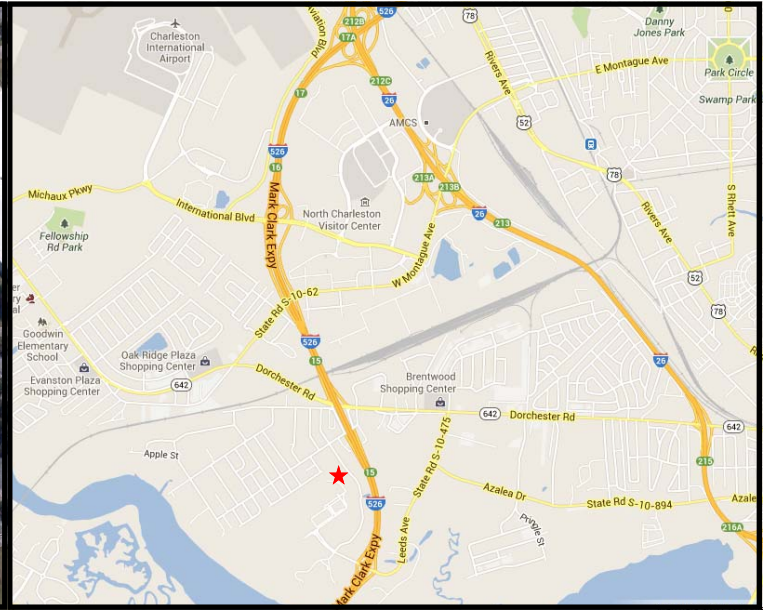


For Lease

Flex Building With Class A Office

Executive Park at Faber Place

3860 Faber Place Drive, North Charleston, SC 29406



Summary:

- Located in North Charleston's premier 80 acre business park with direct proximity to I-526 and I-26
- 42,484 sf stand alone building built-in 1996
- Single story with high ceilings
- Approximately 15,000 sf of office/flex space available for lease
- Prior tenant was a defense contractor with an office lab space and a warehouse component with HVAC and additional offices
- Lease rate is \$12.00 psf NNN
- MLS #1414338 and #1414385
- Light industrial zoning

EDWARD G. ROBINSON IV

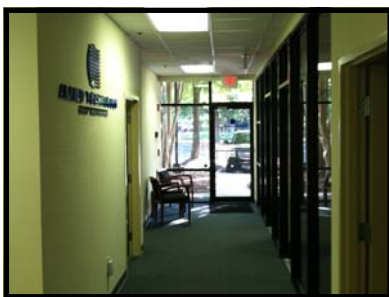
211 King Street, Suite 300 • Charleston, South Carolina 29401
843.864.3760 Mobile • 843.277.3075 Office • 843.722.6449 Fax
erobinson@thebeachcompany.com

BEACH
COMMERCIAL

A Division of The Beach Company

For Lease

Flex Building With Class A Office



Specifications:

- Charleston County
- City of North Charleston
- Tax Map #410-00-00-018
- Zoned light industrial
- 3.62 acres
- Suite 300 is comprised of a reception office, 18 individual offices, large conference room, large lab area, small warehouse, a larger warehouse, break room and a kitchenette
- Built in 1996
- Parking is a 4/1,000 sf ratio
- Two drive-in doors, measuring 10x12 and 12x14
- Interior forklift ramp and dock
- Single story
- Storefront windows with potential truck access from the rear
- Move-in ready

EDWARD G. ROBINSON IV
211 King Street, Suite 300 • Charleston, South Carolina 29401
843.864.3760 Mobile • 843.277.3075 Office • 843.722.6449 Fax
erobinson@thebeachcompany.com

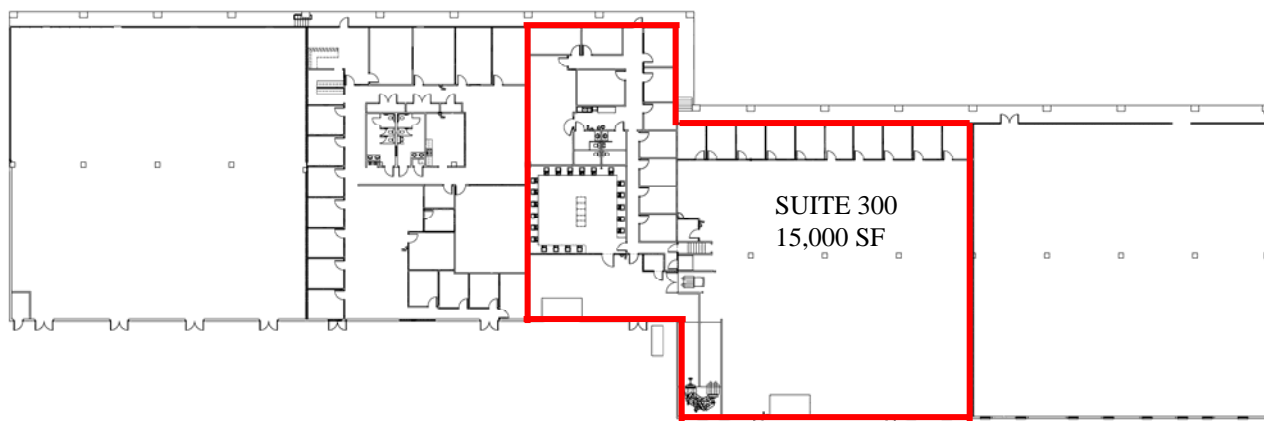
BEACH
COMMERCIAL

A Division of The Beach Company

For Lease

Flex Building With Class A Office

----- Faber Place Drive -----



EDWARD G. ROBINSON IV

211 King Street, Suite 300 • Charleston, South Carolina 29401
843.864.3760 Mobile • 843.277.3075 Office • 843.722.6449 Fax
erobinson@thebeachcompany.com

BEACH
COMMERCIAL

A Division of The Beach Company