



SUBLEASE AVAILABLE - HIGH BAY INDUSTRIAL / WAREHOUSE / DISTRIBUTION

185 Grassy Plain Road, Bethel, CT 06801

LEASE



OFFERING SUMMARY

Available SF: 14,560

Lease Rate: Negotiable

Lot Size: 20.88 Acres

Year Built: 1970

Building Size: 72,000 SF

Zoning: I

PROPERTY OVERVIEW

Coldwell Banker Commercial Realty presents for lease 185 Grassy Plain Road in Bethel, Connecticut. The entire 72,000 SF facility has been recently renovated into a Multi-Tenant Class A industrial building. The site has been repaved and striped.

PROPERTY HIGHLIGHTS

- 14,560 SF Available
- 20' - 26' Ceiling Height
- HVAC throughout Office / WHS
- 1 Loading Docks
- 1 Drive-in Doors
- Office area includes 2 private offices, conference room, breakroom, 2 private ADA bathrooms, and Men's/Women's multi stall bathroom.
- Heavy Power
- Building is Expandable

CBCWORLDWIDE.COM

Joe Wrinn, SIOR
203 417 4888
joe.wrinn@cbcprt.com

Dan Sousa
203 948 7870
dan.sousa@cbcprt.com



COLDWELL BANKER
COMMERCIAL REALTY



HIGH BAY INDUSTRIAL / WAREHOUSE / DISTRIBUTION - SUBLEASE AVAILABLE

185 Grassy Plain Road, Bethel, CT 06801

LEASE



CBCWORLDWIDE.COM

Joe Wrinn, SIOR
203 417 4888
joe.wrinn@cbcprt.com

Dan Sousa
203 948 7870
dan.sousa@cbcprt.com



COLDWELL BANKER
COMMERCIAL REALTY



SUBLEASE AVAILABLE - HIGH BAY INDUSTRIAL / WAREHOUSE / DISTRIBUTION

185 Grassy Plain Road, Bethel, CT 06801


LEASE



CBCWORLDWIDE.COM

Joe Wrinn, SIOR
203 417 4888
joe.wrinn@cbcrt.com

Dan Sousa
203 948 7870
dan.sousa@cbcrt.com

 **COLDWELL
BANKER
COMMERCIAL**
COLDWELL BANKER
COMMERCIAL REALTY

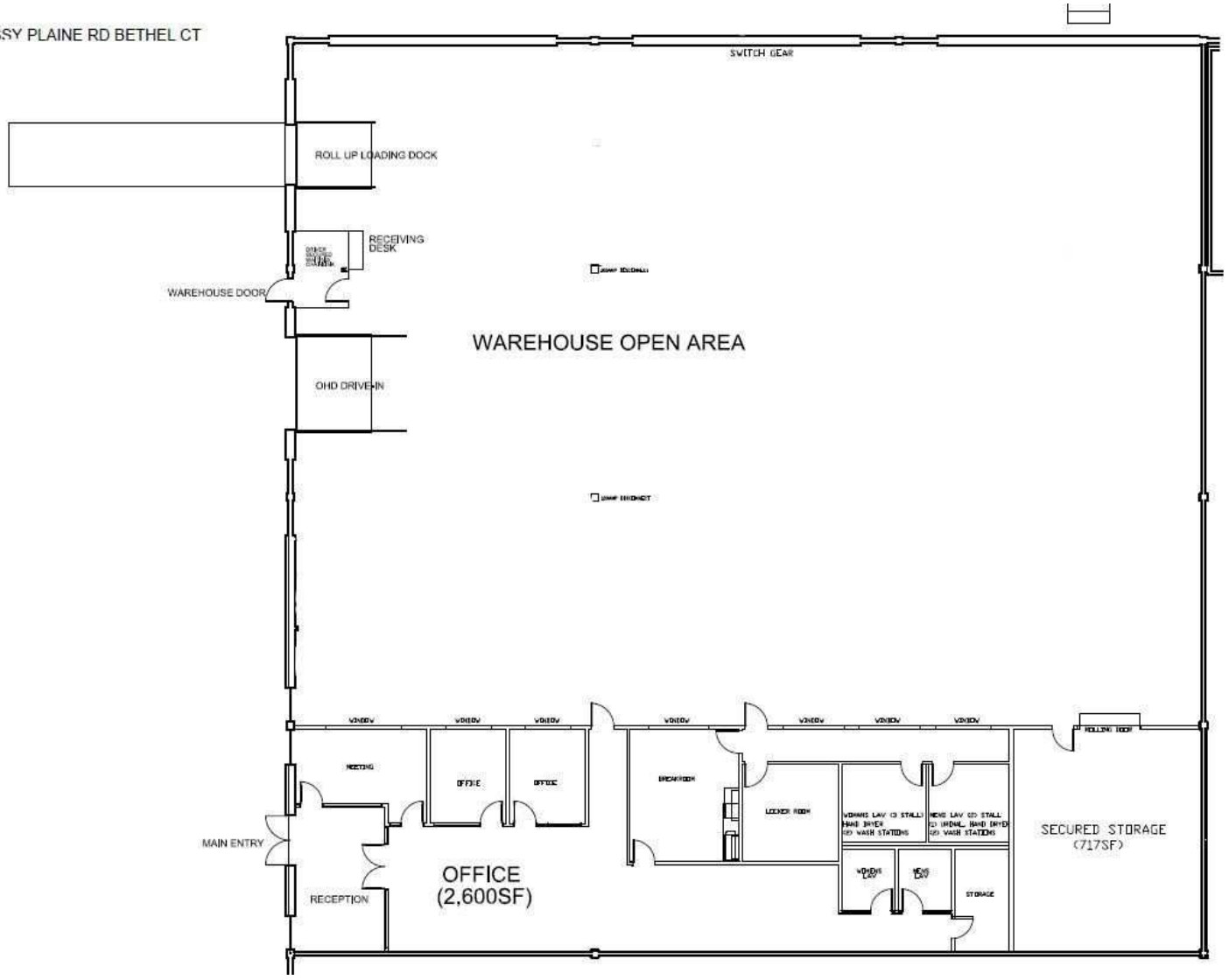


HIGH BAY INDUSTRIAL / WAREHOUSE / DISTRIBUTION

185 Grassy Plain Road, Bethel, CT 06801

LEASE

85 GRASSY PLAIN RD BETHEL CT



CBCWORLDWIDE.COM

Joe Wrinn, SIOR
 203 417 4888
 joe.wrinn@cbcrt.com

Dan Sousa
 203 948 7870
 dan.sousa@cbcrt.com



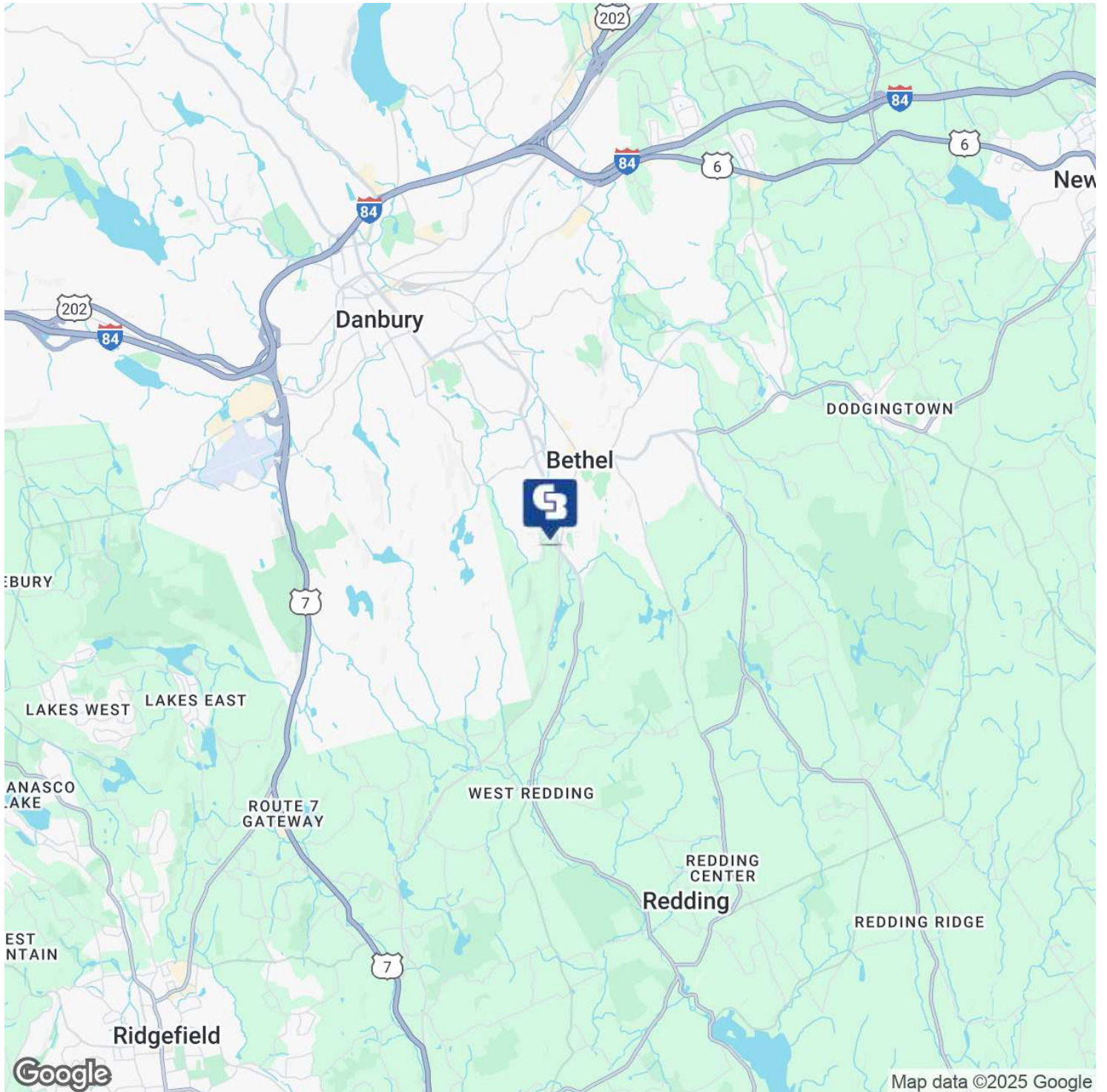
COLDWELL BANKER
 COMMERCIAL REALTY



HIGH BAY INDUSTRIAL / WAREHOUSE / DISTRIBUTION

185 Grassy Plain Road, Bethel, CT 06801

LEASE



CBCWORLDWIDE.COM

Joe Wrinn, SIOR
203 417 4888
joe.wrinn@cbcncrt.com

Dan Sousa
203 948 7870
dan.sousa@cbcncrt.com



COLDWELL BANKER
COMMERCIAL REALTY