

APARTMENTS

2340 WHITNEY AVE  
HAMDEN, CT

**GREGG WIES &  
GARDNER  
ARCHITECTS, LLC**

1000 Main Street, Suite 200  
Hamden, CT 06430  
Tel: 203.261.1111  
www.greggwies.com

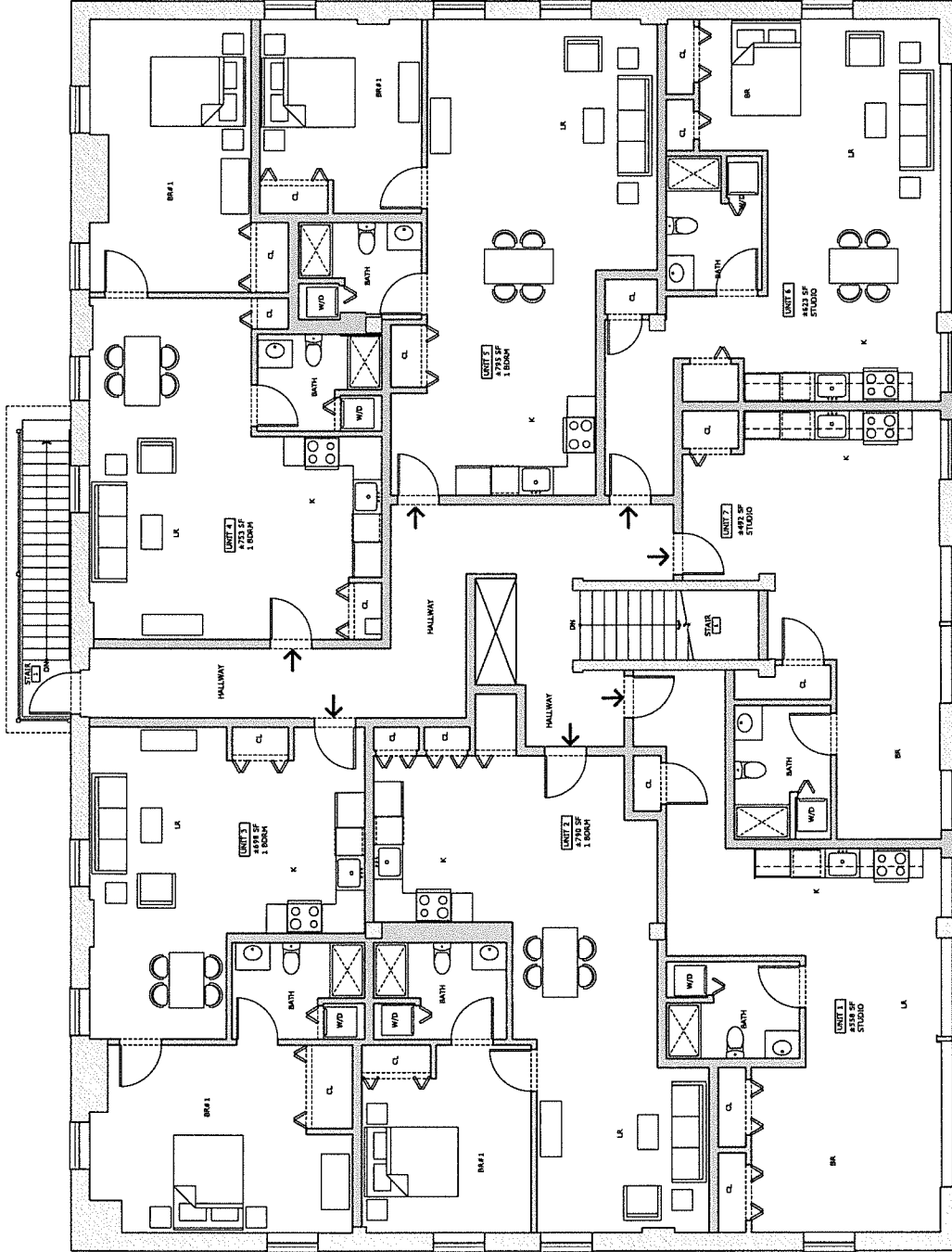
CONSULTANTS

IF PRINTED ON 11X17  
DRAWINGS ARE  
HALF SCALE

DOB NUMBER: 1201.00  
CHECKED BY:  
ISSUE DATE: JANUARY 2012  
REVISED:

SECOND FLOOR  
PLAN

A-2.0



1 SECOND FLOOR PLAN  
A-2.0 1/4"=1'-0"

APARTMENTS

2340 WHITNEY AVE  
HAMDEN, CT

**CREGG WIES &  
GARDNER**  
ARCHITECTS, LLC

1000 MAIN STREET, SUITE 200  
HAMDEN, CT 06430  
TEL: 203.562.1111 FAX: 203.562.1112  
WWW.CREGGWIESANDGARDNER.COM

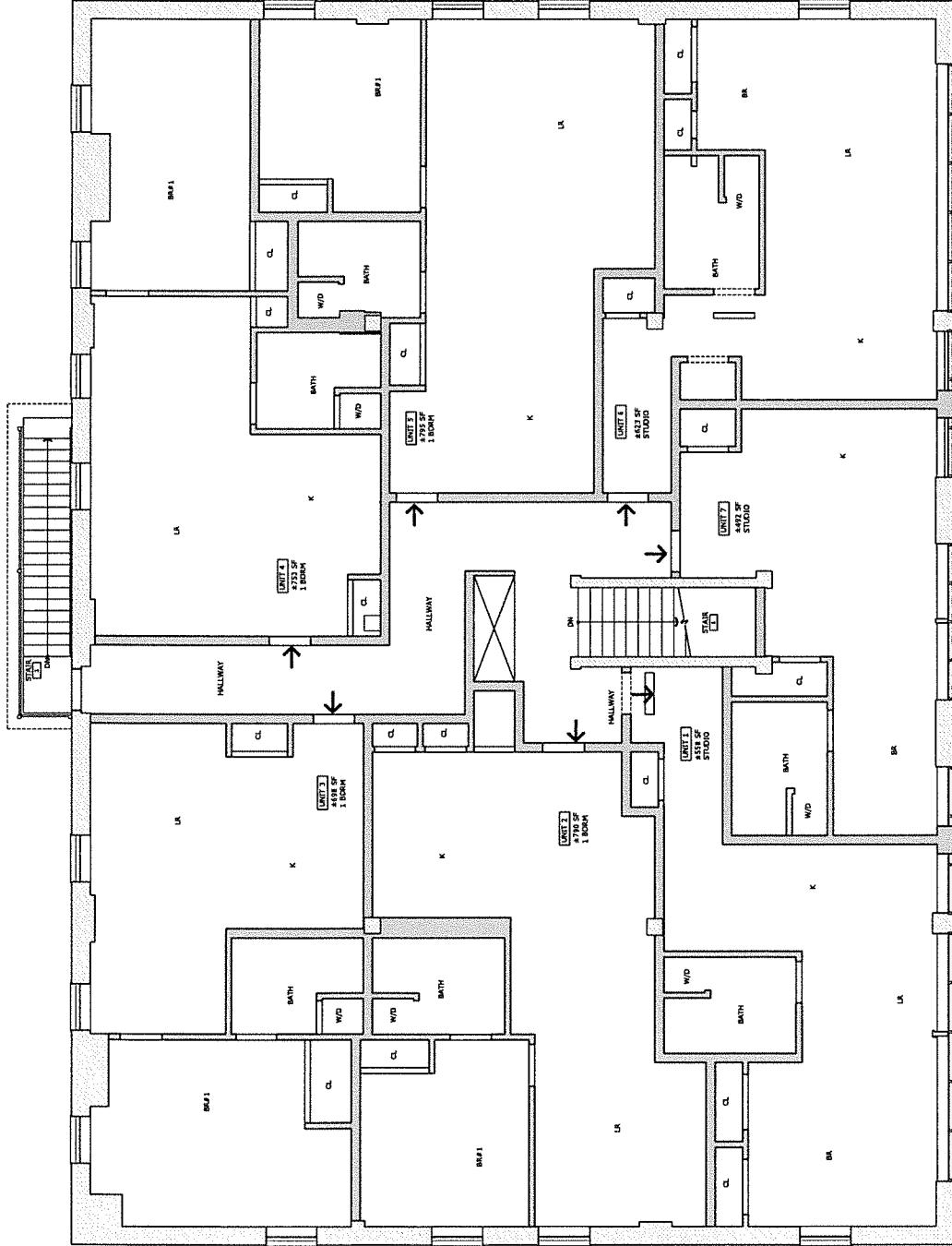
CONSULTANTS

IF PRINTED ON 11x17  
DRAWINGS ARE  
HALF SCALE

DATE: 2/20/16  
DRAWN BY: [REDACTED]  
CHECKED BY: [REDACTED]  
ISSUE DATE: JANUARY 2012  
REVISED: [REDACTED]

REFLECTED CEILING  
PLAN

A-3.0



1 REFLECTED CEILING PLAN (SECOND FLOOR)  
R-3.0 1/4"=1'-0"