

FOR LEASE

5250 East US-36
Avon, IN 46123



PROPERTY DETAILS



- 5,711 RSF available for lease

- Building Size: 35,033 RSF



- Medical spec suite coming soon



- Located on US-36 with exposure to over 17,000 daily drivers



- Central to Avon, Danville, Brownsburg, and Plainfield



- Less than 4 miles from Hendricks Regional Health Main Hospital

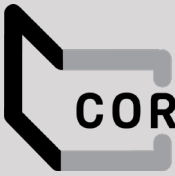
Campus



CONTACT

Charles J. Yeo, CCIM, CPM
Senior Vice President, Brokerage
317.288.9006
cyeo@cciin.com

HQ: Cornerstone Companies, Inc.
8902 N Meridian Street, Suite 205
Indianapolis, IN | 317.841.9900
cornerstonecompaniesinc.com



CORNERSTONE

FLOOR PLAN

5250 East US-36

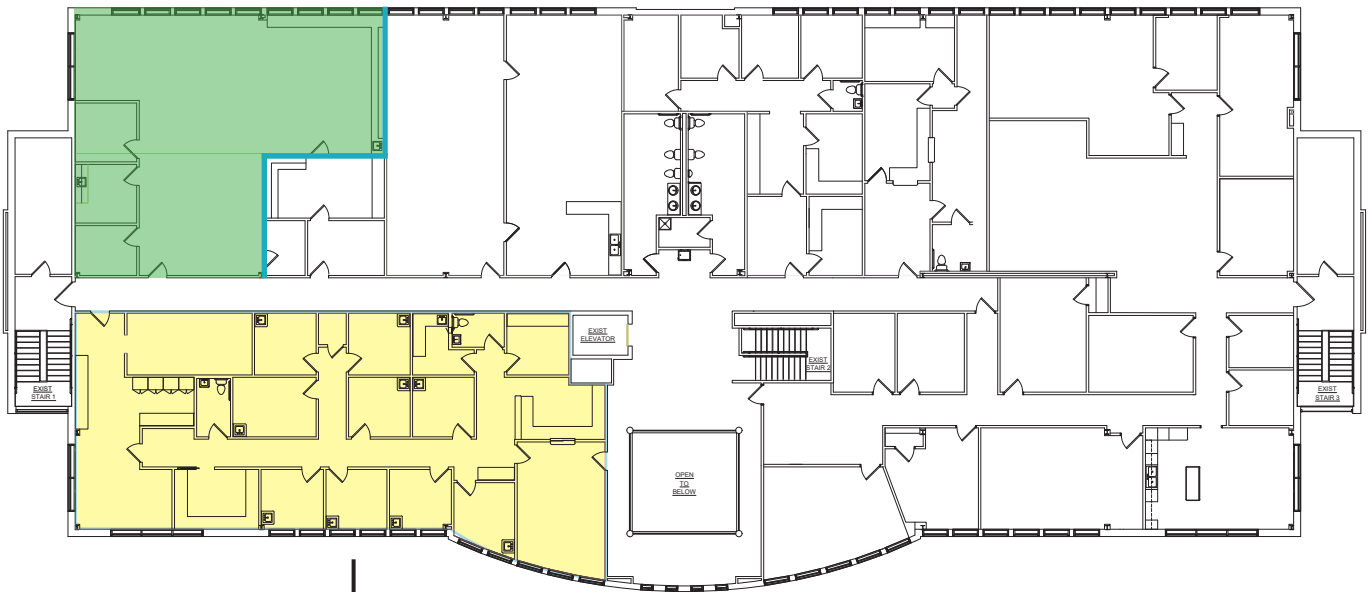
Avon, IN 46123



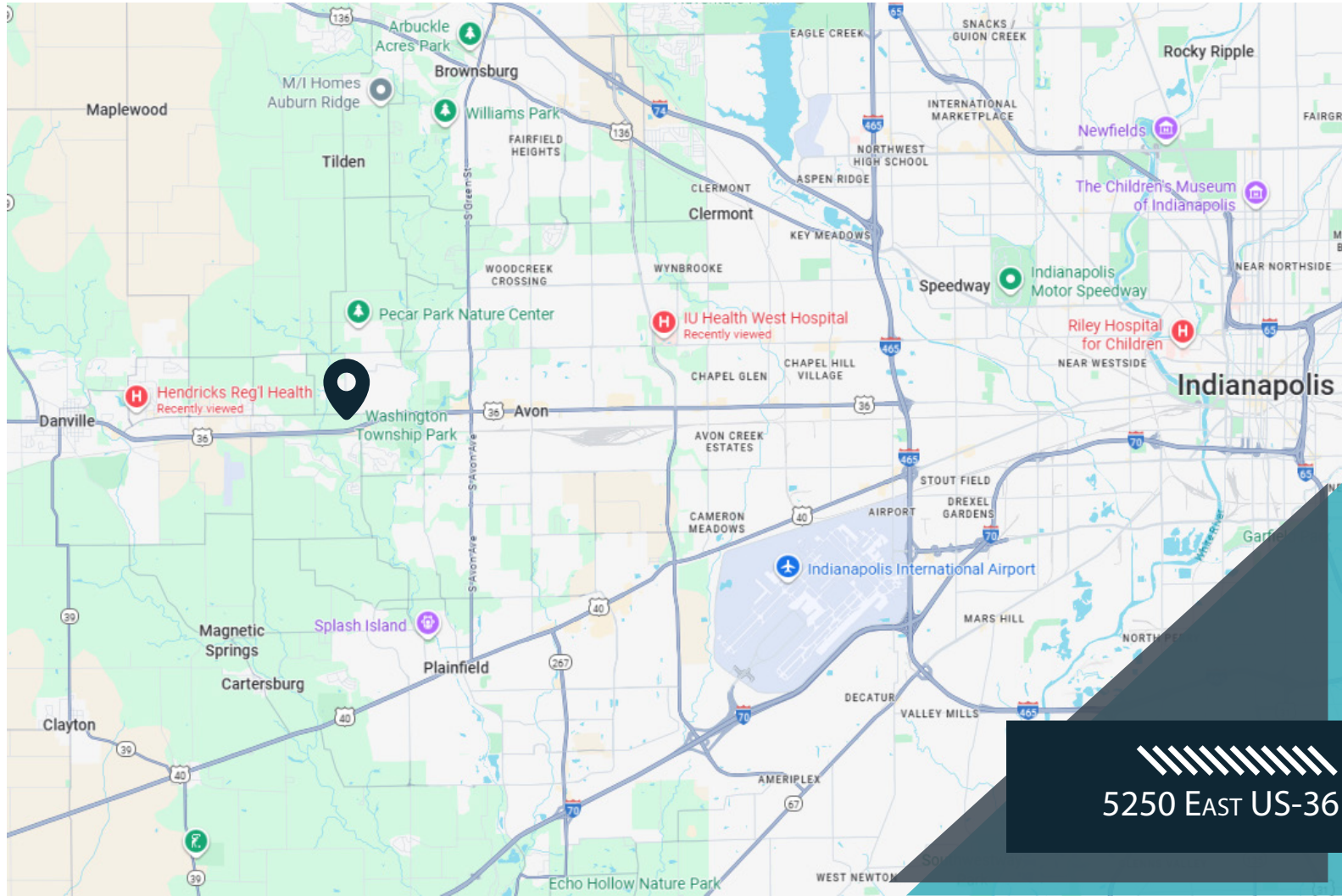
Suites Available

2nd Floor

Suite 660
2,069 RSF



Suite 650
3,642 RSF



5250 EAST US-36

DEMOGRAPHICS (3 - mile radius)

- 25,620 Population
- 43.2 Median Age
- 9,473 Households
- \$107,374 Median Household Income
- \$127,723 Average Household Income



CONTACT

Charles J. Yeo, CCIM, CPM
 Senior Vice President, Brokerage
 317.288.9006
 cyeo@cciin.com



Cornerstone Companies, Inc.
 8902 N Meridian Street, Suite 205
 Indianapolis, IN 46260

