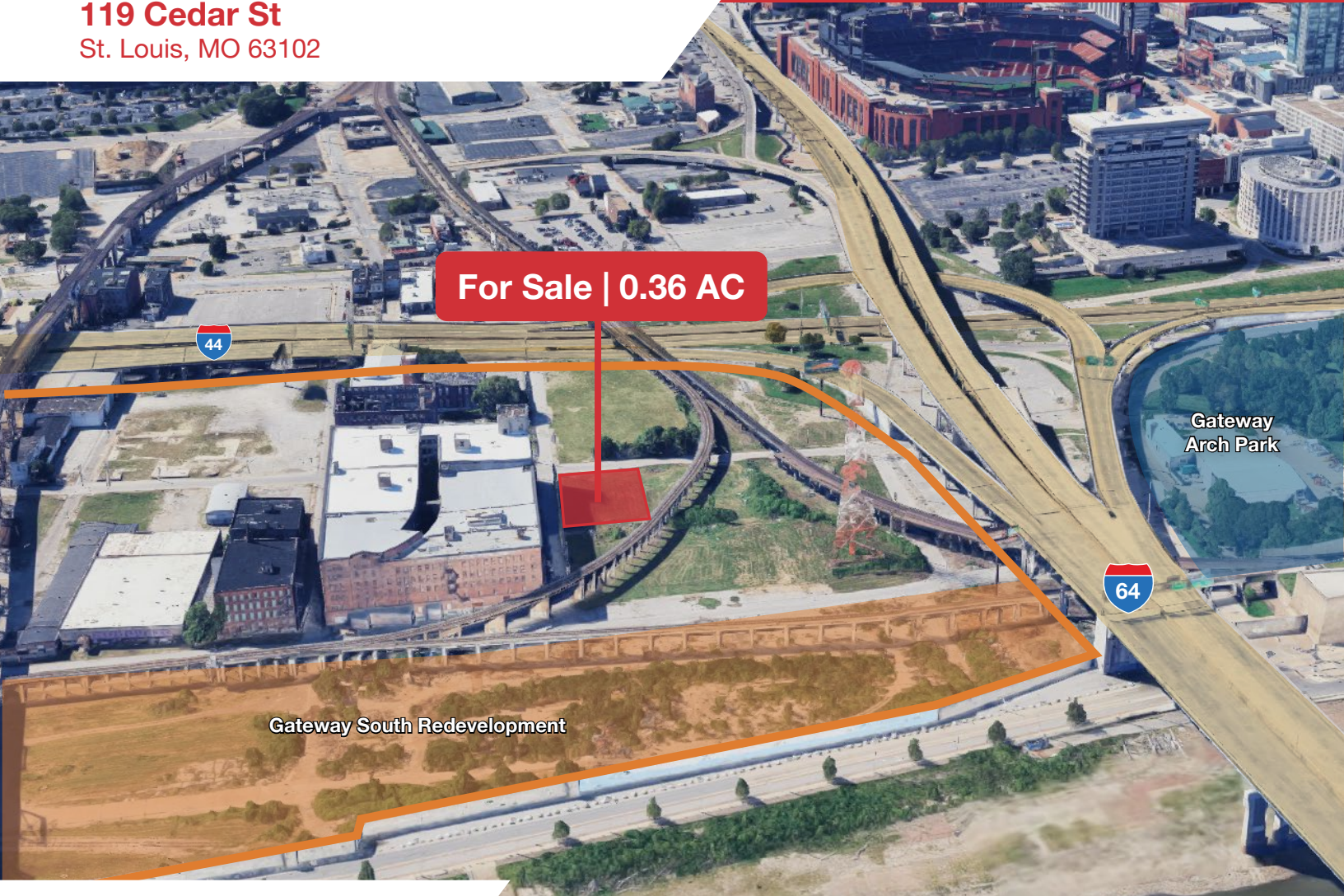


# For Sale

**119 Cedar St**  
St. Louis, MO 63102



**For Sale | 0.36 AC**

Gateway South Redevelopment

Gateway Arch Park

## Property Highlights



**For Sale**  
0.36 AC



**Land - Zoned L (Jefferson Memorial District)**



**Located Adjacent to Proposed Gateway South**



**Sale Price:**  
\$990,000

For more information, please contact:



**Meghan Donovan**  
d (314) 994 - 2320  
c (314) 810 - 9213  
mdonovan@naidesco.com

**NAIDESCO**  
8112 Maryland Ave, Suite 300  
St. Louis, MO 63105  
(314) 994 - 4800  
[naidesco.com](http://naidesco.com)

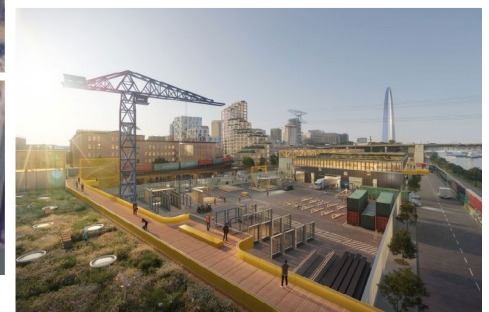
## Property Features

- 0.36 AC in St. Louis City
- Walking distance to the Arch grounds
- Adjacent to proposed Gateway South - A 100 acre master planned development in downtown St. Louis
- Zoned L - Jefferson Memorial District

 **Sale Price: \$990,000**



### Gateway South Redevelopment







**Meghan Donovan**

d (314) 994 - 2320

c (314) 810 - 9213

mdonovan@naidesco.com



**NAIDESCO**

8112 Maryland Ave, Suite 300

St. Louis, MO 63105

(314) 994 - 4800

[naidesco.com](http://naidesco.com)