

For Lease: Suite 102 (1,137 SF)



FOR LEASE

SUITE 102
360 UNIVERSITY AVE W
SAINT PAUL, MN 55103

Results
COMMERCIAL
RE/MAX RESULTS

EXECUTIVE SUMMARY

RETAIL OR OFFICE STOREFRONT AVAILABLE
360 UNIVERSITY AVE W, SAINT PAUL, MN 55103



OFFERING SUMMARY

Lease Rate:	\$15.00 SF/YR (NNN)
CAM/Tax Expense:	\$10.21 SF/YR
Total Rent Rate:	\$2,390/month
Building Size:	15,688 SF
Available SF:	1,137 SF
Year Built:	2016
Zoning:	T2
Parking Spaces:	2

LEASE OVERVIEW

- **Turn-key 1,137 SF office space available immediately**
- **Competitive base lease rate starting at \$1,422/Month + \$968/Month for CAM/TAX (\$2,390/month total)**
- 2 designated parking spaces in the private lot on the south side of the building for Tenant's customers
- Easy access to I-94 and public transportation (light rail station across street)
- Open floor plan to accommodate different business needs
- Great visibility along University Avenue with strong daily traffic counts and excellent frontage and signage
- Close proximity to downtown St Paul and State Capitol
- High-quality finishes and contemporary design
- Private kitchenette space and small office/conference room for staff
- Large storefront windows for natural light
- Signage for Tenant is available at Tenant's expense and subject to Landlord approval
- **Contact Listing Brokers for more information & tours**

Presented By:

Ivan Alvarado | Commercial & Investment Broker | 612.806.2505 | ivan@resultscommercial.com

Hayden Hulsey, CCIM | Commercial & Investment Broker | 651.769.4826 | hayden@resultscommercial.com



PROPERTY PHOTOS

RETAIL OR OFFICE STOREFRONT AVAILABLE
360 UNIVERSITY AVE W, SAINT PAUL, MN 55103



Presented By:

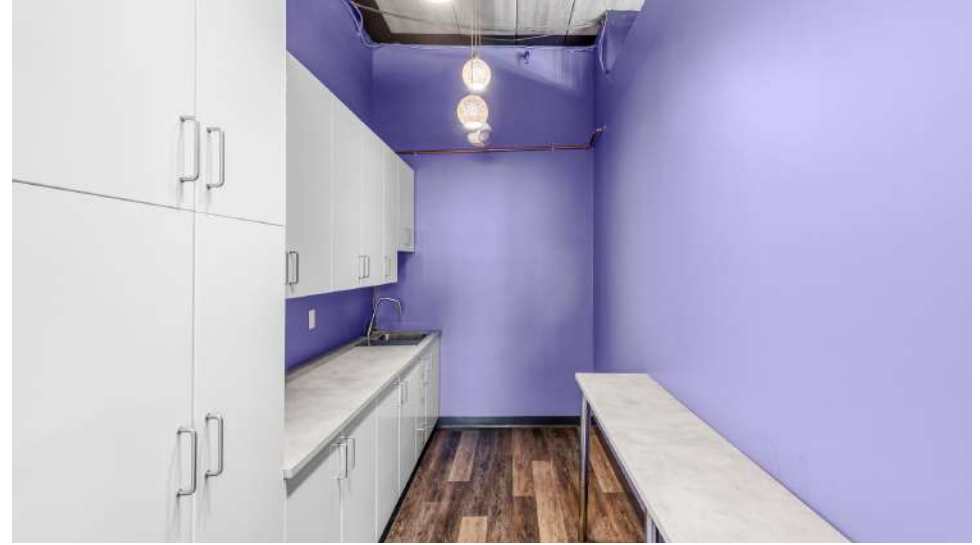
Ivan Alvarado | Commercial & Investment Broker | 612.806.2505 | ivan@resultscommercial.com

Hayden Hulsey, CCIM | Commercial & Investment Broker | 651.769.4826 | hayden@resultscommercial.com



PROPERTY PHOTOS

RETAIL OR OFFICE STOREFRONT AVAILABLE
360 UNIVERSITY AVE W, SAINT PAUL, MN 55103



Presented By:

Ivan Alvarado | Commercial & Investment Broker | 612.806.2505 | ivan@resultscommercial.com

Hayden Hulsey, CCIM | Commercial & Investment Broker | 651.769.4826 | hayden@resultscommercial.com



ADDITIONAL PHOTOS

RETAIL OR OFFICE STOREFRONT AVAILABLE
360 UNIVERSITY AVE W, SAINT PAUL, MN 55103



Presented By:

Ivan Alvarado | Commercial & Investment Broker | 612.806.2505 | ivan@resultscommercial.com

Hayden Hulsey, CCIM | Commercial & Investment Broker | 651.769.4826 | hayden@resultscommercial.com



PROPERTY PHOTOS

RETAIL OR OFFICE STOREFRONT AVAILABLE
360 UNIVERSITY AVE W, SAINT PAUL, MN 55103



Presented By:
Ivan Alvarado | Commercial & Investment Broker | 612.806.2505 | ivan@resultscommercial.com
Hayden Hulsey, CCIM | Commercial & Investment Broker | 651.769.4826 | hayden@resultscommercial.com



AERIAL PHOTOS OF PROPERTY

RETAIL OR OFFICE STOREFRONT AVAILABLE
360 UNIVERSITY AVE W, SAINT PAUL, MN 55103



Presented By:

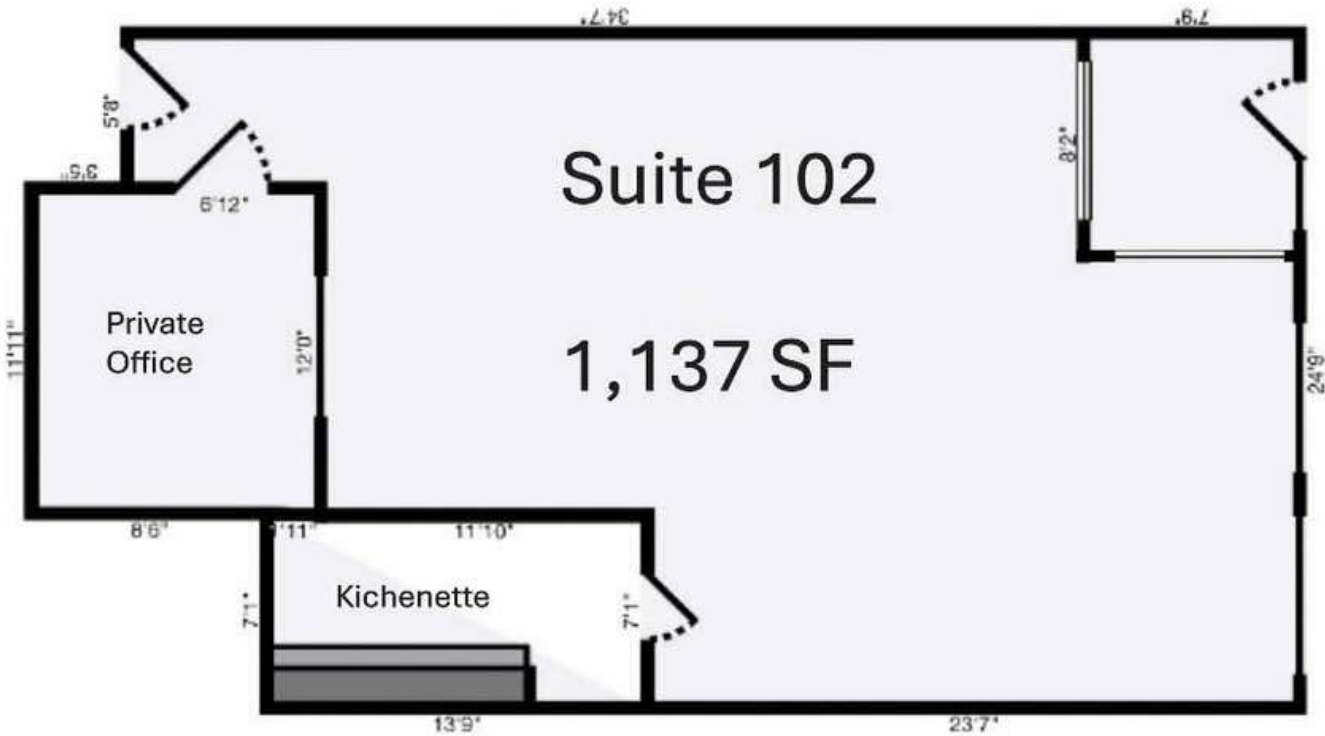
Ivan Alvarado | Commercial & Investment Broker | 612.806.2505 | ivan@resultscommercial.com

Hayden Hulsey, CCIM | Commercial & Investment Broker | 651.769.4826 | hayden@resultscommercial.com



FLOOR PLANS

RETAIL OR OFFICE STOREFRONT AVAILABLE
360 UNIVERSITY AVE W, SAINT PAUL, MN 55103



University Avenue

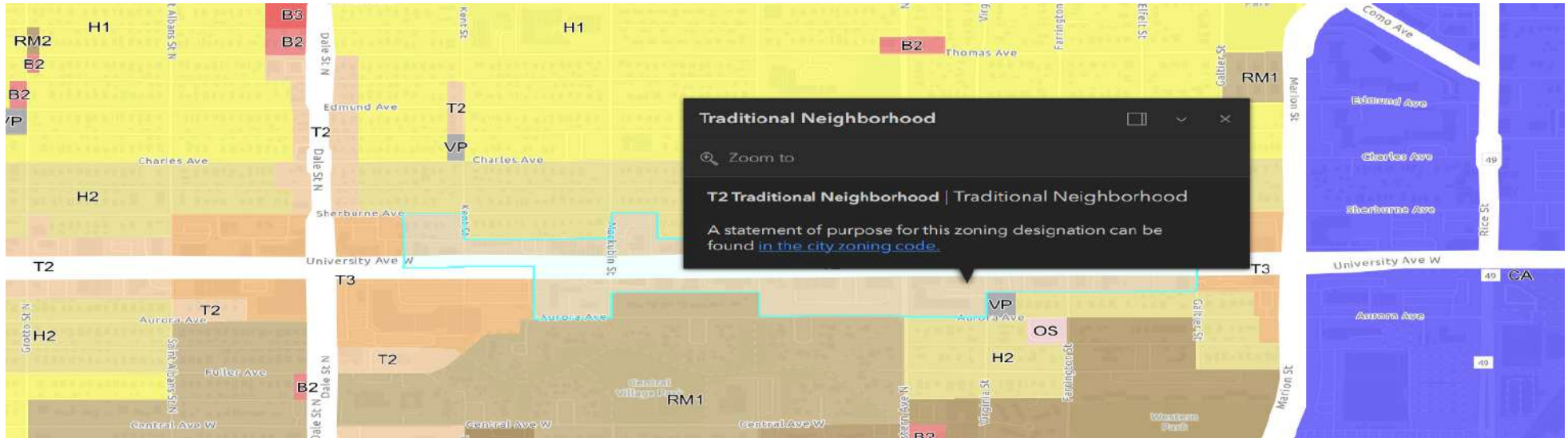
Presented By:

Ivan Alvarado | Commercial & Investment Broker | 612.806.2505 | ivan@resultscommercial.com
Hayden Hulsey, CCIM | Commercial & Investment Broker | 651.769.4826 | hayden@resultscommercial.com



ZONING INFORMATION

RETAIL OR OFFICE STOREFRONT AVAILABLE
360 UNIVERSITY AVE W, SAINT PAUL, MN 55103



T2 - TRADITIONAL NEIGHBORHOOD

Permitted Uses: One-family dwelling, Two-family dwelling, cluster development, multiple-family dwelling, housing for the elderly, home occupation, live-work unit, mixed residential and commercial use, adult care home, dormitory, emergency/housing facility, foster home, fraternity, sorority, shelter for battered persons, sober house, supportive housing facility, club, noncommercial , college, university, seminary, or similar institution of higher learning, community center, day care, homeless service facility, museum public library, public and private park, playground, religious institution, school, primary & secondary, trade school, arts school, dance school, antenna, cellular telephone, municipal building or use, solar energy generation facility, community, general office, studio, general retail, service business (general), service business with showroom or workshop, animal day care, artist's studios, business sales and services, cannabis retail, dry cleaning, commercial laundry, farmers market, garden center, outdoor, mortuary, funeral home, outdoor uses, commercial, tattoo shop, tobacco products shops, veterinary clinic, bar, brew on premises store, coffee shop, tea house, restaurant, restaurant (fast food), bed and breakfast residence, hotel, short term rental dwelling unit, health/sports club, theater, assembly hall, agriculture, brewery (craft), distillery (craft), limited production and processing, printing and publishing, winery (craft), accessory use, dwelling unit (accessory), micro-unit accessory to a religious institution.

Presented By:

Ivan Alvarado | Commercial & Investment Broker | 612.806.2505 | ivan@resultscommercial.com

Hayden Hulsey, CCIM | Commercial & Investment Broker | 651.769.4826 | hayden@resultscommercial.com



PARKING AND TRANSPORTATION

RETAIL OR OFFICE STOREFRONT AVAILABLE
360 UNIVERSITY AVE W, SAINT PAUL, MN 55103



TRANSPORTATION

Metro Transit Bus Line

Dale St & University Ave: 65

Rice St & University Ave: 3 , 62 , 67

Metro Transit Green Line

Western Ave Station

For more information:

Metro Transit: <https://www.metrotransit.org/stops-stations>

Presented By:

Ivan Alvarado | Commercial & Investment Broker | 612.806.2505 | ivan@resultscommercial.com

Hayden Hulsey, CCIM | Commercial & Investment Broker | 651.769.4826 | hayden@resultscommercial.com



RETAILER MAP

RETAIL OR OFFICE STOREFRONT AVAILABLE
360 UNIVERSITY AVE W, SAINT PAUL, MN 55103



Presented By:

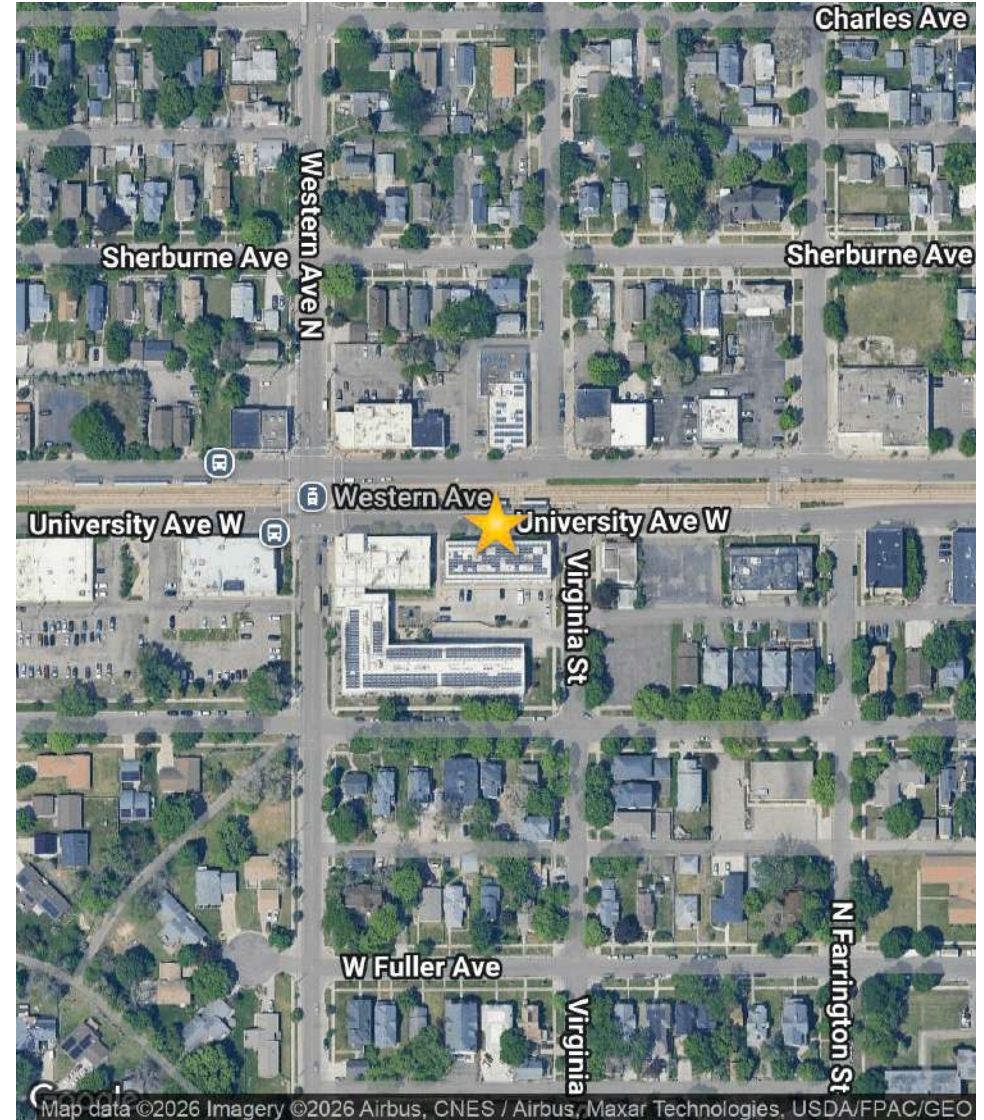
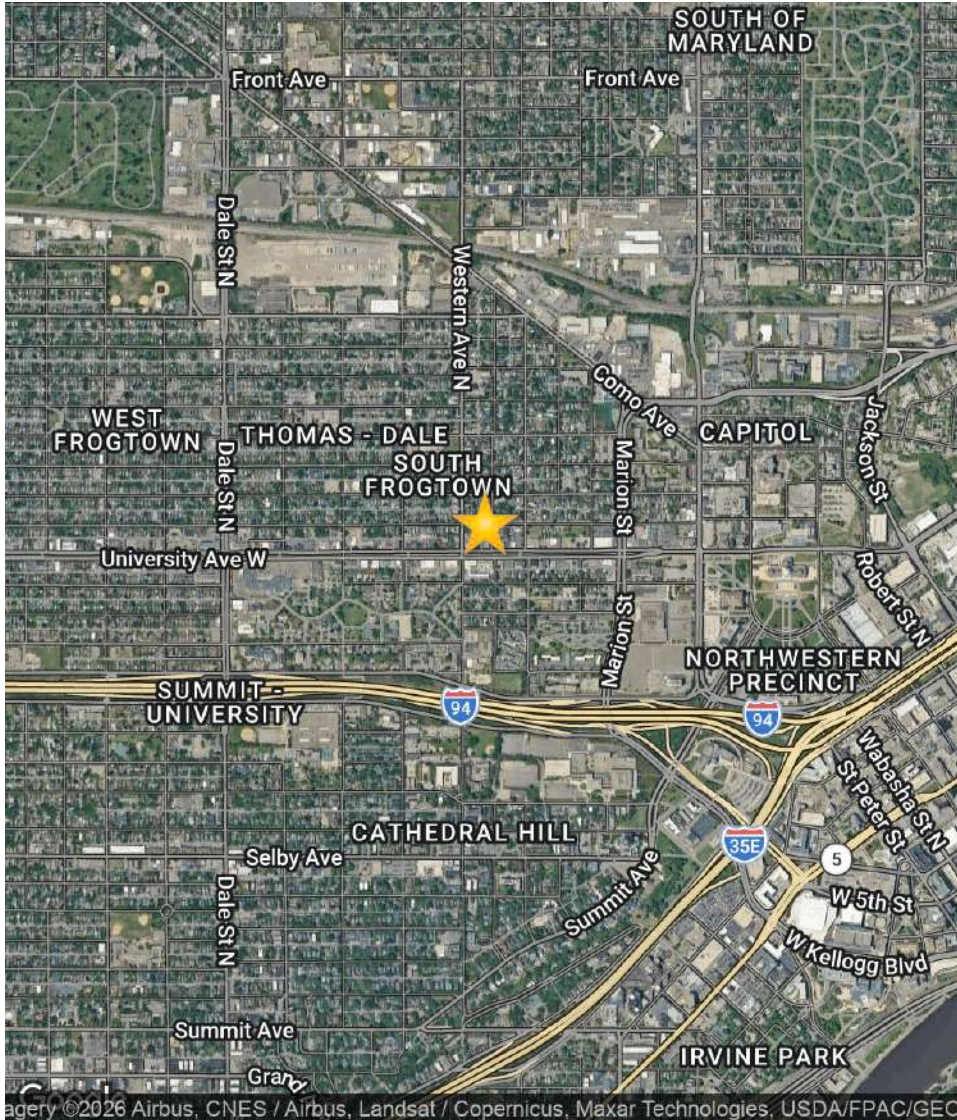
Ivan Alvarado | Commercial & Investment Broker | 612.806.2505 | ivan@resultscommercial.com

Hayden Hulsey, CCIM | Commercial & Investment Broker | 651.769.4826 | hayden@resultscommercial.com



LOCATION MAP

RETAIL OR OFFICE STOREFRONT AVAILABLE
360 UNIVERSITY AVE W, SAINT PAUL, MN 55103



Presented By:

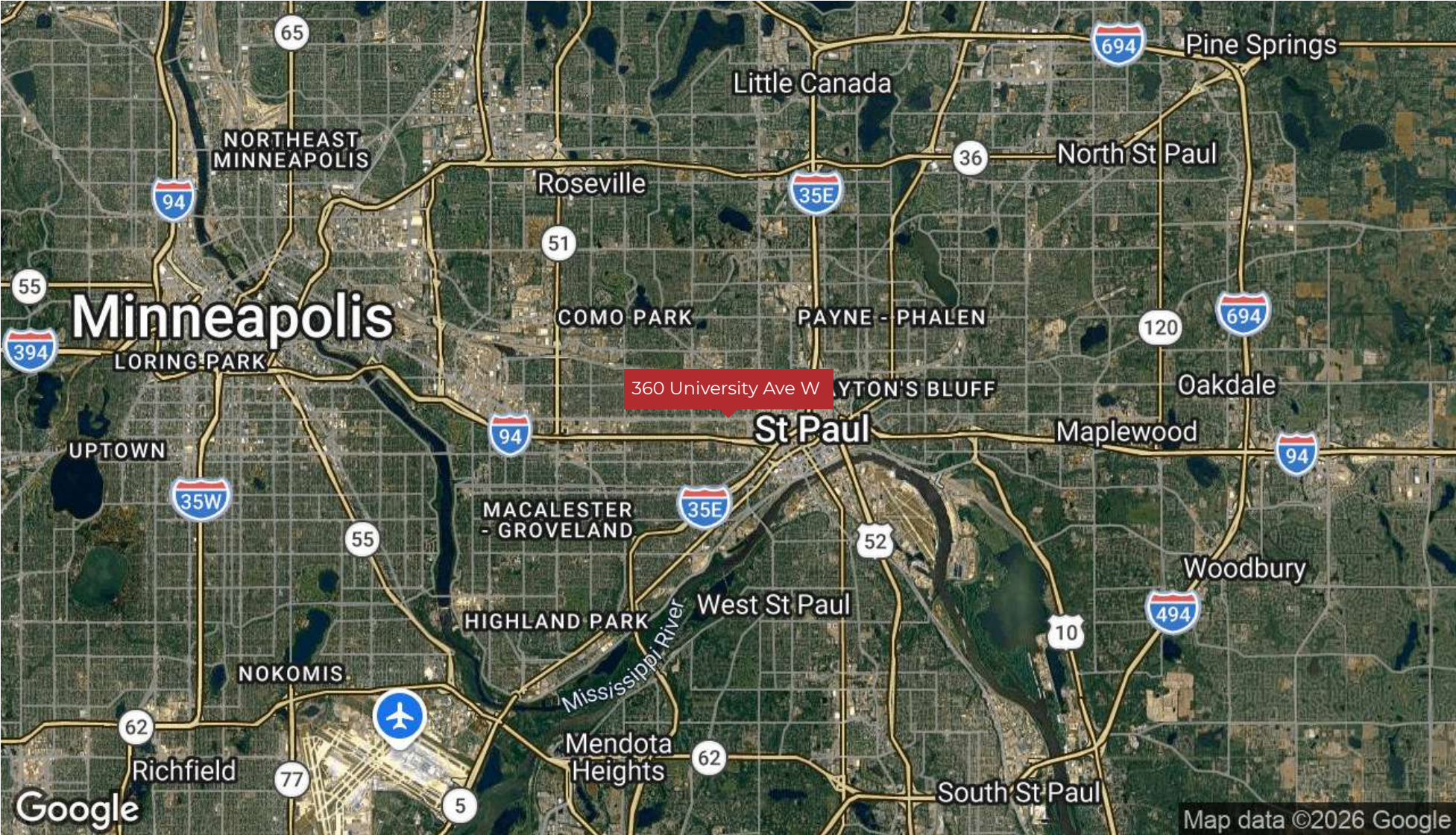
Ivan Alvarado | Commercial & Investment Broker | 612.806.2505 | ivan@resultscommercial.com

Hayden Hulsey, CCIM | Commercial & Investment Broker | 651.769.4826 | hayden@resultscommercial.com



REGIONAL MAP

RETAIL OR OFFICE STOREFRONT AVAILABLE
360 UNIVERSITY AVE W, SAINT PAUL, MN 55103



Presented By:

Ivan Alvarado | Commercial & Investment Broker | 612.806.2505 | ivan@resultscommercial.com

Hayden Hulsey, CCIM | Commercial & Investment Broker | 651.769.4826 | hayden@resultscommercial.com



DEMOGRAPHICS MAP & REPORT

RETAIL OR OFFICE STOREFRONT AVAILABLE
360 UNIVERSITY AVE W, SAINT PAUL, MN 55103

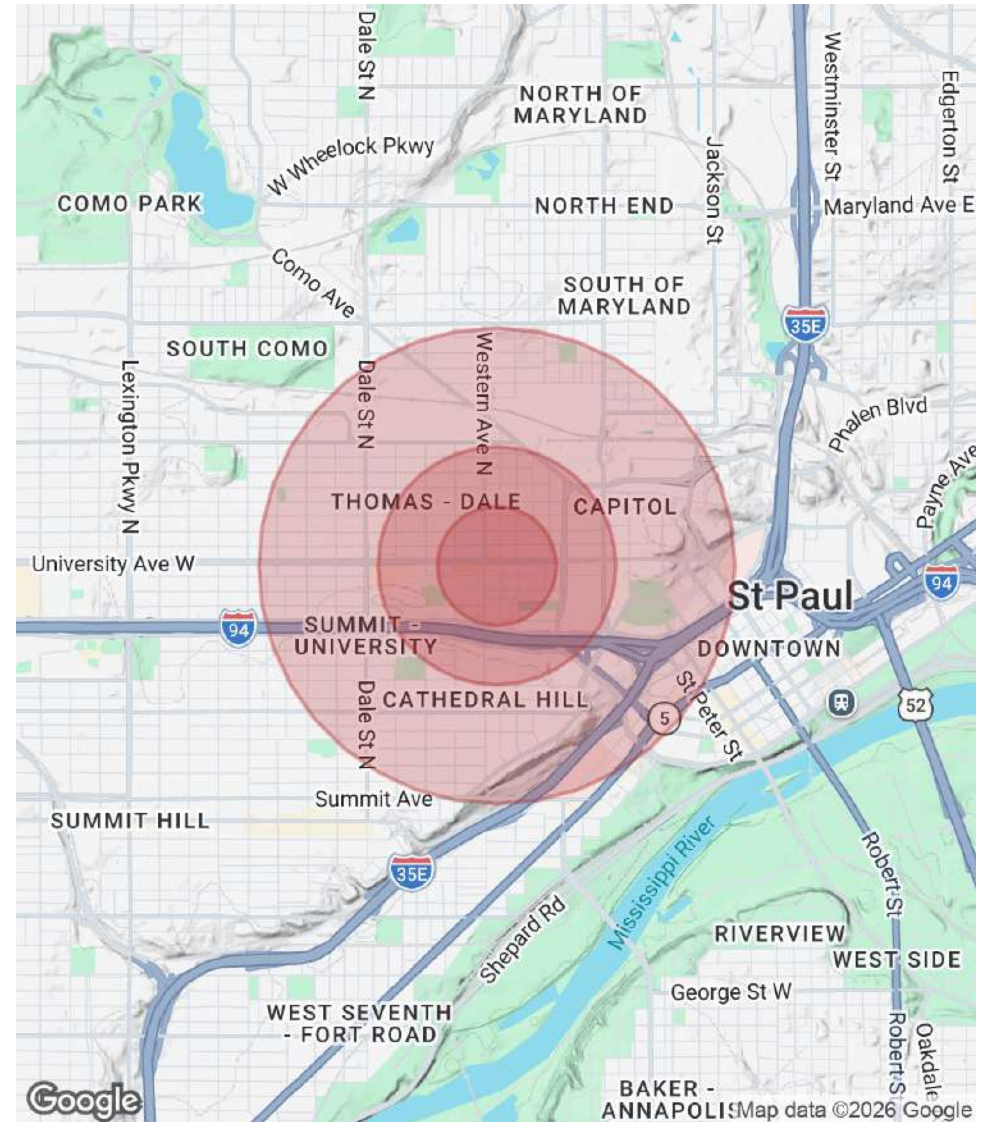
POPULATION

	0.25 MILES	0.5 MILES	1 MILE
Total Population	2,537	8,793	27,038
Average Age	28.2	29.7	33.3
Average Age (Male)	29.4	27.5	32.3
Average Age (Female)	29.7	32.8	35.0

HOUSEHOLDS & INCOME

	0.25 MILES	0.5 MILES	1 MILE
Total Households	819	3,047	10,852
# of Persons per HH	3.1	2.9	2.5
Average HH Income	\$49,326	\$54,159	\$84,393
Average House Value	\$311,853	\$286,164	\$297,773

2023 American Community Survey (ACS)



Presented By:

Ivan Alvarado | Commercial & Investment Broker | 612.806.2505 | ivan@resultscommercial.com

Hayden Hulsey, CCIM | Commercial & Investment Broker | 651.769.4826 | hayden@resultscommercial.com



MEET THE TEAM

RETAIL OR OFFICE STOREFRONT AVAILABLE
360 UNIVERSITY AVE W, SAINT PAUL, MN 55103



IVAN ALVARADO

Commercial & Investment Broker

Direct: 612.806.2505
ivan@resultscommercial.com



HAYDEN HULSEY, CCIM

Commercial & Investment Broker

Direct: 651.769.4826 **Cell:** 651.769.4826
hayden@resultscommercial.com

Presented By:

Ivan Alvarado | Commercial & Investment Broker | 612.806.2505 | ivan@resultscommercial.com

Hayden Hulsey, CCIM | Commercial & Investment Broker | 651.769.4826 | hayden@resultscommercial.com

