

2,078 SF FOR LEASE



EXECUTIVE BUSINESS CENTER

5565 Red Bird Center Drive, Suite 120 | Dallas, Texas 75237

PROPERTY HIGHLIGHTS

- 2,078 SF available
- 825 SF warehouse
- 16' clear height
- 100% sprinklered
- One (1) overhead roll-up door
- Ample parking
- Easy access to major thoroughfares: US-67, I-20, and I-35E
- Adjacent to Dallas Executive Airport



CONTACT



Canon Shoults, SIOR | 972.280.8328 | cshoults@holtlunsford.com
Luke Floyd | 972.585.5109 | lfloyd@holtlunsford.com



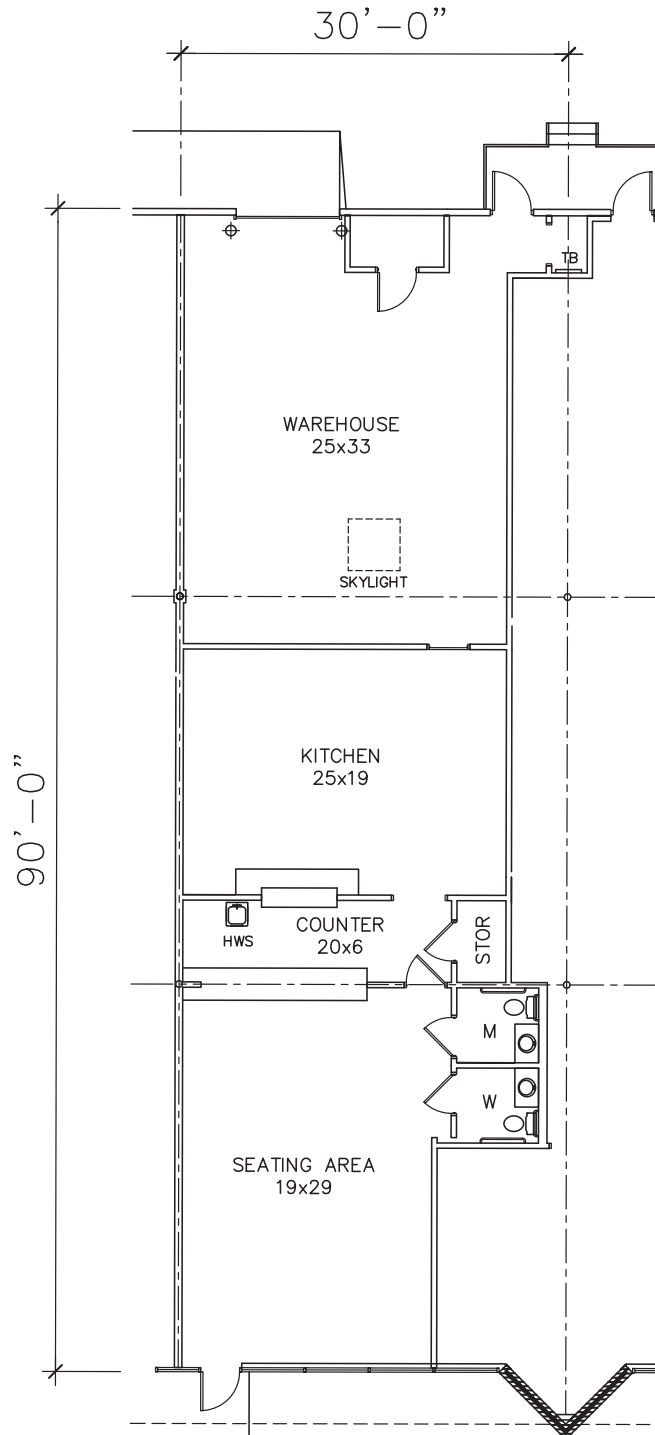
William Shagets
Regional Director
214.239.5114 | williams@sealynet.com

2,078 SF FOR LEASE

EXECUTIVE BUSINESS CENTER

5565 Red Bird Center Drive, Suite 120 | Dallas, Texas 75237

FLOOR PLAN



CONTACT



Canon Shoults, SIOR | 972.280.8328 | cshoults@holtlunsford.com
Luke Floyd | 972.585.5109 | lfloyd@holtlunsford.com



William Shagets
Regional Director
214.239.5114 | williams@sealynet.com

