

2129 SQFT. \$28 + NNN

3737 WILLIAMS DRIVE

GEORGETOWN TX, 78628



PROPERTY DETAILS

FEATURES:

For lease: a 2,129 square foot standalone dental office space located on Williams Drive, conveniently positioned between the intersections of Serenada and Wagon Wheel Trail. The floor plan includes four operator rooms, one staff office, a kitchenette, and three bathrooms. The spacious reception area boasts an appealing architectural design. Additionally, the office is fully plumbed for nitrous oxide and oxygen in each operator room.

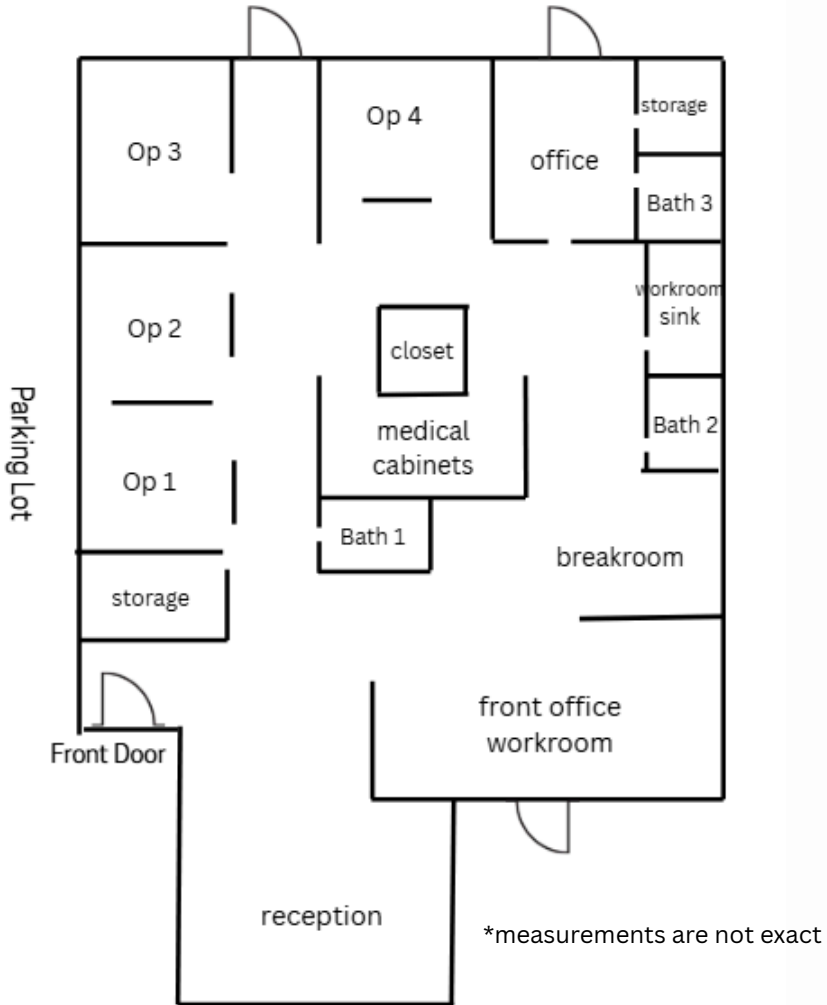
2129 SQFT - Available

\$28 Base Rent + \$10.15 NNN

Cayce Rigger | Agent | 512.993.5522 | cayce@turnerprop.com

This property is being offered for sale in its "AS IS, WHERE IS" condition. The Broker is submitting the attached information in its capacity as a representative of the owner. The material contained herein was obtained from sources deemed reliable. Turner Commercial Properties makes no warranty, express or implied, as to the accuracy of the information contained herein. All presented information submitted is subject to change without notice as regards price, terms or availability. Nothing contained herein should be relied upon as a promise or representation as to the future. Recipients should conduct their own investigation and analysis of the transaction described herein.

Floor Plan



AVAILBILTY:

2129 SQFT - Available September 2025

\$28 Base Rent + \$10.15 NNN

