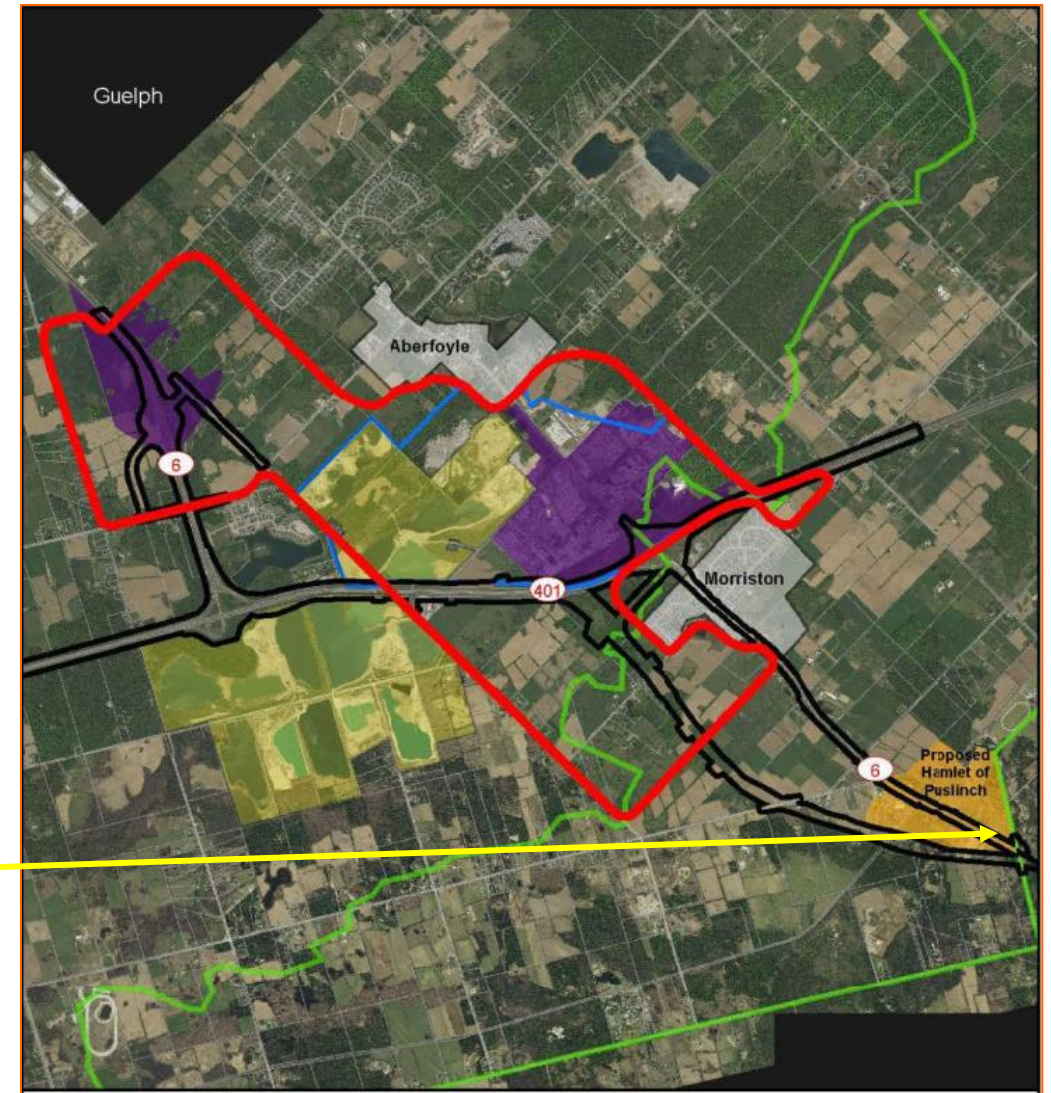
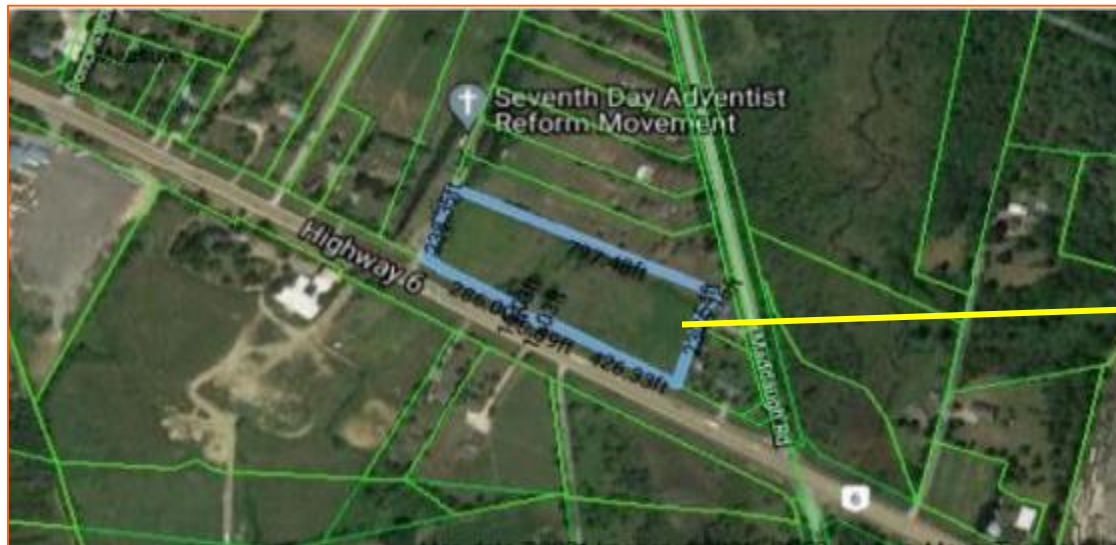
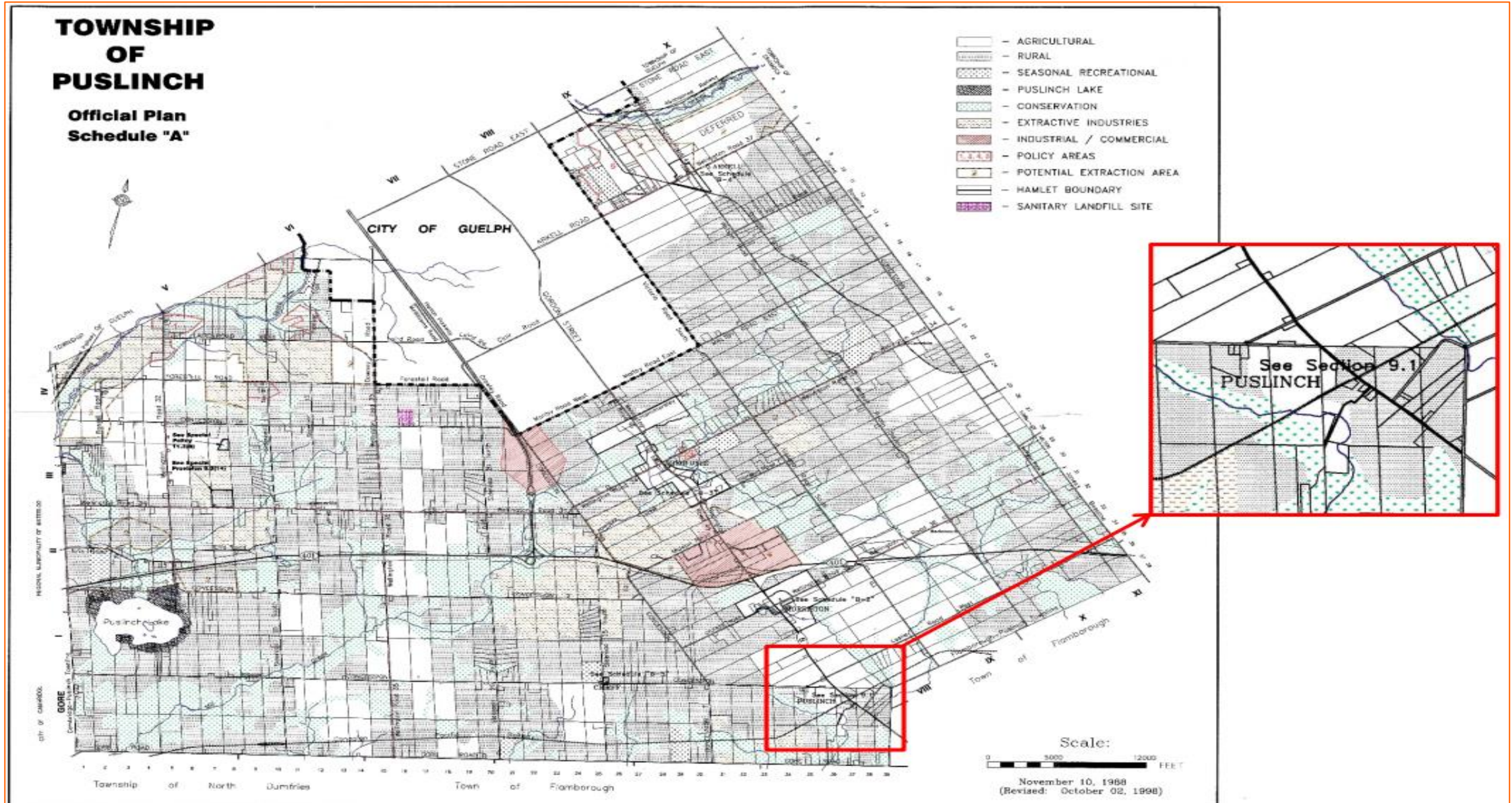


4.59 ACRES LAND - 800 +/- FEET FRONTAGE - EXISTING RESIDENCE UNOCCUPIED Wellington County Official Plan Growth Expansion located at the Highway # 6 Bypass Cloverleaf

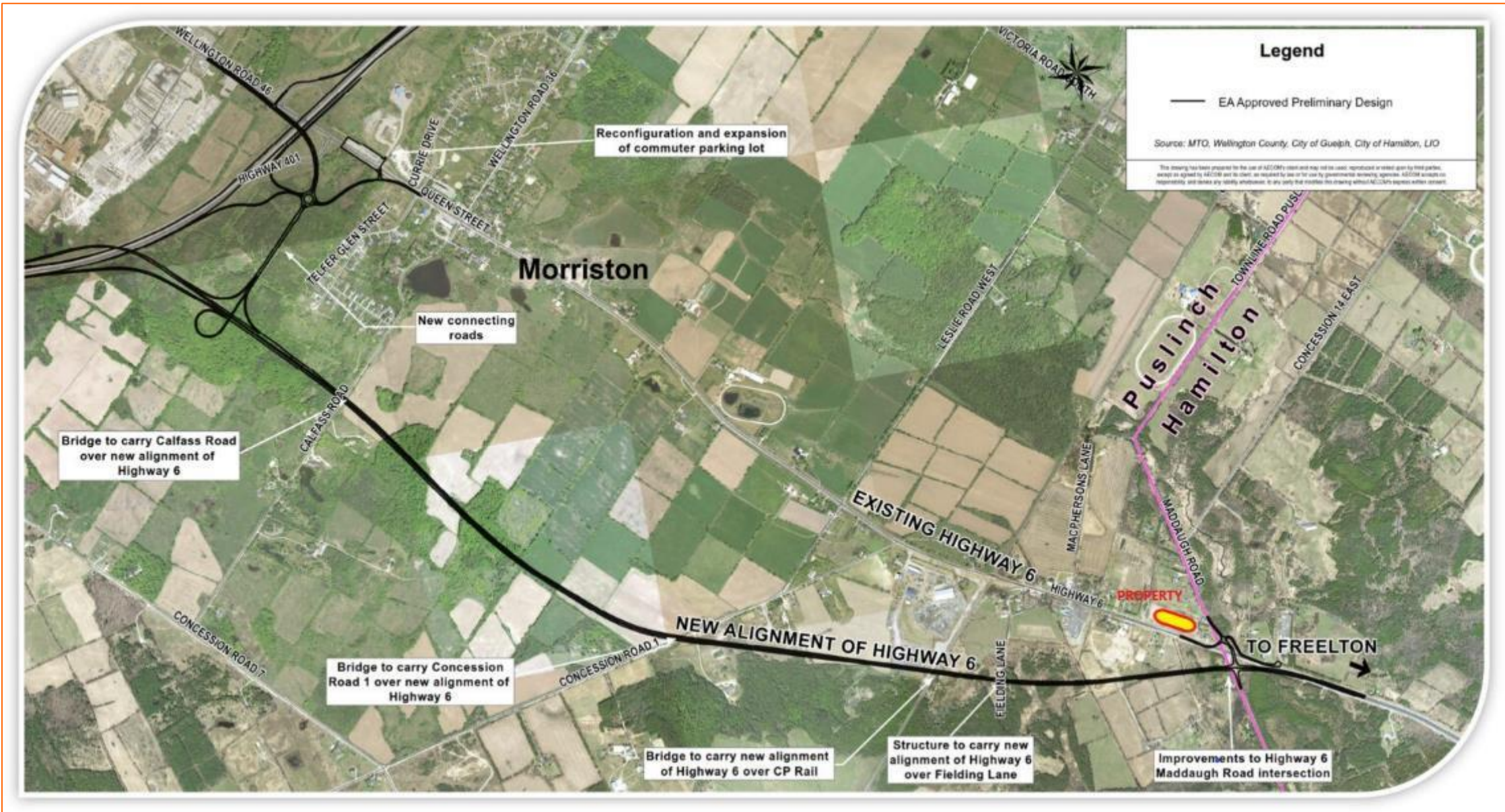
<https://www.wellington.ca/en/resident-services/resources/Planning/Official-Plan/Official-Plan-Review/PD2021-25-County-Official-Plan-Review---OPA119-County-Growth-Structure.pdf>



Copy right Commercial Focus Realty Inc., Brokerage. The information contained herein (the "information") is intended for informational purposes only and should not be relied upon by recipients hereof. Although the information is believed to be correct, its accuracy, correctness or completeness cannot be guaranteed and has not been verified by either Commercial Focus Realty Inc., Brokerage (CFR) or any of its affiliates (CFR and its affiliates are collectively referred to herein as "CFR"). CFR neither guarantees, warrants nor assumes any responsibility or liability of any kind with respect to the accuracy, correctness, completeness, or suitability of, or decisions based upon or in connection with, the information. The recipient of the information should take such steps as the recipient may deem appropriate with respect to using the information. The information may change and property described herein may be withdrawn from the market at any time without notice or obligation of any kind on the part of CFR. The information is protected by copyright and shall be fully enforced.



Copy right Commercial Focus Realty Inc., Brokerage. The information contained herein (the "information") is intended for informational purposes only and should not be relied upon by recipients hereof. Although the information is believed to be correct, its accuracy, correctness or completeness cannot be guaranteed and has not been verified by either Commercial Focus Realty Inc., Brokerage (CFR) or any of its affiliates (CFR and its affiliates are collectively referred to herein as "CFR"). CFR neither guarantees, warrants nor assumes any responsibility or liability of any kind with respect to the accuracy, correctness, completeness, or suitability of, or decisions based upon or in connection with, the information. The recipient of the information should take such steps as the recipient may deem appropriate with respect to using the information. The information may change and property described herein may be withdrawn from the market at any time without notice or obligation of any kind on the part of CFR. The information is protected by copyright and shall be fully enforced.



Copy right Commercial Focus Realty Inc., Brokerage. The information contained herein (the "information") is intended for informational purposes only and should not be relied upon by recipients hereof. Although the information is believed to be correct, its accuracy, correctness or completeness cannot be guaranteed and has not been verified by either Commercial Focus Realty Inc., Brokerage (CFR) or any of its affiliates (CFR and its affiliates are collectively referred to herein as "CFR"). CFR neither guarantees, warrants nor assumes any responsibility or liability of any kind with respect to the accuracy, correctness, completeness, or suitability of, or decisions based upon or in connection with, the information. The recipient of the information should take such steps as the recipient may deem appropriate with respect to using the information. The information may change and property described herein may be withdrawn from the market at any time without notice or obligation of any kind on the part of CFR. The information is protected by copyright and shall be fully enforced.