



East Britt David Road Office Spaces

3878 E Britt David Rd
Columbus, Georgia 31909

Property Highlights

- Abundant parking for tenants and guests
- Easy accessibility to major roadways
- Versatile layout to accommodate various business needs
- Convenient location for staff and clients

Property Overview

3878 E Britt David Road is a recently updated office building with one available suite. The property offers ample parking for employees and customers, convenient access to major roadways, and a well-maintained exterior. Inside, the spacious and newly renovated interior provides a flexible canvas for creating a tailored workspace. This property presents a prime opportunity to establish your business in a sought-after location.

Offering Summary

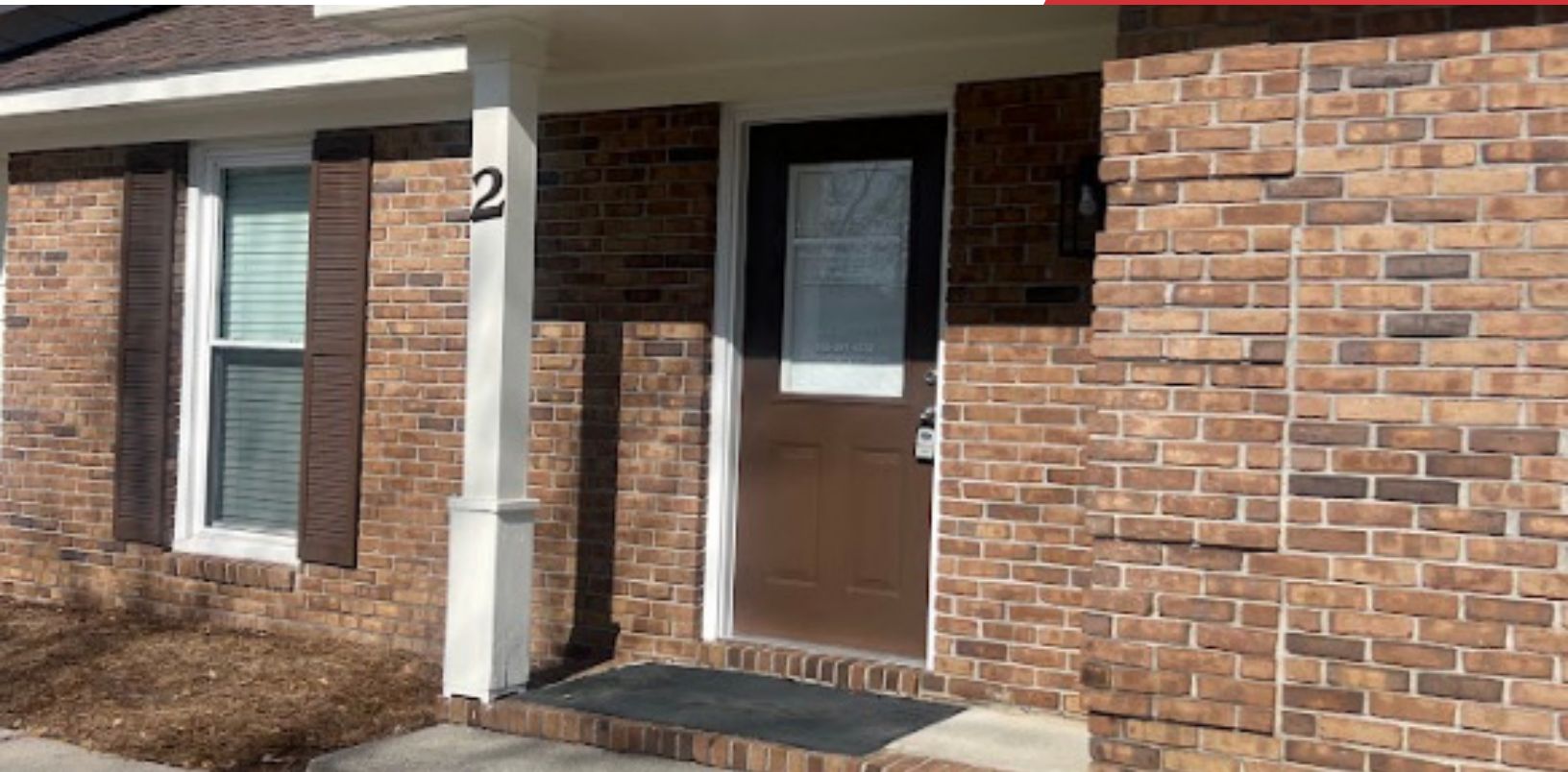
Lease Rate:	\$1,500 per month (MG)
Building Size:	4,050 SF
Available SF:	+/- 1,000 SF
Lot Size:	0.36 Acres

Demographics 0.3 Miles 0.5 Miles 1 Mile

Total Households	257	836	3,143
Total Population	558	1,782	6,973
Average HH Income	\$60,333	\$60,911	\$68,142

For More Information

Amy D. Gill, MICP, MRP
O: 706 660 5418 x1009
agill@g2cre.com | GA #381793



Lease Information

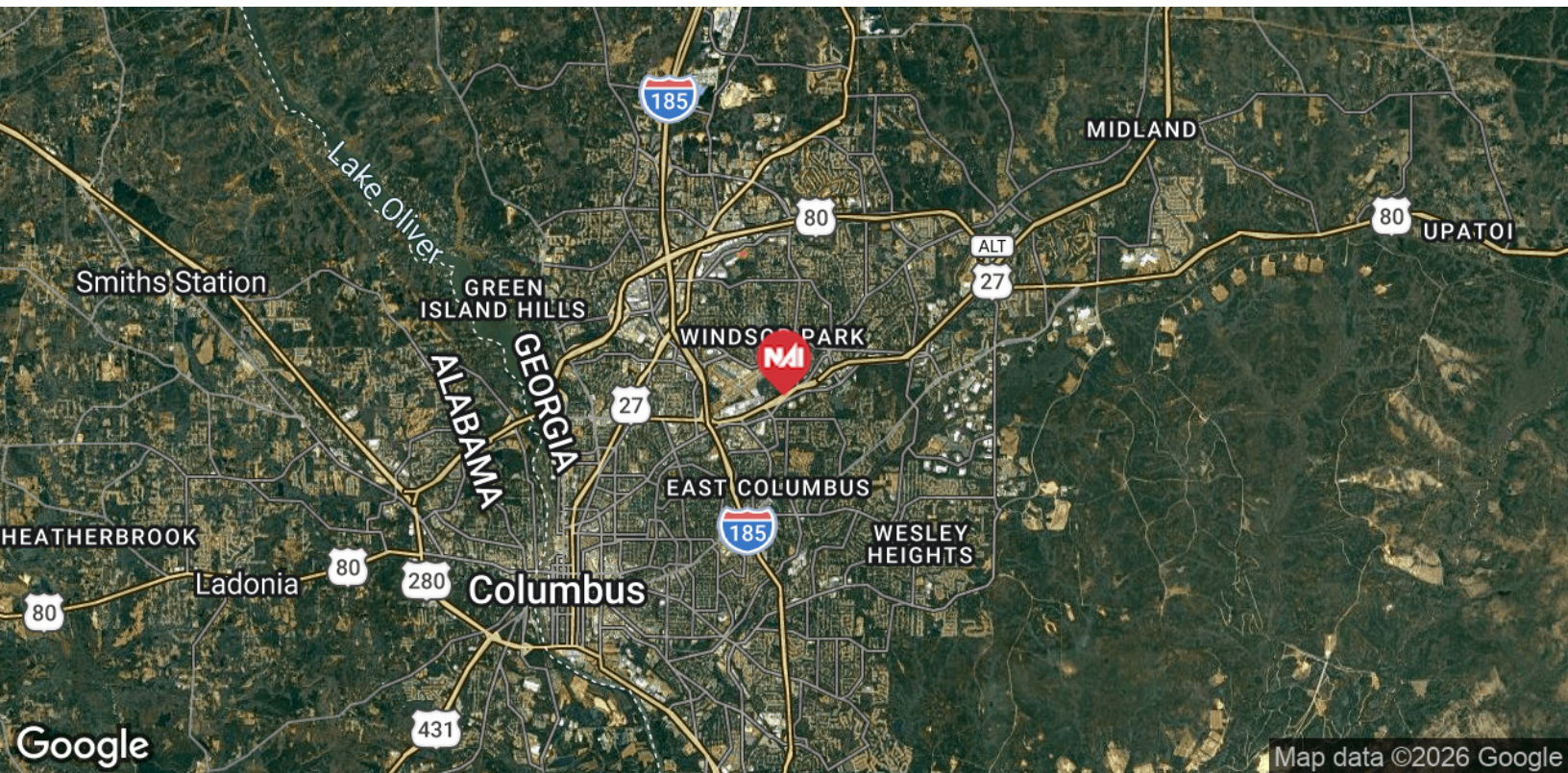
Lease Type:	MG	Lease Term:	Negotiable
Total Space:	1,000 SF	Lease Rate:	\$1,500 per month

Available Spaces

Suite Size (SF) Lease Type Lease Rate Description

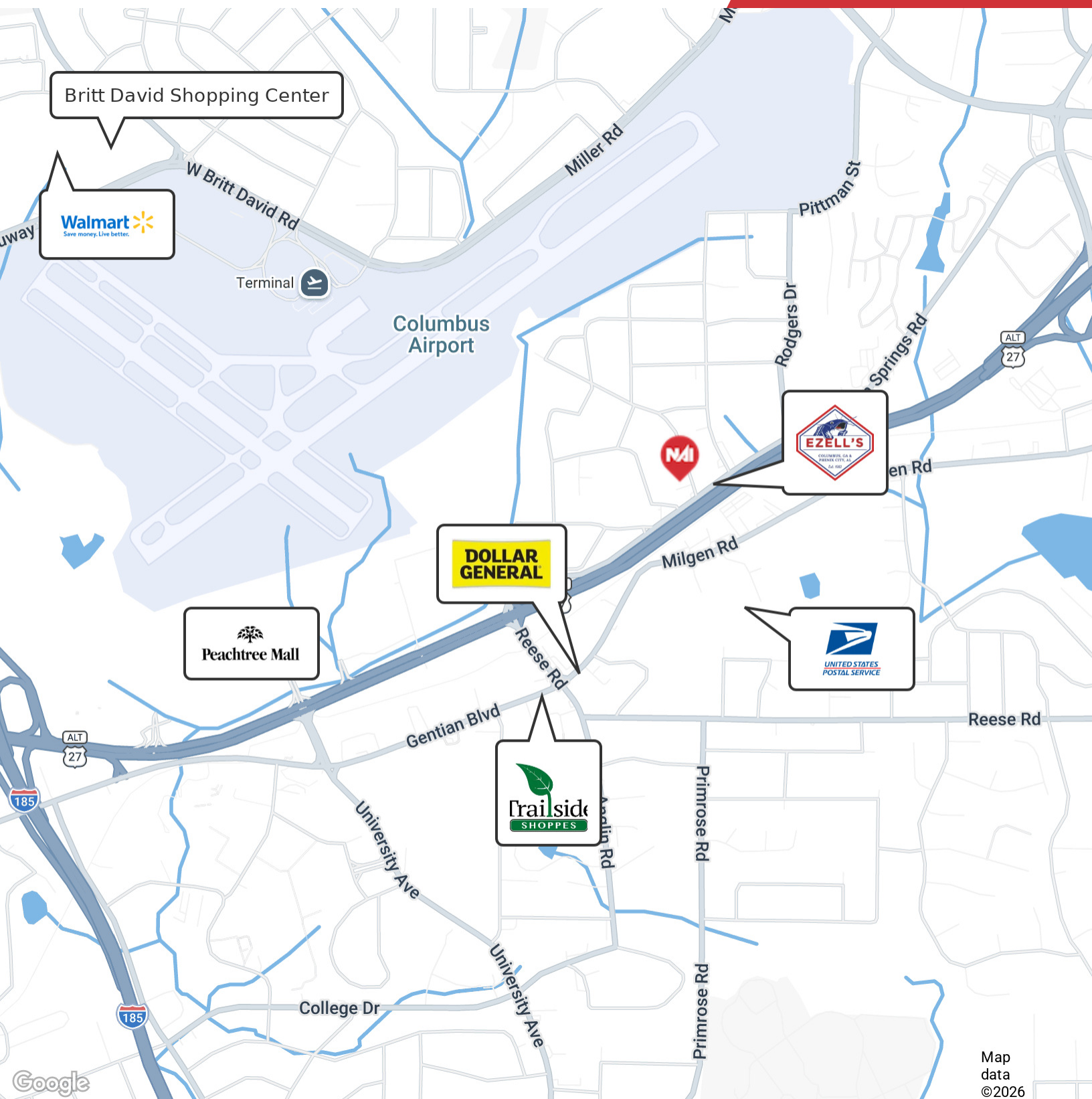
Suite Size (SF)	Lease Type	Lease Rate	Description
Suite 3 1,000 SF	Modified Gross	\$1,500 per month	Suite 3 is designed to accommodate various work-related needs with its mix of private offices, a flexible open area, a restroom, and a compact kitchen. Available 11/1/25.





We obtained the information above from sources we believe to be reliable. However, we have not verified its accuracy and make no guarantee, warranty or representation about it. It is submitted subject to the possibility of errors, omissions, change of price, rental or other conditions, prior sale, lease or financing, or withdrawal without notice. We include projections, opinions, assumptions or estimates for example only, and they may not represent current or future performance of the property. You and your tax and legal advisors should conduct your own investigation of the property and transaction.

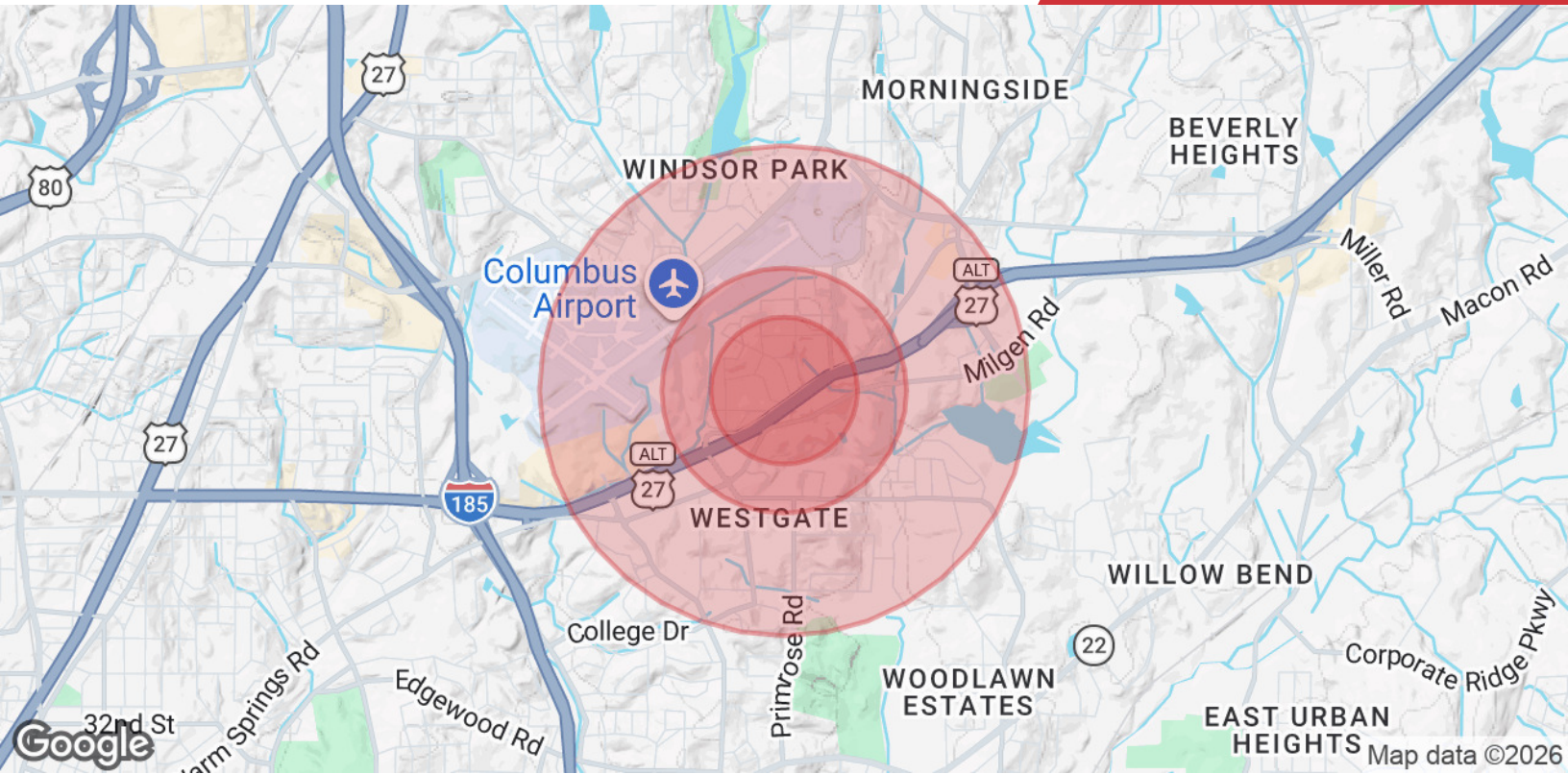
Post Office Box 4529
Columbus, GA 31904
706 660 5418 tel
G2cre.com



Map data ©2026

We obtained the information above from sources we believe to be reliable. However, we have not verified its accuracy and make no guarantee, warranty or representation about it. It is submitted subject to the possibility of errors, omissions, change of price, rental or other conditions, prior sale, lease or financing, or withdrawal without notice. We include projections, opinions, assumptions or estimates for example only, and they may not represent current or future performance of the property. You and your tax and legal advisors should conduct your own investigation of the property and transaction.

Post Office Box 4529
Columbus, GA 31904
706 660 5418 tel
G2cre.com



Population

	0.3 Miles	0.5 Miles	1 Mile
Total Population	558	1,782	6,973
Average Age	35	35	37
Average Age (Male)	33	34	36
Average Age (Female)	36	37	39

Households & Income

	0.3 Miles	0.5 Miles	1 Mile
Total Households	257	836	3,143
# of Persons per HH	2.2	2.1	2.2
Average HH Income	\$60,333	\$60,911	\$68,142
Average House Value	\$185,570	\$198,893	\$224,990

2020 American Community Survey (ACS)

Owner Disclosure Notice

Member(s) of the property ownership are licensed real estate professionals in the State of Georgia, and hold an ownership interest in the property being advertised.