



# AGRICULTURAL LAND FOR SALE

6501 Hwy 60 East, Bartow, FL 33830

Contact: Michael Castrilli  
Vice President of Brokerage Services

E: Michael@FCPG.com  
P: 407.872.0177 ext.130

Contact: Trey Gravenstein  
Vice President of Brokerage Services

E: Trey@FCPG.com  
P: 407.872.0177 ext.119

**For Sale: \$700,000**

Availability: ± 3.36 Acres

± 960 SF Office Building



Positioned in the rapidly developing Bartow area, this property is surrounded by ongoing residential and commercial growth

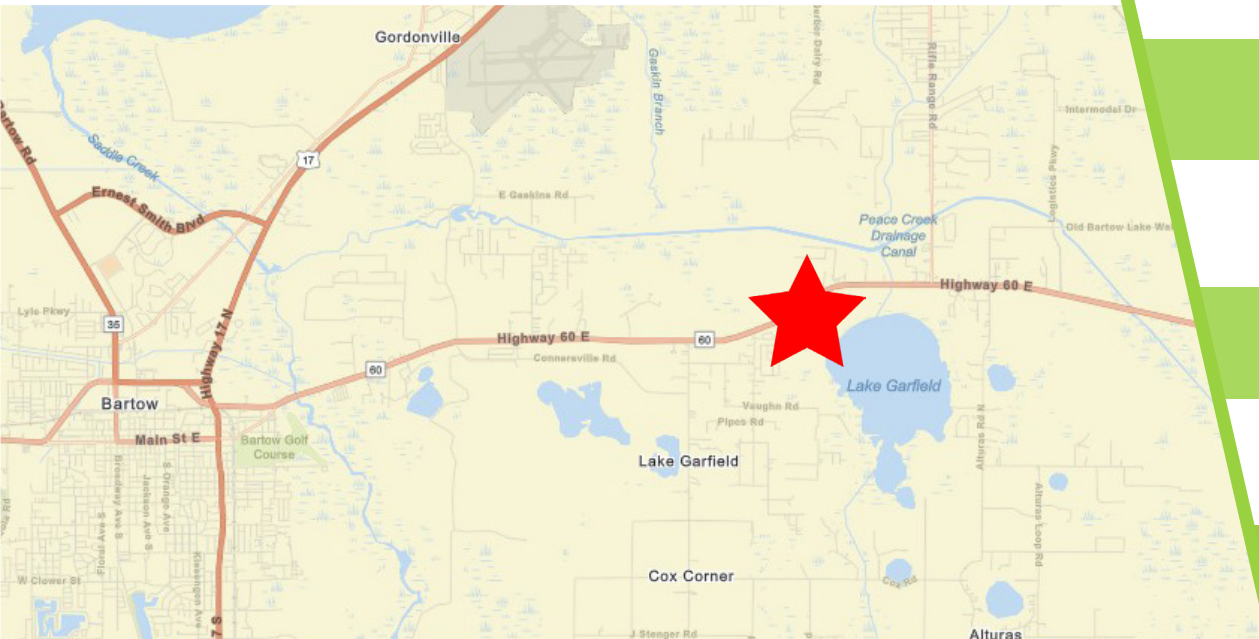
With direct frontage along Highway 60, the property benefits from high visibility and strong traffic exposure

AE (Agricultural/Estates) zoning supports rural and agricultural uses today, while also offering future upside potential for rezoning as the corridor continues to evolve

Site includes a 960 SF office building, allowing for immediate operational setup, administrative use, or conversion to support a variety of business needs

Property is already equipped with on-site fresh water access, making it ideal for continued agricultural use such as a tree farm, landscaping business, or horticultural operation

Situated on 3.36 acres, this expansive parcel offers ample room for a variety of uses providing flexibility for both owner-users and investors



## DEMOGRAPHICS

**2025**      **5Mins**      **10Mins**      **15Mins**

Total Population      3,423      21,256      68,996

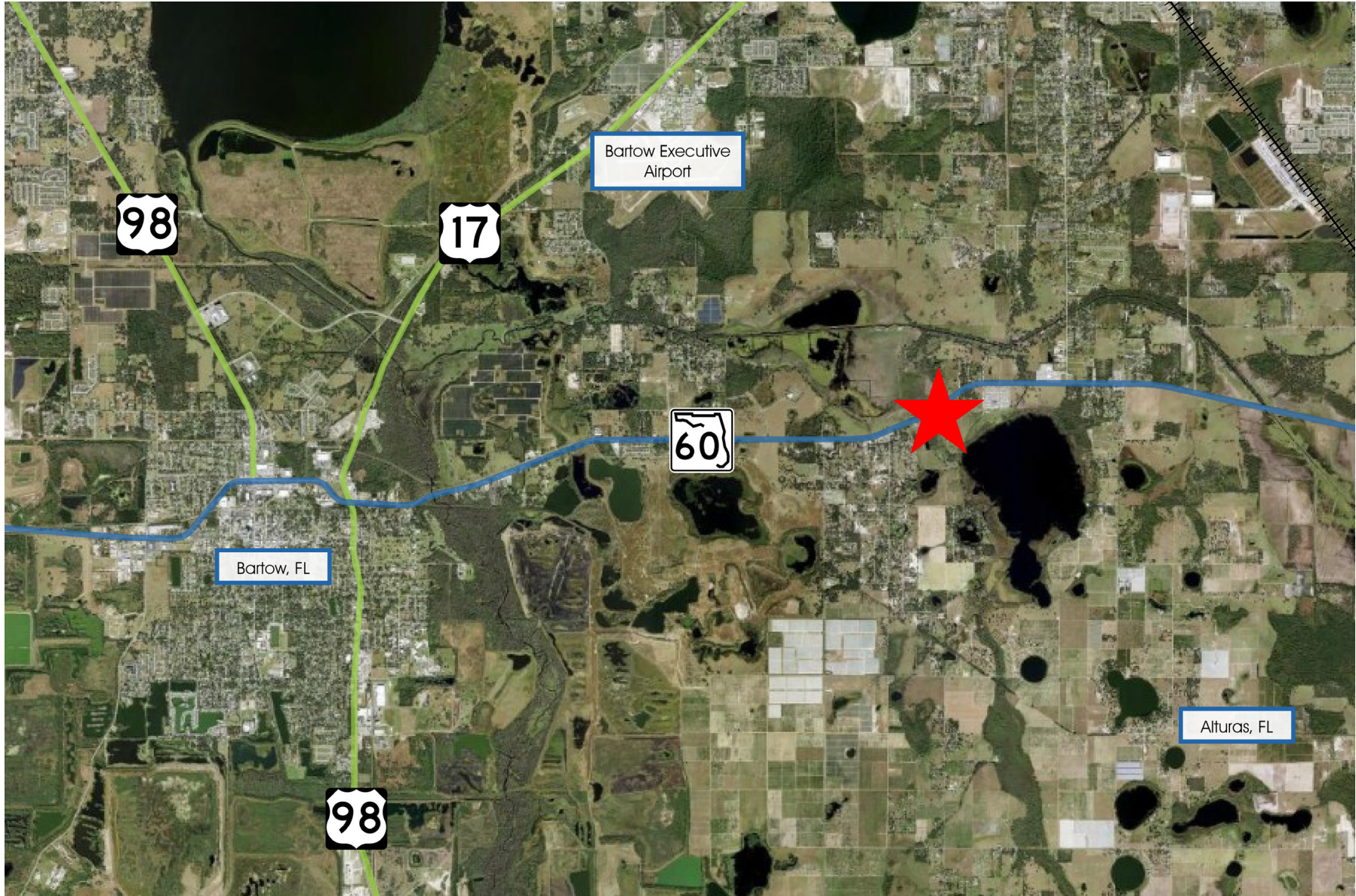
Average HH Income      \$82,519      \$74,491      \$86,763

Total Households      1,090      7,302      25,346

615 E. Colonial Dr., Orlando, FL 32803    Phone: 407.872.0209    www.FCPG.com

Information furnished regarding the subject property is believed to be accurate, but no guarantee or representation is made. References to square footage are approximate. This offering is subject to errors, omissions, prior sale or lease or withdrawal without notice. ©2026 First Capital Property Group, Licensed Real Estate Brokers & Managers.

# THE NEIGHBORHOOD



■ 615 E. Colonial Dr., Orlando, FL 32803 ■ Phone: 407.872.0209 ■ [www.FCPG.com](http://www.FCPG.com) ■

Information furnished regarding the subject property is believed to be accurate, but no guarantee or representation is made. References to square footage are approximate. This offering is subject to errors, omissions, prior sale or lease or withdrawal without notice. ©2026 First Capital Property Group, Licensed Real Estate Brokers & Managers.

# PARCEL

Frontage:  $\pm 176'$  (HWY 60 E)  
Depth:  $\pm 210'$   
Parcel ID: 26-29-31-000000-021040



■ 615 E. Colonial Dr., Orlando, FL 32803 ■ Phone: 407.872.0209 ■ [www.FCPG.com](http://www.FCPG.com) ■

Information furnished regarding the subject property is believed to be accurate, but no guarantee or representation is made. References to square footage are approximate. This offering is subject to errors, omissions, prior sale or lease or withdrawal without notice. ©2026 First Capital Property Group, Licensed Real Estate Brokers & Managers.

# BARTOW, FL MARKET HIGHLIGHTS

## DOWNTOWN HISTORIC DISTRICT

The Main Street Bartow community offers a variety of restaurants with local and international tastes, boutiques, cafe's, antiques, salons, gift and home decor stores intermingled with professional services. Main Street Bartow is also the home of Polk County's History Center, housed in the Historic Polk County Courthouse, which was built in 1908. Bartow is the capital city of Polk County which has more than 585,000 resident's county wide. Thousands of government and private business employees commute to Bartow, daily. Bartow is 40 miles east of Tampa, and 60 miles southwest of Orlando. It is strategically positioned at the intersection of US Hwy 98 and State Road 60. The core of Bartow's economy is still citrus, cattle, and phosphate.

## MARKET DRIVERS

The largest industries in Bartow are Government, Health Care and Social Assistance. Bartow Regional Medical Center has provided exceptional medical care to the community for 95 years. Bartow Regional was named a Top 100 Hospital in the United Sated by IBM Watson Health.

Bartow is home to the majority of Polk County's major administrative agencies and facilities including the Polk County Courthouse and the Department of Transportation. Other large industries in the area include agriculture, forestry, fishing and hunting, and Public administration.



## DEMOGRAPHICS



2.37%  
2024 - 2029  
POPULATION GROWTH



38.2  
MEDIAN AGE



27,727  
TOTAL DAYTIME POPULATION



14,999  
TOTAL EMPLOYEES

