

**CAPITAL COMMERCIAL**

**REAL ESTATE BROKERAGE**

Donna Ballentine | Jeff Shilkaitis

Direct: 847-254-1215 | Direct: 630-774-9111

**Brokerage team**

[www.CapitalCommercialRE.com](http://www.CapitalCommercialRE.com)

**One Space Left!**



**FOR LEASE**

**Westbank Financial Center — Office Space  
1112 S Washington Street Naperville | Illinois**

### Property Summary

**Available Spaces:** | Suite 119 - 1,300 SF

**Lease Rate:** | \$24.00 - Gross

**Highlights:** | 140 Parking Spaces | Additional storage available | Medical and office space available | Prime Naperville location, minutes from Downtown | Signage Available | Excellent Demographics | Perfect for attorneys, medical, dental, financial advisors and other small businesses.

### FOR LEASE INFORMATION:

**Jeff Shilkaitis** | Principal Broker

Direct: 630-774-9111

[Jeff@CapitalCommercialRE.com](mailto:Jeff@CapitalCommercialRE.com)

**Donna Ballentine** | Principal Broker

Direct: 847-254-1215

[Donna@CapitalCommercialRE.com](mailto:Donna@CapitalCommercialRE.com)

**CAPITAL COMMERCIAL**

**REAL ESTATE BROKERAGE**

Capital Commercial Real Estate Brokerage, PLLC

114 N Washington - Suite 6, Naperville, IL 60540

**CAPITAL COMMERCIAL**

**REAL ESTATE BROKERAGE**

Donna Ballentine | Jeff Shilkaitis

Direct: 847-254-1215 | Direct: 630-774-9111

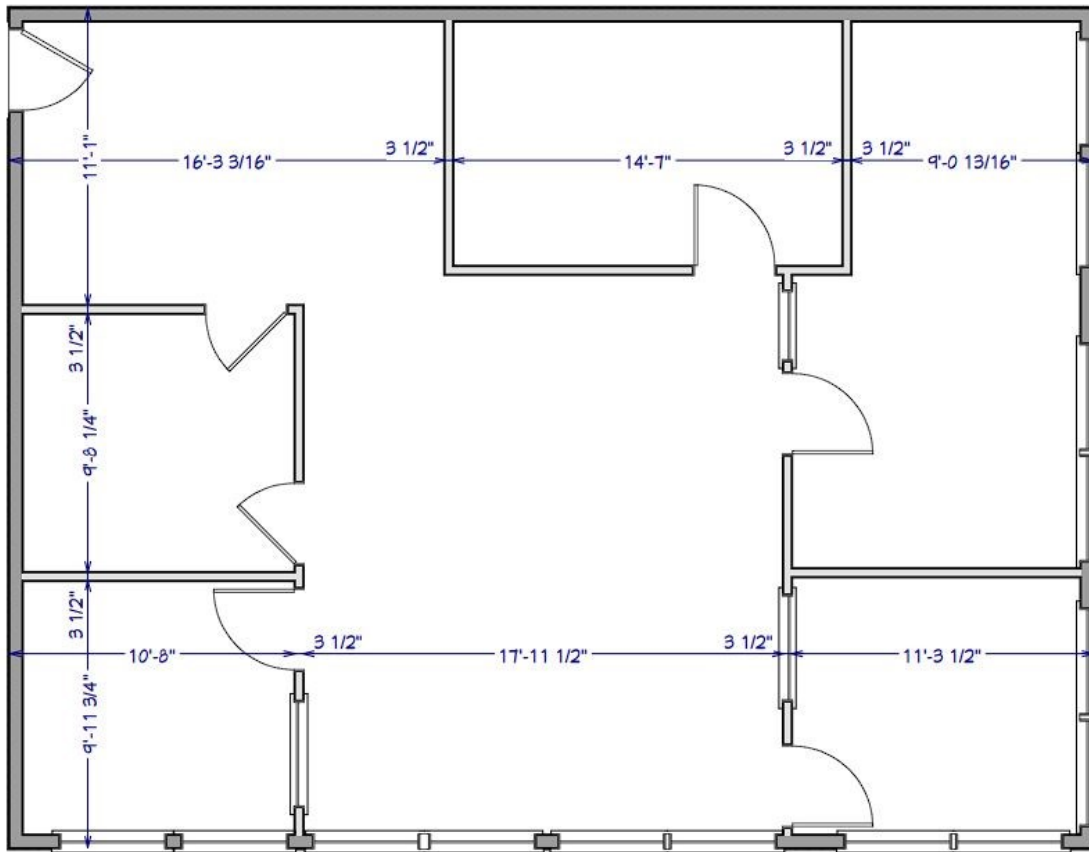
Brokerage team

www.CapitalCommercialRE.com

**FOR LEASE**

Westbank Financial Center — Office Space  
1112 S Washington Street Naperville | Illinois

**1112 S Washington Street | Suite 119 — 1,300sf**



112 S Washington  
Suite 119

While commercially reasonable effort has been made to provide accurate information, Capital Commercial Real Estate Brokerage, PLLC and its licensed brokers make no guarantees, representations or warranties as to the completeness or accuracy of the information presented herein. All interested parties are encouraged to perform their own due diligence and verify the information contained herein. This listing, its price, availability and circumstances are subject to change at any time or may be withdrawn for any reason without notice.

**CAPITAL COMMERCIAL**

**REAL ESTATE BROKERAGE**

Donna Ballentine | Jeff Shilkaitis

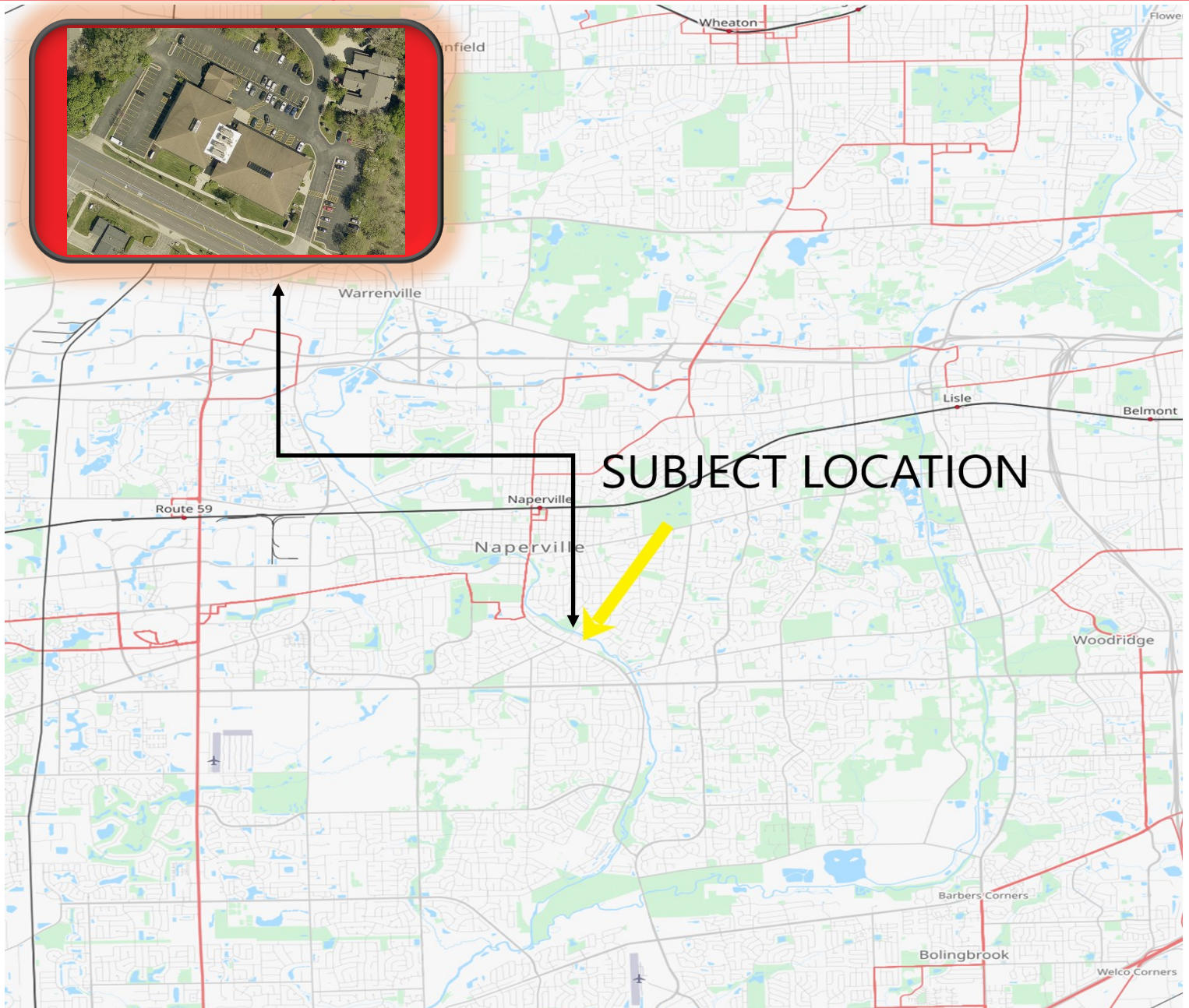
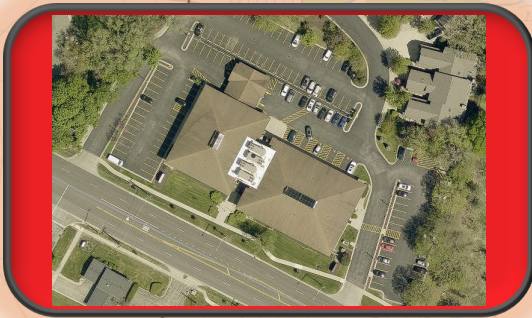
Direct: 847-254-1215 | Direct: 630-774-9111

Brokerage team

www.CapitalCommercialRE.com

**FOR LEASE**

Westbank Financial Center — Office Space  
1112 S Washington Street Naperville | Illinois



While commercially reasonable effort has been made to provide accurate information, Capital Commercial Real Estate Brokerage, PLLC and its licensed brokers make no guarantees, representations

**FOR LEASE INFORMATION:**

Jeff Shilkaitis | Principal Broker

Direct: 630-774-9111

Jeff@CapitalCommercialRE.com

Donna Ballentine | Principal Broker

Direct: 847-254-1215

Donna@CapitalCommercialRE.com

**CAPITAL COMMERCIAL**

**REAL ESTATE BROKERAGE**

Capital Commercial Real Estate Brokerage, PLLC

114 N Washington - Suite 6, Naperville, IL 60540