



15894 HIGHWAY 17  
P.O. BOX 56  
HAMPSTEAD, NC 28443  
910/270-5100 FAX: 910/270-5110

# FOR SALE

# HOLLY RIDGE BUILDING



**330 KRAFT STREET**  
**HOLLY RIDGE, NORTH CAROLINA**

**This 2,000 square foot facility is located at the corner of Highway 17 and Kraft Street in the town of Holly Ridge. Zoned (C) Commercial, this property is well suited for a variety of business uses.**

**CALL**  
**BRIAN NADEAU**  
**(910) 622-6258**

***Commercial & Investment Real Estate Specialists***

email: [info@creativecommercial.biz](mailto:info@creativecommercial.biz)  
[www.creativecommercial.biz](http://www.creativecommercial.biz)



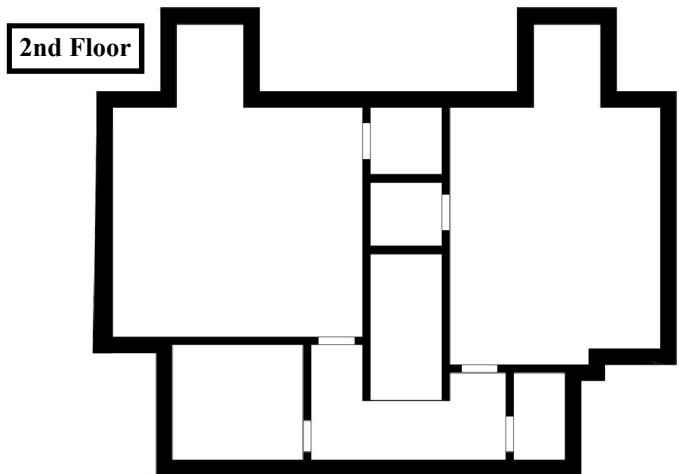
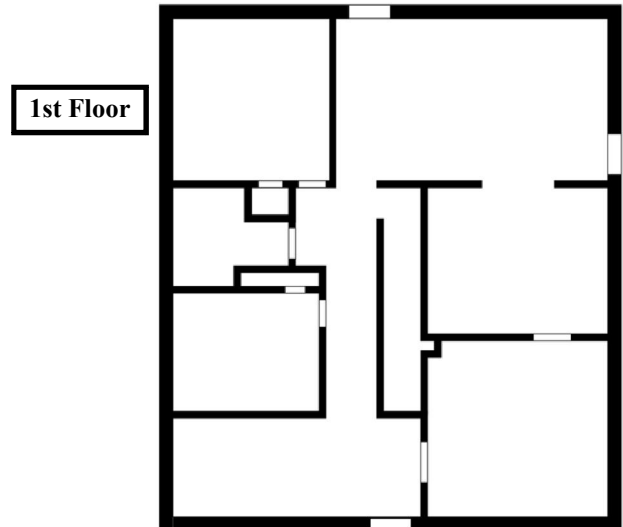
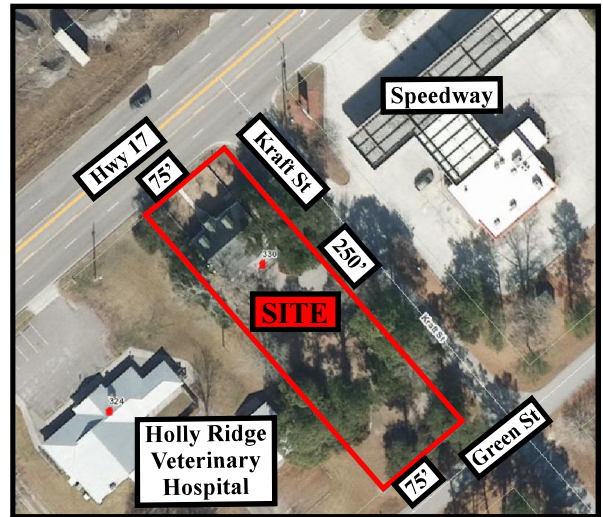
# 330 KRAFT STREET

## THE BUILDING

- +/- 2,000 Square Feet
  - 1,250 Square Foot First Floor
  - 750 Square Foot Second Floor
- Fully Heated And Cooled
- Original Hardwood Floors (Built 1941)
- ONWASA Water And Sewer
- Both HVAC Units Replaced in 2023
- Renovations Required To Convert To Business Use

## THE LOT

- .43 Acres
- 75' Of Frontage On Highway 17
- 75' Of Frontage On North Green Street
- 250' Of Frontage On Kraft Street
- PIN: 423711659531
- Onslow County Deed Book 2608, Page 477
- Zoned Commercial (C) Through The Town Of Holly Ridge Allowing Most Office And Service Businesses



## THE OFFERING

**\$495,000**

CREATIVE COMMERCIAL PROPERTIES, INC.

CALL

BRIAN NADEAU

(910) 622-6258

Email: [brian@creativecommercial.biz](mailto:brian@creativecommercial.biz)

[www.creativecommercial.biz](http://www.creativecommercial.biz)



Individual  
Members



Creative Commercial Properties, Inc. reasonably believes the information in this brochure is fairly and accurately stated. However, any prospective purchaser is urged to independently confirm its accuracy and completeness.