



Manufacturing Facility

100 STRAITS LN, KILLBUCK, OHIO 44637

CBRE

For Lease
±120,890 SF

Property Overview

This turnkey manufacturing facility offers a rare opportunity to step into a fully operational, infrastructure-ready production plant. Built in 2000 and expanded with a **12,000 SF climate-controlled addition** in 2016, the steel-constructed building delivers heavy 3,000-amp power, in-place production and finishing infrastructure, and a highly efficient layout ready to run from day one. Roughly 5,000 SF of finished office space supports daily operations, while the 13.461 - acre site offers generous parking, outdoor storage, and clear room to grow.

Positioned between the major markets of Columbus and Cleveland, the property pairs convenient regional access for both production and distribution with a deep, skilled local workforce experienced in manufacturing - a hallmark of the surrounding Killbuck and greater Holmes County community. With seven docks, ample yard, established infrastructure, and a proven production history, the facility is exceptionally well-suited for furniture, millwork, building products, and a broad range of industrial and distribution users.



Building Construction

Steel



Water / Sewer

Village of Killbuck



Lot Size

13.461 Acres



Power

3000A / 480V / 3P



Zoning

Industrial



Lease Rate

\$4.95 NNN



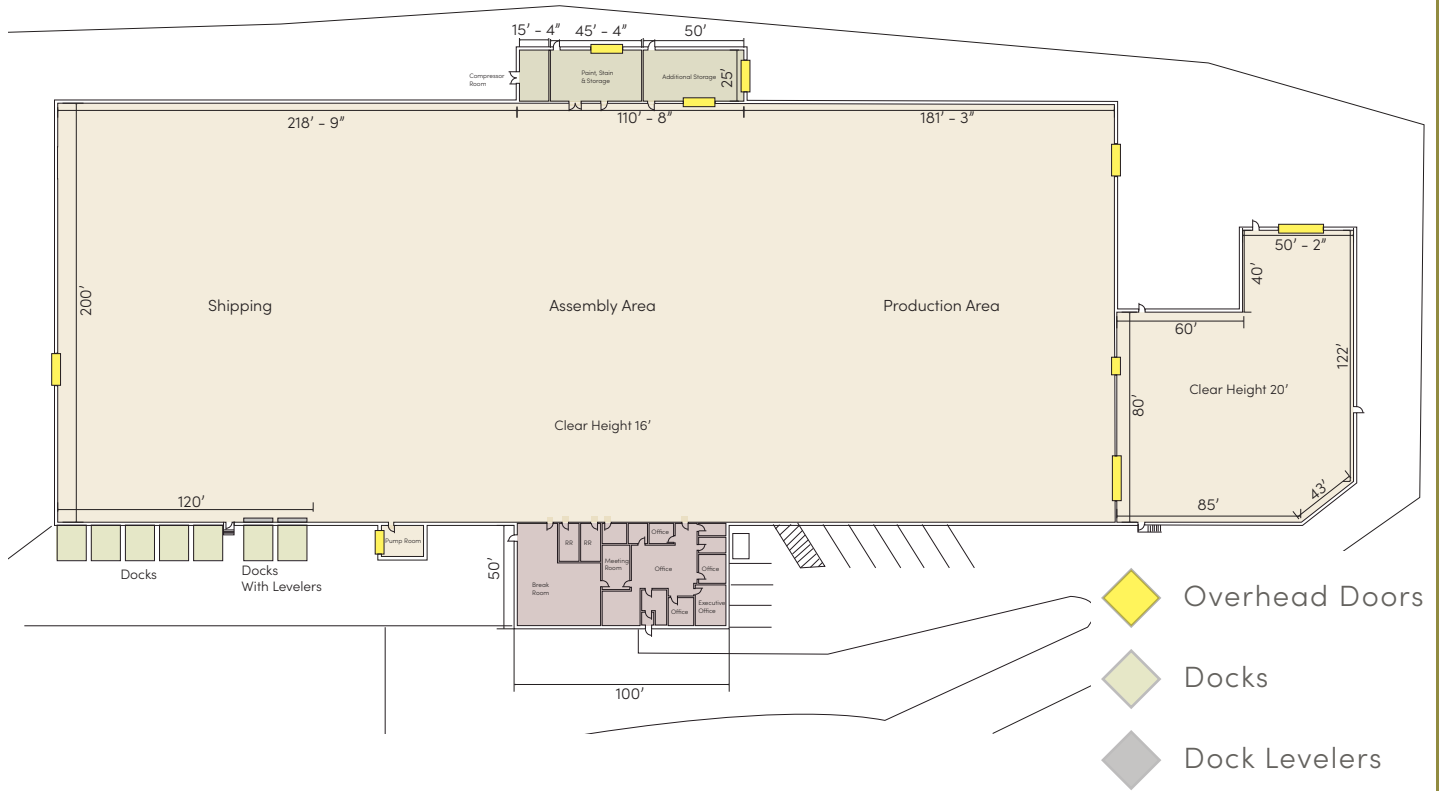
CURRENT USE:




- MILLWORK / FURNITURE MANUFACTURING

POTENTIAL USES:

- BUILDING PRODUCTS MANUFACTURING
- WAREHOUSE & DISTRIBUTION
- PRECISION MACHINING
- EQUIPMENT MANUFACTURING / SUPPLIERS

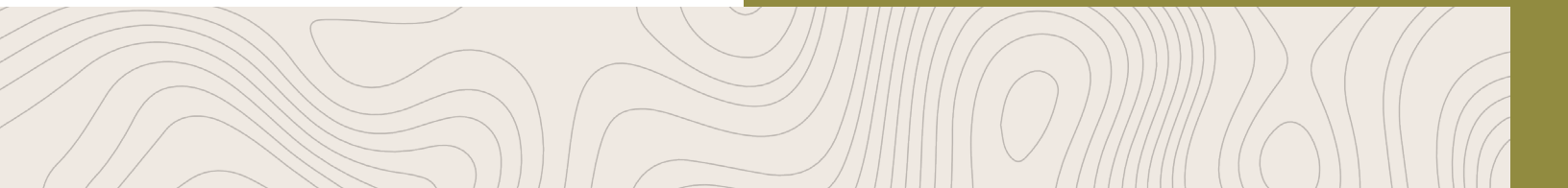
Floor Plan

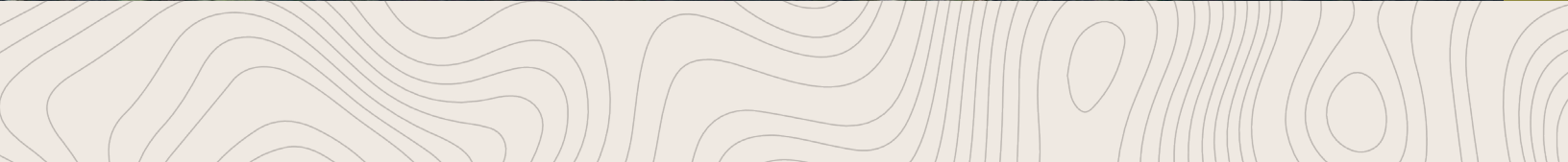
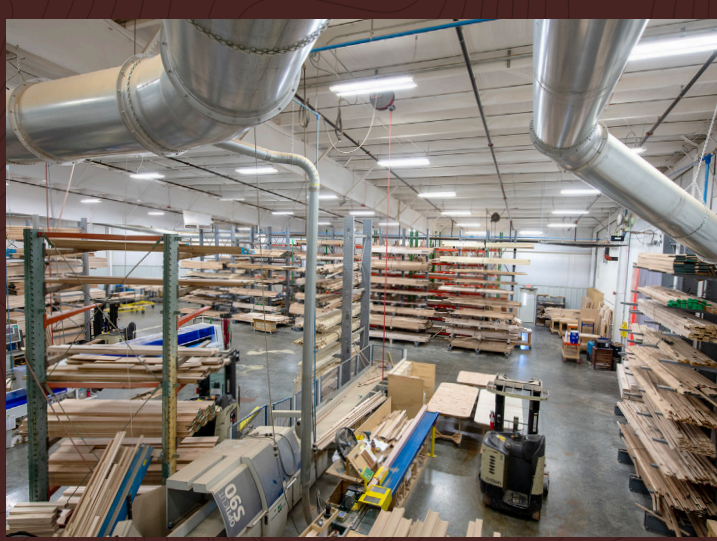


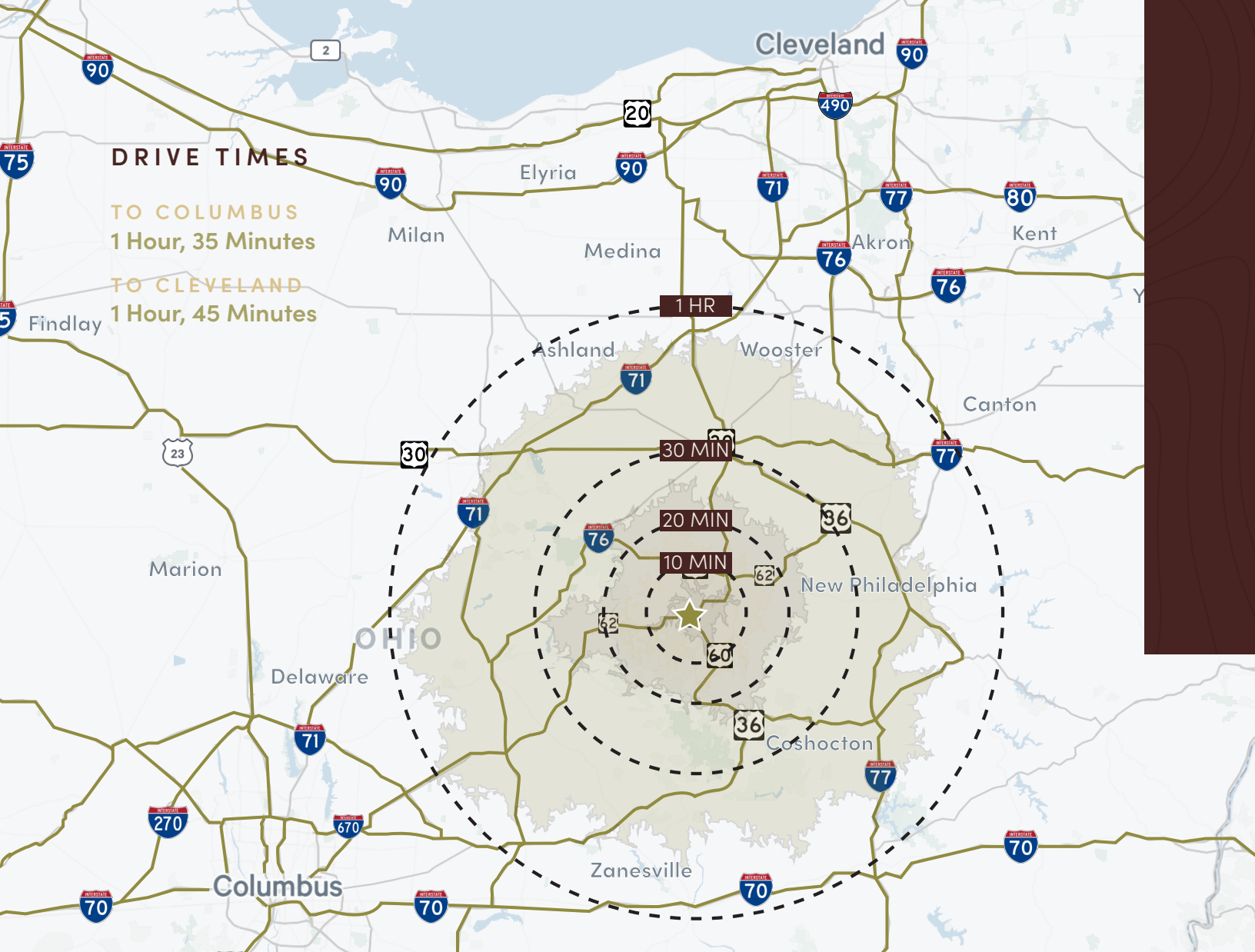
- 
MANUFACTURING SPACE
 ±112,800 SF
- 
OFFICE SPACE
 ±5,000 SF
- 
PRODUCT STORAGE
 ± 3,090 SF

BUILDING HIGHLIGHTS

- **Building Size:** ±120,890
- **Year Built:** 2000 / 2016 (addition)
- **Clear Height:** 16' - 20'
- **Docks:** 7 (2 Levelers)
- **Overhead Doors:** 6 Exterior / 3 interior
- **Floor Thickness:** 6" Reinforced Concrete
- **Sprinklers:** Wet (with 90,000 gal holding tank)

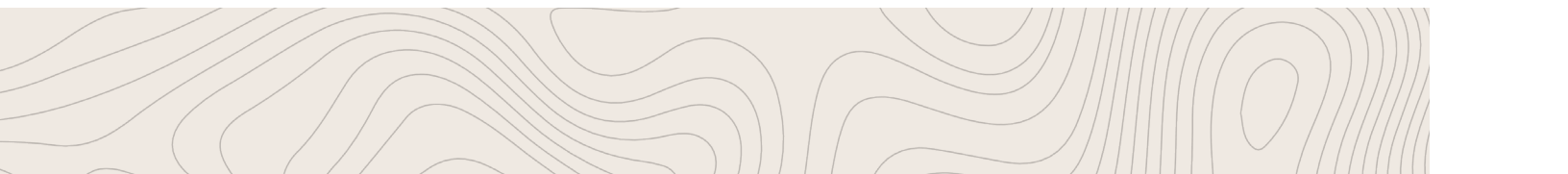






Area Demographics

Drive Time	10 Minute	20 Minute	30 Minute
Place of Work			
2025 Businesses	147	752	2,584
2025 Employees	1,499	7,922	27,343
2025 Average Household Income	\$82,659	\$89,193	\$91,681
2025 Households	1,092	7,196	22,995
Population			
2025 Population	2,565	19,807	66,556
2030 Population (5 year Projection)	2,519	19,794	66,867
2025 Daytime Population	3,400	20,082	66,940
2025 Employed Civilian Population 16+	1,289	9,809	31,401





100 STRAITS LN.
KILLBUCK, OHIO 44637

CONTACTS

ANDY FLOWERS

Associate

+1 330 670 4411

andy.flowers@cbre.com

DEAN BACOPOULOS

Vice President

+1 330 670 4405

dean.bacopoulos@cbre.com

STEVE LAZARIDES

First Vice President

+1 330 670 4410

steve.lazarides@cbre.com

CBRE

© 2026 CBRE, Inc. All rights reserved. This information has been obtained from sources believed reliable but has not been verified for accuracy or completeness. CBRE, Inc. makes no guarantee, representation or warranty and accepts no responsibility or liability as to the accuracy, completeness, or reliability of the information contained herein. You should conduct a careful, independent investigation of the property and verify all information. Any reliance on this information is solely at your own risk. CBRE and the CBRE logo are service marks of CBRE, Inc. All other marks displayed on this document are the property of their respective owners, and the use of such marks does not imply any affiliation with or endorsement of CBRE. Photos herein are the property of their respective owners. Use of these images without the express written consent of the owner is prohibited.