



# For lease

Craig Commerce Center

2625, 2629, 2707 & 2711 East Craig Road

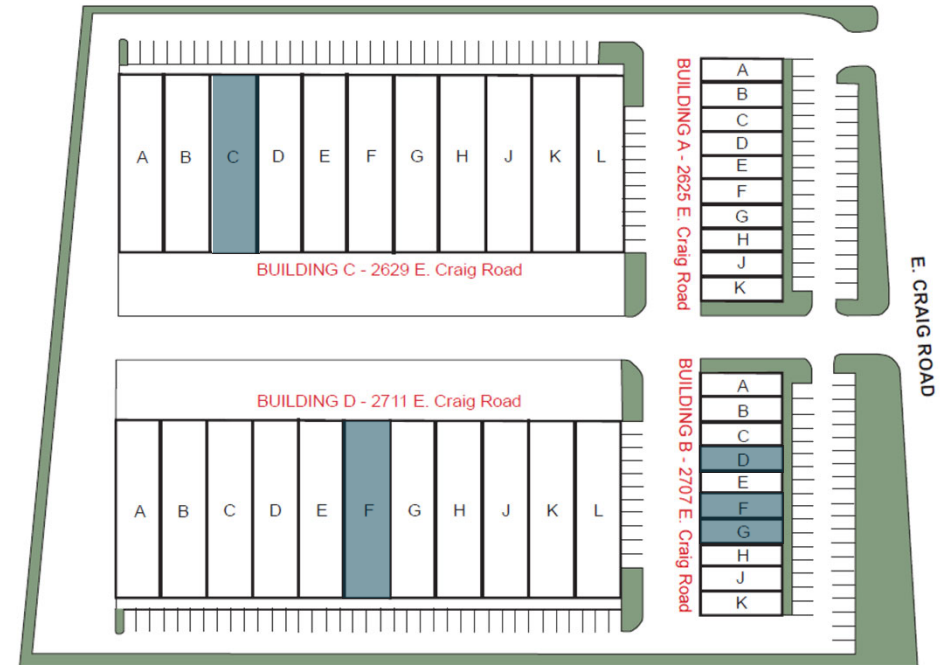
North Las Vegas, NV 89030





- ±61,000 cars per day on Craig Road
- 218,920 sf industrial park built in 1997
- Zoning: M-2 city of North Las Vegas
- Concrete tilt-up construction
- Dock and / or grade level loading doors
- 24' clear height
- 200 amps per bay, 277/480 V 3-phase power
- HVAC offices, evaporative cooled warehouse
- DSL/cable internet service availability
- Skylights in warehouse
- Immediate freeway access to I-15

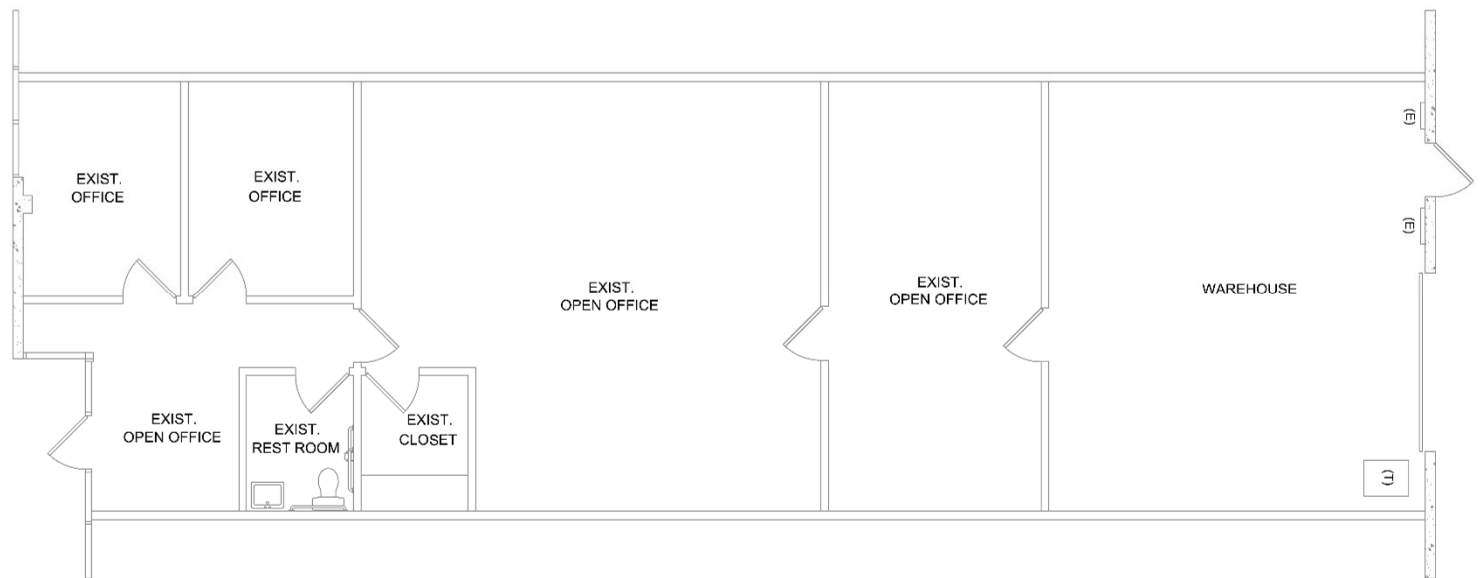
Building	Suite	Total s.f.	Office s.f.	Warehouse s.f.	Ceiling height	Dock/Grade	Rate	Cam	Monthly	Date Available
2707	D	2,000	1,413	587	20'	1 GL	\$1.40	\$0.241	\$3,282.00	10/1/2026
2707	F/G	4,000	1,667	2,333	24'	2 GL	\$1.25	\$0.241	\$5,964.00	10/1/2026
2629	C	8,008	1,162	6,846	23'	1 DH   1 GL	\$1.10	\$0.241	\$10,738.73	7/1/2026
2711	F	8,008	615	7,393	24'	1 DH   1 GL	\$1.10	\$0.241	\$10,738.73	7/1/2026



# Floorplans

## 2707 East Craig Rd Suite D

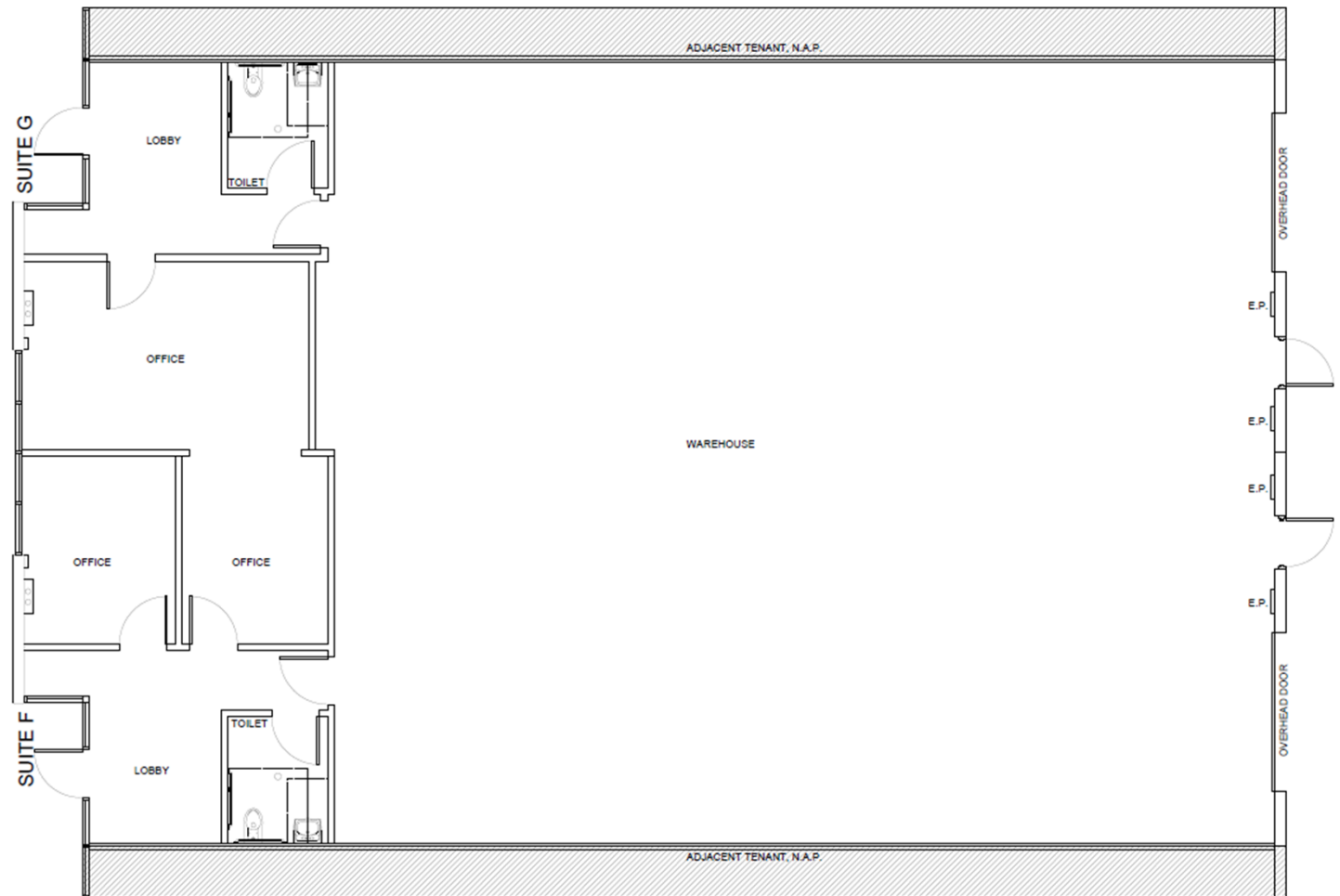
- 2,000 total s.f.
- 1,413 s.f. office
- 587 s.f. warehouse
- 20' clear height
- One (1) 10' x 12' grade door
- \$1.40/s.f. NNN
- \$0.241 CAM
- \$3,282.00 monthly
- Available 10/1/26



# Floorplans

## 2707 East Craig Rd Suite F/G

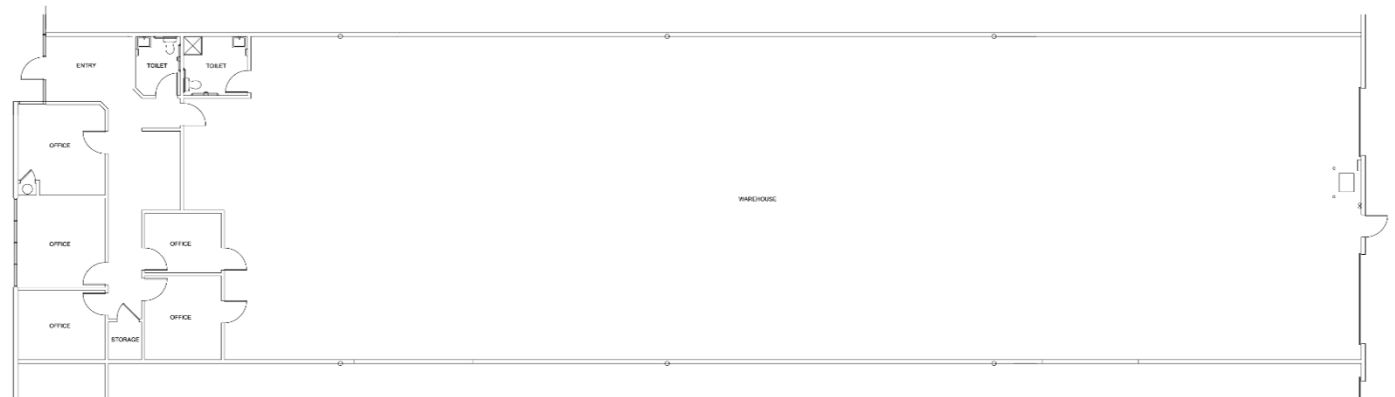
- 4,000 total s.f.
- 1,667 s.f. office
- 2,333 s.f. warehouse
- 24' clear height
- Two (2) 10' x 12' grade doors
- \$1.25/s.f. NNN
- \$0.241 CAM
- \$5,964.00 monthly
- Available 10/1/26



# Floorplans

## 2629 East Craig Rd Suite C

- 8,008 total s.f.
- 1,162 s.f. office
- 6,846 s.f. warehouse
- 23' clear height
- One (1) 9' x 10' dock door
- One (1) 12' x 15' grade door
- \$1.10/s.f. NNN
- \$0.241 CAM
- \$10,738.73 monthly
- Available 7/1/26

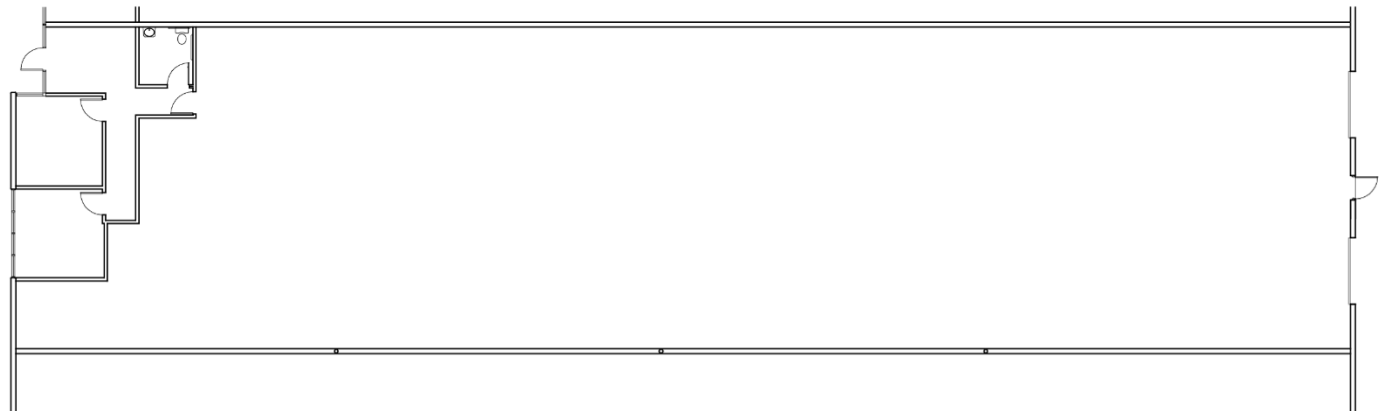


# Floorplans

## 2711 East Craig Rd Suite F

---

- 8,008 total s.f.
- 615 s.f. office
- 7,393 s.f. warehouse
- 24' clear height
- One (1) 9' x 10' dock door
- One (1) 12' x 14' grade door
- \$1.10/s.f. NNN
- \$0.241 CAM
- \$10,738.73 monthly
- Available 7/1/26





**Danny Leanos**

Vice President

+1 702 522 5008

danny.leanos@jll.com

NV Lic. #S.0191773

**Brayden Stockbauer**

Associate

+1 702 522 5114

brayden.stockbauer@jll.com

NV Lic. #S.0203930

**Jason Simon, SIOR**

Executive Managing Director

+1 702 522 5001

jason.simon@jll.com

NV Lic. # S.0045593

**Rob Lujan, SIOR, CCIM**

Executive Managing Director

+1 702 522 5002

rob.lujan@jll.com

NV Lic. # S.0051018