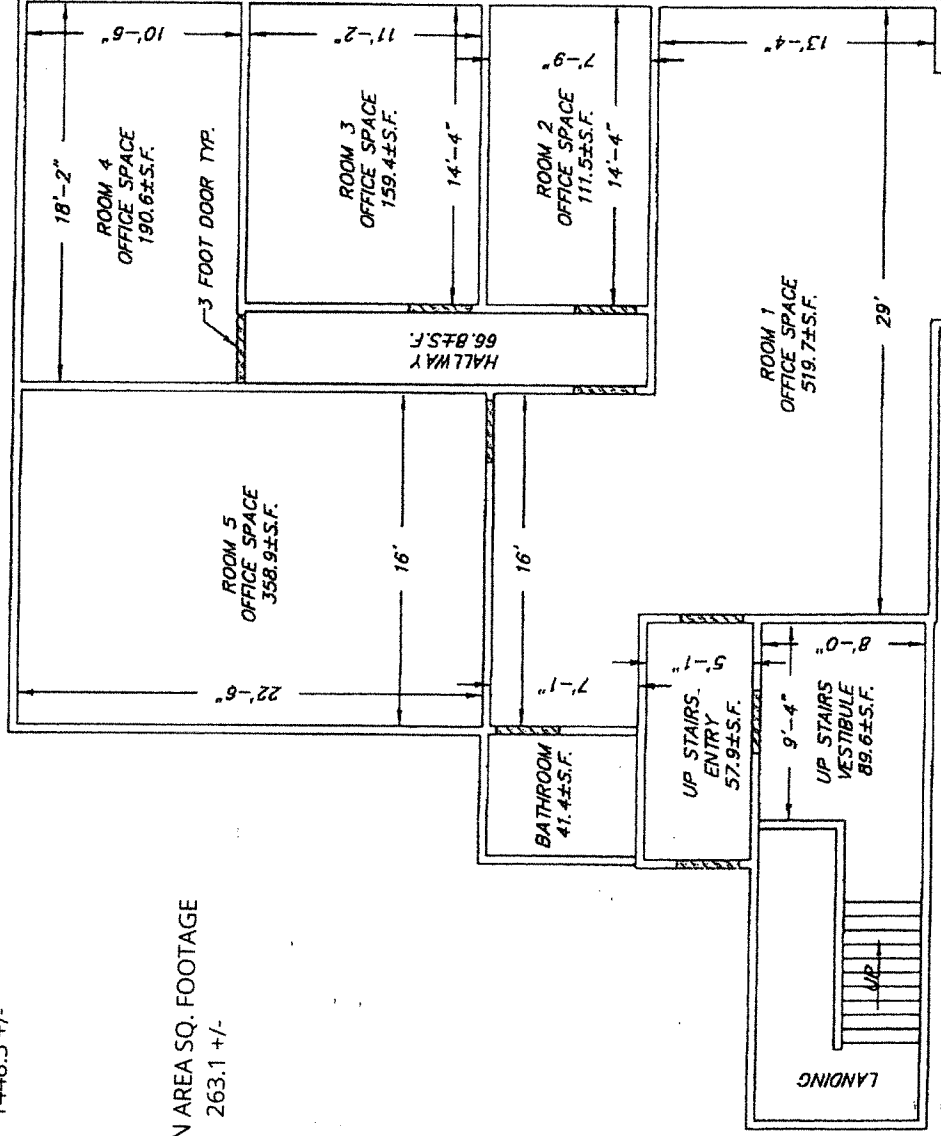
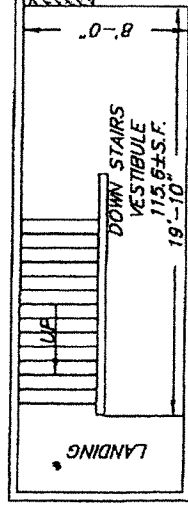


UNIT SQ. FOOTAGE
1448.3 +/-

COMMON AREA SQ. FOOTAGE
263.1 +/-



SECOND FLOOR OFFICE SPACE



FIRST FLOOR ENTRY WAY

FLOOR PLAN

#408 SWEDESBORO ROAD
TOWNSHIP OF HARRISON
GLOUCESTER COUNTY, NEW JERSEY

PENNEL LAND SURVEYING, INC.

327 CLEMS RUN
MULLICA HILL, N.J. 08062

(856) 478-4571 FAX (856) 478-0286
CERTIFICATE OF AUTHORIZATION #24CA28115700

DONALD C. PENNELL DATE

PROFESSIONAL LAND SURVEYOR
NEW JERSEY LICENSE #85393

DATE
2/1/26

SCALE
1"=10'

DRAWN
DP

COMM #.
26-12