

# BELTWAY ANTOINE

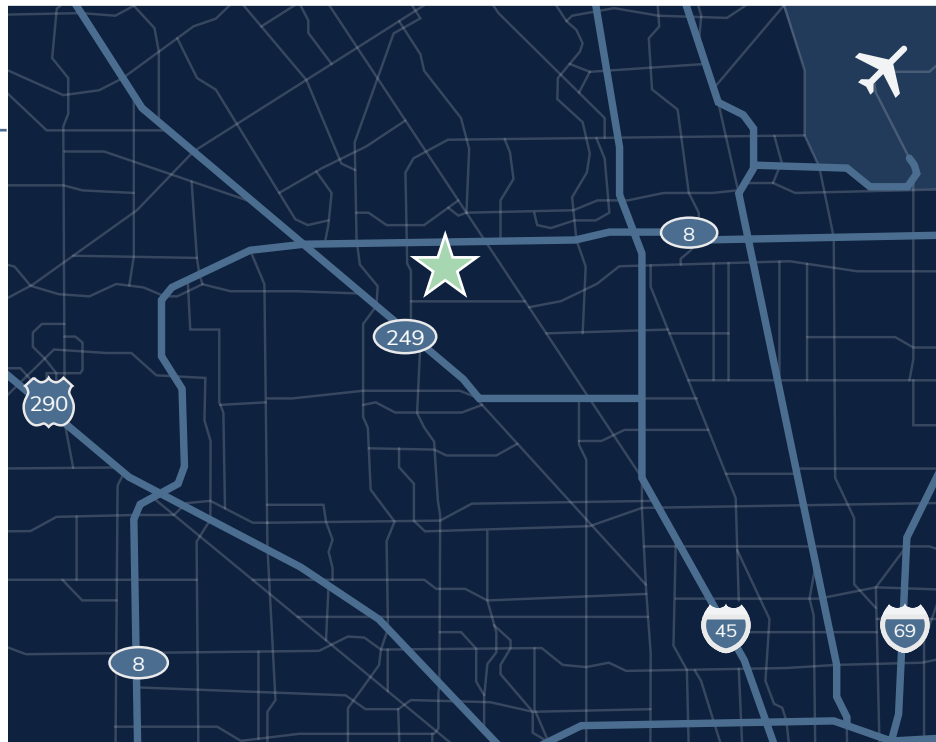
BUSINESS PARK

**SPACE AVAILABLE**

3403, 3413, 3423, 3433, 3443, 3463 & 3453 N. SAM HOUSTON PKWY. W. | HOUSTON, TX 77086

## PROPERTY OVERVIEW:

- 383,191 SF
- 7 buildings
- Master planned business park
- Rear-load and front-load configuration
- Tilt-wall construction
- Close proximity to Beltway 8, Interstate 45, and Highway 249/290
- Frontage on Beltway 8



FOR LEASING INFORMATION, CONTACT:

**STREAM**

JACK RATHE  
jack.rathe@streamrealty.com  
972.655.9067

GARRET GEACONE  
garret.geacone@streamrealty.com  
409.789.9751

JEREMY LUMBRERAS  
jlumbreras@streamrealty.com  
713.560.0608

**mdh**

# BELTWAY ANTOINE

BUSINESS PARK

3453 N. SAM HOUSTON PKWY W., SUITE 750

N SAM HOUSTON PKWY W

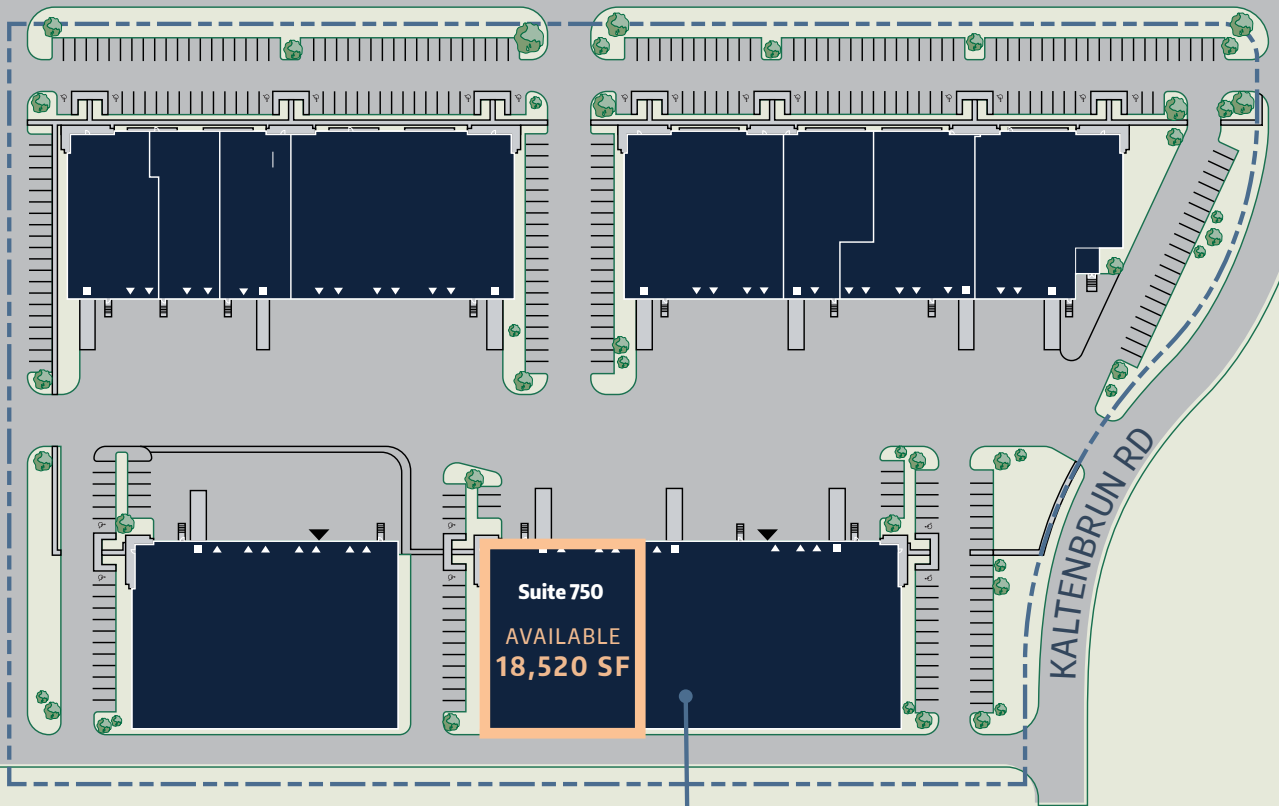
8



SAM HOUSTON TOLLWAY

8

N SAM HOUSTON PKWY W



**BELTWAY ANTOINE 7**  
3453 N. SAM HOUSTON PKWY

FOR LEASING INFORMATION, CONTACT:



**JACK RATHE**  
jack.rathe@streamrealty.com  
972.655.9067

**GARRET GEACONE**  
garret.geacone@streamrealty.com  
409.789.9751

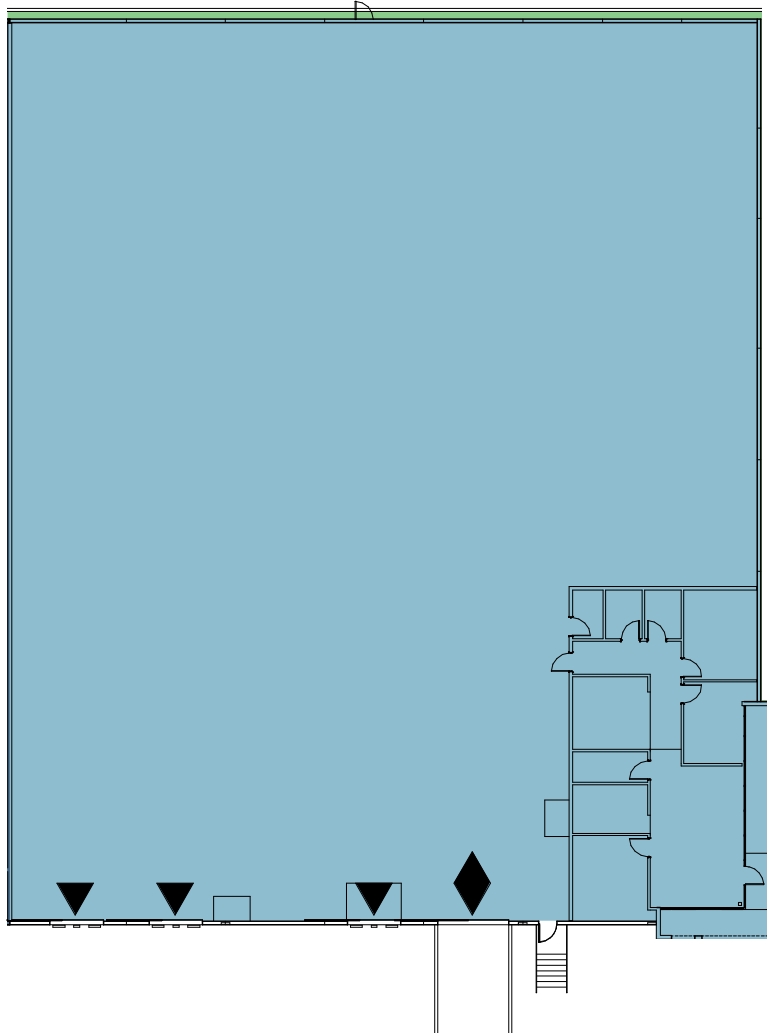
**JEREMY LUMBRERAS**  
jlumbreras@streamrealty.com  
713.560.0608



# BELTWAY ANTOINE

BUSINESS PARK

3453 N. SAM HOUSTON PKWY W., SUITE 750



## SUITE 750 FEATURES:

- 18,520 SF
  - 1,585 SF Office
- 24' Clear Height
- Column Spacing 45' x 45'
- 3 Dock Doors
- 1 Drive-in Ramp
- 190' Fenced Truck Court
- ESFR Sprinkler
- LED Lighting

## FOR LEASING INFORMATION, CONTACT:

**JACK RATHE**  
jack.rathe@streamrealty.com  
972.655.9067

**GARRET GEACONE**  
garret.geaccone@streamrealty.com  
409.789.9751

**JEREMY LUMBRERAS**  
jlumbreras@streamrealty.com  
713.560.0608

**STREAM**

**mdh**

# BELTWAY ANTOINE

BUSINESS PARK

3453 N. SAM HOUSTON PKWY W., SUITE 750



FOR LEASING INFORMATION, CONTACT:

 STREAM®

JACK RATHE  
jack.rathe@streamrealty.com  
972.655.9067

GARRET GEACONE  
garret.geacone@streamrealty.com  
409.789.9751

JEREMY LUMBRERAS  
jlumbreras@streamrealty.com  
713.560.0608

mdh