



**Rexford
Industrial**

865

For Lease

845, 855 & 865 S. Milliken Avenue **ONTARIO, CALIFORNIA**

Multi-Tenant Industrial Building

- Highly Desirable Warehouse & Office Units From 1,152 SF to 4,608 SF
- Milliken Avenue Street Frontage
- Newly Renovated Units
- 14' Clear Height
- Grade-Level Loading Doors
- Access To Interstate 10, 15, and 60 Freeways

For Information, Contact:

DANYEIL STALLWORTH

424-256-2129

Dstallworth@rexfordindustrial.com

CA License #01990196

ALEXANDRIA PIRRITANO

424-243-7771

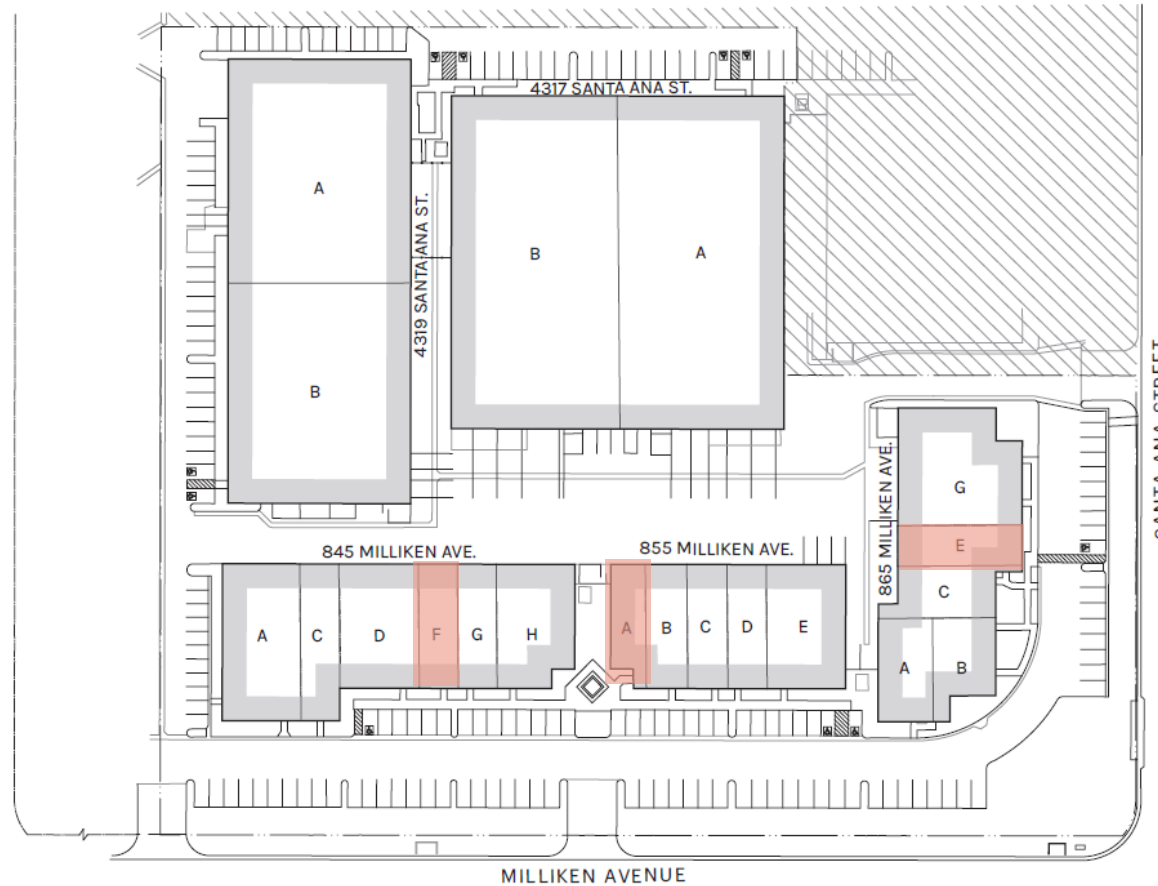
Apirritano@rexfordindustrial.com

FOR LEASE

845, 855 & 865 S. Milliken Ave.

ONTARIO, CALIFORNIA

UNIT	TOTAL SF	WAREHOUSE SF	LEASE RATE	LOADING DOORS	SPACE TYPE	OCCUPANCY
865E	1,888 SF	1,182 SF	\$1.45/SF + \$0.09 CAM	1	INDUSTRIAL	IMMEDIATE
855A	1,605 SF	N/A	\$1.75/SF + \$0.09 CAM	N/A	OFFICE	6/1/2026
845F	1,824 SF	1,487 SF	\$1.45/SF + \$0.09 CAM	1	INDUSTRIAL	6/1/2026

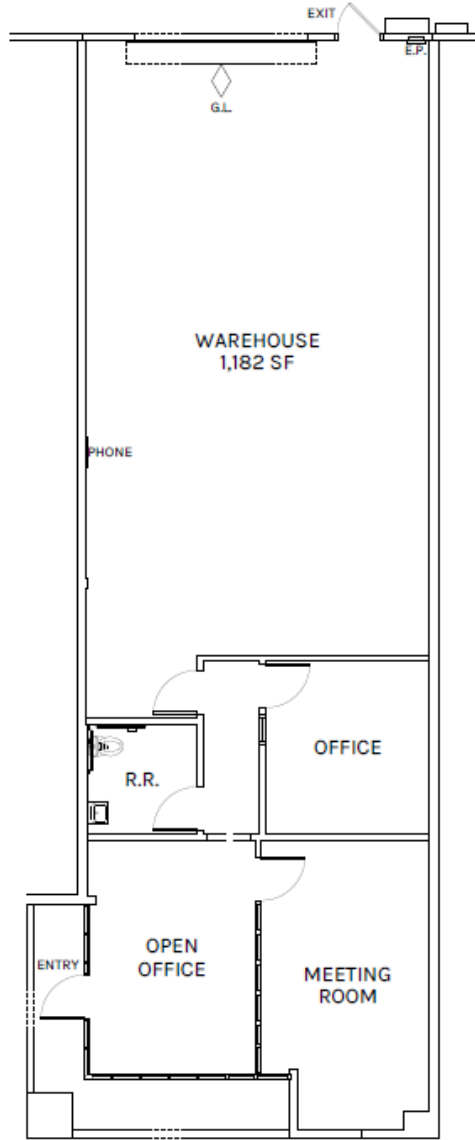


FLOOR PLANS

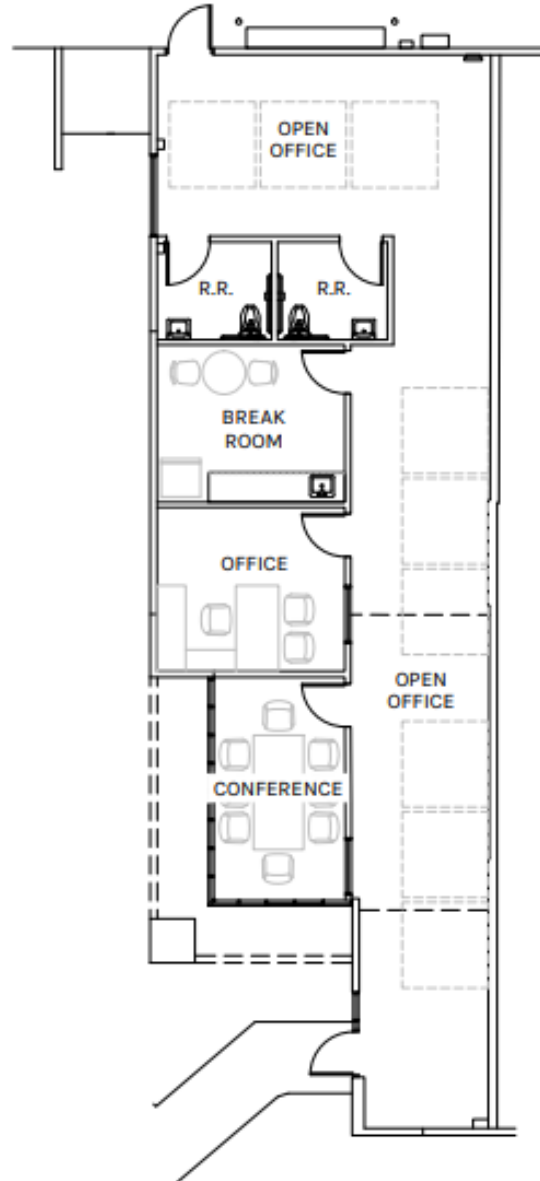
845, 855, & 865 S. Milliken Ave.

ONTARIO, CALIFORNIA

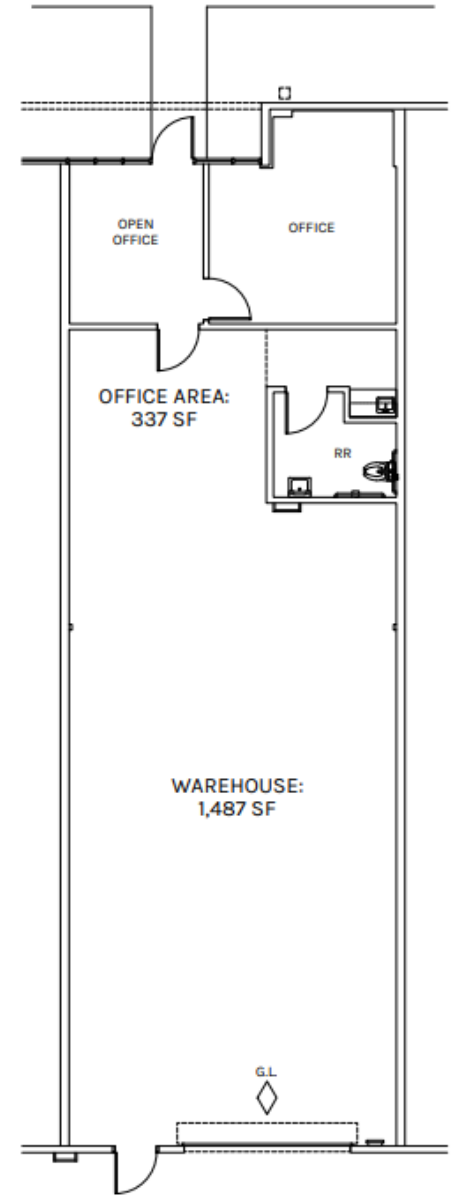
865 E | 1,888 SF



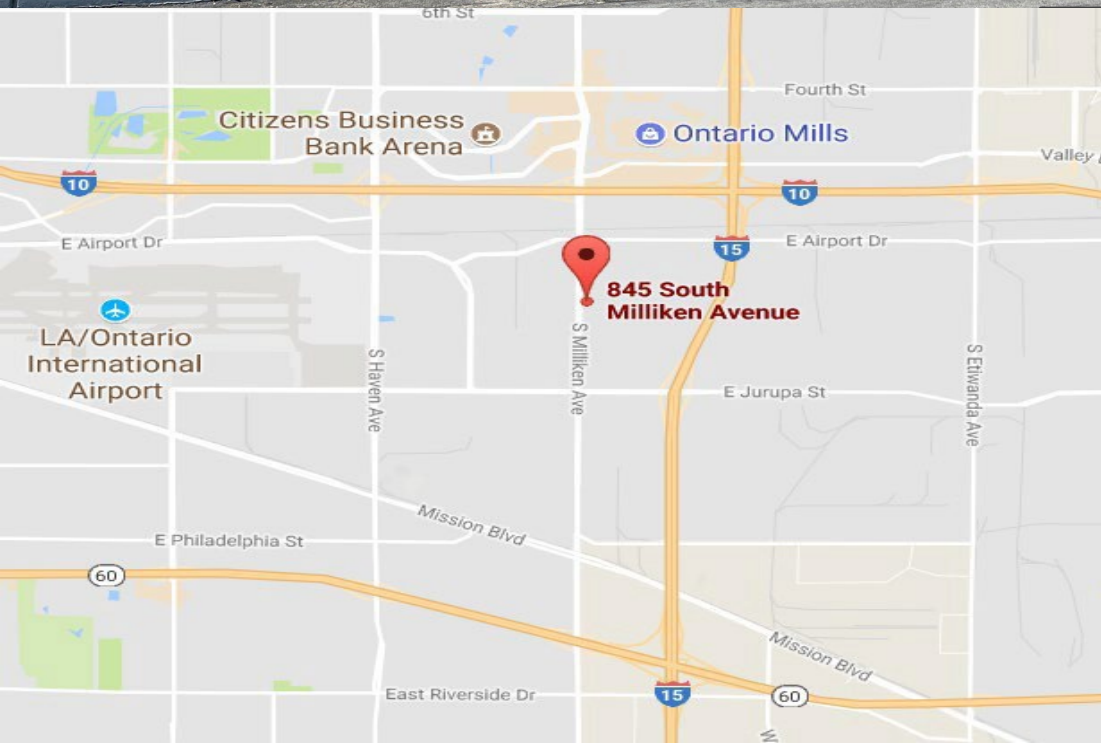
855 A | 1,605 SF



845 F | 1,824 SF



OFFICE
AREA
706 SF



**Rexford
Industrial**

DANYEIL STALLWORTH

424-256-2129

Dstallworth@rexfordindustrial.com

CA License #01990196

ALEXANDRIA PIRRITANO

424-243-7771

Apirritano@rexfordindustrial.com