

FOR LEASE

±27,360 SF
CROSSDOCK FACILITY
ON ±4.0 ACRES



8600 Banana Avenue, Fontana, CA

Building Features

- Ideal Transload/Final Mile Facility
- ±2,432 Square Feet of Two-Story Office Space
- 25 - 10'x12' DH Doors - South Side
- 21 - 10'x12' DH Doors - North Side
- 2 - 14'x14' Ground Level Doors - North Side
- Each Dock Position Equipped with Edge of Dock Levelers/Trailer Lighting/Door Safety Bollards
- Each EOD Leveler Rated at 30,000 Pounds
- 4 Electric Vehicle Charging Stations
- Office and Warehouse Restrooms
- 4 Big Ass Fans
- 15' - 22' Foot Warehouse Clearance
- Zoned General Industrial (M-2)
- ±128' Truck Court Depth - South Side
- ±155' Truck Court Depth - North Side

Voit

REAL ESTATE SERVICES

Shy Assar

Senior Vice President

909.545.8091

sassar@voitco.com

CA License #01964667

Braden Sprenger

Associate

909.545.8000

bsprenger@voitco.com

CA License #02190434

NEWMARK

Steve Sprenger

Vice Chairman

909.974.4078

steve.sprenger@nrmk.com

CA License #01202806

Randy Lockhart

Vice Chairman

909.974.4067

randy.lockhart@nrmk.com

CA License #00974981

**Click Here to
View Video**

VOIT • 3280 East Guasti Road, Suite 100, Ontario, CA 91761

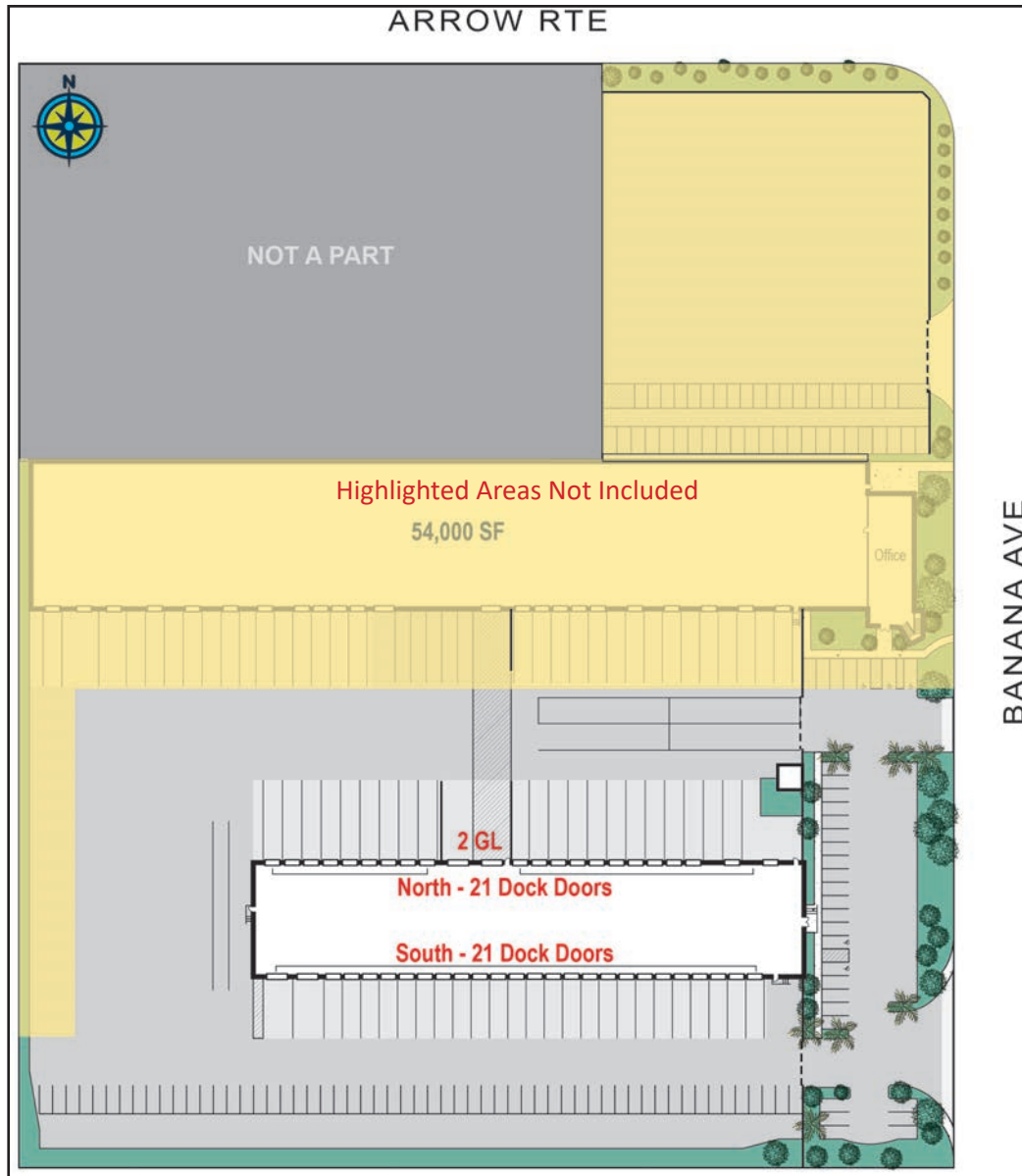
NEWMARK • 3281 E. Guasti Road, Suite 370, Ontario, CA 91761 • Tel: 909.974.4078 • Corporate RE#01355491

FOR LEASE

±27,360 SF
CROSSDOCK FACILITY
ON ±4.0 ACRES

8600 Banana Avenue, Fontana, CA

SITE PLAN



Voit

REAL ESTATE SERVICES

NEWMARK

Shy Assar
Senior Vice President
909.545.8091
sassar@voitco.com
CA License #01964667

Braden Sprenger
Associate
909.545.8000
bsprenger@voitco.com
CA License #02190434

Steve Sprenger
Vice Chairman
909.974.4078
steve.sprenger@nrmk.com
CA License #01202806

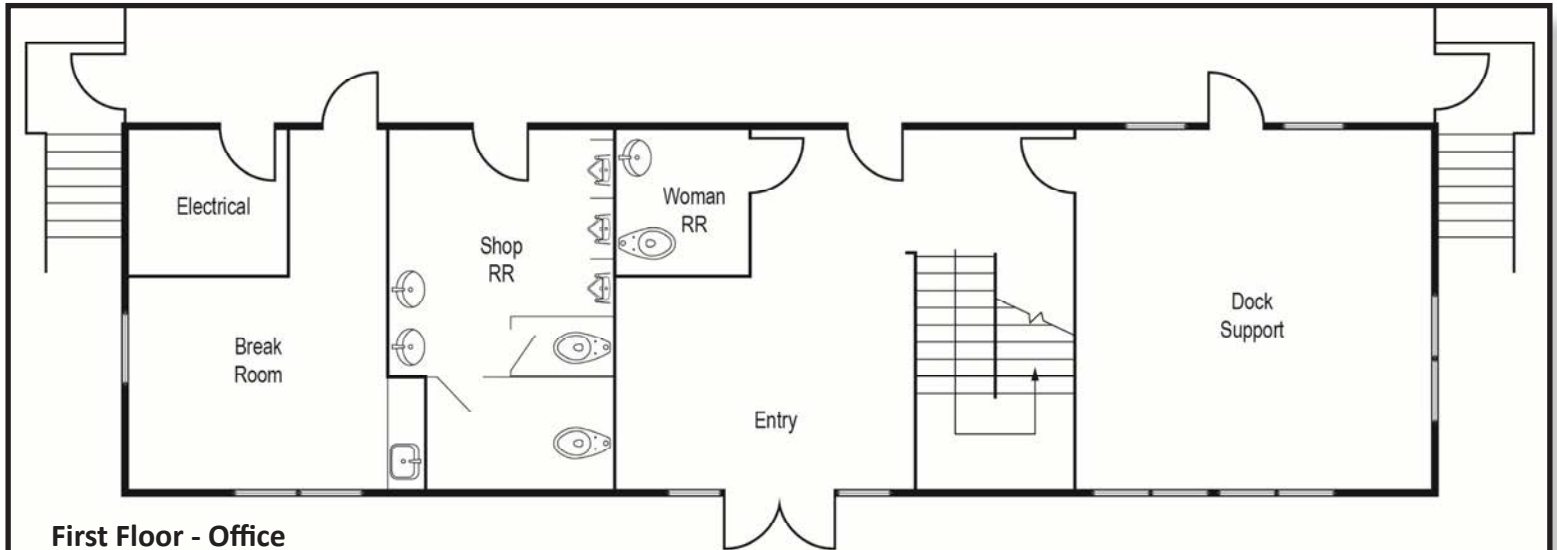
Randy Lockhart
Vice Chairman
909.974.4067
randy.lockhart@nrmk.com
CA License #00974981

FOR LEASE

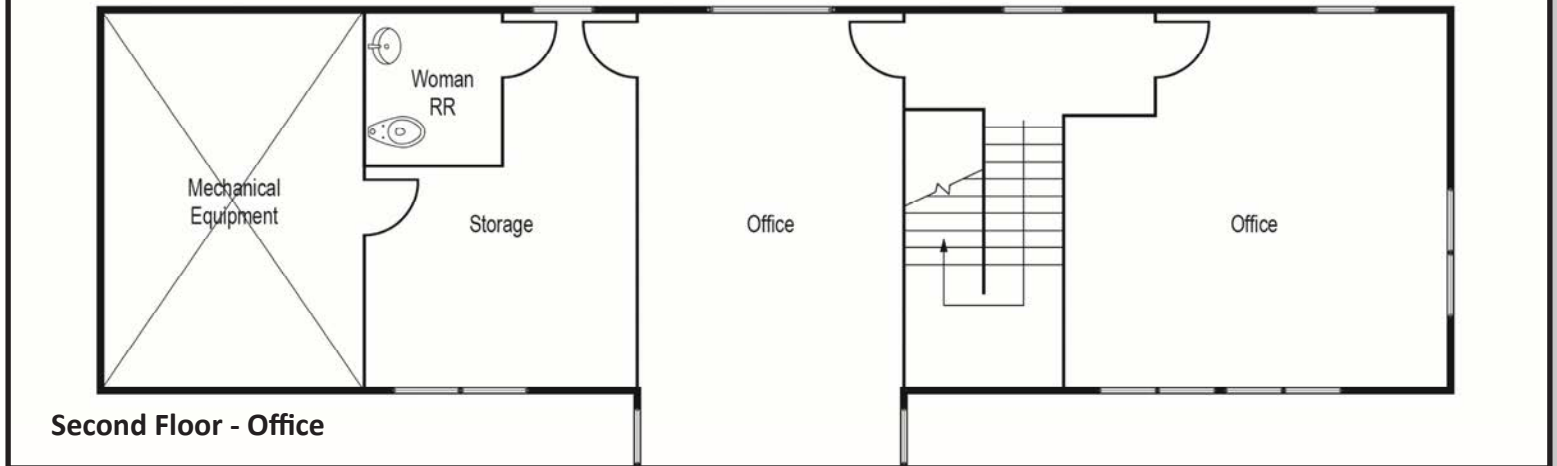
±27,360 SF
CROSSDOCK FACILITY
ON ±4.0 ACRES

8600 Banana Avenue, Fontana, CA

OFFICE FLOOR PLANS



First Floor - Office



Second Floor - Office

Voit

REAL ESTATE SERVICES

NEWMARK

Shy Assar
Senior Vice President
909.545.8091
sassar@voitco.com
CA License #01964667

Braden Sprenger
Associate
909.545.8000
bsprenger@voitco.com
CA License #02190434

Steve Sprenger
Vice Chairman
909.974.4078
steve.sprenger@nrmk.com
CA License #01202806

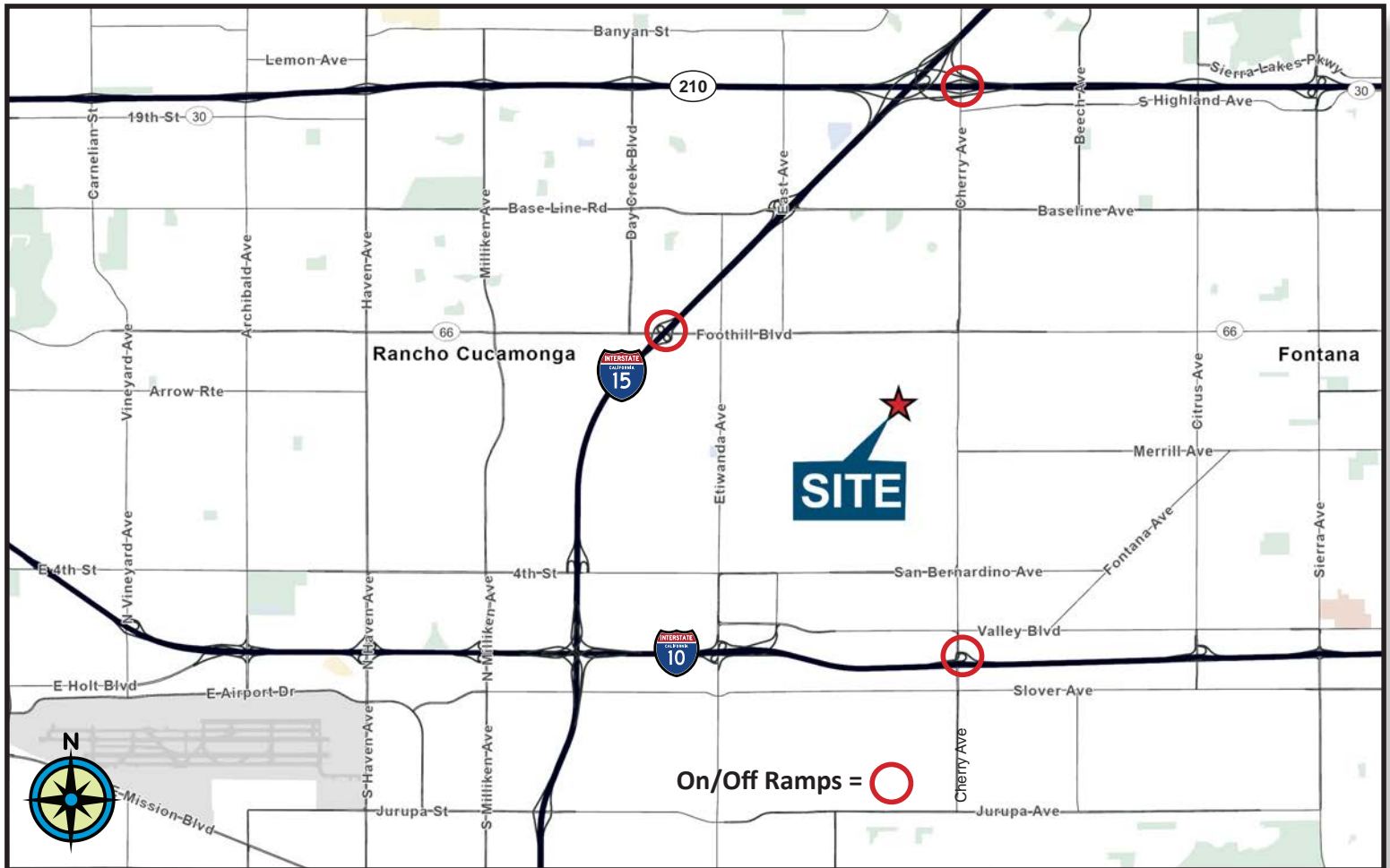
Randy Lockhart
Vice Chairman
909.974.4067
randy.lockhart@nrmk.com
CA License #00974981

FOR LEASE

±27,360 SF
CROSSDOCK FACILITY
ON ±4.0 ACRES

8600 Banana Avenue, Fontana, CA

LOCATOR MAP



Voit

REAL ESTATE SERVICES

Shy Assar
Senior Vice President
909.545.8091
sassar@voitco.com
CA License #01964667

Braden Sprenger
Associate
909.545.8000
bsprenger@voitco.com
CA License #02190434

NEWMARK

Steve Sprenger
Vice Chairman
909.974.4078
steve.sprenger@nrmk.com
CA License #01202806

Randy Lockhart
Vice Chairman
909.974.4067
randy.lockhart@nrmk.com
CA License #00974981

FOR LEASE

±27,360 SF
CROSSDOCK FACILITY
ON ±4.0 ACRES

8600 Banana Avenue, Fontana, CA

AERIAL



Voit

REAL ESTATE SERVICES

Shy Assar
Senior Vice President
909.545.8091
sassar@voitco.com
CA License #01964667

Braden Sprenger
Associate
909.545.8000
bsprenger@voitco.com
CA License #02190434

NEWMARK

Steve Sprenger
Vice Chairman
909.974.4078
steve.sprenger@nrmk.com
CA License #01202806

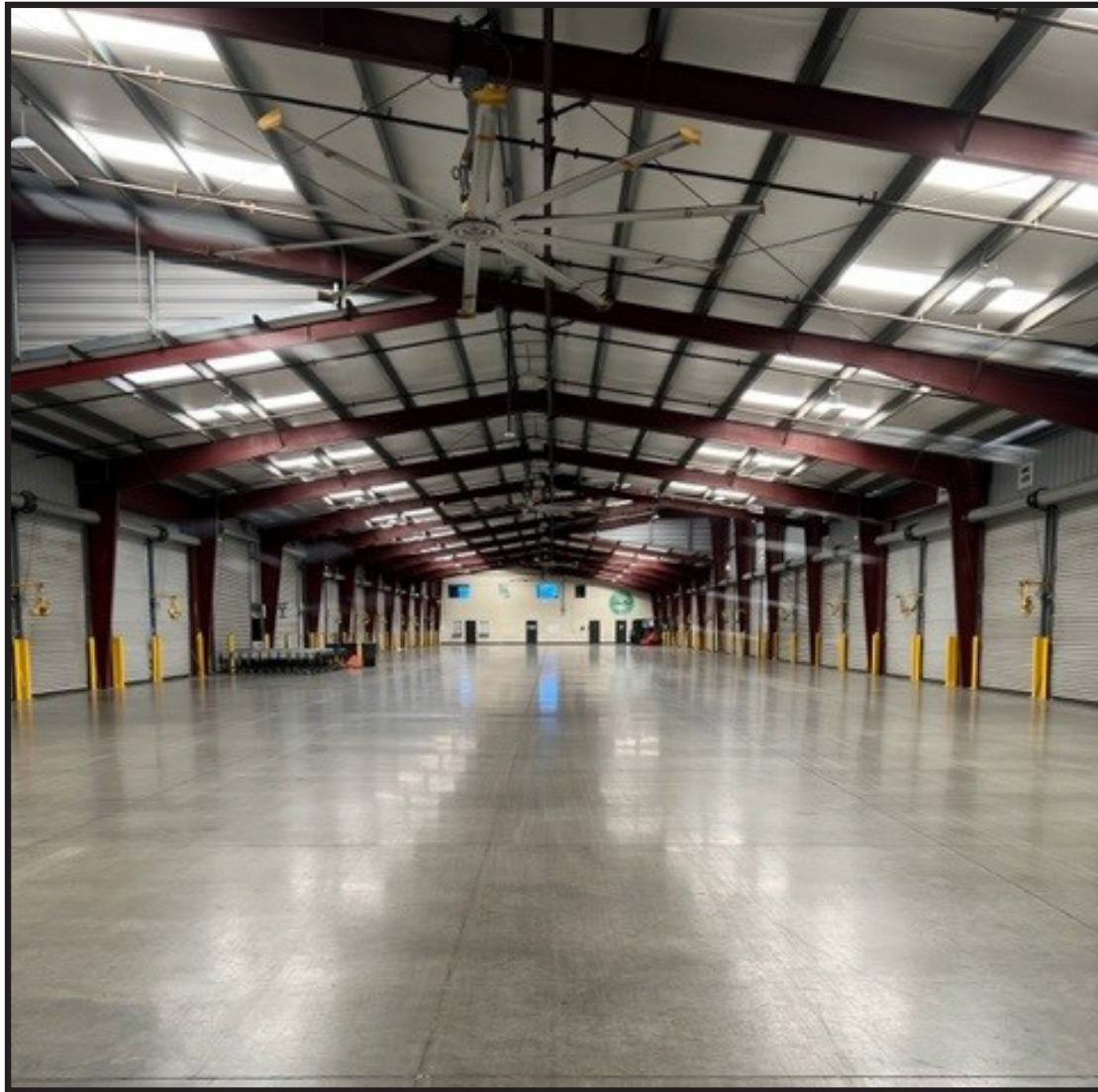
Randy Lockhart
Vice Chairman
909.974.4067
randy.lockhart@nrmk.com
CA License #00974981

FOR LEASE

±27,360 SF
CROSSDOCK FACILITY
ON ±4.0 ACRES

8600 Banana Avenue, Fontana, CA

PHOTOS



Voit

REAL ESTATE SERVICES

Shy Assar
Senior Vice President
909.545.8091
sassar@voitco.com
CA License #01964667

Braden Sprenger
Associate
909.545.8000
bsprenger@voitco.com
CA License #02190434

NEWMARK

Steve Sprenger
Vice Chairman
909.974.4078
steve.sprenger@nrmk.com
CA License #01202806

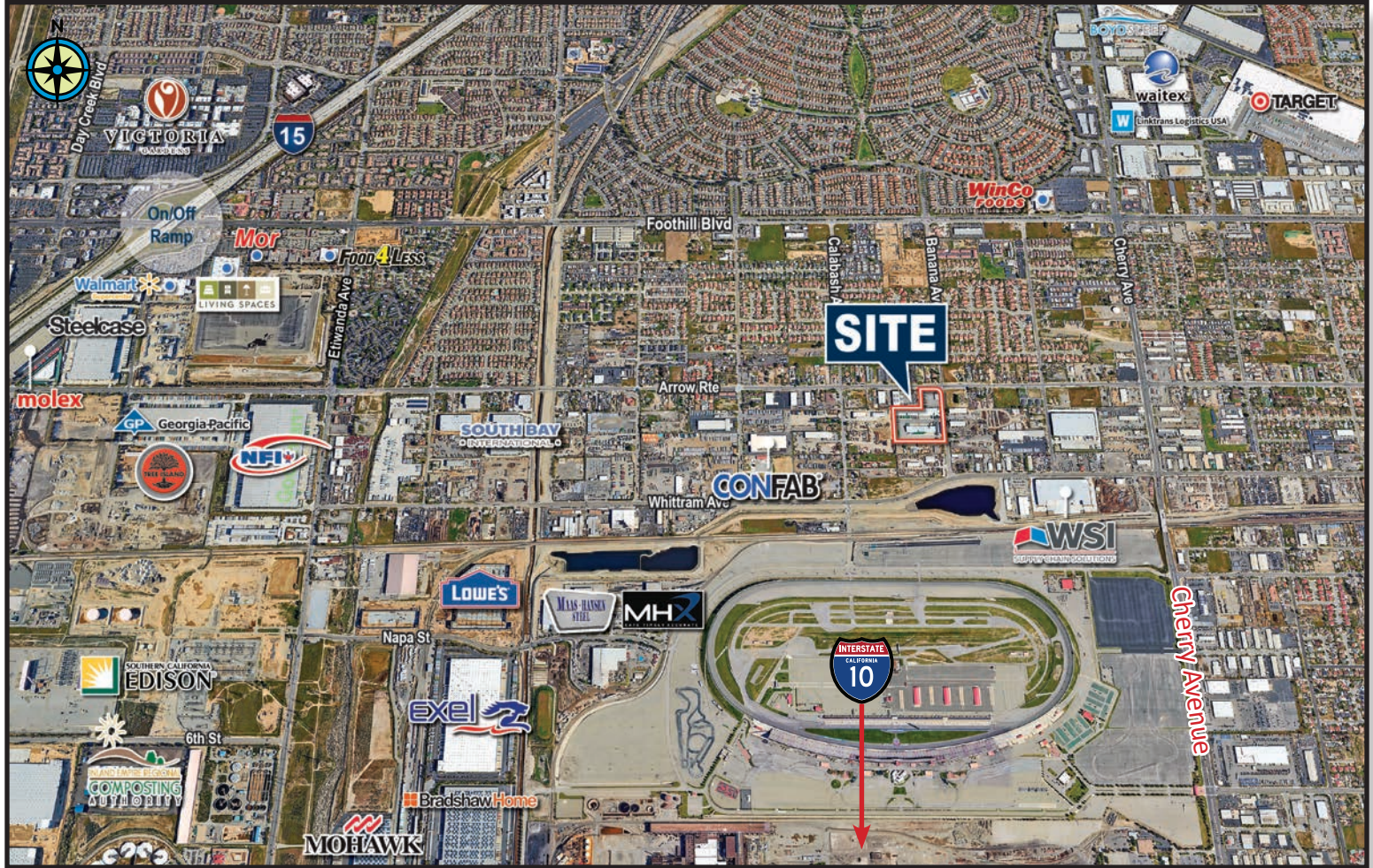
Randy Lockhart
Vice Chairman
909.974.4067
randy.lockhart@nrmk.com
CA License #00974981

FOR LEASE

±27,360 SF
CROSSDOCK FACILITY
ON ±4.0 ACRES

8600 Banana Avenue, Fontana, CA

CORPORATE NEIGHBORS



Voit

REAL ESTATE SERVICES

Shy Assar
Senior Vice President
909.545.8091
sassar@voitco.com
CA License #01964667

Braden Sprenger
Associate
909.545.8000
bsprenger@voitco.com
CA License #02190434

NEWMARK

Steve Sprenger
Vice Chairman
909.974.4078
steve.sprenger@nrmk.com
CA License #01202806

Randy Lockhart
Vice Chairman
909.974.4067
randy.lockhart@nrmk.com
CA License #00974981