



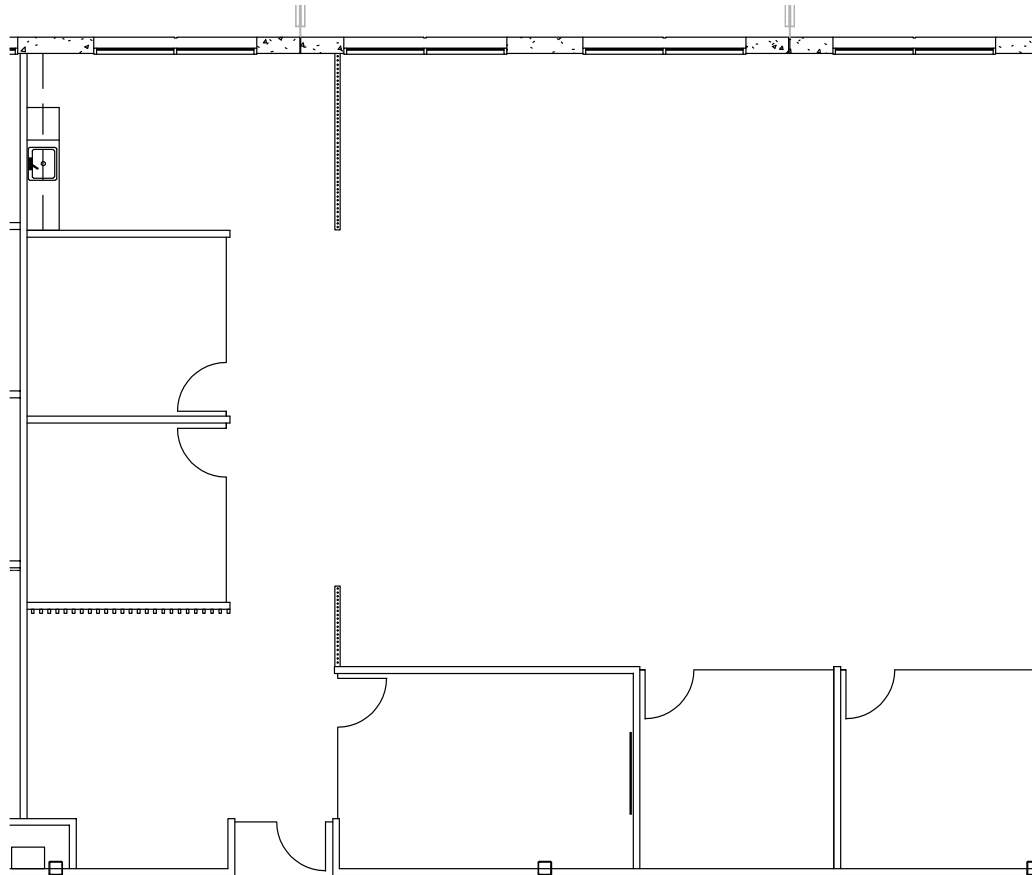
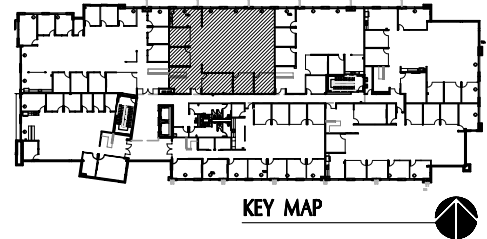
# THE RESERVE

AT SAN TAN

355 & 365 EAST GERMANN ROAD

365 | SUITE 260

±3,587 SF



- 4 OFFICES
- 1 CONFERENCE ROOM
- KITCHEN/BREAK AREA
- EXPOSED CEILING LOBBY & BREAK AREA

**NEWMARK**

The information contained herein has been obtained from sources deemed reliable but has not been verified and no guarantee, warranty or representation, either express or implied, is made with respect to such information. Terms of sale or lease and availability are subject to change or withdrawal without notice.

**MIKE GARLICK, SIOR**  
Executive Managing Director  
t 602-952-3825  
mike.garlick@nmrk.com

**PATRICK DEVINE**  
Senior Managing Director  
t 602-952-3859  
patrick.devine@nmrk.com