

433 E STAMFORD

Abilene, TX 79601

EXECUTIVE
SUMMARY



OFFERING SUMMARY

Sale Price: Subject to Offer
Lot Size: 27.7 Acres
Zoning: GC

PROPERTY OVERVIEW

This large tract has approximately 8-10 acres of usable surface at the northeast corner at Stamford Street. The proximity to the Interstate, Abilene Christian University, and other prominent retail locations around it makes it a highly desirable location.

PROPERTY HIGHLIGHTS

- Interstate Frontage
- Large Area of Usable Land
- Just North of Abilene Christian University
- High Visibility from Interstate

ERIK JOHNSON

325.698.5661

erik@pauljohnsonrealtors.com



4633 South 14th Street | Abilene, TX 79605 | 325.698.5661

Brokerage makes no representation as to accuracy of all data presented.

PAULJOHNSONREALTORS.COM

433 E STAMFORD

Abilene, TX 79601

ADDITIONAL
PHOTOS



ERIK JOHNSON

325.698.5661

erik@pauljohnsonrealtors.com



4633 South 14th Street | Abilene, TX 79605 | 325.698.5661

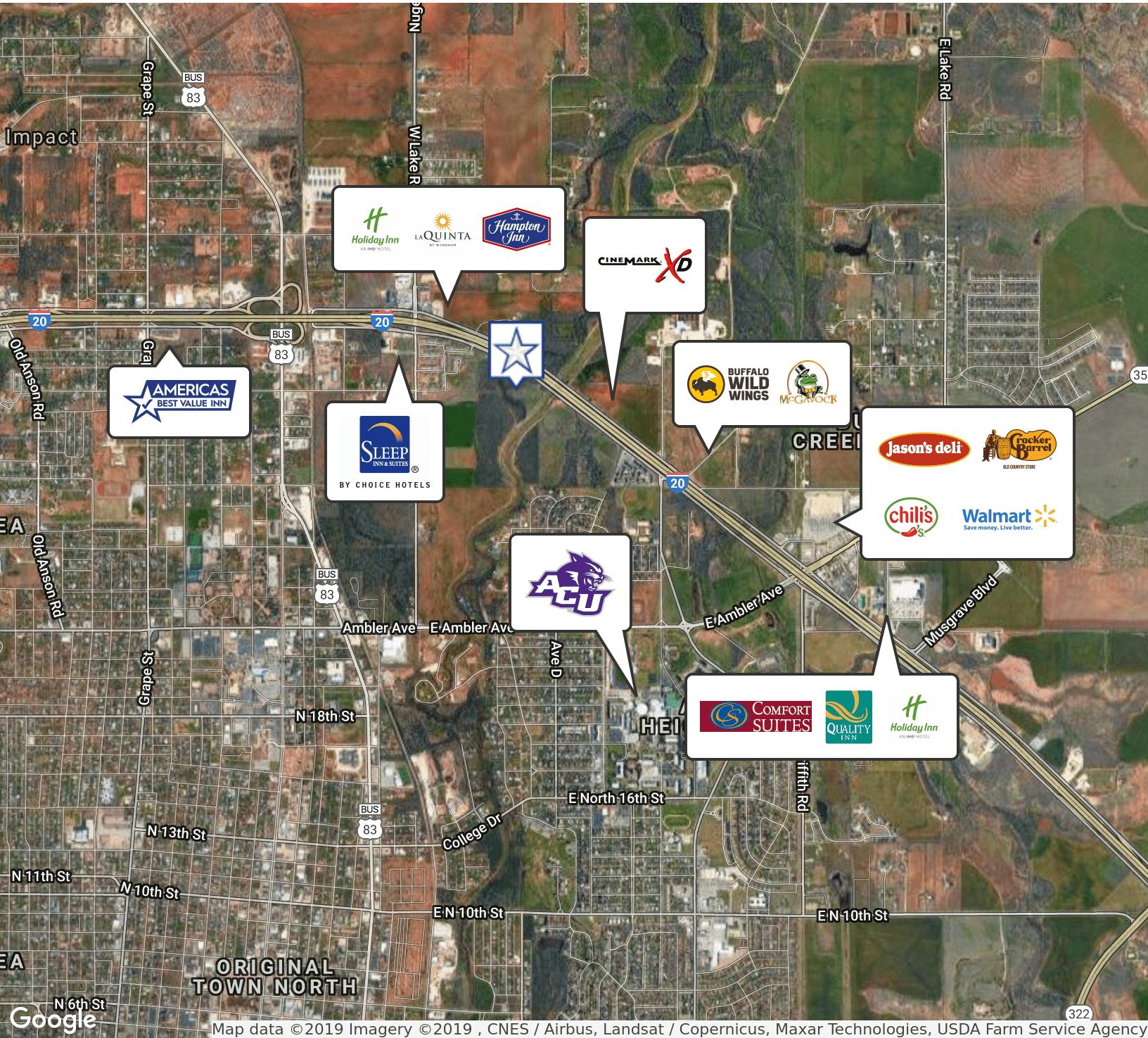
Brokerage makes no representation as to accuracy of all data presented.

PAULJOHNSONREALTORS.COM

433 E STAMFORD

Abilene, TX 79601

LOCATION
MAPS



ERIK JOHNSON

325.698.5661

erik@pauljohnsonrealtors.com



4633 South 14th Street | Abilene, TX 79605 | 325.698.5661

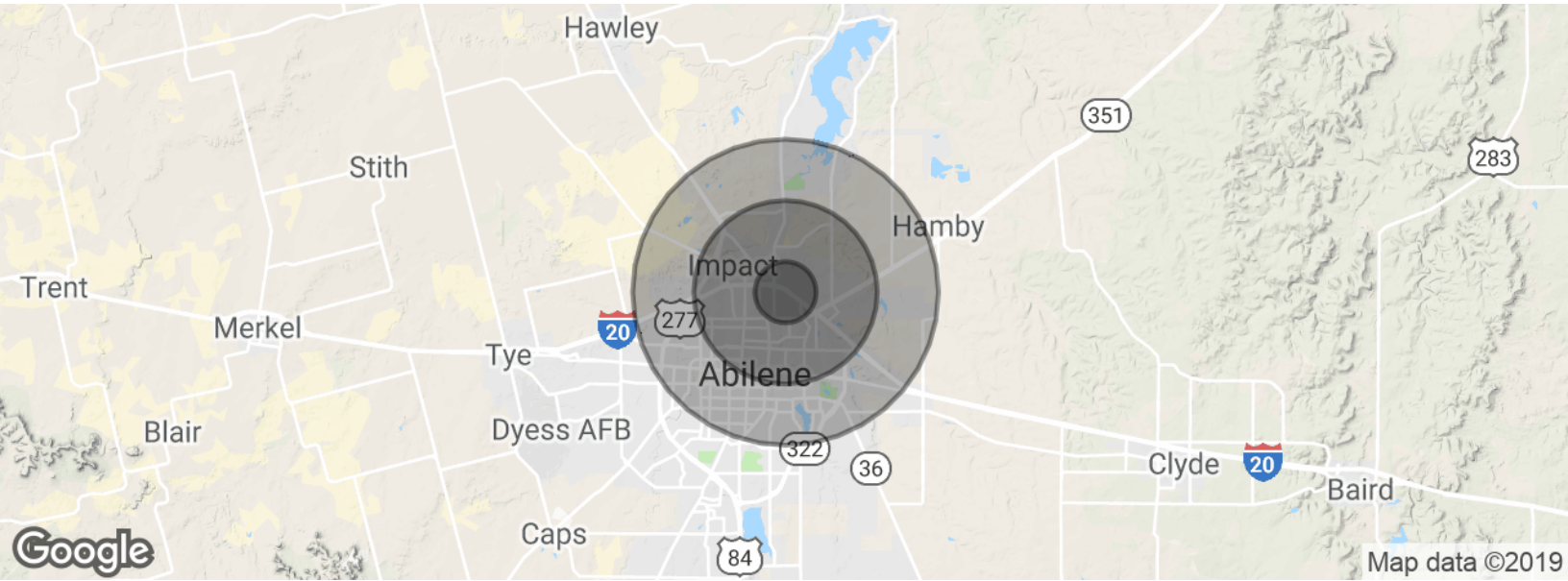
Brokerage makes no representation as to accuracy of all data presented.

PAULJOHNSONREALTORS.COM

433 E STAMFORD

Abilene, TX 79601

DEMOGRAPHICS
MAP & REPORT



POPULATION

	1 MILE	3 MILES	5 MILES
Total population	3,572	27,844	67,914
Median age	21.3	27.8	31.7
Median age (Male)	23.9	26.7	29.8
Median age (Female)	21.1	29.5	34.3

HOUSEHOLDS & INCOME

	1 MILE	3 MILES	5 MILES
Total households	1,035	9,861	25,286
# of persons per HH	3.5	2.8	2.7
Average HH income	\$50,328	\$42,015	\$46,462
Average house value	\$113,034	\$77,454	\$84,155

* Demographic data derived from 2010 US Census

ERIK JOHNSON

325.698.5661

erik@pauljohnsonrealtors.com

