

FOR  
SALE

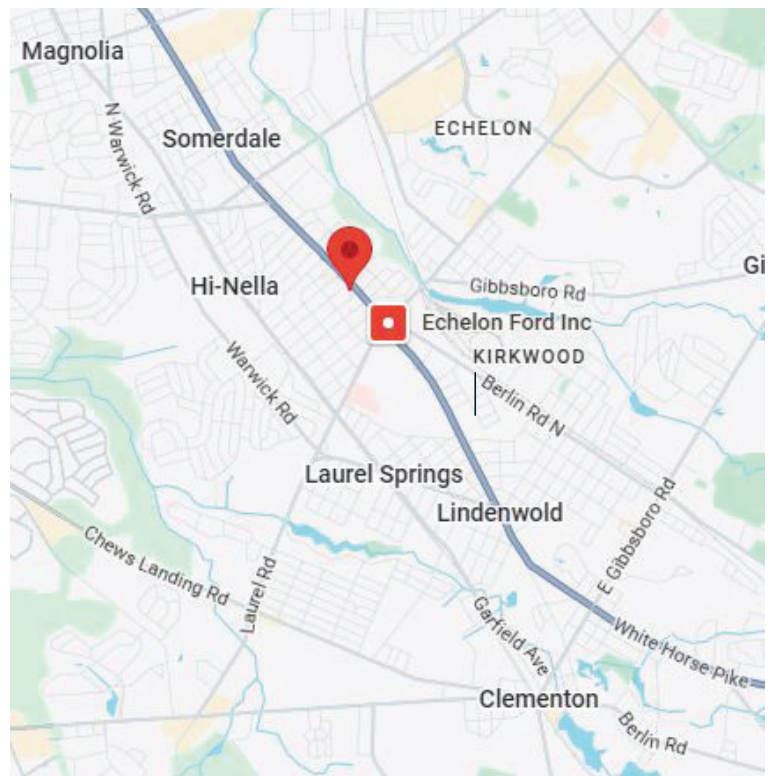
Sterling  
VETERINARY  
HOSPITAL

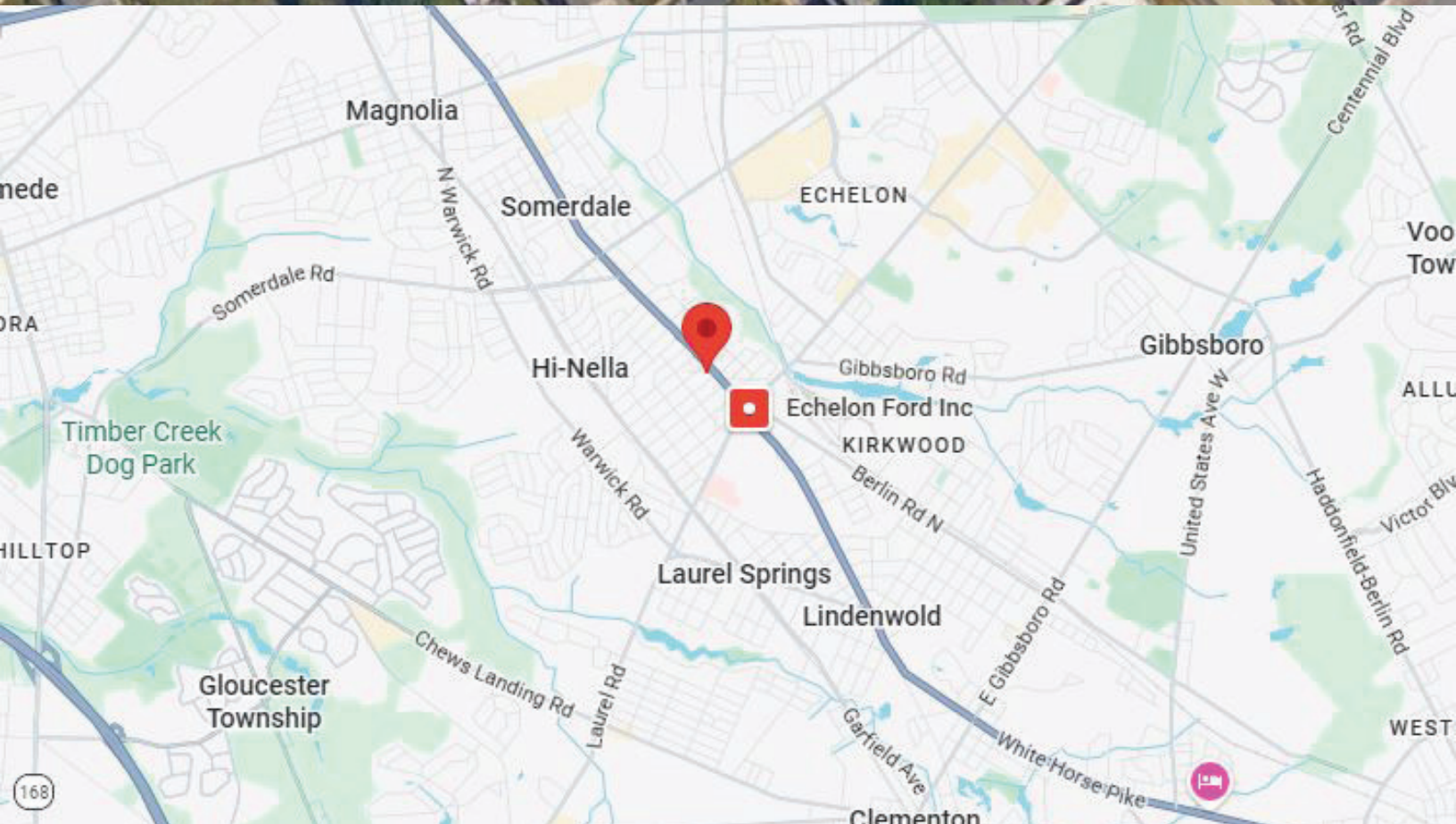
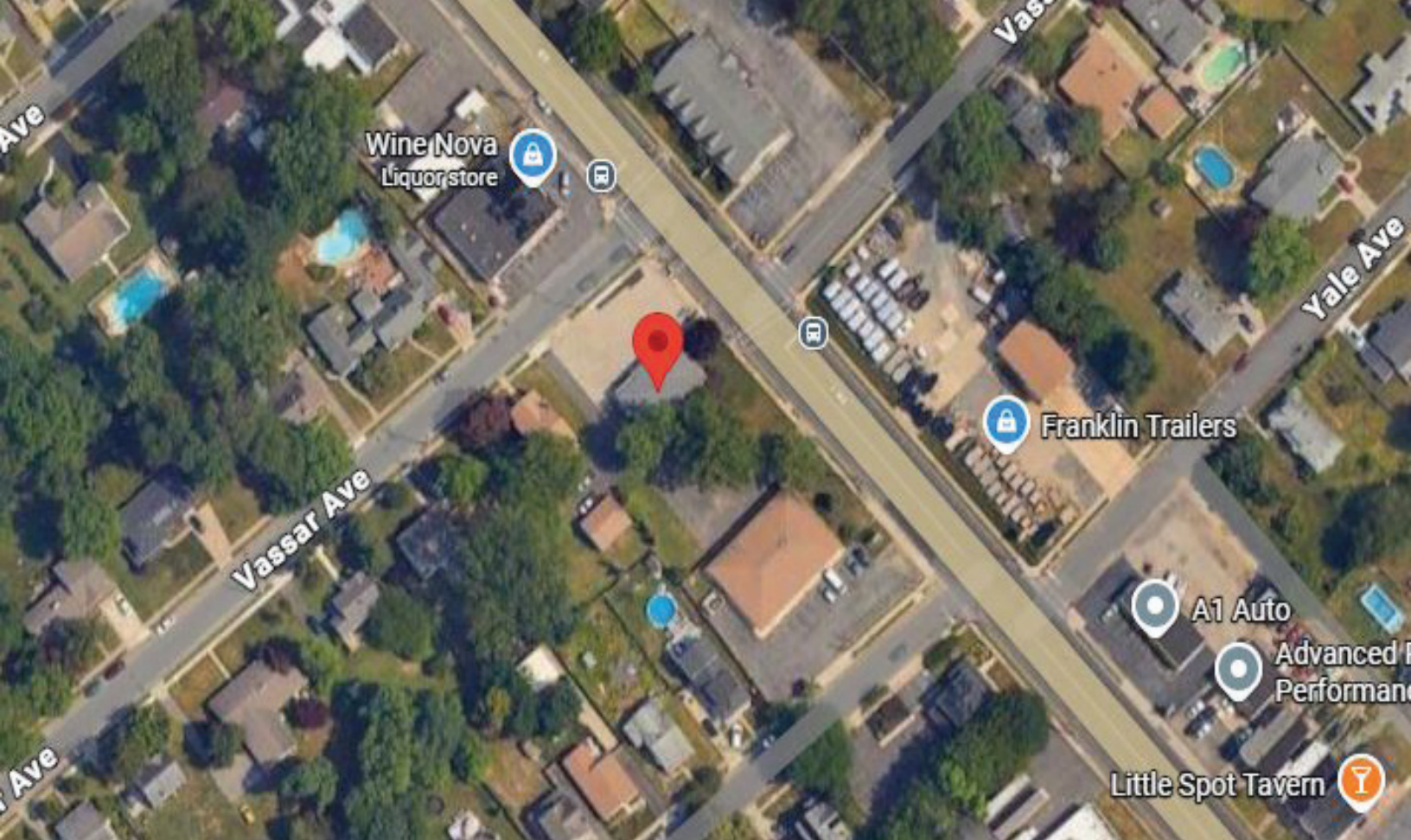
312 N. WHITE HORSE PIKE  
STRATFORD, NJ

FOR SALE  
2,000+/- SF STAND ALONE BUILDING

## PROPERTY HIGHLIGHTS

- Space Available: 2,000+/- SF
- Sale Price: ~~\$325,000~~  
REDUCED TO \$275,000
- Zoning: Commercial
- Tax I.D.: Block 46, Lots 1 & 2
- Taxes: \$17,500+/-
- Stand Alone Building with Adjacent Lot





KEVIN BURNS  
VICE PRESIDENT  
D: (856) 324-5191  
E: KBURNS@MARKEIM.COM

WWW.MARKEIM.COM  
1415 ROUTE 70 EAST, SUITE 500  
CHERRY HILL, NJ 08034  
(856) 354-9700

