

1010 E. MADISON STREET
BIG RAPIDS, MICHIGAN

OFFICE FOR LEASE
1,000 – 3,000 Square Feet Available



**SIGNATURE
ASSOCIATES**
KNOW SIGNATURE | KNOW RESULTS

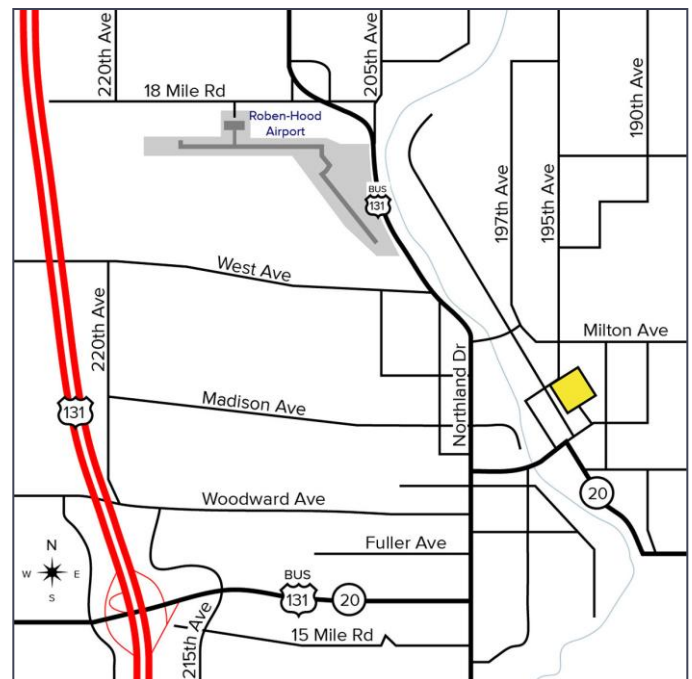
BUSINESS SUITES



PROPERTY FEATURES

- 14,873 total square foot building
- 1,000 – 3,000 square feet available
- Located on 1.84 acres
- Zoned I – Industrial
- Gravel parking lot
- Lease Rate: \$10.00 - \$18.00/sf Modified Gross

Comments: Flexible suites available that are renovated and heated for immediate use. 14 foot ceilings with newer electrical service. Landlord also maintains a shared kitchenette and bathroom area. Trash, wi-fi, water, sewer, and snow removal are included.



For more information, please contact:

JOE RIZQALLAH
(616) 822 6310
jrizqallah@signatureassociates.com

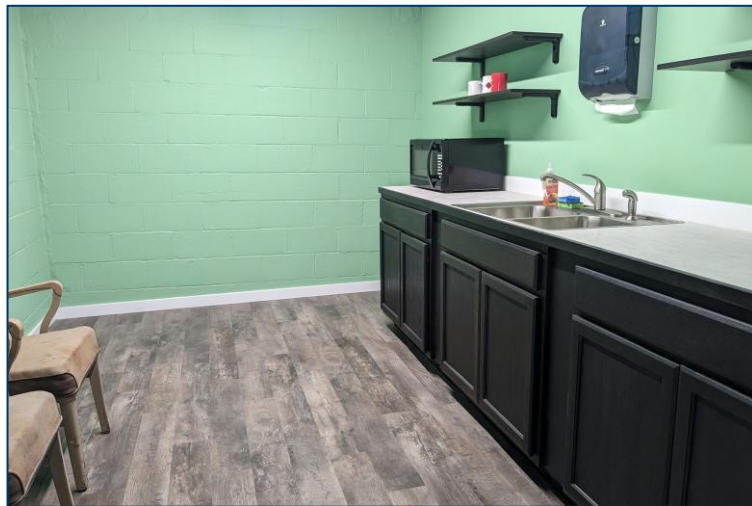
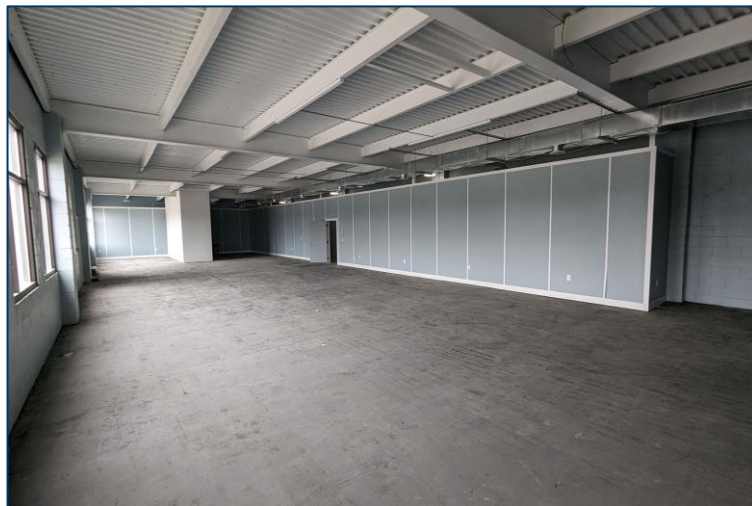
SIGNATURE ASSOCIATES
1188 East Paris Ave SE, Suite 220
Grand Rapids, MI 49546
www.signatureassociates.com

1010 E. Madison Street – Big Rapids, Michigan

Office for Lease

1,000-3,000
Square Feet
AVAILABLE

Additional Photos



For more information, please contact:

JOE RIZQALLAH

(616) 822 6310

jrizzqallah@signatureassociates.com

SIGNATURE ASSOCIATES

1188 East Paris Ave SE, Suite 220

Grand Rapids, MI 49546

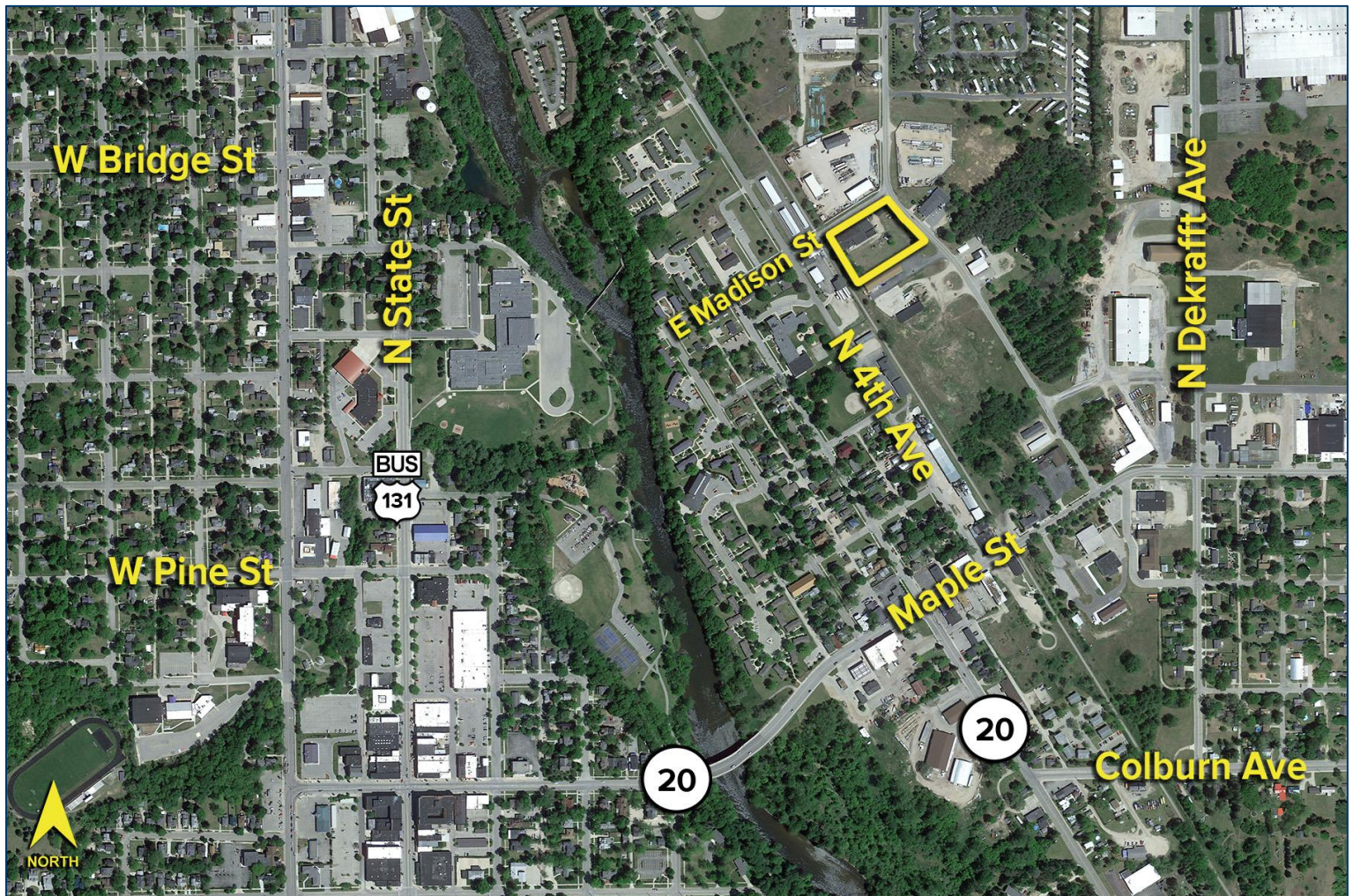
www.signatureassociates.com

1010 E. Madison Street – Big Rapids, Michigan

Office for Lease

1,000-3,000
Square Feet
AVAILABLE

Aerial



AVAILABILITY			
UNIT	TOTAL SF	RATE PSF	MONTHLY
Main	3,000	\$10.00	\$2,500
Split A	2,000	\$10.80	\$1,800
Split B	1,000	\$18.00	\$1,500

For more information, please contact:

JOE RIZQALLAH

(616) 822 6310

jrizqallah@signatureassociates.com

SIGNATURE ASSOCIATES

1188 East Paris Ave SE, Suite 220

Grand Rapids, MI 49546

www.signatureassociates.com