

**SALE**

# Lehua Court

**92-8635 LEHUA**

Oceanview, HI 96737

**PRESENTED BY:**

**GREGORY OGIN**

O: 808.329.6446

gogin@svn.com

HI #RB-16053

**SUSIE SCRIBNER**

O: 805.403.0301

susie.scribner@svn.com

Hawaii #RS-84227

**LISA EDWARDS**

O: 808.329.6446

lisa.edwards@svn.com

HI #RB 23587



## PROPERTY SUMMARY



## OFFERING SUMMARY

<b>SALE PRICE:</b>	\$995,000
<b>NUMBER OF UNITS:</b>	0
<b>LOT SIZE:</b>	4.14 Acres

## PROPERTY DESCRIPTION

4.14 acres of prime real estate positioned for commercial opportunity in Ocean View, Hawaii. Strategically located on Hawaii Belt Road on the corner of Lehua Court, this property benefits from excellent highway visibility, with steady highway traffic and a convenient and central location to a hub of Ocean View retail centers, restaurants and professional businesses. Zoned CV-40, it provides flexibility for retail, office, or mixed-use endeavors. Bring your plans or carry on the conceptual vision of the current owners to build a community retail and gathering center for essential services, shopping + dining + stay and entertainment.

## PROPERTY HIGHLIGHTS

- -Highway frontage with excellent visibility and access
- -Commercially zoned, CV-40
- -Paid Power; utilities at street
- -Future development potential in an area that continues to grow
- -Major thoroughfare for residents and visitors alike

### GREGORY OGIN

O: 808.329.6446  
gogin@svn.com  
HI #RB-16053

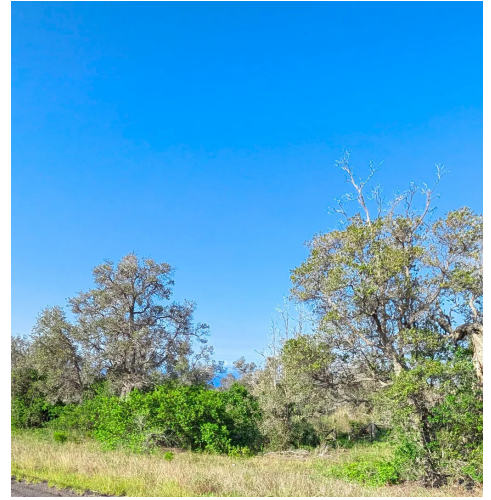
### SUSIE SCRIBNER

O: 805.403.0301  
susie.scribner@svn.com  
Hawaii #RS-84227

### LISA EDWARDS

O: 808.329.6446  
lisa.edwards@svn.com  
HI #RB 23587

## ADDITIONAL PHOTOS

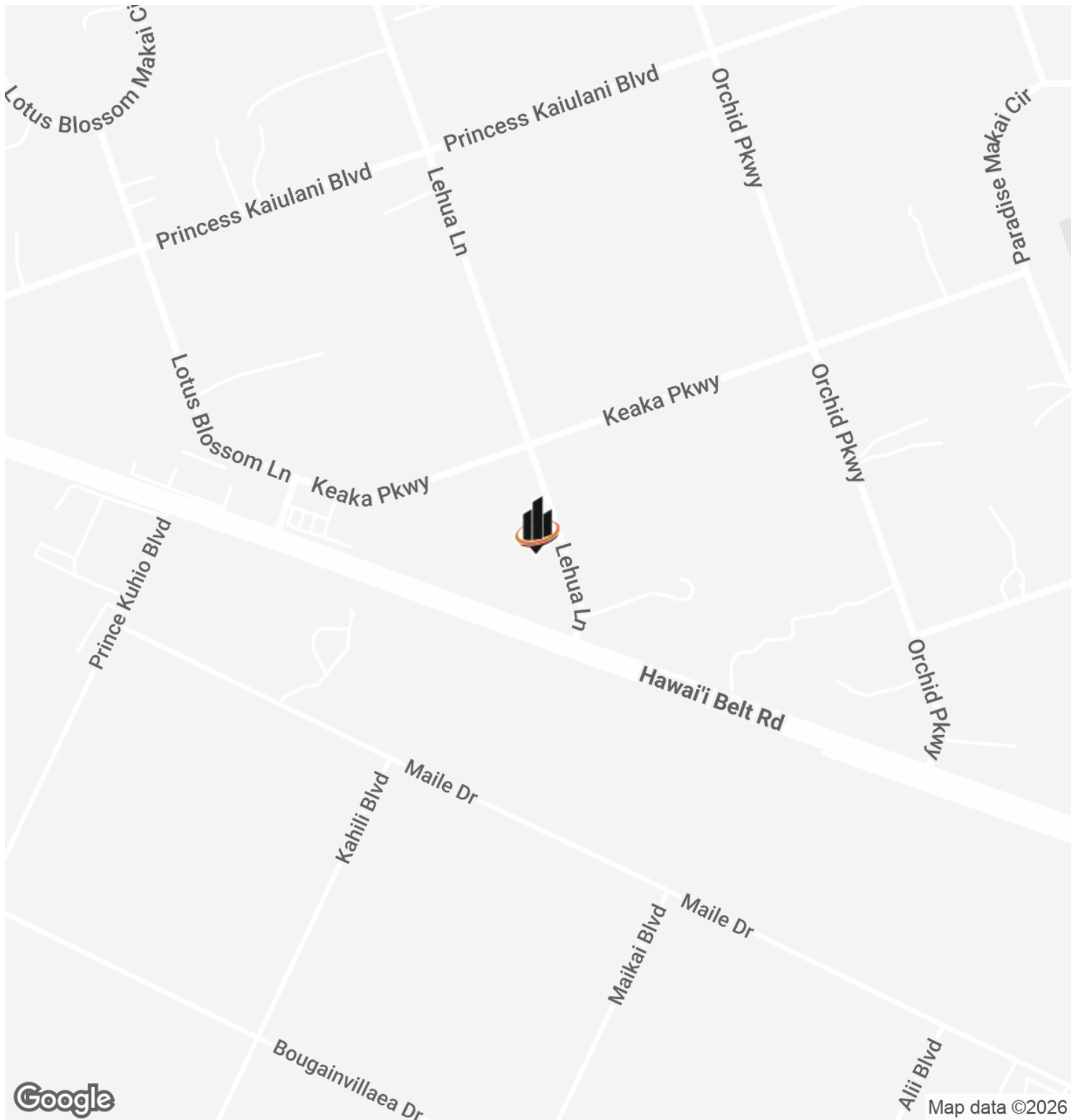


**GREGORY OGIN**  
O: 808.329.6446  
gogin@svn.com  
HI #RB-16053

**SUSIE SCRIBNER**  
O: 805.403.0301  
susie.scribner@svn.com  
Hawaii #RS-84227

**LISA EDWARDS**  
O: 808.329.6446  
lisa.edwards@svn.com  
HI #RB 23587

# LOCATION MAP



**GREGORY OGIN**

O: 808.329.6446  
gogin@svn.com  
HI #RB-16053

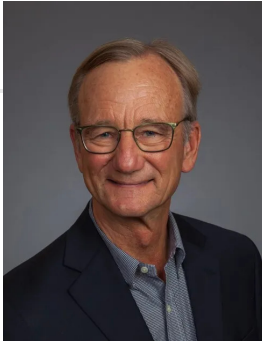
**SUSIE SCRIBNER**

O: 805.403.0301  
susie.scribner@svn.com  
Hawaii #RS-84227

**LISA EDWARDS**

O: 808.329.6446  
lisa.edwards@svn.com  
HI #RB 23587

## ADVISOR BIO 1



### GREGORY OGIN

Principal & Managing Director

[gogin@svn.com](mailto:gogin@svn.com)

Direct: **808.329.6446** | Cell: **808.987.6446**

HI #RB-16053

### PROFESSIONAL BACKGROUND

Gregory G. Ogin, CCIM, CPM, serves as Principal and Managing Director of SVN | GO Commercial, a division of GO Commercial, LLC. Since 1996, he has brought the commercial division of the former Clark Realty Corporation from three buildings in Kailua-Kona to over 700,000 square feet on the island of Hawaii.

Greg has managed properties since 1981, when he supervised and managed five resort stores and a 10,000 square foot resort department store for Liberty House of Hawaii Island. He was then appointed by the Mayor as Deputy Managing Director of the County of Hawaii, where he was in charge of County Operations in West Hawaii. Greg later owned a small, independent, commercial real estate firm which started as a division of Gerry Rott and Associates.

Greg's numerous activities include serving on the Board of Hawaii Island United Way, Lai Opua 2020, Kona Family YMCA and Hawaii Disciplinary Board (Hawaii BAR). He serves as President of Amfac Community Council, Rotary Club - Kailua-Kona, Kona Kohala Chamber of Commerce, past-President of Kauai Road Runners, and founding President of Children's Advocacy Center. Greg also chairs the Hokulia Parks and Cultural Services Association, Kona Community Development Plan, and Kailua Village Improvement Plan.

### EDUCATION

North Hennepin State University  
University of Hawaii

### MEMBERSHIPS

CCIM, CPM

#### SVN | GO Commercial

75-5722 Kuakini Highway Suite 214  
Kailua Kona, HI 96740  
808.329.6446

#### GREGORY OGIN

O: 808.329.6446  
[gogin@svn.com](mailto:gogin@svn.com)  
HI #RB-16053

#### SUSIE SCRIBNER

O: 805.403.0301  
[susie.scribner@svn.com](mailto:susie.scribner@svn.com)  
Hawaii #RS-84227

#### LISA EDWARDS

O: 808.329.6446  
[lisa.edwards@svn.com](mailto:lisa.edwards@svn.com)  
HI #RB 23587