

FOR LEASE

wyrickrobbins

THE SUMMIT

4101

WYRICK ROBBINS  
YATES & PONTON

# THE SUMMIT

4101 Lake Boone Trail | Raleigh, NC 27607



CAPITAL  
ASSOCIATES.

# THE SUMMIT

4101 Lake Boone Trail | Raleigh, NC 27607

<b>PROPERTY TYPE</b>	Office
<b>BUILDING SIZE</b>	120,254 SF
<b>YEAR BUILT</b>	1989
<b>COUNTY</b>	Wake
<b>LOCATION</b>	Raleigh, NC
<b>FLOORS</b>	5



**TRIPP BRADSHAW**

919.749.0004 (c)

919.233.9901 (o)

tbradshaw@capitalassociates.com

# THE SUMMIT

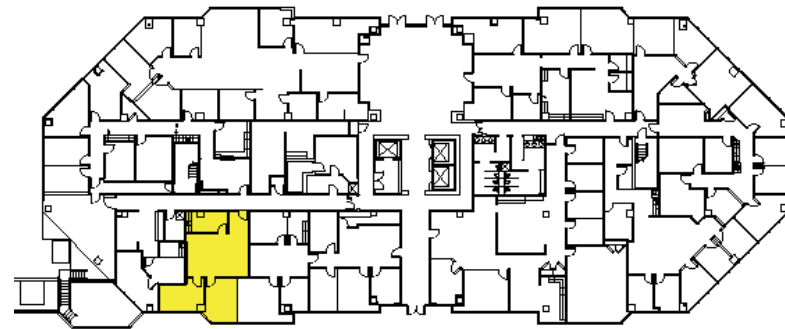
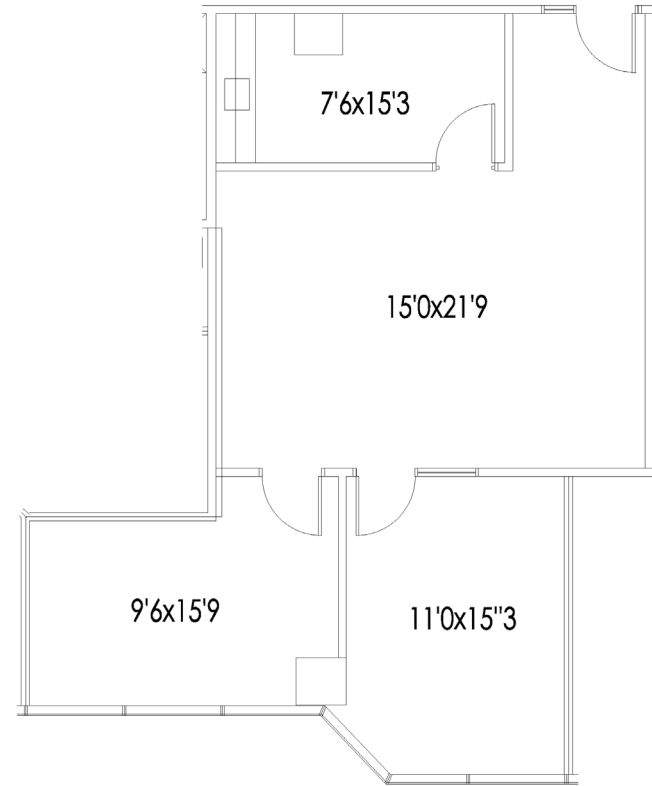
4101 Lake Boone Trail | Raleigh, NC 27607

## AVAILABLE

For short term sublease or direct lease

First Floor  
Suite 109

1,004 SF



**TRIPP BRADSHAW**

919.749.0004 (c)

919.233.9901 (o)

tbradshaw@capitalassociates.com

# THE SUMMIT

4101 Lake Boone Trail | Raleigh, NC 27607


## ABOUT

The Summit is a 120,000 SF five-story, Class A granite office building featuring a two-story granite and marble lobby, polished bronze accents, structured parking, and a mature landscape.

## LOCATION

Convenient West Raleigh location near retail, dining, hotel, and banking opportunities is only minutes from Interstates 40, 440 and US Highway 70 and is easily accessible to downtown, North Raleigh, Cary, RDU International Airport, and Research Triangle Park.

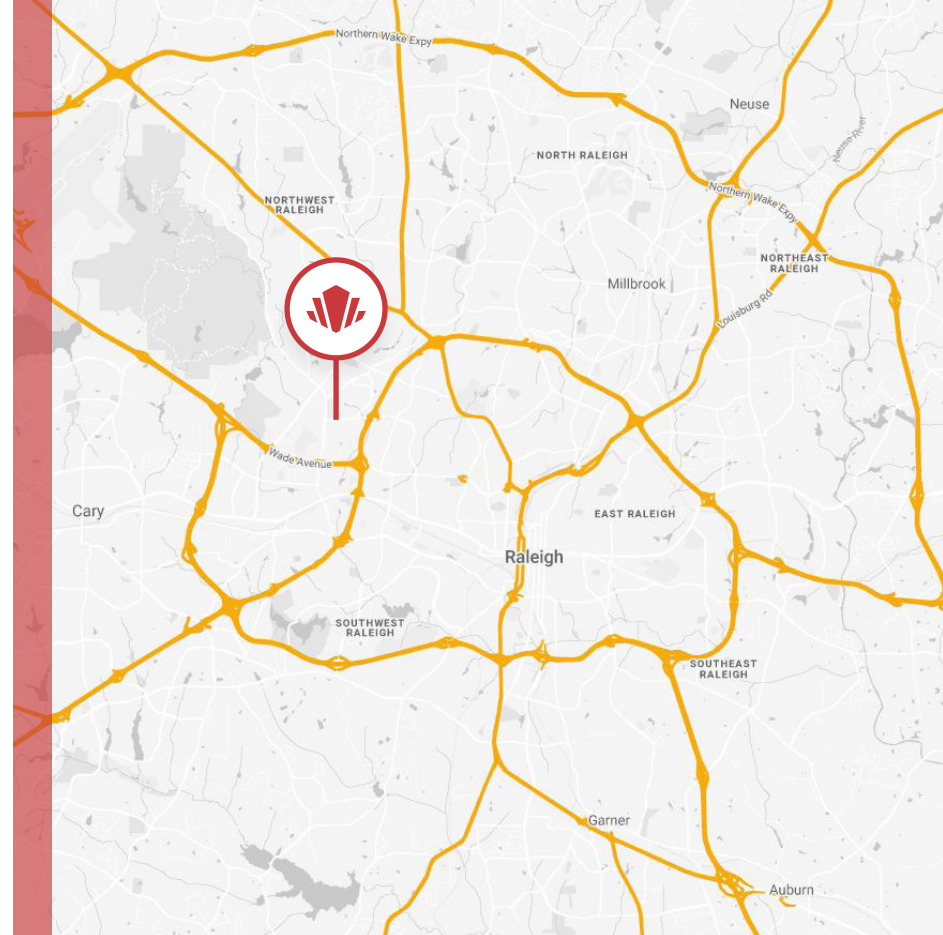
### Walk Score®

-  **62** **SOMEWHAT WALKABLE**  
Some errands can be accomplished on foot.
-  **36** **SOME TRANSIT**  
A few nearby public transportation options.
-  **58** **VERY BIKEABLE**  
Biking is convenient for some trips.



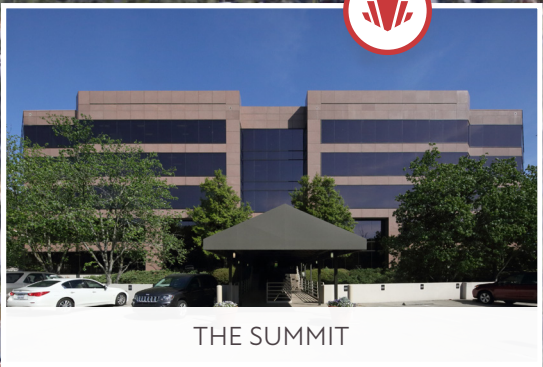
#### TRIPP BRADSHAW

919.749.0004 (c)  
919.233.9901 (o)  
tbradshaw@capitalassociates.com





 **North Carolina Museum of Art**



THE SUMMIT

## POINTS OF INTEREST

### DINING

- Chick-fil-A
- McDonalds
- Starbucks
- Buffalo Brothers Pizza & Wings
- The Oak

- Guasaca Arepa & Salsa Grill
- City Barbeque
- Village Deli & Grill
- Chubby's Tacos
- Randy's Pizza

### CONVENIENCE

- Food Lion
- UNC Health Rex
- Walgreens

### LEISURE

- North Carolina Museum of Art



**A LOBBY THAT CATCHES THE EYE**

Elegantly filled with granite and a stunning grand piano.

